



SINCE 1948  
**Chamberlain**  
REALTORS®

HOMEQUITY  
RELOCATION CENTER

**BLOOMFIELD**

LAKE FRONT Split level with panoramic views from 800 sq. ft. of decking, 3 bedrooms, family room, 2 fireplaces, boat house, central air, very private.  
\$119,750 (H-1700E) 647-6400

**BLOOMFIELD**

LOVELY updated Ranch with 3 bedrooms, 1½ baths, fireplace, beautiful oak kitchen, dock, fountain, 2 car attached garage, Bloomfield Hills schools.  
\$115,900 (S-222E) 647-6400

**BIRMINGHAM**

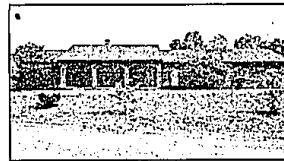
EXQUISITE Tudor exterior with charming interior, 3-4 bedrooms, 2½ baths, family room with fireplace and screened porch overlooking private yard.  
\$299,000 (S-452E) 647-6400

**BIRMINGHAM**

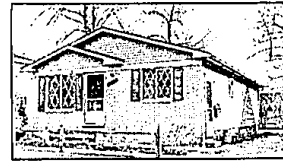
CHARMING updated Ranch located on lovely treed lot. Many newer features include kitchen, furnace, central air, roofing and much more! Security system.  
\$118,800 (P-195E) 647-6400

**BLOOMFIELD**

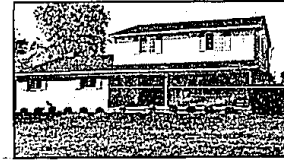
ADAMS WOODS CONDO located on the Ravines with finished walk-out lower level. Bright with spectacular view, Marble foyer, oak cabinets and 2 decks.  
\$214,000 (I-112E) 647-6400

**BLOOMFIELD**

KIRK IN THE HILLS area, Bloomfield Hills schools. Ranch is nestled on a private lot with pond frontage. Open floor plan and cathedral ceiling.  
\$189,900 (G-155E) 647-6400

**BIRMINGHAM**

GREAT VALUE! Freshly painted and newly carpeted, this 3 bedroom home is close to shopping and transportation. Large kitchen and full basement.  
\$89,900 (L-122E) 647-6400

**BLOOMFIELD**

COLONIAL WITH LAKE PRIVILEGES on Upper Long Lake. Features 4 bedrooms, 2½ baths, quiet setting and gorgeous acre lot. This home is a must see!  
\$178,000 (M-185E) 647-6400

**BEVERLY HILLS**

NOTTINGHAM FOREST COLONIAL offers, hardwood floors, family room with wet bar and fireplace, fireplace in master bedroom, exterior painted in '92.  
\$259,900 (N-222E) 647-6400

**TROY**

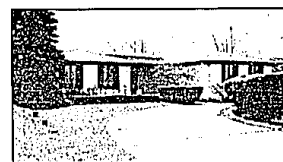
BEAUTIFUL TREED private site is the setting for this 4 bedroom, 2½ bath, Tudor Colonial. Den, spacious gracious bedrooms, beechwood swim club.  
\$229,900 (H-1235-E) 641-1680

**TROY**

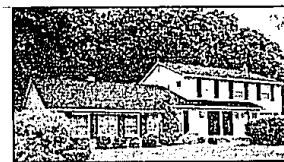
FABULOUS park like setting near end of dead end street, 3 bedrooms, 2½ baths, updated kitchen cabinets, new windows, new roof and freshly painted.  
\$144,500 (H-045-E) 641-1680

**FARMINGTON HILLS**

SECLUDED WOODED SETTING for this 4 bedroom, 4½ bath Colonial. 2 master suites and teenager or in-law suite on lower level. Many fabulous features.  
\$439,700 (D-284E) 647-6400

**WEST BLOOMFIELD**

SPACIOUS custom "Builder's" home. This home is an entertainment dream! Enjoy the serene setting in Cumberland Commons. Just move in!!  
\$247,900 (W-303E) 647-6400

**TROY**

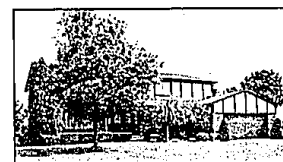
SPACIOUS 4 bedroom Colonial in prestigious Hickory Heights Sub. New roof in '90, new furnace and A/C in '91. Large treed lot on cul-de-sac. Must see.  
\$252,900 (H-0558-E) 641-1680

**WEST BLOOMFIELD**

DYNAMITE CONTEMPORARY, vaulted ceilings, gourmet kitchen, docks, hot tub and so much more!  
\$379,700 (V-262E) 851-4400

**ROCHESTER HILLS**

GRACIOUS TRADITIONAL with contemporary flair. Classic tudor with first floor master suite, great room, stone fireplace, backs to woods.  
\$262,900 (GP181-E) 641-1680

**TROY**

BEAUTIFULLY MAINTAINED COLONIAL - 4-5 bedrooms, ceramic foyer, circular staircase, 3200 sq. ft. of living. Sprinkler system, central air and more.  
\$218,000 (K-188-E) 641-1680

**ROYAL OAK**

LOVELY spacious 3 bedroom Ranch in Shrine area. Huge MBR with full bath, twin walk-in closets and doorwall to patio and yard. Euro style kitchen.  
\$181,490 (L-220-E) 641-1680

**ROYAL OAK**

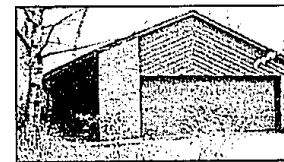
WONDERFUL family home with 3 bedrooms, 1½ baths, Florida room and dock with hot tub. Located in popular Beverly Hills section of Royal Oak.  
\$138,900 (B-430E) 647-6400

**WEST BLOOMFIELD**

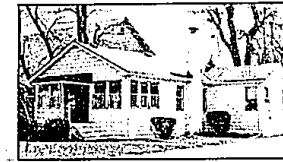
COUNTRY IN THE CITY! Sprawling 4 bedroom Ranch on one acre lot. Large open kitchen, great room with vaulted ceiling, multi-level dock.  
\$225,000 (M-734E) 851-4400

**WEST BLOOMFIELD**

LOVELY large 4 bedroom Colonial on a hill on over a ½ acre lot. Multi-level patio and professional landscaping surround inground pool.  
\$285,500 (M-450E) 851-4400

**BLOOMFIELD HILLS**

WAREEK WOODS Condominium, multi-level lake-front. Nice wooded setting, 3 bedrooms, 2½ baths, quality marble, great room with wet bar, walk-out.  
\$319,000 (P-366E) 851-4400

**WEST BLOOMFIELD**

AFFORDABLE 3 bedroom home with lake privileges on Walnut Lake. Move-in condition, double lot and lots of growth potential. Call today!  
\$109,700 (L-220E) 647-6400

**FARMINGTON**

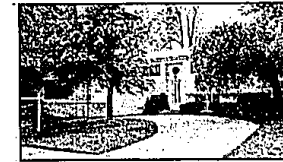
CHARMING Tri-Level with walking distance to Flanders Elementary. Neutral decor, large eat-in kitchen, doorwall to patio and private backyard.  
\$109,900 (F-331E) 851-4400

**COMMERCE**

WONDERFUL SETTING with spectacular views. Custom built, 4 bedrooms, professional decor, 2½ baths, expansive decking, 2 garages.  
\$279,900 (B-335E) 851-4400

**WEST BLOOMFIELD**

GREEN LAKE LAKEFRONT Broadwalk, sundeck, patio and spectacular gardens surround this 2-story home. Lakeviews, fieldstone fireplace, Jacuzzi.  
\$299,000 (C-632E) 851-4400

**FARMINGTON**

3 BEDROOM, 1½ bath home on private street. Huge finished lower level w/wet bar, neutral decor, newer carpet, large lot.  
\$119,900 (R-210E) 547-2000

**SOUTHFIELD**

LARGE Tri-Level on estate like property, 4 bedrooms, gourmet kitchen, finished walk-out, Florida room, built-in BBQ, circular driveway. Immediate possession.  
\$189,000 (P-270E) 851-4400

**COUNSEL WITH CHAMBERLAIN!**

ROYAL OAK  
547-2000

UTICA  
739-1300

WARREN  
755-5070

TROY ROCHESTER  
641-1660

BIRMINGHAM  
647-6400

WEST BLOOMFIELD  
851-4400

BLOOMFIELD  
540-6777