

The Prudential Great Lakes Realty



BLOOMFIELD. A private gated community with rolling hills, woods and water create the ideal setting for this sophisticated Contemporary. The fluid floor plan offers 10 foot ceilings, 8 foot doors, skylights, extensive use of marble and many doorways to access the multi-level deckings with lake views. Spectacular! \$1,450,000 626-9100 02-B-7015



OPEN SAT. & SUN. 1-4, 1045 Vaughn, S. of Long Lake, W. of Woodward. CITY OF BLOOMFIELD HILLS. Built in the 1890's, this 4 bedroom gated home offers old world design enhanced by premium updates. There is a new cabana and also a 2 bedroom guest house designed by Eric Saarinen. New kitchen and baths. \$1,099,000 648-6000



ORCHARD LAKESFRONT. Outstanding contemporary decor accents this 3 bedroom, 3 bath home. Fabulous views of the lake and woods. Features vaulted ceilings, recessed lighting throughout, natural oak floors and a white custom kitchen with top-of-the-line appliances. Multiple decks. West Bloomfield schools. \$735,000 683-8900 06-B-8270



OPEN SUN. 12-4, 1075 W. Gun, N. of Orion Rd., E. of Collins. OAKLAND TWP. New construction. Media room, 2-way fireplaces in 2 1/2 story great room, library and first floor master bedroom. Four and a half baths. A spectacular 3-story glass hemisphere provides views of the 3.34 tract acres with creek. \$599,900 651-8550 04-A-9158



BLOOMFIELD. Smashing! Very upscale and transitional floor plan. Redone in neutrals. Two-story foyer. Tray ceiling in great room. Quality throughout. New white Woodmode kitchen with corian countertops. Hardwood floors, wood windows, doorways open to extensive decking. Open, light and airy! Birmingham schools. \$545,000 648-6000



OPEN SUN. 1-4, 5848 Silverpond, N. of Maple, W. of Farmington. WEST BLOOMFIELD. Spectacular 4 bedroom Contemporary. Hardwood floors, library, family room fireplace. Master bath with whirlpool. Three car side-entrance garage. \$355,000 626-9100



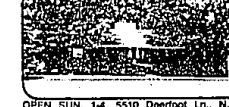
OPEN SUN. 1-4, 5471 Bialost Park Dr., N. of Walden, E. of Sashabaw. CLARKSTON. Beautiful 3 bedroom Townhouse on the 18th green of Pine Knob Golf Course. Gourmet kitchen, walk-out lower level, lovely windows and doors, 3 fireplaces. \$209,000 648-6000



OPEN SUN. 1-4, 5362 Pond Bluff, N. of Walnut Lk., W. of Farmington. WEST BLOOMFIELD. Elegant but casual living! Five bedroom, 3 1/2 bath California Contemporary. Exquisite glass work, neutral decor and West Bloomfield schools. \$325,000 646-6000 01-B-8446



ROCHESTER HILLS. A creek runs through the grounds of this executive home. The master bedroom features a built-in canopy bed, fireplace and sitting room. Four additional bedrooms, 2nd floor laundry. All the amenities you dream of. \$299,900 651-8850 04-A-8309



OPEN SUN. 1-4, 5510 Deerfoot Ln., N. of Walnut, E. of Halstead. WEST BLOOMFIELD. This like-new home features 4 bedrooms, 4 full baths, large master suite, finished walk-out lower level, family room and library. Very spacious rooms. \$274,900 626-9100 02-A-6387



TROY. Meticulously maintained 4 bedroom executive Williamsburg Colonial. Huge kitchen with southern exposure, island and double bay window casework. Frontal cul-de-sac location. New Troy High. \$229,900 689-8900



OPEN SUN. 1-4, 3822 Argonne, S. of 11 Mile, W. of Farmington. FARMINGTON HILLS. Delightful 4 bedroom, 3 bath home. Updated throughout. Ultra modern kitchen. New roof and 2 new furnaces. Gorgeous inground pool and hot tub! \$249,900 626-9100 02-B-8404



OPEN SUN. 1-4, 4978 Bloomfield Ln., N. of 14 Mile, E. of Middlebelt. WEST BLOOMFIELD. Stunning updated 4 bedroom, 3 bath Contemporary on a dead-end street. Large kitchen with new built-ins. Newer roof and furnace. Birmingham schools. \$229,000 683-8900



OPEN SAT. & SUN. 1-4, 1683 Poplar, S. of S. Blvd., E. of Coolidge. TROY. Designed for efficiency! Four bedrooms, 2 1/2 baths, 1st floor laundry, library, fireplace, wet bar! Island kitchen with built-ins. Exclusive Forest Creek Sub. \$209,900 689-8900



OPEN SAT. 1-4, 6705 Cooley Beach Dr., W. of Union Lake, N. of Cooley Lake. WHITE LAKE. Cooley Lake front! Lakefront Contemporary with cathedral ceilings, distonite fireplace, lot! 4th bedroom, finished walk-out and 1st floor master. \$199,900 646-6000 01-B-7259



OPEN SUN. 1-4, 5938 James Head Ct., N. of Greer, W. of Hiller in Pilgrim Hills. WEST BLOOMFIELD. Exhilarating 4 bedroom home. Beautiful library, family room fireplace, large island kitchen and luxurious master bath. Cul-de-sac location. \$209,000 683-8900 06-B-7873



ROCHESTER HILLS. Sharp, sharp 4 bedroom home on the lake! Gorgeous, neutral, updated decor. Freshly painted inside and out. Circle drive and side-entry garage. Beautiful views of Lochmoor Lake from rear of home. Huge lot. \$207,000 651-8850 04-A-8436



OPEN SUN. 1-4, 30218 Embassy, S. of 13 Mile, W. of Evergreen. BIRMINGHAM. Updated 4 bedroom Contemporary. Open foyer, appuccia kitchen, large living room and formal dining room. Master suite with fireplace. In-ground pool. \$199,900 626-9100 02-B-7760



OPEN SUN. 2-5, 8991 Twin Lakes, off M-59, W. of Williams Lk. Rd. Emler S. on Sunny Beach Dr. WHITE LAKE. New Contemporary. Three bedrooms, 3 baths, Tull Lake privileges. Other sites available - waterfront, wooded walk-out sites. \$189,900 683-8900



FARMINGTON HILLS. A private cul-de-sac and meandering brick walk lead to this exquisite 4 bedroom home. Decorator perfect. Ceramic floors. French doors lead to a charming brick patio. Fireplace, central air, 1st floor laundry. \$189,500 626-9100 02-B-6434



OPEN SUN. 1-4, 4448 Squirrel Rd., N. of Waltham, E. of Squirrel. BLOOMFIELD. Beautiful 3 bedroom ranch. Newer kitchen and furnace. Two-way fireplace. Dining room doorways access patio. Two full baths. Central air and security system. \$184,000 646-6000 01-A-8353



OPEN SAT. & SUN. 1-4, 8596 Nowpork, N. of Cooley Lk., E. of Union Lk. WHITE LAKE. Four bedroom new construction. First floor study, family room with cathedral ceiling and fireplace, 2 1/2 baths, basement and 2 car attached garage. \$179,900 626-9100 02-B-8129



OPEN SUN. 1-4, 22255 River Ridge Trail, S. off 9 Mile, E. of Drake. FARMINGTON HILLS. Elegant 2 bedroom, 2 1/2 bath Townhouse with beautiful wooded views. Dramatic entry, soaring ceilings and 2-sided marble fireplace with oak mantel. \$179,900 626-9100 02-B-8448



WEST BLOOMFIELD. Wellington Woods offers the most home for the money. The transformed owners of this 4 bedroom, 2 1/2 bath Colonial are ready to move. Pleasant decor. Master suite with jacuzzi and walk-in closet. West Bloomfield garage. \$179,500 683-8900



OPEN SUN. 2-5, 5490 Nardo Ct., N. of Greer, E. of Hiller. WEST BLOOMFIELD. Wellington Woods! A prime cul-de-sac location! Ideal for little ones! Four bedroom, 2 1/2 bath Colonial. West Bloomfield schools. Possession at closing. \$177,000 683-8900 02-B-8429



OPEN SUN. 1-4, 3155 Paint Creek, W. off Adams, S. of Orion Rd. OAKLAND TWP. A trout stream flows by 12 enchanting acres. New windows, furnace, central air and heated outbuilding. New kitchen. Three bedrooms, den and family room. \$159,900 651-8850



WHITE LAKE. New lakefront home on all sports Mandon Lake. Quality construction. Offers 3 bedrooms, 2 baths, great room with fireplace, cathedral ceilings, ceramic baths, skylights and 1st floor laundry. 72' of lake frontage. \$159,000 683-8900 06-B-8021



TROY. Three bedroom Colonial on over a half acre lot. Large master bedroom with bath and 2 closets. Great room with fireplace. Ceramic foyer, dining room, library, full basement and 2 large decks - one is covered. Troy schools. \$159,900 689-8900 05-A-8347



OPEN SUN. 1-4, 3473 Hazelton, N. of S. Blvd., E. off Liverdine. ROCHESTER HILLS. Fabulous, updated 3 bedroom home on almost an acre. Updated roof, siding, water lines, carpeting throughout, lighting, some windows and more. Security system. \$137,900 646-6000



TROY. A fine 3 bedroom home on a half acre corner lot with gigantic trees. Huge great room, family room with fireplace, modern kitchen, rec room and 1 1/2 baths. All mechanical systems updated. Central air. \$134,900 689-8900 05-A-8286



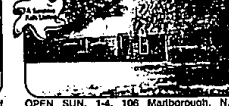
OPEN SUN. 1-4, 7104 Clements, S. of Maple, E. off Hagerty, Maple Place Woods. WEST BLOOMFIELD. Contemporary 2 or 3 bedroom Condo with 3 full baths. Neutral decor. Marble fireplace in great room. All appliances. Two car attached garage. \$129,800 683-8900



WATERFORD. Move-in condition 4 bedroom Colonial on a cul-de-sac in a desirable family sub. Many updates. Large closets and much storage. Family room fireplace, 2 1/2 baths and 2 car attached garage. Close to lakes, parks, elementary school. \$124,900 689-8900



OPEN SUN. 1-4, 33492 Alta Loma, W. of Farmington, S. off Grand River. FARMINGTON. An enchanting 3 bedroom hideaway close to city amenities. New windows. Newer furnace and roof. Dining room, 1st floor laundry and family room fireplace. \$124,900 626-9100



OPEN SUN. 1-4, 106 Marlborough, N. of Square Lk., E. of Woodward. BLOOMFIELD. Wonderful 3 bedroom Ranch. Dining room, rec room, living and family fireplaces. Hardwood floors. Kitchen appliances included. Bloomfield Hills schools. \$119,900 646-6000



OPEN SUN. 2-5, 9529 Buckingham, N. of Pontiac Tr., W. of Kingston. WHIRLWIND. Three lots with 165 feet of frontage on Pontiac Lake. Two bedrooms. Cape Cod with newer roof, vinyl siding and windows. Two car attached garage. \$114,200 683-8900



OPEN SUN. 1-4, 1107 Fernwood, N. of Catalpa, E. of Woodward. ROYAL OAK. Custom-built, one owner, 3 bedroom Ranch! Dining room, screened porch, tile foyer and hardwood floors. Newer furnace and central air. Finished basement. \$87,500 646-6000



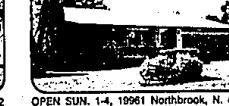
OPEN SUN. 1-4, 25250 Collins, S. of 8 Mile, W. of Farmington. FARMINGTON HILLS. Completely updated doll house! Newer roof, gutters and brick porch. Most windows replaced. Newer carpeting, bathroom tile and all appliances. Move in! \$83,900 626-9100 02-B-8435



OPEN SUN. 1-4, 18844 Hilton, N. of 10 Mile, E. of Santa Barbara. SOUTHFIELD. Well-maintained 3 bedroom Ranch. Family room fireplace, slate hearth and built-in grill. Hardwood floors under carpet. Living room fireplace and central air. \$89,900 626-9100



OPEN SUN. 1-4, 29235 Candlewood, N. of 12 Mile, W. of Southfield. SOUTHFIELD. Charming 3 bedroom, 1 1/2 bath Ranch. Newer kitchen. Neutral carpeting, hardwood floors, fireplace. Finished basement. Family sub with pool, tennis and park. \$88,900 626-9100



OPEN SUN. 1-4, 19961 Northbrook, N. of 12 Mile, W. of Southfield. SOUTHFIELD. Sharp 3 bedroom Ranch. Freshly painted. Hardwood floors, basement, 1 1/2 baths, family room fireplace. Swim club, tennis and park in neighborhood. Central air. \$87,200 626-9100



ROYAL OAK. This completely updated 3 bedroom Bungalow is in a great location. Offers tons of closet and storage space. Hardwood floors throughout. Large lot with spectacular view. Central air. Basement. Storage shed. \$87,000 689-8900 05-A-8285



FARMINGTON HILLS. Two bedroom townhouse in a beautiful secluded location. Newer carpeting. Light oak cabinetry, 2 skylights, decorator blinds and bay window. Soaring fireplace enhanced by dramatic vaulted ceiling. Tennis and pool. \$86,900 626-9100



WEST BLOOMFIELD. Don't pay rent when you can be overlooking Middle Strata Lake from this charming home! Beautiful park for lake privileges. Open great room, natural fireplace. French doors to heated Florida room with lake view. \$79,500 683-8900 06-B-8440



OPEN SUN. 1-4, 1248 Desaix, E. off Orchard Lk., W. of Telegraph. BLOOMFIELD. Charming 3 bedroom Cape Cod. Updated bath with new tile. Hardwood floors. Wood burning stove, Square Lake privileges, deck, grape arbor and flowering plants. \$68,800 683-8900 06-B-8332



ROCHESTER. Meticulously maintained 2 bedroom upper level Condo. In town and within walking distance of downtown, park shopping and library. Neutral decor. Master bedroom with large walk-in closet. Many major appliances stay. \$53,000 651-8850 04-A-6389

Considering a career in real estate? Would you like to join our winning team?
CALL 540-7200. BUILD YOUR FUTURE ON THE ROCK

The Prudential Great Lakes Realty

ROCHESTER
1160 Walton Blvd.
(at Livernois)
651-8850

BIRMINGHAM BLOOMFIELD
1520 N. Woodward
(at Long Lake)
646-6000

FRANKLIN FARMINGTON
31000 Northwestern Hwy.
(at 13 Mile)
626-9100

OPEN M-TH 9 a.m. - 9 p.m., FRI 9 a.m. - 7 p.m., SAT 9 a.m. - 5 p.m., OPEN SUNDAYS
An Independently Owned and Operated Member of
The Prudential Real Estate Affiliates, Inc.



TROY
3150 Livernois.
(at Big Beaver)
689-8900

RELOCATION OFFICE
800-521-1261

WEST BLOOMFIELD
4316 Orchard Lake
(at Lone Pine)
683-8900

