

**Now Available!**

**MARKET**

Exclusively from Real Estate One.

from **Real Estate One.**  
Michigan's Largest Real Estate Company



**OAKLAND**  
ARRIVE AT THE GATE, walk thru the English garden & step into a 3-story farmhouse, 7 acres and too many amenities to list. Call for your private showing.  
\$348,000 (BRE577) 852-6500



**BLOOMFIELD HILLS**  
FABULOUS CONTEMPORARY. If you love up North you'll love this bright open home made for entertaining. All white ultra-contemporary kitchen, vaulted ceilings everywhere. Huge master bedroom closet with built-ins.  
\$339,995 (D04) 851-8700



**WEST BLOOMFIELD**  
THIS LOVELY 5+ brick Tudor, done in neutral tones, overlooks Tammy Shafter Country Club. Multi level decking and a built in spa. This home has a touch of elegance and style. Bloomfield Schools.  
\$500,000 (FA) 851-1900



**BLOOMFIELD HILLS**  
WADEEK LAKE VISTAS - Contemporary lakefront. First floor master suite, library plus 2 bedrooms up. Complete finished lower level walkout with bar and family room, studio! Must see!  
\$489,000 (B14007) 644-4700



**BLOOMFIELD HILLS**  
TRADITIONAL TUDOR - 5 bedroom, 3 1/2 bath, lovely great room with fireplace, library with fireplace, over 4000 sq. ft., walking distance to Franklin, solid oak paneling & crown molding. Bloomfield Hills schools.  
\$399,000 (B1236) 644-4700

**Only**  
**Real Estate One**  
offers **MarketPower** -  
the most advanced  
computer technology  
designed specifically  
to market and sell  
your home.



**ROCHESTER HILLS**  
FOUR CAR GARAGE! This custom 1 1/2 story easily adapted to in-law suite offers the unexpected in gracious living. Many exceptional features in this 3300 sq. ft. home built in 88.  
\$324,900 (B15485) 952-5590



**FARMINGTON HILLS**  
PRIVATE AREA CUSTOM VIEWS - large spacious contemporary, ceramic tile, white kitchen, family room, den, 3 car garage. Better than new. Motivated seller. Show & sell.  
\$309,000 (MAR) 851-1900



**ROCHESTER HILLS**  
SPACIOUS TUDOR - Excellent floor plan for family living, with 4 fireplaces, 2 furnaces & 2 central air units. Splendid hilltop location. Park area for residents only.  
\$305,900 (B13480) 644-4700



**TROY**  
CUSTOM BUILT DAZZLING 4 bedroom colonial, with berber carpeting and Van-Leewen wall coverings sets itself above the rest! Entertain on the casual or formal side - A must see!  
\$295,000 (HAV) 851-1900



**WEST BLOOMFIELD**  
PRESTIGIOUS "PARK" Quality construction. Spectacular Frankel built home features marble & hardwood floors. Muscular kitchen, master bedroom suite 29x25 with adjoining exercise/sauna room, finished basement.  
\$294,900 (BLM) 681-5700



**BLOOMFIELD HILLS**  
ENJOY THE VIEW - Of Chaska Lake as you walk along Wing Lake Road in this exclusive, beautiful area. 4 bedroom contemporary featuring vaulted ceilings in living room & foyer. Bloomfield Hills schools.  
\$289,900 (B14740) 644-4700



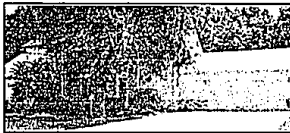
**BLOOMFIELD HILLS**  
BLOOMFIELD SQUARE COLONIAL - 4 bedrooms, 3/2 baths, Birmingham schools, move-in condition with spacious floor plan. Finished lower level. Popular resale price!  
\$279,900 (B12411) 644-4700



**FARMINGTON HILLS**  
STRATHMORE SUBDIVISION - Transitional Contemporary. 1st floor master bedroom, 2900 sq. ft. overlooking commons area. Great family oriented subdivision. Built 1998 in area of higher priced homes.  
\$279,900 (HOL) 651-1900



**BINGHAM FARMS**  
PRIVACY ABOUNDS in this BIGHAM ranch condo. Prime location in Bingham Woods with lawn, woods and ravine! 2 bedrooms, 2 1/2 baths and den.  
\$274,900 (B14532) 646-1600



**FARMINGTON HILLS**  
CONTEMPORARY ON GREEN ACRES! Down town Farmington, wooded lot, 2 story great room. Large deck, central air, sprinkler system, great use of natural light.  
\$282,000 (29OME) 952-5590



**FARMINGTON HILLS**  
PARK SETTING! GRAND TUDOR - Grand & gracious on premium property; decorator perfect. Realistic pricing. 4 bedrooms, 2 1/2 baths, finished rec room!!!  
\$254,900 (PLU) 851-1900



**BEVERLY HILLS**  
PRIVACY ABOUNDS! New build - sprawling 2000 p sq. ft. ranch on large private lot. 15x36 inground pool. Roomy kitchen with built-ins, fireplace, skylights, family room, air conditioning, security system.  
\$244,000 (DEL) 851-1900



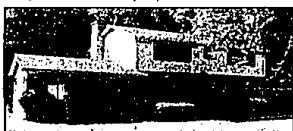
**BEVERLY HILLS**  
SPACIOUS, UPDATED, well maintained 4 bedroom, 2 1/2 bath brick colonial. Recently painted inside and out. Newer gas forced air furnace and central air, newer roof. 1st floor laundry. Birmingham schools.  
\$240,000 (B13920) 646-1600



**FARMINGTON**  
SPACIOUS, CUSTOM HOMES! Down town Farmington, great location, private yard, separate jacuzzi room, extra bedroom & bath in basement, large library, 1 year home warranty. Bring offers.  
\$239,000 (WES) 477-1111



**FARMINGTON HILLS**  
BEST BUY IN COUNTRY RIDGE - Over 2500 sq. ft. 2 story, 4 bedroom, library, formal dining, living and family rooms. Excellent condition, beautiful in-ground pool. New carpeting. Corporate owned.  
\$229,900 (COU) 851-1900



**BLOOMFIELD**  
OPEN SUNDAY 1-4PM! Charming Cross. 4 bedroom, 2 1/2 baths on beautiful 1.7 acre lot. Birmingham schools. Priced right to sell. Decorate and enjoy.  
\$225,900 (B10145) 646-1600



**FARMINGTON HILLS**  
BUY UNDER APPRAISAL - 4 bedroom pillared colonial. Lots of updates and a great rec room with wetbar. Roomy and ready for your family.  
\$225,000 (NOR) 851-1900



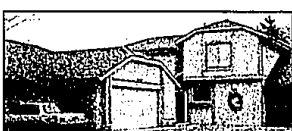
**WATERFORD**  
CRYSTAL CLEAR Elizabeth lakefront. 3 bedrooms, 2 bath quad level has heated 1 1/2 car garage. Tremendous views from new cedar deck & Anderson windows. Terraced lakeside patio and dock included.  
\$224,900 (S108D) 363-8307



**ROCHESTER HILLS**  
EXECUTIVE HOME! Model for 4 years. ceramic floors in foyer & guest bath, cathedral ceilings in great room, 3 car garage, security system.  
\$239,900 (CHA181) 852-6500



**ROCHESTER HILLS**  
QUALITY CALORE! Beautiful 4 bedroom, 2 1/2 bath home with many amenities. Crystal light fixtures, ceramic foyer & kitchen. Just move in and enjoy!  
\$219,500 (STO189) 852-6500



**BLOOMFIELD HILLS**  
CHARMING CONDO - 2 bedroom in Wadeek on the green. Move-in condition. Many updates: tiled garden room, kitchen, baths, newer furnace, water heater.  
\$195,000 (B11723) 644-4700



**BLOOMFIELD HILLS**  
BHM...IT'S A SECRET! Quiet country road leads to this charming 4 bedroom, 2 1/2 bath ranch, surrounded by trees! Bloomfield Schools.  
\$184,900 (B13697) 644-4700



**BLOOMFIELD TWP.**  
WHAT A SETTING! One acre for sale-as-is. Walnut Lake privileges. Great room with cathedral ceiling and full wall brick fireplace. 3 bedrooms, 2 baths.  
\$189,900 (MOH) 681-5700



**WEST BLOOMFIELD**  
STUNNING! 3 bedroom, 2 1/2 bath contemporary on lovely wooded stream lot, open floor plan, fireplace, new carpet, lower level walkout. A MUST SEE!  
\$187,500 (IND) 477-1111



**FARMINGTON HILLS**  
RANCH HAVEN! Beautiful contemporary home on landscaped lot backing to commons. 3 bedrooms, family room fireplace, attached garage. Home warranty.  
\$179,900 (CLE) 851-8700



**WEST BLOOMFIELD**  
PEBBLE CREEK! Quiet country road leads to this private guest quarters. Circular staircase, finished lower level, fireplace, garden kitchen, library.  
\$179,900 (CNC) 851-8700

**Real Estate One, Inc.**  
64th Year  
Equal Housing Opportunity

"Real Estate One Continued on Back of this section"