

Century 21

Town & Country

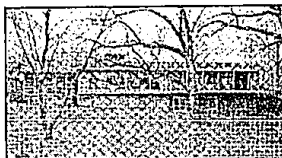
Members of: Birmingham-Bloomfield, Rochester, South Oakland County, North Oakland County and Macomb County and Western Wayne Oakland Co./Metro MLS Boards/Associations of Realtors.

Employee Relocation Council
International Relocation Consultants, Inc.

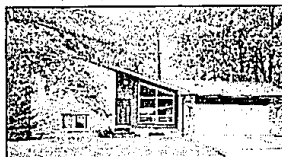


Century 21 Corporate Relocation Network
Approved Century 21 VIP Relocation Services

CENTURY 21 INTERNATIONAL
AWARD WINNING OFFICES



BLOOMFIELD TOWNSHIP. Brick Ranch on one acre wooded ravine lot with 4 bedrooms, 2 1/2 baths, dining room, 2 natural fireplaces, balcony, finished walk-out basement, cathedral ceilings. \$259,900 (65CED) OPEN SUNDAY. 524-1600.



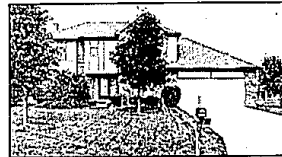
TROY. Look no further. This is your opportunity to live in this 170 square foot Troy Tri-level, 4 bedrooms, 2 baths. Great room has wood burning stove. Close to x-ways, shopping and schools. \$125,000 (43ELL) 524-1600



HARD TO FIND 4 bedroom ranch on beautiful parcel in Franklin. Over 3000 sq. ft. of quality. Plus rooms with hardwood floors throughout. Full basement, must see to appreciate. \$319,900 (75FRA) 642-8100



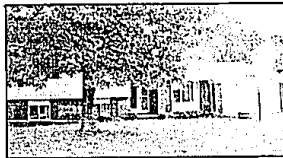
MOVE RIGHT IN! This classic colonial with quality appointments throughout. Spacious rooms, marble entry, hardwood floors, crown moldings, new kitchen, alarm and in-ground sprinkler system. \$439,900 (07STU) 642-8100



TRANSFERRERS DELIGHT!! Move in condition tudor, popular Rochester sub, crown moldings, hardwood floors, skylights, central air, dock, large kitchen, family room, living room, 4 bedrooms, 2 1/2 baths and more. \$176,500 (79KEA) 652-8000



CUSTOM BUILT CONTEMPORARY home on wooded acre lot in Oakland Twp. Master suite features fireplace, private screened porch and deck. Great room, den, 4 bedrooms, loft, gourmet kitchen, 3 1/2 baths. \$299,900 (24CAN) 652-8000



TROY. Well decorated 4 bedroom, 2 1/2 bath Quad in Troy's popular Mt. Vernon Sub. Spacious family room and laundry room are highlights. Well landscaped fenced and treed lot. Close to all schools. \$125,500 (92CUM) 524-1600



ROCHESTER HILLS. 4 bedroom, 2 1/2 bath Colonial, walk-out finished lower level. One of a kind wooded lot, bay windows in kitchen, formal dining, family room with doorwall leading out to two decks, hot tub. \$192,500 (36RAW) 524-1600



OPEN SUNDAY 1-4
ABSOLUTELY CHARMING 3300 sq. ft. fieldstone colonial with newer white formica kitchen. Huge formal living room and dining room. Spacious master bedroom suite, double stairwells going up and down. \$409,900 (86GLE) 642-8100



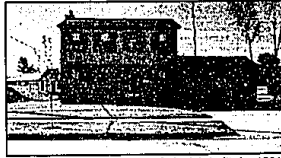
ENJOY ENTERTAINING in this unmatched contemporary home in Bloomfield. Has many exciting features, red oak hardwood floors, art gallery, lot, Solarium, 3 car garage, 1/2 acre private lot and more. \$239,000 (54ASH) 642-8100



STUNNING LARGE CONTEMPORARY in elegant Hawthorne Hills. First floor master, great room, 3 car garage. Loaded with amenities. \$305,000 (91OLD) 652-8000



ROCHESTER HILLS PRIME SUBDIVISION. 1st floor master w/bath, finished walk-out lower level, two staircases, security, kitchen with corian, all Jennafire appliances, 3 car garage with hot and cold water. \$379,000 (80CRO) 652-8000



TROY. 3 bedroom Brick Colonial built in 1991. Quality thru-out, full basement, corner lot, new carpeting, fresh paint, walk-in closets in all bedrooms, 2 1/2 car attached garage. \$129,900 (18BRI) 524-1600



TROY. Contemporary Brick Ranch in Troy, vaulted ceilings, hardwood floors, 3 bedrooms, 1 1/2 baths, finished basement, master bedroom has access door to full bath, 2 1/2 car garage, doorwall to deck and private yard. \$39,900 (20WAG) 524-1600



OPEN SUNDAY 1-4
ABSOLUTELY FABULOUS 1/4+ acre setting in Bloomfield. Renovated elevation, updated kitchen, master bedroom suite with closet and built-ins, Florida room, finished basement and Walnut Lake privileges. \$239,900 (18MAL) 642-8100



SHARP. Birmingham brick bungalow updated throughout, new kitchen, newer roof and furnace, deep lot, garage, finished basement. Wow! \$106,900 (62EMM) 642-8100



LARGE COLONIAL in desirable Adams West Sub. Freshly painted in white, loaded with amenities, lots of hardwood floors, gourmet kitchen. Walk to Rochester schools, move in condition. \$255,000 (45JAS) 652-8000



THIS GORGEOUS 4 bedroom Shadow Woods Tudor, ceramic entry with spiral staircase, a huge master bedroom with master bath and jacuzzi, finished basement, central air, alarm, sprinklers and much more! \$184,900 (05POW) 652-8000



WEST BLOOMFIELD. All Sports Walnut Lake home offers 4 bedrooms, 2 1/2 baths, some updating. All appliances included, partially finished walk-out. Birmingham Schools. 2 1/2 car garage. A Must See! \$189,500 (55PUT) 524-1600



TROY. Fabulous 2 story colonial in North Troy. New kitchen and bath, great room with corner fireplace, secluded yard with covered deck and view of spring-fed pond. Many updates. \$132,000 (00ATK) 524-1600



SPACIOUS COLONIAL in popular family sub in Birmingham Schools. Over 3000 sq. ft. in this original owner residence. Huge rooms in excellent condition, 4 bedrooms, 2 1/2 baths, family room. \$269,900 (38STM) 642-8100



PHENOMENAL VIEW, stroll into this center entrance colonial on the golf course. Foyer has new ceramic tile, 4 bedrooms, family room with wet bar, recessed lights, full wall fireplace, dining room, large kitchen. \$189,894 (19TEQ) 642-8100



TONS OF ROOM! Nearly 4,000 sq. ft. of home, 4 bedroom colonial in Rochester Hills. Finished basement, 2 fireplaces, master suite, security system, sprinklers, huge custom deck and Florida room. \$290,500 (30HIC) 652-8000



UNIQUE FAM MODEL in THORNBRIDGE SUB, 2 staircases, central vacuum, intercom, security alarm, central air, master bath w/jacuzzi, hardwood floor in kitchen & island, balcony in sitting room, landscaped. \$374,900 (81WHI) 652-8000

4820 Rochester Rd.
Troy, MI 48098
524-1600
Hrs.: Weekdays 9-9
Weekends 9-5

294 E. Brown
Birmingham, MI 48009
642-8100
Hrs.: Weekdays 9-8
Weekends 9-5

722 W. University
Rochester, MI 48307
652-8000
Hrs.: Weekdays 9-8
Weekends 9-5

Director of Relocation
Services,
Linda Scope
Local: 680-4457
Toll Free: 1-800-448-5817

