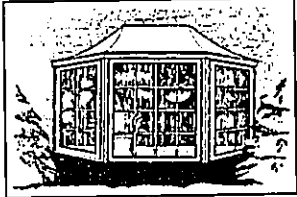
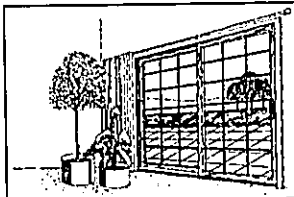


Active One Construction Company, Inc. presents the Eagle Window Special

EAGLE DOORWALL

EAGLE BAY WINDOW



\$1295.00
Installed

Starting at \$1495.00

Including Birch Head & Seat, Casing & Installation



"Discover the Difference"

Give us
a
call today

Active One
Construction
Company, Inc.
422-2450
License 2102092103 Insured

for your FREE
in home
estimate!

Tips, from page 4

•Furnace: You haven't done a thing to the furnace all summer long. Now is the time to clean around the furnace. Make it really immaculate. Remember, any dirt around the furnace will be sucked into the furnace air intake within the first few days of operation. Replace all furnace filters, or clean electronic filters, NOW.

Completely clean the humidifiers. Use vinegar and hot water. Drum model sponges should be soft and supple. If not, replace. Make sure the valve works, if the buoy is corroded, replaced.

•Hot Water Heater: You are going to be using a lot more hot water soon. Drain at least 20 gallons of water from the tank. Try to get rid of some of the sediment build-up at the bottom. If your hot water tank is over 10 years old, it needs to be replaced.

Buy yourself some peace of mind now, rather than wait until it breaks down right when you are getting ready for work.

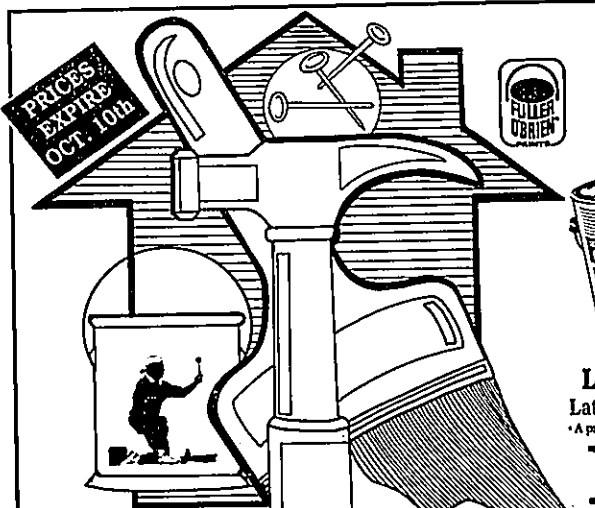
•Smoke and Carbon Monoxide Detectors: Go around the house and replace the batteries in all the smoke detectors, NOW. Do this at the same time every year. If your smoke detectors are hot wired, test them. Make sure you have at least one smoke detector on every floor.

Carbon monoxide detectors are also necessary. You can get inexpensive button detectors at all hardware stores. Put them in your bedroom. Or, you can buy the new

electronic carbon monoxide detectors, by First Alert and other companies, which are just coming out in the market place as you are reading this article. Carbon monoxide detectors are very necessary because, as we make our homes tighter, we breathe in the same air over and over again, making us somewhat susceptible to traces of carbon monoxide in the air. Carbon monoxide is odorless, tasteless, but very deadly. Be prepared, look for a carbon monoxide detectors at your hardware stores and home centers.

Now I guess that all there is to say is "Let it snow, let it snow, let it snow." These are some of the best tips we can give. I call them "bragging rights."

Glenn Haege is host of the "Ask The Handyman" how-to talk show on WXYT AM 1270-Detroit, which airs every Saturday and Sunday from 8 a.m. to 12 p.m. Haege has written four books: *Fix it Fast and Easy!*, *Take the Pain out of Painting! - Interiors*, *Take the Pain out of Painting! - Exteriors*, and *Glenn Haege's Complete Deck Care Guide*, available at Damman Hardware and many other fine paint and hardware stores. The books are also available at Paper Backs Unlimited, Borders and all area W. B. Dalton, Doubleday, Noble and Walden Bookstore, or by calling Master Handyman Press 1-800-524-5391.



PRICES
EXPIRE
OCT. 10th



Liquid Velvet
Latex Flat Wall Paint
• A premium paint for easy coverage.

15.99 Gal.
SKU #493-635
MFG #602-00



Your Choice
Liquid Lustre
Latex Eggshell Enamel

• Distinctive low sheen for interior walls and trim.

Liquid Satin
Latex Wall & Trim Enamel

18.99 Gal.
Each

• A washable satin finish for beautiful interior walls and trim.



Ful-Flo
Latex Semi-Gloss Enamel
• Scrubbable finish for interior walls and trim.

19.99 Gal.
SKU #495-093
MFG #614-00

The
SMARTEST
way to do your HOME WORK

COMPE-U-MATCH

Damman's Color Smart Computer

With COMP-U-MATCH any Damman store can give you a custom formula to match virtually any sample you bring in. It can even match colors of other brands of paint.

DAMMAN HARDWARE

YOUR HOME CENTER
STORES



OPEN 9-9 DAILY

OPEN SUNDAY 10-5

Detroit 577-8800
Birmingham Bloomfield 626-3010
Warren 759-1120
Sterling Heights 261-0020
Rochester 652-8100
Troy 609-0787

Farmington 471-1256
Grosse Pointe 882-9220
Southfield 258-8144
St. Clair Shores 777-2950
Dearborn Heights 278-0350
Royal Oak 363-2811

Union Lake 350-0400
Livonia 482-0666
Clermont 620-1144
Clinton Twp 790-0110
Novi Opening Soon