



TRANSFORMATION HITS TEL-TWELVE!

While it may seem like it, there is really no magic involved... Tel-Twelve's exciting multi-cable program to make shopping more exciting and convenient is working! Shoppers are pleased with the additions and upgrades, and find themselves spending even more time at Tel-Twelve Mall.

One of the newest and most exciting changes being made is with Winkelman's. Winkelman's is doubling... shoe, coat and suit departments. With approximately one half of this new store open, the Winkelman's project will be complete by mid-November in time for holiday shopping.

As part of this expansion of fashion options, Martine/Martine Plus recently opened a showcase store in a larger location just off the mall's food court. The additional space allows for an enhanced selection of plus and junior sizes and features the career look.

Here to will soon be sporting an entirely new store. Rave, the place for trendy jewelry, handbags, will open in their new location mid-November.

In the main mall, Simpson Shoes is now celebrating their Grand Opening. Simpson Shoes,

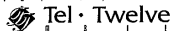
featuring undoubtedly one of the finest selections of ladies shoes offered, Joerin, Ann Marino and Nicola as part of an outstanding selection of desirable names, with most shoes priced from \$60 to \$130.

Other collaborations are in order for the recent addition of Office Depot at the south end of the mall. Office Depot offers over 27,000 sq. ft. of everything for the office at home or at work. Office Depot is "Taking Care of Business" and the perfect solution to today's busy lifestyle.

Tel-Twelve Mall itself has instituted new programs, as well. The mall's Preferred Shopper program allows customers to find additional savings at select stores and enjoy special perks.

For enhanced customer service, there is now a new Customer Service Center in the main mall area. The Customer Service Center will have stylists, and specialists, Tel-Twelve Mall Gift Certificates, lost and found, and promotional information from Tel-Twelve stores.

While shoppers will enjoy the new appeal of Tel-Twelve Mall right now, they will be further impressed as more changes unfold.



Featuring Cowley's, Kinat, Montgomery Ward, MC Sporting Goods, Ruby Tuesday and 70 other fine stores.



Ferocious shark. Starting out with the number "5," author-illustrator Jose Aruego drew first the teeth and then the rest of the shark.



Steve Pomeroy for the Observer

Paper and pens

Writer-illustrator draws pupils into art world

By MARIE CHESTNEY
Writes

Pigs, snakes, eagles and owls all took shape last week under the watchful eye of the world-renowned writer-illustrator Jose Aruego.

Aruego left his apartment in Manhattan to spend the day teaching drawing techniques to students at Stoteland and Grandville elementary schools in the Clarenceville School District, which includes the southeast corner of Farmington Hills. His visit was paid for by the parent-teacher organizations of both schools.

Aruego brought the artistic world closer to the students by having them draw various cartoon-type ani-

mals along with him as he was finishing them on giant paper.

"The kids had paper on the floor and looked up and down as he drew," said Pat Brown, media specialist for Stoteland.

Aruego divided his program into two parts, one geared for youngsters up to third-grade level and the other for students in the higher grades.

The artist began his presentation with slides showing his apartment in New York and the room where he works. The slides showed parts of his apartment that he had used in his books, including plants growing up along a four-poster bed and a grandfather clock.

He also showed slides of some of

the animals he had drawn and slides of some of the same animals drawn by youngsters in video programs he had held.

"That way, the children could see how other youngsters had drawn the same things," Brown said.

Aruego has illustrated more than 60 children's books, including "Leo the Late Bloomer," "Rockaby Crocodile" and "Whose Moose Are You?"

"His goal is to make children laugh," Brown said. "He is a very humble man."

Aruego told the students how he started his career as an attorney and drew cartoons on the side. After many rejections, he learned the

tricks of the trade and became successful in both writing and illustrating.

Instead of just drawing for the youngsters, Aruego in his classroom visits insists that children draw along with him.

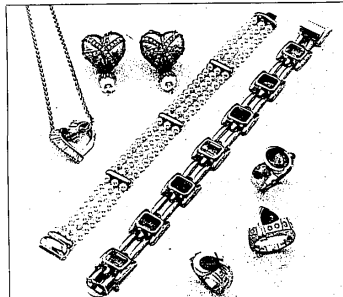
"It makes it more exciting for them," Aruego said.

Aruego photographed and made special drawings in the books that he brought along to sell to the children.

"The man is so dedicated to what he does, he drew a picture in every single child's book," Brown said. "He stayed from 3-8 p.m. signing the books. He wanted every child to have something to remember him by."

Creating a shark: Transitioned first graders Becky Maitland, Cassidy Sublette and Larissa Etheridge start out with the number five and wind up with a shark.

Luster, Brilliance and Color now appearing at Greis Jewelers



The dazzle of diamonds, the pure beauty of pearls or the spectrum of semi-precious stones. Surround each with gold in inspired designs and you've got the Greis Jeweler's fall collection. Fall colors never looked so good.



32940 Middlebelt Rd. (At 14 Mile Rd. in the Broadway Plaza) Phone: 855-1730 Farmington Hills, Michigan

BOTSFORD GENERAL HOSPITAL EMERGENCY SERVICES

We've grown to care for you.

In a medical emergency, you want the best treatment as quickly as possible — at a major hospital that provides medical care in over 20 specialties. At Botsford, our Certified Emergency Specialists are available 24 hours, every day.

Botsford's expanded Emergency Department is designed to meet the growing needs of our community. A helistop, dedicated emergency x-ray facility, and specialized care rooms allow us to care for complex emergencies as well as quickly treat minor injuries and illnesses. For your convenience, there's reserved

parking and a comfortable waiting area.

Botsford General Hospital is located near major expressways and roads. Our expanded Emergency Department, opening November 9, is just another way we've grown to care for you.

Botsford Emergency Department continues to be open 24 hours, every day. As of November 9, our urgent care hours will be extended to 9:00 am-11:30 pm, every day. Botsford Emergency Department: (313) 471-8556.



Reaching out to the people of our community.
28050 Grand River Avenue • Farmington Hills, MI 48336-6933
©1993 Botsford General Hospital

