

Best F-Series Lease Ever!



TRUCK MONTH

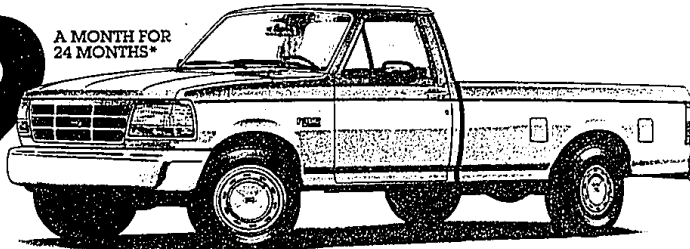


NOW! LEASE AMERICA'S BEST-SELLING TRUCK

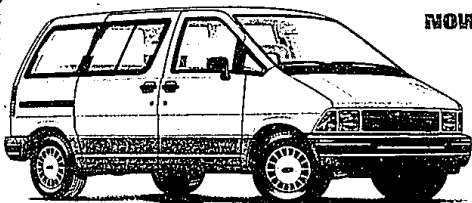
Down Payment \$1,289.00*
 Refundable Security Deposit 200.00
 First Month's Payment 179.00
 Total Due at Signing \$1,668.00

\$179

A MONTH FOR 24 MONTHS*



'94 FORD F-150 4x2



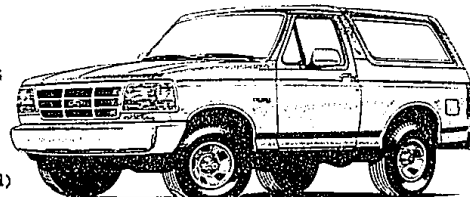
NOW GET

6.9%

A.P.R. FINANCING

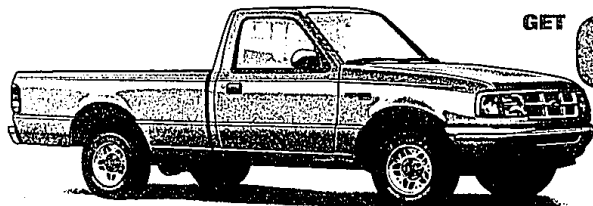
\$1000

CASH BACK (1)



'93 FORD AEROSTAR XL PLUS

'93 FORD BRONCO XLT



GET

6.9%

A.P.R. FINANCING

\$300

CASH BACK (1)

Save \$1000(2) when you buy Preferred Equipment Package 864A on '93 Ranger XLT 4x2 w/manual trans.

Combine Option Package savings of \$1000 with Cash Back(1) for a total value of \$1300. Package includes:

- 2.3L Engine/5-Speed Manual
- AM/FM Stereo Cassette
- Chrome Rear Step Bumper
- Power Steering
- And More

'93 FORD RANGER XLT

\$1300

SAVE UP TO (3)

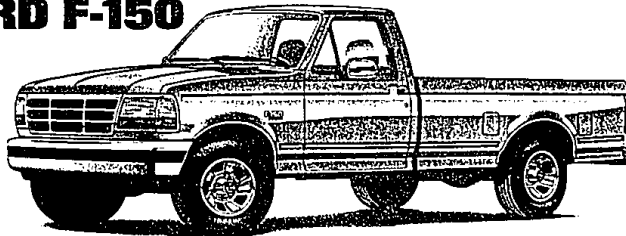
\$1300

SAVE UP TO (2)

'93 FORD F-150

Save \$1300(2) when you buy Preferred Equipment Package 507A on a '93 F-150 4x2, 4.9L w/manual transmission.

ALSO ASK YOUR DEALER ABOUT ADDITIONAL INCENTIVES ON THE '93 F-SERIES!



*1994 F-150 4x2 Special with P.E.R. 498A, 4.9L manual trans. M.S.R.P. \$14,078 excludes title, taxes, license fee. Lease payment based on an average capitalized cost of 93.49% of M.S.R.P. for 24 month, closed-end Ford Credit Red Carpet Lease, purchased in the nation through September 30, 1993. Some payments higher, some lower. See dealer for payment and terms. Lessee may have the option to buy vehicle at lease end at a price negotiated with the dealer at lease signing. Lessee responsible for excess wear and tear, and mileage over 30,000 at \$.11 per mile. Credit approval and insurability determined by Ford Credit. Take new retail delivery from dealer stock by 1/4/94. Payments total \$4,296.00.

(1) Cash Bonus or 6.9% A.P.R. Financing through Ford Credit for qualified buyers. 48 months at \$23.90 per month per \$1000 financed with 10% down. Dealer participation may affect savings. Take new retail delivery from dealer stock. Limited-time offer. Excludes Ranger Splash. (2) Savings based on Manufacturer's Suggested Retail Price of Option Package vs. M.S.R.P. of option purchased separately. (3) Total savings based on Cash Back plus Option Package savings.

Visit your METRO DETROIT FORD DEALER throughout the Tri-County Area...



Bloomfield Hills
ALAN FORD
 1845 S. Telegraph
 543-2030

Centerline
BOB THIBODEAU
 26333 Van Dyke
 755-2100

Canton Twp.
RUS MILNE FORD
 43073 Gratiot Avenue
 293-7000

Dearborn
FAIRLANE FORD SALES
 14585 Michigan Avenue
 848-5000

VILLAGE FORD
 23535 Michigan Avenue
 565-3900

Detroit
JORGENSEN FORD
 8333 Michigan Avenue
 584-2250

STARK HICKEY WEST
 24760 W. Seven Mile Road
 538-6600

RIVERSIDE FORD SALES
 1833 E. Jefferson Avenue
 567-0250

Farmington Hills
TOM HOLZER FORD
 39300 W. 10 Mile Road
 474-1234

Farmdale
ED SCHMID FORD
 21600 Woodward Avenue
 399-1000

Fiat Rock
DICK MCQUISTON FORD
 22575 Gibraltar Road
 782-2400

Livonia
BILL BROWN FORD
 32222 Plymouth Road
 421-7000

MI. Clemens
MIKE DORIAN FORD
 39000 Gratiot Avenue
 782-4100

Northville
MCDONALD FORD SALES
 550 W. Seven Mile Road
 349-1400

Oak Park
MEL FARR FORD
 24750 Greenfield
 967-3700

Plymouth
BLACKWELL FORD
 41001 Plymouth Road
 453-1100

Redford
PAT MILLIKEN FORD
 9600 Telegraph Road
 255-3100

Rochester
HUNTINGTON FORD
 2890 S. Rochester Road
 352-0400

Royal Oak
ROYAL OAK FORD
 1500 Woodward Avenue
 548-4100

Southfield
AVIS FORD
 29200 Telegraph Road
 355-7500

Southgate
SOUTHGATE FORD
 16501 Fort Street
 282-2636

St. Clair Shores
ROY O'BRIEN
 22201 Nine Mile Road
 776-7600

Sterling Heights
JEROME DUNCAN
 8000 Ford Country Lane
 258-1200

Taylor
RAY WHITFIELD
 10725 S. Telegraph Road
 291-0300

Troy
TROY FORD, INC.
 777 John R
 585-4000

DEAN SELLERS FORD
 2300 W. Maple Road
 643-7500

Warren
AL LONG FORD
 1371 E. Eight Mile Road
 777-2700

Waterford
FLANNERY MOTORS
 5900 Highland Road
 356-1200

Wayne
JACK DEMMER FORD
 37300 Michigan Avenue
 721-2500

Westland
NORTH BROTHERS FORD
 33300 Ford Road
 421-1500

Woodhaven
DORNO FORD
 22025 Allen Road
 676-2200

