

Consider holiday gifts that show a lot of art

A visit to galleries around Oakland County shows that holiday gifts can come from the art as well as from the heart.

Recycled materials become original works of art in an exhibit this month at the Ariana Gallery, 386 E. Maple in Birmingham (call 647-6465). Garden sculptures by Robert Cumpston are made from rusted farm implements. The tools become such creatures as birds and turtles. Other garden paintings, fashioned from rusted or patinated metal, include a musician in profile that stands alone and suns, insects and animals perched on rods to stick into the ground.

Trapezoid-shaped painted and riveted decorative boxes by Polly Harrison are made from recycled aluminum newspaper printing plates. Harrison also makes woven baskets of plaited 16mm film. Film folded into points forms the outside of the basket. When you look inside, you see rows of images on the frames of film on the bottom of the basket. They look like patterns in sec-

tions of tiny quilts.

Ernie Katz's "spoon people," shining at you from the wall, are made out of utensils and found objects. The bowl of a spoon becomes a head, the handle a body; little forks are turned into arms and fingers. Heavier utensils are bound with bright ribbon to make unusual wall decorations.

"Guardian angels" by Janey Katz, also arranged on the wall, consist of such material as license plates, wheels and gears. Lush, thick wreaths by Susan Starr combine scraps of fabric, tinsel and ribbon. Gloria Gerber forms jewelry from ID tags and other pieces of metal.

Classic look

The Circle Gallery, in the Somerset Collection at Big Beaver Road and Coolidge in Troy, celebrates the season with a display showcasing an art-to-wear collection by Erte, the legendary art deco master. The exhibit continues to Jan. 2. Call 649-1779.

Erte was a pioneer in fine art, fashion, theater design and the decorative arts. His elegant, lav-

ish designs adorned stages and magazine covers. The collection at the Circle Gallery brings Erte's art to a smaller, but no less dazzling, scale.

The pieces include a series in which miniature art deco figures form letters of the alphabet. A blizzzing peacock ring features a garnet in the center of a gold and diamond arrangement that fans like a peacock's tail. Other rings, earrings and necklaces have graceful, flowing lines that contain little images or detailed styling.

Season's sightings

Holiday decorations available from Watch Hill Antiques, 330 E. Maple in Birmingham (call 644-7445) have a personal touch. They include Santa and Trapper figure hand made by Jane Kimball. Each figure, about 12 inches tall, has a personality of its own. Among them are a Victorian Santa, with long, red coat, and bearded figures with knit caps. They are dressed in such materials as wool, mink and remnants of quilts, and carry little walking

sticks that are gathered by the artist from along the shore of Lake Michigan.

The shop is also displaying and selling a hand-restored, Portland Dutch antique sleigh from the turn of the century. The black, horse-drawn sleigh with red interior has room for two passengers and a driver. It sells for \$1,995.

Familial name

Oil paintings by Yuri Gorbachev, the nephew of Mikhail Gorbachev, are exhibited at Galleria 454, 176 S. Woodward in Birmingham (646-4454). Gorbachev's paintings are bright, joyous explosions of color. The gallery's Mark Doren described one work, a winter scene featuring a church and skiers, as a "Russian Grandma Moses."

The artist's process includes scratching the canvas with a palette knife and adding lines or leafs of gold. Images are bold and flat. Among them are musicians and strange animals. The paintings have an Aztec or Asian air.

Motion pictures

Impressionist painters inspired

■ A visit to galleries around Oakland County shows that holiday gifts can come from the art as well as from the heart.

Caren Nederlander's photographs, on display this month at the Pierce Street Gallery, 217 Pierce in Birmingham (call 646-6950).

Nederlander, a Birmingham resident, deliberately moves the camera while shooting. This results in blurs and distortions of colors and forms in the photos, making them look like impressionist paintings. Trails, azaleas, daffodils become fuzzy bands. Tree branches take on a wispy, feathery quality.

Some photos have a magical look. An old barn seems to be fading into history right before the viewer's eyes. Part of a picket fence is discernible in the center of a vague arrangement of colors.

New dimension

The ordinary becomes extraordinary in work by Eddie Dominguez, exhibited through Dec. 18 at The Wetman Collection, 132 N. Woodward in Birmingham (call 645-6212). Dominguez uses lavish colors and effects in his art. "April Showers" features rain of wire and nails over a photo collage. "Rose Garden" consists of large flowers that are made up of cups and plates. "Catch of the Day" is presented in what looks like an aquarium.

Mary Klemic is editor of the Oakland County Creative Living section. You may call her at 901-2569. Her fax number is 644-1314.



Oakland volunteers: Area residents serving on the new Volunteer Committee board of directors at the Detroit Institute of Arts Founders Society are Lois Lesser (left) of Birmingham, Martha Beechler of Bloomfield Village, Judy Knowles of Birmingham, Janet Prince of Bloomfield Hills and Susan Troia of Rochester.

Volunteers called crucial to art museum's operation

"Our volunteers are an increasingly crucial part of running the museum," says Samuel Sachs II, director of the Detroit Institute of Arts.

"I'm overwhelmed by how they come through for us year after year. They're incredibly dedicated, organized and innovative."

A new 61-member board of directors has just taken charge of the Volunteer Committee of the DIA Founders Society. The volunteers now number 342, a 64-percent increase from last year.

A large part of this increase was from Gallery Service, the newest of the eight volunteer committees. Gallery service volunteers greet and assist visitors in the museum's galleries. Having them in the galleries makes it possible for all the galleries to stay open.

The seven other volunteer committees are Gallery Information,

welcoming and assisting visitors at the information desks; Staff Aides, handling the vast DIA paper mill; Art to the Schools, presenting the DIA collection via slides at schools; Docents, conducting public and school tours of the museum; Speakers Bureau, giving slide talks on more than 40 topics; Volunteer Membership, manning the Founders Society membership desks; and Museum Shops, assisting in sales at the three shops.

Area residents serving on the board of directors include Lois Lesser of Birmingham, chairman; Susan Troia of Rochester, chairman, docents; Martha Beechler of Bloomfield Village, vice chairman, docents; Janet Prince of Bloomfield Hills, chairman, gallery service; and Judy Knowles of Birmingham, chairman, speakers

bureau.

Among other committee members from the area are David Call of Birmingham, first vice chairman, volunteer membership; Elaine Redmond of Birmingham, chairman, public relations; Marlene Castaing of Bloomfield Hills, chairman, records and awards; and Shirley O'Brien of Birmingham, chairman, welcome.

More are Linda Wells of Birmingham, chairman, Friends of Art and Flowers liaison; Key Duncan of Birmingham, chairman, nominating; Leslie Lazerer of Bloomfield Hills, second vice chairman, gallery service; Wendy Evans of Bloomfield Hills, photo coordinator; and Judith Lapp of Bloomfield Hills, chairman, trip. The museum is open 11 a.m. to 4 p.m. Wednesday-Friday and 11 a.m. to 5 p.m. Saturday-Sunday.

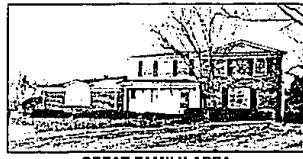
HOMES OF QUALITY ARE OUR SPECIALTY!



NEW CONSTRUCTION
Premium Kirk in the Hills location. Quality workmanship throughout. Impressive entry, 5 bedrooms, 4 full and 3 half baths and more. Still time to choose colors and materials. Only home left at interior of sub. \$1,150,000 B-12911



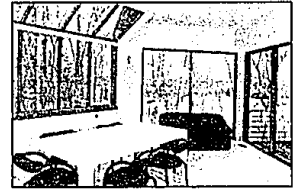
*Spectacular
Builder's
Own Home*



GREAT FAMILY AREA
Perfect family colonial with Bloomfield Hills schools. Large bedroom sizes, hardwood floors, 6 panel doors, plaster walls, coed ceilings, newer mechanics, roomy breakfast area. \$365,000 B-17043



LAKE PRIVILEGES
Custom home with Upper Stratts Lake privileges on nearly an acre of natural woods! Hardwood floors, wet bar, fireplace, media room and many more great features. \$599,900 B-16803



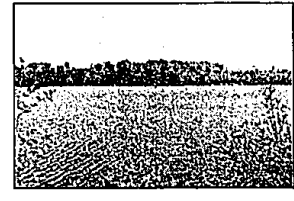
WALLACE FROST CHARMER
Completely updated with beautiful large premium lot! Five bedrooms, Pavalite tile in bathroom, 3 fireplaces, delightful summer porch and so much charm! \$499,000 B-16680



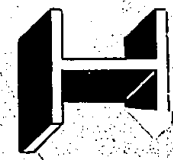
FRANKLIN
One acre setting. Living room with cathedral ceiling and fireplace, family room with second fireplace, Florida room, finished walk-out lower level. An area of fine homes. \$239,000 B-12548



Magnificent customized contemporary on beautiful Lake Wabek. Ultimate open floor plan with soaring 10 foot ceilings throughout. Fabulous master suite with fireplace and customized ultimate bath (shower, Jacuzzi, steam sauna). Phone for further amenities on this very special property! \$1,350,000 B-10482



GREAT LOCATION
Move right into this beautifully maintained home. Lots of recent updates (roof, sprinkler system, landscaping, large deck). Two full baths on first floor. Large great room. \$166,000 B-13720



Hannett, Inc. Realtors

2511 w. maple at cranbrook **646-6200** bloomfield hills, mi 48301
open monday through friday 8:30-7:00 p.m., saturday 9-6 p.m. and sunday 10-6 p.m.

★ ★ Estates Club ★ ★
club for the world's leading real estate firms

