

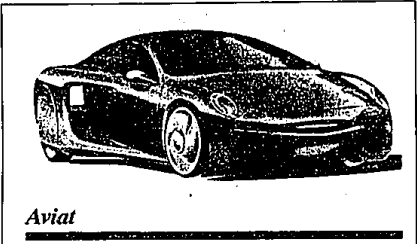
Page 10 (O)

Auto Show / Thursday, January 6, 1994

Change, Excitement will be ever-present at 1994 North American International Auto Show

A new minivan, convertibles, a diesel-powered luxury car and innovative concept vehicles are the most recent additions to the long list of vehicles to be introduced at the 1994 North American International Auto Show.

The list of production and concept vehicles to make their worldwide or North American debut at the show, including vehicles still embargoed, is now over 40.



Aviat

The Aviat combines aerospace technology with dynamic attributes.



Venom

The Venom remains affordable, efficient and back-to-basics in concept and execution.



Expresso

Expresso is about two feet shorter and 15 inches taller than the Neon.

Chrysler's Concepts

New Chrysler concept cars, which make their worldwide debut at the 1994 North American International Auto Show, are a graphic example of the flexibility of the company's new Neon platform and suggest the future direction of the company.

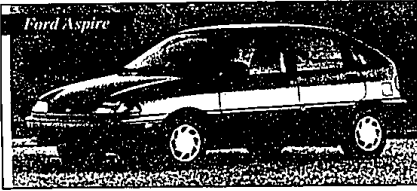
The Venom, Expresso and Aviat showcase the Neon's ability to be the basis for a wide-range of exciting small vehicles. Each concept car not only shares the Neon's platform but also its fun-to-drive performance, innovative design, environmental sensitivity and Chrysler's "dare to be different" attitude. Yet each has its own unique personality. The Neon itself first appeared as a concept at the 1991 NAIAS.

The Aviat combines aerospace technology with world-class dynamic attributes to redefine the sports coupe for the 21st century. The overall footprint of the sleek, all-aluminum Aviat is very close to the Neon, but the rear seat is about the same width as a LeBaron convertible.

The Aviat is powered by the Neon's 2.0-liter engine, but the cool-

not a station wagon. It's a travel-friendly, fuel-efficient, roomy vehicle that is about half the size of a full-size New York taxi.

Expresso is about two feet shorter and 15 inches taller than the Neon, powered engine. Some of Expresso's travel-friendly features include: storage under the front seats that matches airline under-seat standards; comfortable high-chair seating; sight-seeing windows; and a unique navigation and entertainment center.



Ford Aspire

The Aspire is Ford's newest small car.

Fundamentally Ford

Ford's all-new minivan, the Windstar, will be unveiled to the world at the auto show. The van will go on sale in the spring.

The Ford Aspire will also make its worldwide debut at the show. It goes on sale in the first quarter of 1994. The Aspire is Ford's newest small car. It is expected to be the least expensive car sold in the U.S. available with standard dual airbags. Buyers have the choice of a three-door or five-door model.

In addition to standard dual airbags, the Aspire can be equipped with anti-lock brakes as an option. The Aspire replaces the Festiva. It is built by Ford's partner, Kia Motors, in South Korea.

Saab

Saab will use the 1994 NAIAS for the worldwide unveiling of two automobiles: the 900 convertible and three-door hatchback. It marks the first time Saab has made a worldwide introduction anywhere in the United States. The Saab 900 was redesigned for 1994.

"We're holding the worldwide debut of these cars in the U.S. because the U.S. market is so important to Saab," said company spokesman Steve Rossi. "Thirty percent of our worldwide volume is sold in the U.S. The U.S. is Saab's single largest market."

Mitsubishi

Mitsubishi will display for the first time at a North American auto show the HSR-IV concept vehicle. The HSR-IV alters the characteristics of the automobile to match the driving skills and preferences of individual drivers. It does this by using an artificial intelligence system that has a "learning" capability with advanced safety technologies.

Now in its fourth generation, the HSR technology combines a compact, environmentally clean engine with a sophisticated integration of active four-wheel technologies, advanced auto-drive features and aerodynamic style.

Mercedes-Benz

Mercedes will unveil to the world the E300 Diesel, a new high-

efficiency full-size car that will be sold in all 50 states beginning in early January.

Powered by the industry's first four-valve-per-cylinder diesel engine, the new model features ultra-clean exhaust and a cruising range of more than 700 miles between fill-ups. Four-valve-per-cylinder technology provides more complete combustion for very low exhaust emissions and efficient power.

It is also equipped with exhaust gas recirculation and a catalytic

converter, unusual in a diesel. The net result is that the new Mercedes is the only diesel car which meets California's and New York's stringent emissions standards.



Mazda Millenia

Mazda will market the new mid-size luxury sedan in the U.S. in the spring as a 1995 model.

market the new mid-size luxury sedan in the U.S. in the spring as a 1995 model. The car was resurrected from the Amati line, which was to be a luxury distribution network formed by Mazda.

The Millenia offers a choice of two dual overhead camshafts, 24-valve V6 engines. It features a new four-wheel independent suspension. Anti-lock brakes and dual airbags are standard. Traction control is optional.



BMW E1

BMW will display for the first time in North America two concept vehicles, the E1 and Z13.



BMW

BMW will display for the first time in North America two concept vehicles, the E1 and Z13. Both represent BMW's thinking regarding future issues like traffic congestion and the environment.

The E1 was developed to be a small, safe environmentally friendly city car. It can be equipped with an internal combustion engine, an electric power train or a hybrid with both drive

systems combined. It is built on an aluminum frame with panels of both aluminum and recyclable plastic. BMW has said the E1 has a good chance of being produced in the future.

The Z13 is an extremely compact three-seater concept car with the engine in a rear-midship arrangement. It is rear-wheel drive, typical of a BMW. Its cockpit is like a single-seater racing car, but the driver sits in the middle and passengers sit in full-sized seats, half

of them next to the driver and the other half behind.

The Z13 also has an aluminum frame and body. It is driven by a water-cooled 1100-cc straight-four power engine fitted crosswise in front of the rear axle. It is estimated the vehicle could achieve 47 to 56 miles per gallon. The Z13 includes numerous high-tech features.

Porsche

Porsche will unveil to the world its 1995, 911 Carrera Cabriolet,