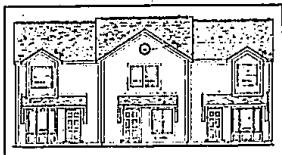




SINCE 1918
Chamberlain
REALTORS®

**BIRMINGHAM**

CHARMING CAPE, beautifully located on corner lot. Lots of updates include central air, furnace, alarm system and more. Great 15x9 screened porch.
\$224,900 (W-195E) 647-6400

**BIRMINGHAM**

TRIPLEX 3,200 sq. ft. building with 3 large apartments soon to be constructed. Each unit has 2 bedrooms, 2 full baths, large kitchen and laundry area.
\$275,000 (F-149E) 647-6400

**BLOOMFIELD**

LAKE FRONT SPLIT LEVEL with panoramic views from 800 sq. ft. of decking, 3 bedrooms, family room, 2 fireplaces, boat house, central air, very private.
\$299,900 (H-176E) 647-6400

**BLOOMFIELD**

EXCEPTIONAL AND SPACIOUS Contemporary home on wooded 200 ft. deep lot. Features family room, 4 bedrooms, 3 full baths, den and greenhouse.
\$299,900 (M-377E) 647-6400

**BIRMINGHAM**

VINTAGE 1924 HOME across from City Park. Close to town, 4 bedrooms, 2½ baths, dining room, cathedral ceiling, central air and lots of potential.
\$189,900 (R-100E) 647-6400

**BLOOMFIELD HILLS**

MOVE IN CONDITION! 4 bedroom Ranch, 2 bath with lake privileges, country comfort, over 1 acre, treed lot with pond, circle drive.
\$255,000 (B-489E) 641-1050

**BIRMINGHAM**

ATTRACTIVE POPPLETON HOME! Hardwood floors, updated kitchen with breakfast nook, 3 bedrooms, 1½ baths, den and dining room.
\$229,900 (M-831E) 647-6400

**BLOOMFIELD**

CONTEMPORARY Condo in exclusive Community. Great room with vaulted ceiling, fireplace and doorwall to deck. Gourmet kitchen, 3 bedrooms and 2½ baths.
\$239,900 (W-408E) 647-6400

**BEVERLY HILLS**

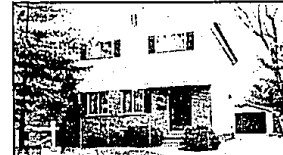
TRADITIONAL COLONIAL in popular Nottingham Forest offers 2,570 sq. ft., 4 bedrooms, 2½ baths, first floor laundry, partially finished rec room and more!
\$237,000 (N-220E) 647-6400

**ORCHARD LAKE**

UPPER STRAITS LAKEFRONT! Spectacular 4000 sq. ft. home on spectacular one acre lot. Wall to wall view of lake, 3 large bedrooms, MUST SEE!
\$1,295,000 (E-501E) 851-4400

**FRANKLIN**

SPACIOUS SPLIT-LEVEL with walk-out to inground pool. Lot overlooks pond, 4 bedrooms, huge family room, 3 fireplaces 12 ft. bay window in living room.
\$300,000 (P-303E) 647-6400

**BIRMINGHAM**

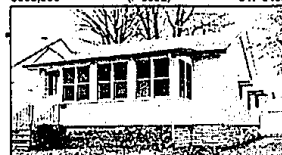
WALK TO TOWN from this charming 4 bedroom, 1½ bath Colonial with dining room, central air, freshly painted, newer carpeting and immediate occupancy.
\$99,800 (R-125E) 647-6400

**WEST BLOOMFIELD**

GREEN LAKE LAKEFRONT! Contemporary rebuilt in 1987. Quality workmanship throughout, 4 bedrooms, 4 baths, custom kitchen, Southern exposure.
\$460,000 (A-637E) 851-4400

**BEVERLY HILLS**

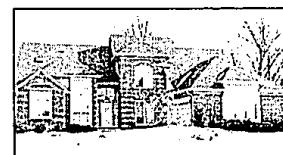
BEAUTIFULLY UPDATED BUNGALOW with lots of charm offers 3 bedrooms, 2 full baths, living room with fireplace, super master suite, 2 car garage.
\$142,500 (B-163E) 647-6400

**BIRMINGHAM**

EXCELLENT LOCATION AND CONDITION! Refinished hardwood floors, new paint, wallpaper, blinds, water heater, garage roof and all ceramic bath. Appliances, fenced yard.
\$89,900 (H-154E) 647-6400

**HUNTINGTON WOODS**

BEAUTIFUL CUSTOM BUILT 4 bedroom, 2½ bath Quad-Level. Newer kitchen, 2 fireplaces, custom built-ins, wet bar in family room. Fabulous yard!
\$272,000 (H-261E) 847-2000

**TROY**

OUTSTANDING 4 bedroom, 3½ bath Colonial. First floor master bedroom backing to wooded setting on over 1 acre. Amenities too numerous to mention!
\$339,900 (W-439E) 641-1660

**TROY**

BRAND NEW CONSTRUCTION with quality throughout. High efficiency furnace, central air, hardwood floors, Andersen windows.
\$185,900 (L-446E) 641-1660

**OAKLAND TOWNSHIP**

PRIVATE 11.5 acre setting with pond, A-1 condition spacious Ranch with 4 bedrooms, 3½ baths, 2 fireplaces finished walkout. Minutes from Rochester.
\$299,000 (S-199E) 641-1660

**TROY**

VALUE PLUS! Northfield Hills, "St. Moritz" Condo offers 3 bedrooms, 1½ baths, updated kitchen in '92. No-wax floors and all appliances are included!
\$93,000 (B-509E) 647-6400

**WEST BLOOMFIELD**

SHARP CONTEMPORARY RANCH with complete privacy. Quality, designer decor will excite you from room to room! Three fireplaces, 3 baths, 2 wet bars.
\$269,000 (L-260E) 851-4400

**WEST BLOOMFIELD**

GRAND 5 bedroom, 4½ bath pillared Colonial. Neutral decor, almond formica kitchen, large breakfast nook. Great family home backing to golf course.
\$255,000 (P-545E) 851-4400

**TROY**

SPACIOUS 4 bedroom Tudor in great location. Library, dining room, large foyer with winding staircase, brick fireplace in family room. Extra large lot.
\$222,900 (C-207E) 851-4400

**LAKE ORION**

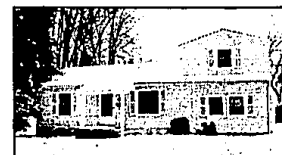
1991 CONSTRUCTION is better than new. Fabulous gourmet kitchen, luxurious master suite, wooded cul-de-sac location! Convenient to Chrysler Tech.
\$199,600 (HC-303E) 641-1660

**OPEN SUNDAY 1-4**

26403 Pleasant Valley South of 12 Mile, East of Drake

FARMINGTON HILLS

BEAUTIFUL CONTEMPORARY 3 bedroom Ranch on ½ acre lot. Large eat-in kitchen, dining room with bay window, finished rec room, cedar deck.
\$100,000 (P-254E) 851-4400

**SOUTHFIELD**

BIRMINGHAM SCHOOLS! 4 bedrooms, 2 baths, large kitchen with all appliances, fireplace, excellent updates, 2 car garage.
\$98,500 (M-305E) 641-1660

**SOUTHFIELD**

IMPRESSIVE sprawling 3 bedroom Ranch on large private treed lot. Very open floor plan, bright kitchen with ceramic tile, 2 full baths, attached garage.
\$99,500 (P251E) 851-4400

**BERKLEY**

VERY SHARP 3 bedroom Bungalow on freshly landscaped lot. Updated kitchen with ceramic tile floor, never carpet, 1½ baths, partially finished basement.
\$82,900 (O-121E) 851-4400

Counsel with

CHAMBERLAIN...

for today's best marketing strategies to sell your home promptly and for complete buyer follow-through!

ROYAL OAK
547-2000

CLYDE
739-1300

WARREN
755-5070

TROY ROCHESTER
641-1660

BIRMINGHAM
647-6400

WEST BLOOMFIELD
851-4400

BLOOMFIELD
540-6777