



Chamberlain REALTORS®

People Helping People Since 1948



BLOOMFIELD HILLS
CUSTOM BUILT! Quaky Plus! 4 bedrooms, 2 full and 2 half baths, 2nd floor laundry, finished room in basement, great executive home. Home Warranty. \$399,900 (BW755-E) 641-1600



BIRMINGHAM
CHARMING updated Colonial with formal living & dining room. Newer kitchen and baths. Nice location for walking into downtown Birmingham. \$197,900 (F-501E) 647-6400



BIRMINGHAM
MILL POND AREA! Updated spacious home. Unique Condo alternative, fireplaces in living & family room. Hardwood floors in living room, kitchen and bedrooms. \$234,900 (V-492E) 647-6400



BLOOMFIELD HILLS
OPEN SUNDAY 1-4
STUNNING Contemporary Quad-Level on Kern Lake. Marble great room, dining room, kitchen and breakfast area. Indoor pool. One acre setting. \$389,000 (L-671E) 851-4400



BLOOMFIELD
BEAUTIFULLY REDONE Fernwood model features bright kitchen with white newer cabinets, large new brick courtyard, finished basement with lots of storage and a large deck. \$189,000 (T-110E) 647-6400



ORCHARD LAKE
UPPER STRAITS LAKEFRONT! Sensational 4000 square foot home on spectacular one acre setting. Wall to wall views. 3 large bedrooms, extensive decking. \$1,295,000 (E-501E) 851-4400



BIRMINGHAM
NEW CONSTRUCTION! Contemporary floor plan with great room, 2 1/2 baths, master suite, full basement, lots of closets, 1st floor laundry and 2 car attached garage! \$174,900 (S-129E) 647-6400



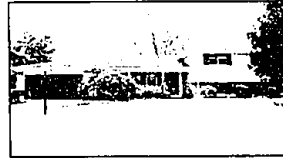
BLOOMFIELD
TENNIS COURT & POOL! This 4 bedroom, 3 bath Quad on gorgeous private wooded lot has it all. Features 3 fireplaces, central air, library and 2 car garage. \$289,900 (N-118E) 647-6400



ORCHARD LAKE
SPECTACULAR 5 level Contemporary - Approximately 4,062 sq. ft., 2,000 additional sq. ft. in the 2 lower levels. Exercise & Hobby Rooms, 136 windows to enjoy. \$749,900 (OT-450E) 641-1660



BIRMINGHAM
VINTAGE 1924 home across from City Park and close to town. Offers 4 bedrooms, 2 1/2 baths, dining room, central air and lots of potential. \$179,900 (R-109E) 647-6400



BLOOMFIELD
SPACIOUS split-level offers 4 bedrooms, 2 1/2 baths, large family room and a separate den or office. There are 2 fireplaces and a formal dining room for entertaining. \$159,900 (B-275E) 647-6400



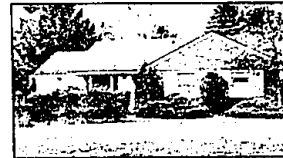
BLOOMFIELD
CONTEMPORARY Condo in nice complex features 2 story great room, fireplace, library, spacious master suite plus 2 additional bedrooms, gourmet kitchen and basement. \$237,400 (W-408E) 647-6400



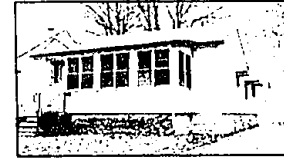
BLOOMFIELD HILLS
GOURMET kitchen highlights this beautifully maintained 4 bedroom, 2 1/2 bath home. Refreshed hardwood floors, updated - swim club available. \$194,900 (W716-E) 641-1660



BIRMINGHAM
MOVE RIGHT INTO this perfectly maintained home with 16x12 screened & stormed porch, master suite with walk-in closets & 12x9 sitting room. \$148,900 (S-165E) 647-6400



BLOOMFIELD
LOVELY 4 bedroom, 2 bath brick ranch with large family room, fireplace, master suite, organic herb gardens, private deep lot and much more! \$127,000 (B-230E) 647-6400



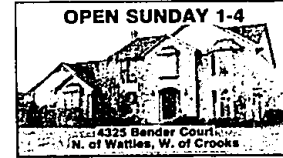
BIRMINGHAM
GREAT CONDITION! Refreshed hardwood floors, newer paint & wallpaper, blinds and water heater. All ceramic bath, appliances included and fenced yard. \$89,900 (H-154E) 647-6400



BEVERLY HILLS
SPACIOUS, traditional Colonial in Nottingham Forest offers many special features. Paned study, 1st floor laundry, finished basement, central air on 2nd floor. \$234,900 (A-222E) 647-6400



KEEGO HARBOR
CANAL FRONT home with all sports Sylvan Lake privileges! Offers open floor plan, 2nd floor laundry, some hardwood floors and West Bloomfield Schools. \$284,500 (R-177E) 647-6400



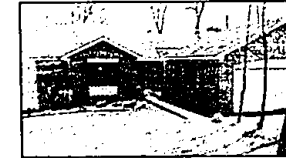
TROY
SPACIOUS 4 bedroom Tudor with 2 1/2 baths, study, large family room, great family room w/ sliding doors to fabulous custom deck overlooking double lot. \$289,900 (B-432E) 647-2000



TROY
QUALITY CONSTRUCTION in builders own newer home. Andersen windows, fireplaces in family room & living room, finished basement, second floor laundry, wood deck. \$209,900 (W529-E) 641-1660



WEST BLOOMFIELD
GREEN LAKE LAKEFRONT! Magnificent rebuilt Contemporary with quality selected thru-out. Ceramic floor, recessed lighting, etc. \$459,000 (A-671E) 851-4400



WEST BLOOMFIELD
GREEN PORTE! Sensationally decorated Master Ranch. Breathtaking "tree top" view of woods, 3 bedrooms, 3 full baths, finished walk-out lower level. \$199,900 (W-711E) 851-4400



WEST BLOOMFIELD
WEST BLOOMFIELD LAKE LAKEFRONT! Regency elegant center entrance 4 bedroom Colonial. Oak flooring, library, winding stairway, finished basement. \$379,990 (L-612E) 851-4400



FARMINGTON HILLS
TERRIFIC Contemporary on beautifully landscaped lot. Huge custom kitchen, 4 large bedrooms, knotty pine family room with fireplace. \$290,000 (L322-E) 851-4400



AUBURN HILLS
GREAT 2 or 3 bedroom, 3 bath condominium, huge bedrooms, living room with fireplace, formal dining room. \$119,900 (WC-271E) 641-1660



FARMINGTON
WALK TO HISTORIC DOWNTOWN! Nice 4 bedroom Colonial on level oversized lot. Family room with downwell leading to spacious deck. Oversized garage. \$134,900 (P-225E) 861-4400



SOUTHFIELD
NEW CONSTRUCTION! 6200 sq. ft., 4 bedrooms, 2 1/2 baths, large living room, kitchen pantry, wonderful space for entertaining, attached garage. \$127,900 (F-190E) 851-4400



WASHINGTON TWP.
LOCATION! LOCATION! Right on edge of New Orchards Golf Course (rated in top ten). Spectacular rooms, RV parking, minutes from Stoner Creek. \$184,900 (W651-E) 641-1660

"Professionals in Real Estate Who Subscribe To A Strict Code of Ethics"

BIRMINGHAM 647-6400

BLOOMFIELD 510-6777

ROYAL OAK 547-2000

TROY/ROCHESTER 641-1660

UTICA 739-1300

WARREN 755-5070

WEST BLOOMFIELD 851-4400