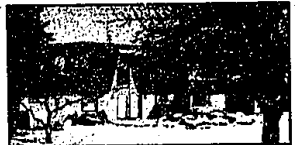




**BLOOMFIELD HILLS PRIVACY.** 2.2 wooded acres behind Bloomfield Hills Country Club. Authentic mission style home custom built in 1978. Soaring ceilings. Master suite in 1991 with his and hers bath. Ultimate privacy. \$1,940,000 (ED-B-40VAL) 422-6922 Call 644-6700



**ORCHARD LAKEFRONT PROPERTY.** Enjoy a world class lifestyle surrounded by homes worth up to \$5 million. A like tender living care could make this a fabulous investment. \$350,000 (ED-H-85WAL) 457980 Call 646-1400



**ORCHARD LAKEFRONT ESTATE HOME** features seven bedrooms, eight full baths and four half baths. A magnificent new home designed for family living. Showplace kitchen. Lakeside master suite. \$4,190,000 (ED-H-61WES) 438941 Call 646-1400



**CITY OF BLOOMFIELD HILLS.** Striking home features a luxurious first floor master suite, 3 additional bedrooms, 4 1/2 baths, office, updated kitchen and family room. Close to Cranbrook schools. \$780,000 (ED-H-90FAL) 481735 Call 646-1400



**SOARING CONTEMPORARY ON CANAL** of Gilbert Lake. Seclusion abounds with gated entrance, pool and tennis court. Breathtaking! 4 bedrooms and 4 1/2 baths. Rebuilt in 1990. Two kitchens and family rooms. \$899,000 (ED-H-20WOO) 458026 Call 646-1400



**DOWNTOWN BIRMINGHAM.** Bostonian colonial. Exquisite moldings, hardwood floors, marble, magnificent 10 foot ceilings. Masterpiece of design and quality. Four bedrooms. Gourmet center island kitchen. \$649,000 (ED-B-25PUR) 600731 Call 644-6700



**NEW CONSTRUCTION** on half acre lot with views of wooded area. Contemporary design with elevated ceilings in great room. Main floor office suite, first floor master suite. Three bedrooms upper level with private baths. \$328,700 (ED-W-90COL) 454921 Call 626-4000



**GRACIOUS AND CHARMING.** One of Bloomfield Village's finest. Spacious open floor plan, 5 bedrooms, 4 full and 2 half baths, family room, library, 4 fireplaces, 3 car garage and many updates. \$839,000 (ED-H-92YAR) Call 646-1400



**BETTER THAN NEW!** Popular Abbingdon model, 4 bedroom, 2 1/2 bath, tudor colonial occupied less than a year. Owners added lawn and landscaping, sprinklers, air conditioning and window treatments. Hardwood floors, library. \$319,000 (ED-H-53HIC) 508446 Call 646-1400



**SUNROOM OVERLOOKING GARDENS.** Fabulous kitchen with cathedral ceiling breakfast room. Library, 18x17 ft. master bath suite, 4 bedrooms, 3 1/2 baths. Quality and neutral full finished basement. \$254,900 (ED-R-82TAN) Call 656-6500



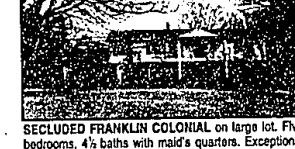
**WEST BLOOMFIELD.** 280 feet of lakefront! Well wooded, walk-out site on cut-de-sac with Bloomfield Hills schools. Beautiful quiet lake. Great fishing! Area of fine homes adjoining North Wabebek. \$374,900 (ED-H-00SHO) 427231 Call 646-1400



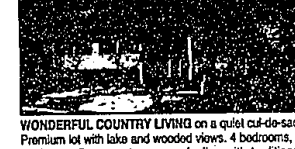
**CHANCE OF A LIFETIME!** Gorgeous contemporary has over 1.5 private wooded acres with stream. 4 bedrooms, 4 baths, library, family room and game room in lower level walk-out. Many updates. \$449,900 (ED-H-48LON) 508405 Call 646-1400



**COPPER CREEK.** Beautiful, 4 bedroom, oak flooring, 2 fireplaces, zoned heating and cooling, treed lot, library, living room, family room. Central vacuum and alarm. \$389,900 (ED-W-55COP) 503523 Call 626-4000



**SECLUDED FRANKLIN COLONIAL** on large lot. Five bedrooms, 4 1/2 baths with maid's quarters. Exceptional closet space. Hardwood floors. Brick patio. Newer furnaces, sprinkler and security systems. \$519,000 (ED-B-00DEV) 507875 Call 644-6700



**WONDERFUL COUNTRY LIVING** on a quiet cut-de-sac. Premium lot with lake and wooded views. 4 bedrooms, 3 full baths. Open contemporary feeling with traditional charm. Walled Lake schools. \$171,500 (ED-W-91GRA) 507462 Call 626-4000



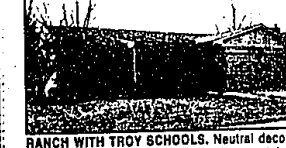
**NATURAL WOODED SETTING** off your deck! Spacious, 4 bedroom, 3 full and 2 half bath colonial. Family room with vaulted ceiling and fireplace. Finished walk-out lower level with second kitchen. \$545,000 (ED-H-33WOO) 441389 Call 646-1400



**DESIRABLE FOXCRIFT RANCH.** Daring ranch with basement on spectacular lot! Three bedrooms, 1 1/2 baths, family room, large laundry room and sun porch. Charm plus move-in condition. \$249,900 (ED-B-65SHA) 508872 Call 644-6700



**WALK TO TOWN.** Charming Dutch colonial on one of Birmingham's best streets. Pewabic tile, large bright rooms. Two room master suite with bath and walk-in closet. Large home with great potential. \$399,000 (ED-B-48HAW) 507349 Call 644-6700



**RANCH WITH TROY SCHOOLS.** Neutral decor, 3 bedrooms, 1 1/2 baths, first floor laundry, basement. Large open kitchen with dining area that opens to family room with cathedral ceiling and fireplace. \$127,900 (ED-B-26AVA) 507287 Call 644-6700



**PRIVATE FREE-STANDING UNIT.** Master bedroom with soaring ceiling. Bath with hot tub. Guest suite on second floor with vaulted ceiling and full bath. SubZero, Thermador range and Grobe fixtures. Deck. \$198,900 (ED-B-91DAW) 507468 Call 644-6700



**SPORTS LAKE PRIVILEGES.** Extensively renovated, 4 bedroom ranch. New white kitchen, spacious master suite, updated ceramic baths. 3 car garage. Private wooded lot. \$197,000 (ED-B-15MOC) 507416 Call 644-6700



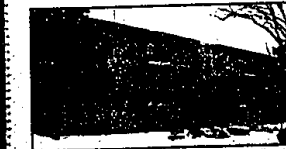
**CAR BUFF'S DREAM.** Four car attached garage, security system, well maintained ranch with finished basement. Large master suite, spacious floor plan. \$127,500 (ED-W-09DEC) 504180 Call 626-4000



**CHARMING, LIVONIA,** three bedroom bungalow on triple lot. Fireplace. Two car garage. Newer roof. FHA/VA terms. Priced to sell. \$62,900 (ED-W-25FAR) 507858 Call 626-4000



**WALNUT LAKE PRIVILEGES.** Cozy bungalow. Cherry and brick fireplace add charm to the living room. Dining room has bay window. Wrap-around deck has hot tub. Two car garage. \$121,500 (ED-W-80INK) 448681 Call 626-4000



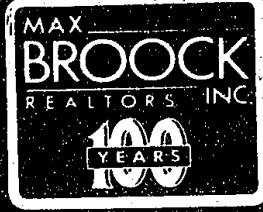
**CUSTOM CONTEMPORARY CONDO.** Designer special. Ceramic tile entry, new carpet. Two bedrooms, two baths, new kitchen appliances. Southem exposure. Shows like a model. \$69,000 (ED-B-42TWE) 508082 Call 644-1900



**BINGHAM WOODS.** Private setting. All neutral decor. Three fireplaces, 2 full and 2 half baths, finished basement. Decking offers seclusion. Brick paved atrium. \$239,900 (ED-W-15TRA) 504362 Call 626-4000



**LOCATION, LOCATION, LOCATION.** Sharp townhouse with spacious, 2-story great room, formal dining, updated kitchen with eating space, first floor laundry, 2 bedrooms, 1 1/2 baths. All appliances stay. \$85,900 (ED-W-50TEL) 502262 Call 626-4000



Orchard Lake Road 573 Westbury Town Home  
(810) 628-4000  
Rochester Hills (810) 647-2200  
1-800-368-2130

**LOOKING BACK . . .**  
**Did You Know?**



Robin Hood's Barn, in Bloomfield Hills, is where the Village Club now resides. In 1929 the barn was renovated and additions added at a cost of \$120,000. Paul Honore, the illustrious painter, did six murals, that

decorate the walls, depicting in rich color and bold figures, scenes from Robin Hood. Thus the estate received its name. Max Brook, Inc., has been involved in the marketing of which sold in 1961 at \$130,000.



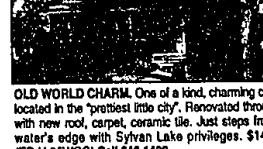
**BLOOMFIELD VILLAGE.** Great street appeal. Brick center entrance colonial. Updated kitchen, breakfast room with built-ins, library, year round heated porch, finished basement. 4 bedrooms, 2 full and 2 half baths. \$449,000 (ED-B-20YAR) 504601 Call 644-6700



**QUAINT OXFORD.** Spacious, brick home welcomes you. Situated in Davis Lake Highlands. Large, well landscaped lot with blue spruce, fruit trees and raspberry patch. Fireplace in family room. 3 bedrooms, 1 1/2 baths. \$129,900 (ED-W-02IND) 506016 Call 626-4000



**CRESCENT LAKE PRIVILEGES!** Charming Tudor has it all. Three bedrooms, 1 1/2 baths, basement, garage, fenced yard and so much more. Priced right to sell quickly. \$34,900 (ED-W-85LCC) 506379 Call 626-4000



**OLD WORLD CHARM.** One of a kind, charming colonial located in the "prettiest little city". Renovated throughout with new roof, carpet, ceramic tile. Just steps from the water's edge with Sytvan Lake privileges. \$149,900 (ED-H-95WOC) Call 646-1400



**WOW! FOUR BEDROOMS.** Downtown Rochester ranch, bright and airy, fireplace in living room, full basement and two car attached garage. Don't miss it! \$114,900 (ED-R-28HEI) Call 656-6500