

Quality homes in:
Birmingham • Bloomfield Hills
Rochester • Farmington Hills
Troy • West Bloomfield



RE/MAX IN THE HILLS

1400 WOODWARD AVENUE BLOOMFIELD HILLS

OAKLAND COUNTY'S LARGEST
RE/MAX REALTOR

Relocation Specialists

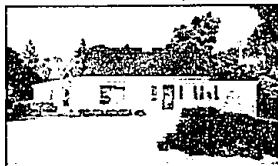
646-5000

Member ALL Area MLS Services

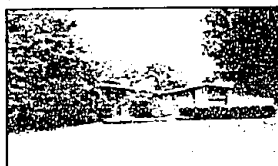


Each office independently owned and operated

**BOB
HOLCOMB**
646-5000
704-2995



IN TOWN BIRMINGHAM
Condo, master on 1st floor, great room with fireplace. Custom cabinets in kitchen. Two bedrooms on the upper level with connecting bath. Large wood deck in private yard. Attached garage. Seconds to downtown Birmingham. \$265,000.

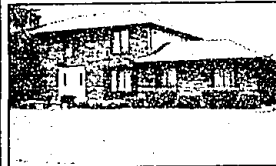


BLOOMFIELD HILLS SCHOOLS
Four bedrooms, 2 1/2 baths. Cathedral ceiling & fireplace in living room. Large dining room. Family room with fireplace & wet bar. Light, bright, neutral kitchen. Tired backyard with paver brick patio. Immaculate. \$267,900.

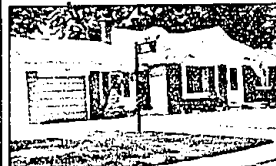


A RARE FIND
Contemporary ranch with a walk-out lower level. This well maintained gem sits at the end of a very private cul-de-sac & on a treed lot. This home also features a spacious kitchen, three bedrooms, three baths & a large wood deck. \$149,900.

**AL
VAN ACKER**
646-5000
EXT. 238



ON THE COMMONS
Great view from 2 level deck. 4 bedrooms, 2 1/2 baths, huge family room - 23x15, library, formal dining room, 1st floor laundry, central air conditioning, great condition. Won't last. \$238,900. Call AL VAN ACKER 646-5000, ext. 238



DOWNTOWN FARMINGTON - FLORAL PARK
Nearly 100% remodeled, sharp 3 bedroom brick ranch, 2 full baths, new kitchen, air conditioning, furnace, roof, windows, deck. Superb Larkshire Elementary. \$107,900. Call AL VAN ACKER 646-5000, ext. 238

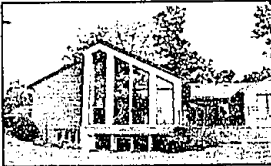


DOWNTOWN FARMINGTON
Registered Colonial in excellent condition. 1870 Victorian with 3 or 4 bedrooms, 1 1/2 baths, family room, basement and carriage style garage with lift. Hardwood floors. Hurry! \$164,900. Call AL VAN ACKER 646-5000, ext. 238

**BEVERLY
CLEMO**
646-HOME
258-2492 (pager)



LOWER LONG LAKE
4 bedroom soft contemporary on private estate lot. Open floor plan with 26 ft. vaulted ceilings, floating gourmet kitchen, walk-out lower level with "Tom suite." \$375,000. Call BEVERLY CLEMO 646-HOME or 258-2492



OAKLAND HILLS COUNTRY CLUB
Totally remodeled and expanded. 3500 sq. ft., 4 bedrooms with vaulted ceiling family room, gourmet kitchen, walk-out lower level with "Tom suite." \$409,900. Call BEVERLY CLEMO 646-HOME or 258-2492



CITY OF BLOOMFIELD HILLS
Great opportunity to live in the City. Tremendous potential for purchaser willing to decorate this 4 bedroom walk-out ranch. \$449,000. Call BEVERLY CLEMO 646-HOME or 258-2492

**RUSS
MESSINA**
646-5000
EXT. 282
PAGER: 406-9205



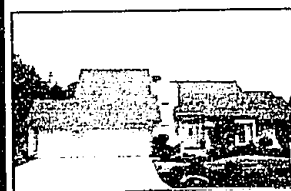
GREEN LAKE - 150 FT. FRONTAGE
West Bloomfield. Completely updated. 4 bedrooms, 4 1/2 baths. Over 3100 sq. ft. plus finished lower level with 2nd kitchen, 3 car garage, apartment. Wonderful views. \$559,000. (512)140 CALL RUSS MESSINA.



LOON LAKEFRONT CONDO - WATERFORD'S ISLAND COVE
Boat slip. Pool. 2 bedrooms, 2 baths. Over 1700 sq. ft. Built '90. Underground parking, elevator. Contemporary neutral. Views, balcony. All appliances. \$144,000. (509)514 CALL RUSS MESSINA



BIRMINGHAM'S BEST PRICE - AND VALUE!
One bedroom. New carpet & window treatments. Doorwall. Clean. Maple & Coedige. \$39,900. CALL RUSS MESSINA 646-5000, ext. 282; or Pager 420-9205.



FARMINGTON HILLS - FABULOUS HOME!
Enclave 1st floor master suite has a bath you won't want to leave. Walk-out basement finished to perfection, 2 kitchens, sauna, hot tub, gorgeous lot. 3 car garage. \$425,000. Call ANDY COLLINS 646-5000, ext. 242



WEST BLOOMFIELD
Long Lake Estates sub with Bloomfield Hills School! Immaculate 4 bedroom contemporary, finished basement, gorgeous inside and out. Move in, in time for school! \$339,900. Call ANDY COLLINS 646-5000, ext. 242



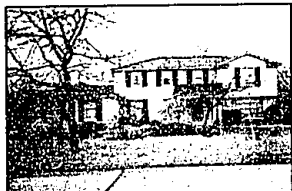
COUNTRY CLUB MANOR - GREAT BUY!
Over 1,200 sq. ft. in this city upper level condo. This 2 bedroom, master bedroom, 16x13, 2 baths, eat-in kitchen has wonderful closet space and a balcony overlooking pool. \$89,250. Call DEE ALAIMO 646-5000, ext. 289



BLOOMFIELD HILLS CONDO
Priced to sell - this 2nd floor ranch condo offers over 1800 sq. ft., living room and den, 2 full baths, 2 bedrooms, appliances, 2 car garage. \$149,900. Ask for JOAN DOWNING 646-5000, ext. 224



BLOOMFIELD HILLS SCHOOLS
And a great price come with this charmer! 3 bedrooms, 1 1/2 baths, living room, family room with fireplace, basement, air, garage, some wood floors, and more! WOW! Only \$139,900. Call ANDY COLLINS 646-5000 ext. 242



SPECIAL FOR YOUR FAMILY
Wonderful colonial with Bloomfield Hills schools. Circular stairway, private library, cathedral ceiling in master bedroom. Fieldstone fireplace in family room. In-ground pool. \$339,900. Call DEE ALAIMO 646-5000, ext. 289



BEAUTIFUL ADAMS WOODS CONDO
Totally updated and private with large deck overlooking wooded area. 3 bedrooms, 2 1/2 baths, 2 fireplaces. \$204,900. Ask for CARL or MARLENE STELLIN 646-5000, ext. 240



VINSETTA AREA COLONIAL
Move right in to this fresh decor, new kitchen with G.E. appliances, new roof, furnace and central air. 3 bedrooms with family room, hardwood floors. \$153,500. Call CARL or MARLENE STELLIN 646-5000, ext. 240



WEST BLOOMFIELD CONDO
This detached townhouse is fabulous. 2 bedrooms, 2 1/2 baths - \$26,000 in upgrades, white/black/grey contemporary decor. Backs to woods with deck & spa. You must see to believe! \$224,000. Call ANDY COLLINS 646-5000



BEVERLY HILLS COLONIAL
Spacious 4 bedroom, 2 1/2 bath home features marble entry, extensive ceramic tile, hardwood floors, Andersen & Pella windows & doors. The 15x13 family room with skylights opens to a totally new kitchen. 2 decks & park-like yard. Birmingham schools. \$239,900. Call FORREST REED 646-5000, ext. 228



BYLVAN GLEN TUDOR
Great family home with 4 bedrooms, 2 1/2 baths, formal dining room, family room with fireplace, wet bar, oak cabinets, 1st floor laundry. New Euro style kitchen, library with built-ins. \$184,900. Call JOE BROWN 646-5000. Call RE/MAX in the Hills. 646-5000 (12HIER)



ROCHESTER'S THORNRIIDGE SUBDIVISION
1st floor master bedroom, great room, white island kitchen, library, dining room, 4 bedrooms up - 4th bedroom is loft overlooking great room. Balcony hallway overlooks foyer and great room. Immediate possession. \$270,500. Ask for JIM LEAHY 646-5000, ext. 228