

RED CARPET KEIM
REAL ESTATE

Each office independently owned and operated

Associates, Inc.
855-9100

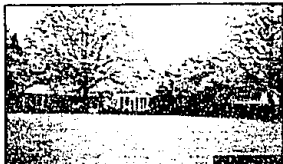
Birmingham, Inc.
645-5800

Concierge
879-7000

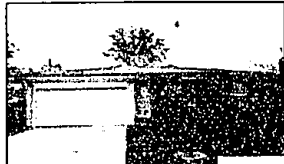
Exclusive
464-0200

Midwest, Inc.
477-0880

Walker & Assoc.
354-1500



CITY OF BLOOMFIELD HILLS WALK TO GREENBROOK. Custom built Serrano kitchen is only one of the many features. This charming colonial ranch includes: master suite, 4 bedrooms, 3 baths, 2 fireplaces. \$139,000. 464-5600. MARKETED BY JOANNE BUTTS



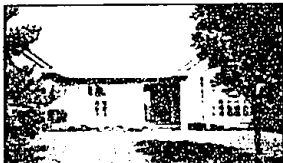
SEE FOR YOURSELF. Bring your decorating ideas. Large eat in kitchen including built in hutch. Great eat bar, breakfast living room and family room with fireplace. Full finished basement for \$179,000. 477-0880. MARKETED BY CATHY REID



CANAL FRONT TO S. COMMERCE. The brick colonial with 2 1/2 baths, large open living room & family room with natural fireplace plus full basement and 2 car attached garage situated on large canal leading to all sports S. Commerce Lake. A steal at \$187,900. (DU) 655-9100. MARKETED BY JIM BOURDEAU



CONTEMPORARY RANCH CONDO! Wooded privacy surrounds this lovely detached unit with 3 bedrooms, 2 baths, and finished lower level that's great for entertaining. Neutral decor, and priced at \$109,900. (DU) (313) 464-0200. MARKETED BY CAROL JENSEN



BLOOMFIELD HILLS CONDO. Custom built ranch. Spacious and comfortable. Great room with central heating, fireplace and private deck off dining room. Full bath, master suite, finished basement with 2 bedrooms & full bath. Priced at \$329,000. 645-5600. MARKETED BY SUSAN KEIM



PRIME SUBURBAN LIVING could be yours in the fabulous 4 bedroom, 2 bath colonial. Basement completed with rec area, kitchen, bedroom and bath. Enjoy the lovely view westward from circle drive off family room. \$279,900. 313) 974-7000. MARKETED BY CATHY REID



RICHLY FINISHED CONDO. Totally updated with ceramic floor, 4 on kitchen. This condo has lots of closet space, a laundry room and master bath. Great West Bloomfield location. \$79,900. (DU) 655-9100. MARKETED BY JACKIE ERLANDSON



ALL SPORTS LAKEFRONT Build the home you've been dreaming of on the all sports lakefront double lot. Existing ranch cottage has newer deck, Florida room, and spectacular views of the water. (DU) (313) 464-0200. MARKETED BY BOHVE CHERIUM



LOCATION, LOCATION, LOCATION! This beautiful 4 bedroom, 2 bath brick Colonial. Acreage 2,300 sq. ft. Home has dual core ceilings, wet bar, newer kitchen and floor. Located in yard with deck and more ground. A steal at \$219,900. 645-5600. MARKETED BY TERPI KING



CITY OF FARMINGTON. Beautifully landscaped lot and the street front supports this ranch. 3 bedrooms, 2 full baths, stone fireplace and attached garage. Near downtown Farmington. \$179,900. 477-0880. MARKETED BY BOHVE HAYMAKER. SCOTT CAMPBELL



BIRMINGHAM SCHOOLS! Desirable Westchester village location for this 2,500 sq. ft. home with 4 bedrooms, large separate living room & family room, formal dining room situated on a large private lot. Immediate possession and priced to sell at \$199,000. (DU) 655-9100. MARKETED BY STEVE WENDT



ROSEDALE FINEST. 3 bedroom 2 1/2 bath, french doors fireplace, formal dining room, finished basement, 2 car garage. \$119,000. 354-1500. MARKETED BY ALPHONSO GRIFFIN



FABULOUS. Two bedroom, 2 bath condo. Spacious rooms, large master with walk-in closet, fireplace, porch, 2 car attached garage. Call, post, terms and brochure. Only \$179,900. 645-5600. MARKETED BY BOB KEELER



Just Listed! MOVE! Spacious 4 bedroom home offers a bright, open floor plan, formal living and dining rooms, family room, 3 fireplaces, updated kitchen and great location in popular Lutz. Newly listed at \$148,000. 477-0880. MARKETED BY DIANE WIKLEMAN



NEW CONSTRUCTION! A 2,800 sq. ft. New England style colonial set upon a beautifully wooded half acre lot in one of Lutz's most prestigious subdivisions. Fully bricked exterior, 4 bedrooms, 2 1/2 baths, copper keys. Call for other cost! \$319,900 (DE). MARKETED BY J.B. BOURDEAU



NEW LISTING. Unique 3 bedroom raised ranch. Finished basement, deck overlooking lake, new roof, 2 car garage. Beautifully landscaped. Warranted \$179,000. 354-1500. MARKETED BY JUDY WALKER



BRAND NEW - READY FOR YOU. Enjoy country living in this beautiful Victorian featuring a gorgeous foyer leading to the large great room with marble fireplace. Island kitchen includes breakfast room. Three bedrooms, 2 baths. Reduced to \$149,000. (DU) 878-7000. MARKETED BY STEVE GOTTLEB



LYVORA. Brand new ranch boasts dramatic great room with formal dining, breakfast room, family room, 3 fireplaces, updated kitchen and attached garage in great location! \$149,000. 477-0880. MARKETED BY TOM & CORNIE ISBELL



LAKE ACCESS HOME! This spectacular custom built home can be designed to meet your needs. Included in the package is 3 bedrooms, 2 1/2 baths and a 2 car garage. \$199,000. 477-0880. MARKETED BY HANVY POOLYTS



PRICE REDUCTION! 3 bedroom, 2 1/2 bath. Gracious living room, large living room, open finished basement, 2 car attached garage with covered drive, much, much more. Now \$185,000. 354-1500. MARKETED BY AQUELEAH TAYLOR



THE MANOR HOUSE - DESIGNED FOR YOU. Custom model with 3 bedrooms and 3 full baths, formal dining and great room with marble surround fireplace. Make your choice from the numerous layouts provided for \$142,500. (DU) 878-7000. MARKETED BY STEVE GOTTLEB



Just Listed! MOVE! Large, park like lot surrounds this home in terrific neighborhood with Flori Schools! Boasts 3 bedrooms, family room, attached garage, central air. \$147,900. 477-0880. MARKETED BY TOM & CORNIE ISBELL



HARD TO FIND RANCH with neutral decor, large library, huge attic, Florida room, private yard & great cul-de-sac street. Newer windows and hot water tank. Home warranty included. \$79,900. (DU) (313) 464-0200. MARKETED BY KRYNN OLEH



SHERWOOD VILLAGE. 6 bedrooms, 4 1/2 bath ranch, master bath, stone foyer family room with fireplace. Finished basement with wet bar, central air and more. \$108,000. 354-1500. MARKETED BY ALPHONSO GRIFFIN

