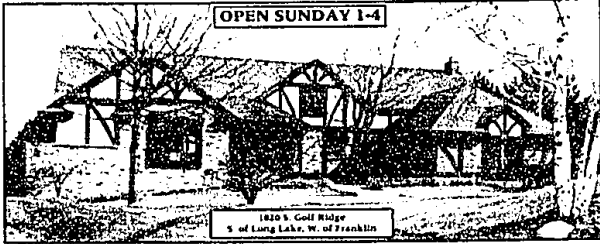


HOMES OF DISTINCTION



ORCHARD LAKE
GRAND COLONIAL SET UPON AN AWESOME PENINSULAR LOT! Waterfront and tear with terrific views. Fantastic fin. room. Newer Pella windows. Seller can finance.
\$299,000 (19-0682) 851-4400



BLOOMFIELD HILLS
GOLFER'S DREAM HOME ON THE 14th FAIRWAY IN SOUTH WABEEK! Spectacular views, 1st floor master, beautiful ceramic, gourmet kitchen, finished walk-out.
\$779,000 (G181E) 851-4400



BLOOMFIELD HILLS
NEWER TUDOR COLONIAL IN CITY OF Bloomfield Hills on private lot offers 4-1 bedrooms, fabulous walk-out in-law suite & much more.
\$499,000 (H551E) 647-6400



MILFORD
SENSATIONAL new construction on 12 wooded acres. First floor master suite, kitchen with hearth room, fireplace and hardwood floors. Walkout lower level with 1,900 sq. ft.
\$319,988 (M341E) 851-4400



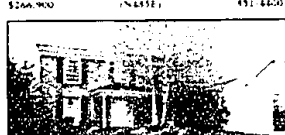
BLOOMFIELD HILLS
SPACIOUS 1st-level on gorgeous private lot with inground pool offers 4 bedrooms, 2 full & 2 half baths, fireplace in master & family room with fireplace.
\$319,900 (K667E) 647-6400



BEVERLY HILLS
CLASSIC plus all the extras - slate floored sun room, ravine setting with backyard copper gutters, full basement and 1st floor laundry.
\$249,925 (19W-9125) 641-1660



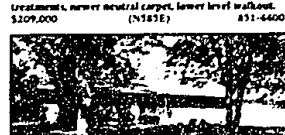
PLYMOUTH
CHOICE Ridgewood Hills Sub. Charming family home with neutral decor, glassed-in sun porch, 4 bedrooms, finished lower level, professional landscaping.
\$266,900 (N435E) 431-4400



TROY
DESIRABLE Marshall Acres Colonial, 4 bedrooms, 2 1/2 baths, spacious family room with natural fireplace, library can be 5th bedroom, 1st floor laundry.
\$219,900 (L414E) 641-1660



WEST BLOOMFIELD
IMMACULATE 4 bedroom Colonial on prime wooded cul-de-sac. Custom island kitchen, custom window treatments, newer neutral carpet, lower level walkout.
\$209,000 (N183E) 851-4400



BLOOMFIELD
ATTRACTIVE brick Ranch in Westchester Village offers 3 bedrooms, library den, eat-in kitchen, neutral decor. Many updates, large lot, 2 car attached garage.
\$149,900 (7212E) 647-6400



ROYAL OAK
PRIVATE entrance to 3 bedrooms, 1 bath 1st floor Condo 2 miles from downtown Birmingham. Freshly painted and decorated with neutral colors.
\$37,000 (7211E) 647-6400

SINCE 1948

Chamberlain

REALTORS®



TROY
SPACIOUS Tudor with double staircases, library, 3 car garage, 4 bedrooms and much more.
\$292,025 (H602E) 641-1660



WEST BLOOMFIELD
ENJOY living in this terrific Colonial! It is set on an estate size lot with privacy and a ravine with stream. The house is updated in every way!
\$273,000 (7719E) 851-4400



BIRMINGHAM
POPLETON PARK home! Spacious first floor, 2 staircases to 2nd floor, walk-up 3rd floor. Beautiful fireplace with built-in bookcases.
\$247,500 (K964E) 647-6400



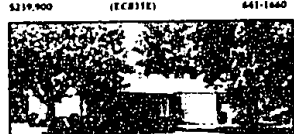
SPRINGFIELD
TRANQUILITY and serenity! 2 1/2 acre site in Springfield Township. Clarkson Schools, 3 bedrooms, 1 1/2 baths, newer Colonial, walkout lower level.
\$319,900 (EC31E) 641-1660



WEST BLOOMFIELD
RANCH CONDO in a prime pond location on cul-de-sac setting. Central location to shopping centers, freeways & medical facilities. Offers 3 bedrooms & 2 baths.
\$219,900 (5742E) 647-6400



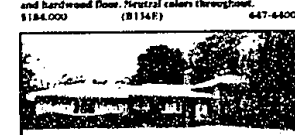
BLOOMFIELD
PERFECT location on large wooded lot offers 4 bedrooms with a touch of class! Hardwood floors with new counters and hardwood floor. Neutral colors throughout.
\$184,000 (B134E) 647-6400



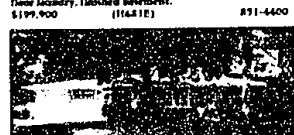
WEST BLOOMFIELD
MOVE RIGHT IN to this 4 bedroom Colonial. Double front door entry, central air, family room with fireplace, 1st floor laundry, finished basement.
\$199,900 (H641E) 851-4400



BLOOMFIELD
ADAMS WOODS CONDO with light airy neutral decor. 3 bedrooms, 2 1/2 baths, some hardwood floors, patios stone courtyard and large deck overlooking woods.
\$174,900 (H414E) 647-6400



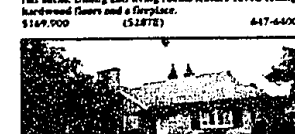
LATHRUP VILLAGE
BEAUTIFUL Grand on large wooded lot offers 4 bedrooms, 1 full bath. Dining and living rooms feature coed ceilings, hardwood floors and a fireplace.
\$149,900 (5287E) 647-6400



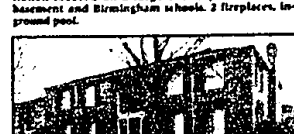
TROY
CHARMING three bedroom, two full bath brick Ranch located on a large country lot with full basement and Birmingham schools. 2 fireplaces, inground pool.
\$199,900 (7665E) 647-6400



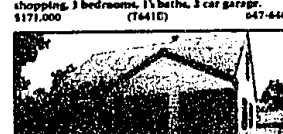
BLOOMFIELD HILLS
WING LAKE PRIVILEGES. Ranch with family room and library. Great location, convenient to shopping, 3 bedrooms, 1 1/2 baths, 2 car garage.
\$171,000 (T641E) 647-6400



LATHRUP VILLAGE
WELL MAINTAINED custom 3 bedroom Ranch with lovely 3 seasons room and door to patio, partially finished basement, nicely landscaped large lot.
\$124,900 (D184E) 647-6400



BLOOMFIELD
METICULOUSLY MAINTAINED. 1st floor Condo offers all appliances, including stackable washer & dryer, carpet, pool and clubhouse. Bedroom has walk-in closet.
\$16,800 (7665E) 647-6400



ROYAL OAK
BEAUTIFUL 3 bedroom, 1 1/2 bath brick Dunshire, finished basement, central air, 4 car garage, all on a park-like setting.
\$127,900 (D411E) 641-1660