

# Beautiful Skiwear Perfect Anywhere

Bavarian Village Has A Ski Clothing & Outerwear Selection You Just Won't Find Anywhere Else. All The Top Brands And A Tremendous Selection Of Jackets, Shells, Suits, Sweaters, Pants, Bibs, Warm-Ups, Fleece Tops & Bottoms For Men, Women And Children.

B O G N E R



Bogner... For the solo enthusiast or the social skier who wants to make a statement on the slopes. Cold weather enthusiasts will find something practical fun and functional to fit their own personal style.

**NORDICA**



Nordica... Function, fit, and timeless styling for men, women and children. Engineered skiwear to meet the demands of all levels of skiers.

**NILS**



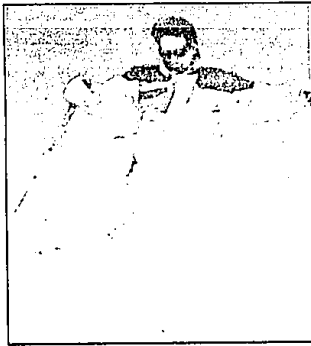
Nils has combined the technical features that work in extreme conditions while maintaining a leadership role in the ski fashion world, offering sophisticated fabrics with their rich colors, accented with detailed trims

**OBERMEYER** 



Obermeyer... Skiwear from the heart of the mountains. Obermeyer shares the excitement of skiing and snowboarding with all age groups from toddler to adult.

**NEVICA**



Neveca... The men's collection combines aggressive and bold designs as well as using high water resistant and ultra breathable shell fabrics designed specifically for alpine skiing.

**THE NORTH FACE** 

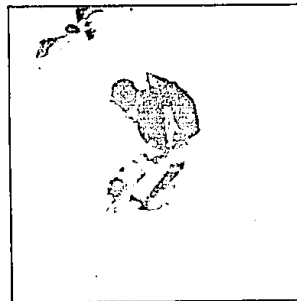


Photo by Chris Noble

North Face Steep Tech... Ingenious technical features that will facilitate your ascent of every vertical wall you ski down.

## A Selection You Just Won't Find Anywhere Else

Nils • Descente • Roffe • Skea • Marker Ltd. • Uggs • Spyder • High Sierra • Kaelin • Woolrich • Nordica  
Skiwear • Couloir • Tyrolia Skiwear • Bogner • Neveca • Hot Chilly • Head • Bula • Belfe • Silvy • Sunbuster  
All the top brands for Men, Women & Kids

# Bavarian Village

## INTERNATIONAL SKI & GOLF

- BLOOMFIELD HILLS... 2540 WOODWARD at Square Lake Rd. .... 810-338-0803
- BIRMINGHAM ..... 101 TOWNSEND corner of Plaza ..... 810-644-5950
- FARMINGTON HILLS ..... 27847 ORCHARD LAKE RD. at 12 Mile ..... 810-553-8385
- MT. CLEMENS ..... 1216 S. GRATIOT 1/2 mile North of 16 Mile Rd ..... 810-463-5620
- DEARBORN HEIGHTS ..... 26312 FORD RD. 1 1/2 miles W. of Telegraph ..... 313-562-5560
- FLINT ..... 4261 MILLER RD. across from Genesis Valley Mall ..... 810-732-5560
- CALL TOLL FREE... We Ship UPS ..... 1-800-442-2929
- NOVI ..... NOVI TOWN CENTER S. OF I-96 on Novi Rd. .... 810-347-3323
- GROSSE POINTE ..... 19455 MACK AVE. just North of Marston ..... 313-885-0300
- ANN ARBOR ..... 3536 WASHTEANAW West of U.S. 23 ..... 313-973-9340
- EAST LANSING ..... 246 E. SAGINAW at Abbott ..... 517-337-9696
- GRAND RAPIDS ..... 2035 28th Street S.E. bet. Breton & Kalamazoo ..... 616-452-1199
- TRAVERSE CITY ..... 107 E. FRONT ST. (BaySide Entrance) ..... 616-941-1999
- SUGAR LOAF Resort ..... 18 Miles N/W of Traverse City ..... 616-228-6700

Open Daily 10-9 • Saturday 10-6 • Sunday 12-5

VISA • MASTERCARD • AMERICAN EXPRESS • DISCOVER • DINERS