

OBITUARIES

WILLIAM P. MARUNICH
Mr. Marunich, 78, of Farmington Hills died Dec. 7.

Mr. Marunich was a former employee of Burroughs Corp. (machine builder) and Centri-Spray Corp. (field service engineer). He was a member of St. John Lutheran Church and a former member of Metro Male Chorus, Plymouth Choralaires.

Survivors include his wife, Margaret; sons, Paul and Thomas; five grandchildren.

MARY GRACE KNICKERBOCKER
Miss Knickerbocker, 88, of Farmington died Dec. 21.

Born in Clio, Michigan, Miss Knickerbocker was a secretary for Detroit Edison Company. She was a member of the Order of the Eastern Star in Clio. She was also a member of Central Woodward Christian Church in Troy.

Survivors include her nephews, Dick Montague, Jeff Montague, Brad, Brian and Jim Parker; nieces, Joan Parker and Nancy Curtis.

Services were Dec. 23 at Central Woodward Christian Church in Troy with the Rev. Dr. Daniel H. Kuhn, Jr. officiating. Burial was Woodlawn Cemetery, Clio.

DON LESLIE DOLAN
Mr. Dolan, 73, of Farmington Hills died Dec. 23 in Angela Hospice.

Born in Fort Wayne, Ind., Mr. Dolan was a supervisor for AT & T. He was a veteran of World War II in Gen. Patton's Third Army.

Survivors include his wife, Josephine; sons, Don Jr. and Steven; daughters, Diane Zabelt and Nancy Giovannini; eight grandchildren.

Services were at the McCabe Funeral Home, Farmington Hills. His body was donated to the U of M Medical School in Ann Arbor. Memorials may be made to Angela Hospice, 14100 Newburgh Road, Livonia 48154-5010.

RICHARD VAHRATIAN
Mr. Vahratian, 61, of Farmington Hills died Dec. 26.

Born in Detroit, Mr. Vahratian was an accountant at Blue Cross Blue Shield of Michigan. He served in the U.S. Army.

Survivors include his wife, Isabelle; daughter, Anjel; sisters, Rosa Hazerjian, Ann Javarjian and Dotty Demerjian; brother, Adam.

Visitation will be Thursday, 6-9 p.m. in St. John's Armenian Church, 22001 Northwestern Highway, Southfield. Funeral services will be Friday at 11 a.m. at St. John's Armenian Church. Burial will be in Woodlawn Cemetery, Detroit.

Family requests memorials to the Richard Vahratian Endowment Fund at St. John's Armenian Church. (Please make checks payable to the church).

Arrangements were made by the Edward Korkorian Funeral Home, Inc., Royal Oak.

CLIFTON C. CAPEN
Mr. Capen of Farmington died Dec. 23 in St. Joseph Mercy Hospital, Pontiac.

Born in Detroit, Mr. Capen was district manager and civil liabilities underwriter for United Life Insurance Company. He retired at age 65 after 40 years.

Mr. Capen enjoyed tennis, golf and bowling and was a member of the Strokes Team.

Survivors include his daughter, Diane Dyla; four grandchildren and eight great-grandchildren.

A memorial service will be held December 30 at 11 a.m. at Holy Name Church, Woodland at Harmon, Birmingham.

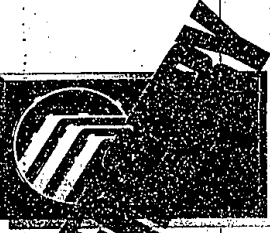
KAREN D. ULSETH
Miss Ulseht, 52, of Farmington Hills died Dec. 22.

Born in Baltimore, Maryland, Miss Ulseht was a school teacher at Green Elementary School in West Bloomfield for 10 years.

Survivors include her mother, Vivian Ulseht of Berkeley; sisters, Kristine Brandstad and Dynet Engle; friend, Rev. Ddr. Sandra Dally of Walled Lake.

Services were December 26 at the Sawyer-Puller Funeral Home, Berkeley, with the Rev. Thomas Barlow of Lutheran Church of the Master in Troy. Burial was in Roseland Park Cemetery, Berkeley.

Memorials may be made to Karen Ulseht Golf Scholarship Fund or the Scotch Elementary School Children's Fund.



YOU MEET DETROIT
LIVE AT MERCURY

- ANN ARBOR**
Apollo
2100 N. Stadium Blvd.
at Liberty
(313) 668-6100
- DEARBORN**
Krug
21331 Michigan Ave.
Between Southfield and Telegraph
(313) 274-8800
- DETROIT**
Bob Maxey
10901 Mack Ave.
At Cadieux
(313) 885-4000
- DETROIT**
Park Motor
18100 Woodward Ave.
Opposite Palmer Park
(313) 860-5000
- FARMINGTON**
Bob Dusseau
31625 Grand River Ave.
1 Block West of Orchard Lake Rd.
(810) 474-3170
- GARDEN CITY**
Stu Evans
37000 Ford Rd.
Just West of Merrillan
(313) 425-4300
- NOVI**
Varsity
49251 Grand River
1-96 1/2 Block S. of Wilcox East
(810) 305-5300
- PLYMOUTH**
Hines Park
40601 Ann Arbor Rd.
at I-275
1-800-350-MERC
- ROCHESTER HILLS**
Crissman
1185 South Rochester Rd.
Between Hamlin and Avon Rd.
(810) 652-4200
- ROSELAND**
Arnold
29000 Grand
At 12 Mile Road
(810) 445-6000
- ROYAL OAK**
Diamond
221 N. Main St.
At 11 Mile Road
(810) 541-6830
- SOUTHFIELD**
Star
24350 W. 12 Mile Rd.
at Telegraph
(810) 354-4900
- SOUTHGATE**
Stu Evans
16800 Fort Street
At Pennsylvania
(313) 285-6800
- STERLING HEIGHTS**
Crest
36200 Van Dyke
At 15 1/2 Mile Road
(810) 939-6000
- TROY**
Bob Borst
1930 West Maple
Troy Motor Mall
(810) 643-6600
- WATERFORD**
Mel Farr
4178 Highland Rd. (M-59)
2 Miles West of Telegraph
(810) 683-9300
- YPSILANTI**
Sesi
950 East Michigan
3 Miles West of I-75
(313) 565-0112

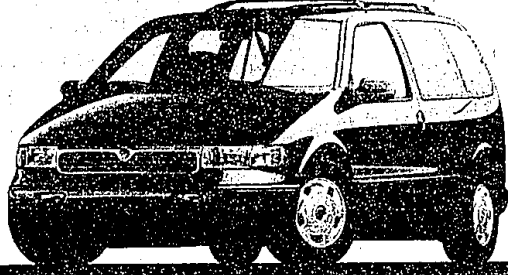
Now, Great Deals On Mercury During The Holiday Bonus. Hurry! Offer Ends Soon!

Standard Features: • 3.0-liter OHC V6 engine • Dual air bags • Multi-point electronic fuel injection • Front-wheel drive • Four-wheel anti-lock brake system • Rack-and-pinion power steering • Rear window washer/wiper • Solar tint glass • Electronic AM/FM stereo cassette • Front cornering lamps • Side window defoggers • Child-proof lock on sliding door • GS Preferred Equipment Package 692A: • CFC-free air conditioner • Power windows/locks • Dual power mirrors • 7-passenger seating • Luggage rack • 8-way power driver's seat • Aluminum wheels • Remote keyless entry

\$299
Per Month, 24-Month Lease

First Month's Payment	\$299
Down Payment (Net of Rebate)	\$1,450
Refundable Security Deposit	\$300
Cash Due at Signing	\$2,649

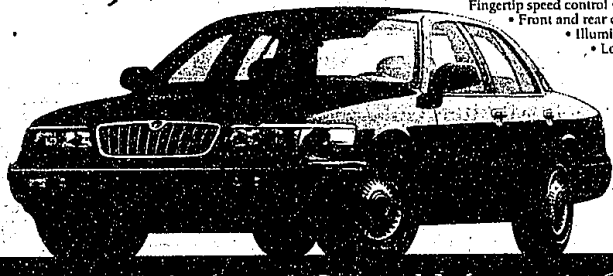
Includes
\$1,000
Lease Cash Rebate



1996 Mercury Villager GS

For About
\$20,603

Standard Features: • 4.6-liter SOHC V8 engine • Dual air bags • 4-speed electronic automatic overdrive transmission • Speed-sensitive power steering • 4-wheel power disc brakes • CFC-free air conditioner • Electronic AM/FM stereo radio with cassette • 6-way power driver's seat • Heated power outside mirrors • GS Preferred Equipment Package 157A: Fingerprint speed control • Power lock group • Front and rear carpeted floor mats • Illuminated entry system • Locking radial spoke wheel covers



1996 Mercury Grand Marquis GS

Standard Features: • Dual air bags • 3.0-liter V-6 engine • Sequential multi-port electronic fuel injection • Tilt steering column • Particulate air filtration system • Solar tint glass • CFC-free air conditioner • Power windows • Dual power heated mirrors • Flip-fold center console • Cross car beam construction • Illuminated entry system • GS Preferred Equipment Package 451A: • Fingerprint speed control • Power lock group • 6-way power driver's seat • Aluminum wheels • Front and rear carpeted floor mats • Light group

\$329
Per Month, 24-Month Lease

First Month's Payment	\$329
Down Payment	\$1,485
Refundable Security Deposit	\$350
Cash Due at Signing	\$2,164

Current Sable Lessees
Save Up To
\$500
In Reward
Bonus Money



1996 Mercury Sable GS

**Holiday
BONUS**

*1996 Mercury Villager GS with 1P2P42A MSRP \$21,399 and 1996 Mercury Sable GS with 1P2P41A MSRP \$20,299 excludes title, tax, license fee. Lease payment based on average anticipated cost of 92¢ per \$1,000 of MSRP. At Villager and 94¢ per \$1,000 of MSRP for Sable for 24-month closed-end lease. Credit review required. Lessee must maintain minimum credit rating of 650. Some programs higher. \$20,603 at \$15/mo. Credit approval/acceptability determined by Ford Credit. Total amount of monthly payments is \$2,176 for Villager and \$2,176 for Sable. For special lease terms see Sable and Villager and \$1,000 Lease Cash Rebate on Villager, take new retail delivery from dealer stock by 1/3/96. **1996 Mercury Grand Marquis GS with 1P2P43A. This is an average of prices based on an independent survey of Metro Detroit Lincoln-Mercury dealers on 11/1/95. Same price higher, same lower. Title, tax and license fee extra. See your dealer for their price. Customers eligible for \$500 Sable RCS, renewal incentive must terminate their lease of a Mercury Sable between 9/12/95 and 1/3/96. A customer's lease terminated early will qualify if it is terminated within the program dates. Customers who have previously terminated their Sable lease from 8/1/95 through 9/27/95 are also eligible if they had Credit Lease a 1996-model Sable within the program period. *Excludes tax and other fees. Always wear your safety belt.

**Wanna
Surf the Net?**

Call 313-953-2038

Four Generations of Service

Dittrich
Since 1829

Detroit Bloomfield Hills
873-8300 642-3000

HOMEOWNERS! STOP
Bring from paycheck to paycheck!

**LOANS
BY PHONE**
SAME DAY APPROVAL!

800-777-7800 • 800-777-7800 • 800-777-7800
AAA MORTGAGE & FINANCIAL CORP.

**Don't Sell
Your Baby!**

It's time for your "baby" to leave home, donate that precious old car, truck or boat to Volunteers of America.

Donating is simple, fast and easy. Gifts qualify as tax deductible contributions for those who itemize. Receipts issued.

Volunteers of America has been serving southeast Michigan's needy since 1887. Funds derived from your vehicle can house a homeless mother and her children in our transitional housing program for at least a month or more.

For more information, call
(810) 373-9000