



**CENTURY 21 TOWN & COUNTRY'S
NEW 21,000 SQ. FT. OFFICE
IN DOWNTOWN BIRMINGHAM**

SANDY NORMAN THE \$10,000,000 MAN

**HIRE A
GREAT AGENT
AND THE
#1 CENTURY 21
FIRM
IN THE WORLD**



ORCHARD LAKE - 3200 sq. ft. traditional 2 story on acre setting with Orchard Lake frontage with dock and deck at waters edge. Four bedroom, 3 1/2 bath, 2 story LR, FR addition and white St. Charles kitchen with Sub Zero. Spectacular master suite with 6 double closets and private deck. Finished lower level with FP, BR area and full bath. \$699,900. Ask for Sandy Norman. 901-0203



WEST BLOOMFIELD - Fabulous lakefront detached ranch condo in the Woodcliffs. 2500+ sq. ft. on the entry level and an additional 2500 on the finished walkout lower level. Great Room with FP and doorways to deck and water, bleached oak kitchen with island. Library with built-ins, dynamic MBR suite/bath and terrific FR on the lower level walkout. \$479,900. Ask for Sandy Norman. 901-0203



FARMINGTON HILLS. Gorgeous contemporary with first floor MBR suite with 3 vanities, GR with 12' ceiling overlooking commons, pond. Fabulous white formica kitchen, library with 9' ceiling, 3 bedrooms up, fabulous spa in redwood on elevated deck. Shows terrific \$289,900. Ask for Sandy Norman. 901-0203



WEST BLOOMFIELD - Absolutely gorgeous traditional model in Mission Springs, 3100 sq. ft., 4 BR, 2 1/2 BA, LR, library and FR with elevated ceiling, huge kitchen, MBR suite with large bath suite and WIC. Shows like a model. Reduced to \$304,900. Ask for Sandy Norman. 901-0203



WEST BLOOMFIELD - Spacious townhouse condo with 3 BR and 2 1/2 bath. Kitchen with breakfast area, library. Large MBR suite, finished walkout, 2 car attached garage, pool & tennis cts. \$179,900. Ask for Sandy Norman. 901-0203

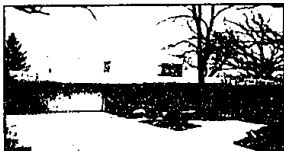


BLOOMFIELD/WABEEK - Fabulous white modular contemporary with dynamic views of the golf course and lake. Over 6000 sq. ft. with 5 BR's and 5 BA's each with a separate bath suite and WIC's. Large entry foyer, marble floors, formal LR, FR and library. High ceilings, decks and an unbelievable finished walkout and 3 car garage. \$849,900. Ask for Sandy Norman. 901-0203

**Thank You For Making Me
The Most Successful Century 21 Agent In Michigan 1989-1996**



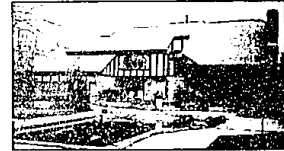
Hire the most successful CENTURY 21 agent in Michigan 1989-1996 with over \$80,000,000 in transactions, you know you're hiring someone who gives the Buyers and Sellers he represents a 110% effort. Hire the most successful CENTURY 21 brokerage in the world, with over \$750,000,000 in sales volume in 1995 Town & Country not only ranks as the top CENTURY 21 firm in the world, but simply the best in the area, put these two winners to work for you.



BLOOMFIELD - Fabulous renovated 3500 sq. ft. ranch with an additional 1000 sq. ft. on a completely finished walkout lower level. Located directly on Forest Lake Country Club rear elevation overlooks fabulous views on two of the holes. Three bedrooms, 3 1/2 bath with newer kitchen, GFA, CA, roof and GR addition, MBR suite addition which brings this residence into the 1990's. Loads of ceramic tiled floors, 2 tiers of decking and loads of upgrading. Reduced \$30,000 to \$519,000. Ask for Sandy Norman. 901-0203



LOWER LONG LAKE, BLOOMFIELD HILLS - Traditional colonial with magnificent fieldstone elevation, and cedar shake roof. Originally built in 1978 by existing owner this residence boasts 4 BR, 4 1/2 BA, FR, paneled library, large island kitchen and 3 FP's. The MBR suite has its own FP, deck, His & Her WICs and large bath suite. There is a finished basement and 3 car garage. Magnificent 1 1/2 acre setting. Reduced over \$250,000 to \$697,000. Ask for Sandy Norman. 901-0203



BLOOMFIELD/WABEEK - 4600 sq. ft. Tudor on 2/3 acre setting with pool in yard. Four bedroom, 4 1/2 bath, two story GR with beautiful built-in wet bar, formal LR and DR. Huge kitchen w/Sub Zero, island, walk-in pantry. MBR suite with his/her WIC, great bath suite, large children's BRs. Fabulous finished lower level with built-ins, circular drive, 3 car garage. \$599,900. Ask for Sandy Norman. 901-0203



FRANKLIN - 3200 sq. ft. ranch on acre + with 4 BR's, 2 BA's and 2 lavatories, LR with cathedral ceiling, FR with custom built-ins, formal DR. Huge basement, updated GFA, CA, and roof, new on market. \$639,900. Ask for Sandy Norman. 901-0203



HIDDEN LAKE-BLOOMFIELD/ECHO PARK - 7700 sq. ft. Tudor. Five bedroom, 5 bath, 2 lav., 3 FP, GR, FR, library and the most spectacular MBR suite you could imagine! White Euro kitchen with dual Sub Zero, glass enclosed sun porch leading down to spa area connecting to FR and an unbelievable walkout. 1500 sq. ft. of decking overlooking a beautiful wooded setting and views of Echo Lake in a distance, 4 car garage. \$1,299,900. Ask for Sandy Norman. 901-0203

ASK FOR SANDY NORMAN

VOICE MAIL 901-0203 HOME 855-7766

MOBILE 907-5414

Century 21
Town & Country

810-642-8100

CENTURY 21 INTERNATIONAL AFFILIATED COMPANY OFFICE