



HANNETT·WILSON & WHITEHOUSE

2511 West Maple Road at Cranbrook
Bloomfield Hills, Michigan 48301

616-6200



CITY OF BLOOMFIELD HILLS

Premium location near Cranbrook with elevated setting for lovely views! Quality throughout this elegant estate with 11 fireplaces, 6 bedrooms (2 master suites), 6 full baths and much more! An exciting new construction. \$3,199,000 BRA130



BLOOMFIELD SITE CONDO

Spectacular first floor master suite with his and hers marble baths and walk-ins. Three bedroom suites on second floor. Custom kitchen with Corian and granite countertops. Dramatic marble and limestone foyer. Lovely hardwood floors. \$1,180,000 PRO531



CITY OF BLOOMFIELD HILLS

Premium location adjacent to Bloomfield Hills Country Club and the Cranbrook Educational Community. Elegant 12,000 sq. ft. living with nearly \$2,000,000 in renovations. A lovely setting for this distinctive home! \$3,900,000 EPP144



OUTSTANDING LAKE HOME

Access to Lower Long Lake, Forest Lake and Island Lake! Fireplaced master suite, living room and family room. Private indoor pool conveniently located in lower level. Pretty views in all seasons! A spectacular home! \$1,200,000 LOC187



CITY OF BLOOMFIELD HILLS

Spectacular setting of over 2 acres near Bloomfield Hills Country Club! Spacious interior so perfect for fine entertaining. Lower 1991 addition includes sun room and master suite with double baths. Lovely private pool area. \$1,475,000 VAL184



PEACEFUL LAKE VIEWS

Magnificent home and grounds maintained and maintained to perfection! Marble grand foyer, gracefully curving stairways, 2 master suites with luxurious baths, custom kitchen and appliances. Lovely lake views! \$1,399,999 FRA515



LOVELY LAKE ANGELUS

Sensational lakefront setting at the end of a private lane! Open and bright with updating throughout. Cathedral ceilings, marble entry, master suite with fireplace and private dock, finished walk-out level. \$785,000 LAK237



OUTSTANDING LAKE VIEWS

Custom built in 1991 with numerous updates and expansions in the past year. Two-story living room and dining room with sensational views, first floor master suite with double baths, custom finished lower level! \$1,525,000 LAK870



PRETTY LAKE VIEWS

Great Wing Lake area for this delightful home! First floor master has great lake views, family room with several doorways to patio, second kitchen in finished lower level. Beautifully landscaped! \$640,700 FRA885



CITY OF BLOOMFIELD HILLS

Spectacular condo with all the amenities you could want! First floor master, island kitchen with breakfast room, outstanding lower level, all marble bath with steam shower. \$598,000 KIN15



BLOOMFIELD LOCATION

Over 4,000 sq. ft. of elegant living space with dramatic two-story marble foyer, fireplace, great room and family room, custom kitchen with Corian counters and Sub Zero. Finished basement. \$565,000 IND335



PRETTY BLOOMFIELD AREA

Wooded ravine setting for this spacious home! First floor master suite with adjoining library, custom island kitchen with breakfast room, large formal dining room. Perfect for fine entertaining! \$699,900 NOR263



CITY OF BIRMINGHAM

Highly desirable area for this immaculate home! Refinished hardwood floors, recessed lighting, 2 fireplaces, breakfast area with vaulted ceiling and skylight. Much more! \$389,900 MOH101



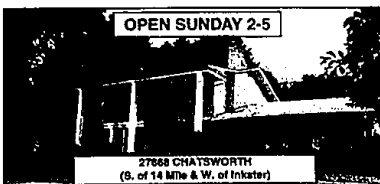
OPEN SUNDAY 2-5

2454 WICKFIELD
(N. of Lone Pine & E. of Middlebelt)



BIRMINGHAM IN TOWN

Premium location for this sharp home! First floor master with great deck, white kitchen, formal dining room, family room with fireplace, lots of storage space. Large bedrooms! \$435,000 SOU788



OPEN SUNDAY 2-5

27688 CHATSWORTH
(S. of 14 Mile & W. of Ingham)

FARMINGTON HILLS

Large scenic lot for this spacious pillared Colonial. Updated island kitchen, library off master suite with fireplace. Lake privileges. Immediate possession. \$289,000 CHA278



BEVERLY HILLS

Stately 1890 farmhouse situated on a heavily treed lot! Stone fireplace in living room and family room. Nine foot ceilings on first floor. Lots of potential! \$249,700 BEV162



INVESTMENT PROPERTY

Charming historical home currently operated as a "Bed & Breakfast" with residential zoning. Surrounded by gardens of many varieties and protected woodlands. \$349,900 MAP240



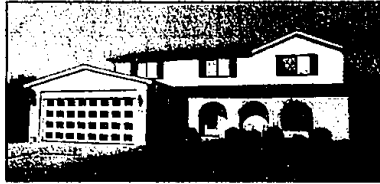
PRETTY LAKE VIEWS

Great family home with hilltop setting for wonderful lake views! Spacious rooms with open floor plan. Many updates. Large lot with privacy! \$189,900 BAY268



CITY OF BLOOMFIELD HILLS

Spectacular elevated wooded setting in the heart of Bloomfield Hills. Perfect location for the home of your dreams. In an area of million dollar homes! \$239,900 BAL000



TROY

Center entrance Colonial with extra large room sizes! Updated foyer with ceramic tile floor and oak spiral staircase. Finished basement, too. \$214,900 OXL382

HOUSES OF QUALITY ARE OUR SPECIALTY!