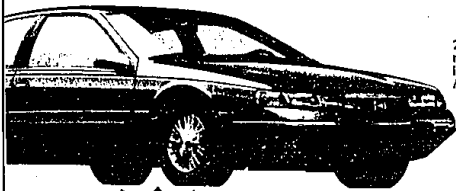


# HINES PARK LINCOLN MERCURY

## 1996 COUGAR XR7



**'Feature Car'**  
262A PACKAGE INCLUDES 4.6L V6, KEYLESS ENTRY, TRACTION CONTROL, rear window defogger, speed control, power lock group, power driver's seat, illuminated entry, leather steering wheel, automatic O/D transmission, premium AM/FM cassette, power antenna and more. Stk. #632492

24 MONTH LEASE

**\$279\*** Per Month

**\$510 Destination Included**

**1996 FINAL CLOSEOUT! OVERSTOCKED ON COUGARS & SABLES. ALL MUST GO!**

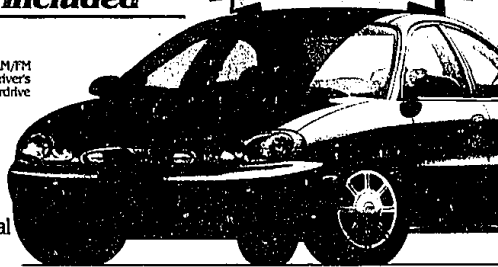
**HINES PARK LINCOLN-MERCURY**  
Chairman's award winner for outstanding customer service  
1992 • 1993  
1994 • 1995

**1996 SABLE GS**  
451A PACKAGE INCLUDES OPTIONAL REMOTE ENTRY, electronic AM/FM cassette, speed control, floor mats, power locks and windows, power driver's seat, aluminum wheels, light group, air conditioning, automatic overdrive trans., 3.0L V6 engine. Stk. #633663

24 MONTH LEASE  
**\$249\*** or **\$219\***

Per Month Per Month with Renewal

**\$550 Destination Included**



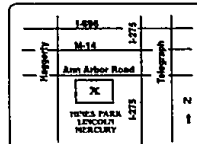
### 1997 MODELS ARE HERE! OVER 500 AVAILABLE FOR IMMEDIATE DELIVERY!

\*24 month closed end non-maintenance lease to qualified customer. Add 6% use tax for total monthly payment. ALL PAYMENTS INCLUDE DESTINATION CHARGES. Payments based on 12,000 miles per year (15¢ excess miles), and \$1500 customer down payment. All manufacturers incentives are figured in lease payments and assigned to dealer. Lessee has option to purchase at lease end and for price determined at lease inception. Lessee is not obligated to purchase at lease end. Lessee is responsible for excess wear and tear. Refundable security deposit (payment rounded up to next \$25). First payment, customer down payment, 6% use tax, title and license fees due at inception. Payments X 24 equal total payments.

# HINES PARK LINCOLN MERCURY

40601 Ann Arbor Road at I-275

(313) 453-2424 • 1-800-550-MERC



**HOURS:**  
Mon. & Thurs. 8:30-9:00  
Tues., Wed. & Fri. 8:30-6:00

## RedHobman PONTIAC GMC TRUCK SEPTEMBER SAVINGS

### IMMEDIATE DELIVERY FROM STOCK ALL NEW '97 SUNFIRE 2 DOOR COUPE

- Automatic
- Gauges & Tach
- Air Conditioning
- Tinted Glass
- Bucket Seats
- AM/FM Cassette
- Custom Wheel Covers
- Console
- Power Steering
- Power Brakes
- Sport Mirrors
- Spoiler
- Body Side Moldings
- Rear Defroster



**Dual Air Bags Anti-lock Brakes**

**RED'S PRICE \$13,395\*** **GM OPTION II \$12,697\***

### ALL NEW 1996 GRAND AM 4 DOOR

- Dual Air Bags Anti-lock Brakes
- Power Windows
- Automatic
- Air Conditioning
- Delogger
- 2.4 Twin Cam Engine
- Stereo Cassette
- Tinted Glass
- Sport Mirrors
- Body Side Moldings
- Custom Covers
- Gauges & Tach



**LEASE WITH \$0 DOWN!**  
**RED'S PRICE \$256.95\*\*** **GM OPTION II \$238.36\*\***  
48 Mo. 48 Mo.

### GMC TRUCK 1996 SAVANA VAN CONVERSION

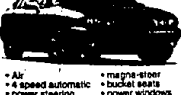
by Starcraft  
Automatic, air, 350 V-8, tilt, cruise, power windows and locks, stereo CD, cassette, conversion package. Stock #6335-T



**SALE PRICE \$27,995\*** **WAS \$31,885**  
**\$1116.75** **Lease For \$445.05\*\***  
TOWARD PURCHASE OR LEASE FOR 36 Mo.

### NEW '96 BONNEVILLE SE DEMO

- Air
- 4 speed automatic
- Power steering
- Power brakes
- 3800 V-6
- 16" aluminum wheels
- 1 speaker
- magnetic stirrer
- bucket seats
- power windows
- power locks
- 16" aluminum wheels
- stereo cassette
- power mirrors
- power seats
- security net
- illuminated entry
- stereo cassette



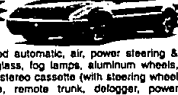
**Dual Air Bags Anti-lock Brakes**

**WAS \$23,947**  
**RED'S PRICE \$19,995\*** **GM. OPTION II \$18,832\***

**INCLUDED WITH ALL PONTIACS**  
• 3-Year "No Deductible" Warranty  
• Courtesy Transportation  
• 24-Hour Roadside Assistance  
**CLIP ANY TRI-COUNTY PONTIAC AD • IT'S GOOD AT RED'S**

### NEW '96 GRAND PRIX SE COUPE

- Dual Air Bags
- 3.1 V-6, 4 speed automatic, air, power steering & brakes, tinted glass, fog lamps, aluminum wheels, spoiler, AM/FM stereo cassette (with steering wheel control), cruise, remote trunk, delogger, power windows & locks, tachometer, mats & more.



**RED'S PRICE \$17,395\*** **GM OPTION II \$16,468\***

### 1996 JIMMY 4 DOOR

V-6, automatic, SLE trim, stereo cassette, electronic transfer case shift, overhead console, power windows and locks. Stock #5779-T **Only a few remain!**



**WAS \$27,441**  
**SALE PRICE \$23,963\*** **GM Employees subtract additional \$1347.35** **Lease For \$297.34\*\***  
TOWARD PURCHASE OR LEASE FOR 36 Mo.

### 1996 SONOMA PICK-UP

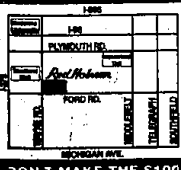
4 cylinder, 5 speed, air conditioning, tach, aluminum windows, stereo cassette, SLS trim. Stock #5729-T **WAS \$19,644**



**SALE PRICE \$11,932\*** **GM Employees subtract additional \$657.95** **Lease For \$190.59\*\***  
TOWARD PURCHASE OR LEASE FOR 36 Mo.

### CARS RED HOLMAN'S SELECT USED VEHICLES TRUCKS

'95 CONVERTIBLE FORMULA FIREBIRD Black, Tan Top, 1,800 miles.	'93-'96 GRAND AM'S 2 or 4 doors 9 to choose!	'96 TRANS AM 6 speed, Black, 6700 miles.	'95 BONNEVILLE SLE's Leather and more. 5 to choose!	'95 TRANSPORT Just over, 3900, power slider	'93-'95 JIMMY'S BLAZERS 9 to choose, starting at	'95 SIERRA 4x4 Short box, red, 1070 miles.	'95 YUKON SLT 4 door, 4x4, red, grey leather	'95 SONOMA CLUB 4x4 2 to choose, Your choice.	'95 SONOMA 5 speed air, always only.
\$15,995	\$7895	\$11,795	\$16,500	\$11,995	\$11,995	\$16,995	SAVE \$17,995	\$17,995	\$9995
'95 FIREBIRD FORMULA 7100, 350, low miles.	'93 SUNBIRD 2 door, white, air, auto. Seat!	'94 GRAND AM GT Coupe, black, V-6, only.	'96 GRAND PRIX 84U Dark red, 6700 miles. Reduced to	'95-6 TOYOTA COROLLAS Special Purchase, 2 choose, 1000.	'95 SIERRA CLUB SLE Loaded, 18,000 miles.	'94 TOYOTA X-TRA CUB Red, air, auto, low miles.	'93 SIERRA REGULAR CAB Large box, SLE, red box, 4000	'92 SIERRA CLUB 3/4 ton, big block, H/D trailer	'95 SAFARI XT All wheel drive, touring edition, Harry Only.
\$15,995	\$7895	\$11,795	\$16,500	\$11,995	Like New!	\$11,395	\$14,595	\$15,500	\$18,995



**SALES: Mon. & Thurs. 8-9, Tues., Wed., Fri. 8-6 • SERVICE: Mon. & Thurs. 7-9, Tues., Wed., Fri. 7-6**  
**FORD ROAD AT WAYNE ROAD, WESTLAND**  
**RedHobman**  
**PONTIAC GMC TRUCK**  
**721-1144**  
ACCELERATED EARNINGS NETWORK 10%  
DON'T MAKE THE \$100 MISTAKE