

# Shabbat

from page B9

Committee did a wonderful job on addressing common issues and bringing them together to accomplish much more than any one congregation could do on its own," said Gordon, an attorney. "But we weren't accomplishing one of the fundamental goals. We were not attracting the marginally involved."

"There is nothing more basic to the religion than the idea of celebrating Shabbat," he continued. "Every Jew has a memory of some sort that connects to the Shabbat and how they celebrated it. It's a connection. It just seemed like the perfect vehicle to meet one of our goals."

What began 20 months ago as a suggestion quickly snowballed into a full-blown program, drawing support from rabbis and leaders in the Jewish community.

Monthly meetings have become brainstorming sessions for the 70 committee volunteers representing supporting congregations and affiliated organizations.

"Everyone is bringing their excitement and ideas to our meetings," said Debi Weinstein of West Bloomfield, who is co-chairing the community-wide "Rekindle the Candle" program with Gross.

Kari Grosinger of Birmingham was an intern at the Jewish Federation when she learned about Rekindling Shabbat and decided to assume the role of coordinator. "I saw the proposal and it sounded very,

**Rekindling Shabbat kickoff events scheduled for Friday and Saturday, Oct. 24 and 25.**  
Adat Shalom Synagogue, 29901 Middlebelt, Farmington Hills (248) 851-5100  
Rabbi Ely Spectro  
Communitywide afternoon and evening program, including Melava Malka and Israeli dancing, beginning at 5:30 p.m. on Saturday.

**Cong. Beth Abraham Hillel Moses**, 5075 W. Maple, West Bloomfield (248) 851-6880  
Rabbi Aaron Bergman  
Soudah Shlishet for families and Havdalah at 5:30 p.m. on Saturday.

**Cong. Beth Achim**, 21100 W. 12 Mile, Southfield (248) 352-8670  
Rabbi Herbert Yoekowitz  
Kiddish at 12:30 p.m. after Saturday morning services with youth group and students participating.

**Cong. Beth Shalom**, 14601 W. Lincoln, Oak Park (248) 547-7970  
Rabbi David Nelson  
New melody-filled Kabbalat Shabbat service at 6 p.m. on Friday. Family Torah service at 10 a.m. on Saturday.  
**Cong. B'nai Moshe**, 6800

very interesting to me," she said. "It had such a far-reaching effect and it gave the congregations autonomy over what they

## REKINDLING SHABBAT

**Drake**, West Bloomfield (248) 788-0600  
Rabbi Elliot Pachtner  
Learners Minyan, LIFE program at 9:30 a.m. on Saturday.

**Cong. Shaarey Zedek**, 27375 Bell, Southfield (248) 357-5544  
Rabbi Irwin Groner  
Early Friday service at 5:30 p.m. Learners Minyan at 9:30 a.m. on Saturday. Tot Shabbat (Semi Shabbat) and Youth Blessing at 9:30 a.m. on Saturday.

**Cong. Shur Tikvah**, 3633 W. Big Beaver, Troy (Northminster Presbyterian Church) (248) 619-9699  
Rabbi Arnold Slautenberg  
Announcement and short program to inspire the congregation at 10 a.m. on Saturday.

**Temple Beth El**, 7400 Telegraph, Bloomfield Township (248) 851-1100  
Rabbi Daniel Syme  
Shabbat dinner for the beginner at 6:15 p.m. on Friday.

**Temple Emanu El**, 14450 W. 10 Mile, Oak Park (248) 967-

could do," Grosinger began working part time in January and has been giving the project her full atten-

4020  
Rabbi Joe Klein  
"Shabbas for the Novice" service at 8:15 p.m. on Friday.

**Temple Israel**, 5725 Walnut Lake Road, West Bloomfield (248) 661-5700  
Rabbi Harold Loss  
Distributed Shabbat bags to the entire congregation on Rosh Hashanah. Congregational Shabbat dinner on Friday, including alternative service at 7:30 p.m.

**Temple Kol Ami**, 5085 Walnut Lake Road, West Bloomfield (248) 661-0040  
Rabbi Norman Roman  
Early Kabbalat Shabbat dinner at 6 p.m.

**Temple Shur Shalom**, 3999 Walnut Lake Road, West Bloomfield (248) 737-8700  
Rabbi Dannel Schwartz  
Family to Family Shabbat dinner, pairing those that celebrate with those that do not at 6 p.m. on Friday.

**Young Israel of Oak Park**, 15140 W. 10 Mile, Oak Park (248) 967-3655  
Rabbi Steven Weil  
Suedah Shlishet with Carol Kaczander on disabilities awareness and issues of accessibility.

tion since June. She works with the individual congregations, lining up speakers, distributing materials and

meeting challenges encountered along the way.

She also handles media relations and works with young adults.

As part of Rekindling Shabbat, the Jewish Federation will host a communitywide "How to Do Shabbat" celebration and an information session, called "Rekindle the Candle," featuring Dr. Ron Wolfson, a renowned author, educator and motivational speaker.

The hands-on program will be held from 8:45 to 9 p.m. on Nov. 20, in the Shiffman Hall of the Jewish Community Center in West Bloomfield.

The event features a question and answer session, demonstrations and displays by vendors selling Shabbat-related items. The \$10 admission fee includes a challah, grape juice, candles and Dr. Wolfson's book, "The Shabbat Seder."

Rekindling Shabbat is endorsed by the Michigan Board of Rabbis. Funding has been provided by the United Jewish Foundation and the Berman/Cohn Pilot Fund for Continuity, supported by Mandell Berman of Franklin and Judge Avera Cohn of Bloomfield Hills.

"The individual congregations are funding it in their own way," added Gordon. "They all need help and they would all be delighted to have angels out there to help them."

For more information about Rekindling Shabbat, call Kari Grosinger at (248) 642-4260.

## 60th

from B9

with memorial gifts from members.

"What else did they keep through the years? An abiding trust in God," said Bongren. "Our continuing focus is on reaching out with the Gospel of Jesus."

Bethlehem Evangelical Lutheran Church is affiliated with the Evangelical Lutheran Church in America. Emmanuel Lutheran Church in Southfield is a daughter congregation.

Linnea Harkonen worshiped with the original Bethlehem founders in Detroit, left when she married and relocated, and rejoined the congregation 20 years ago when she moved to Farmington. Harkonen devotes her spare time to sewing cancer pads and making quilts for world and local relief at the church. Her voice speaks with excitement with the mention of the upcoming celebration of reuniting.

"So many of us are of Finnish background," said Harkonen. "It will be interesting for us to see how we've advanced and where we've gone from the original church."

"There will be the warm fellowship of meeting old friends and members," added Niemi, who still speaks, reads and writes the Finnish language. "The congregation was founded by our forefathers and I wouldn't want to let go of it."

Friends and former members are invited to join the celebration. For availability of banquet tickets, call the church office at (248) 478-6520.



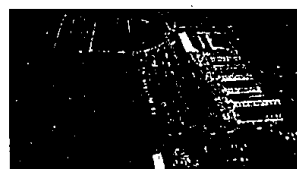
## Ann Arbor Antiques Market

OUR 29th SEASON

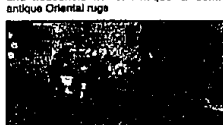
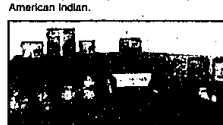
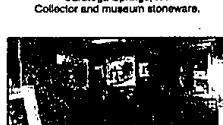
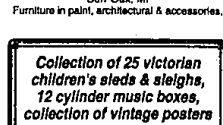
M. BRUSHER

5055 Ann Arbor-Saline Road, Ann Arbor, Michigan  
(Exit #175, off I-94, then South 3 Miles)

Sunday, November 2 6:00 A.M. - 4:00 P.M.

MARGARET BRUSHER'S ANN ARBOR ANTIQUES MARKET  
ANN ARBOR, MICHIGAN

Admission \$5.00

CONSERVATION & RESTORATION SPECIALISTS  
Represented at every show. Furniture, paintings, textiles, ceramics, clocks & Oriental rugs.W. DAVIS  
N. Tonawanda, NY  
Lots of ChintzwareM.L. SPEERS  
Ann Arbor  
Dolls & toy sewing machinesSALLY PARRISH  
Brighton, MI  
Period furniture, accessories.TONY'S TREASURES  
Cincinnati, OH  
Decorative architecturalAIROLA & RITCHIE  
Saline, Michigan  
Fine selection of English pottery. Clarice Cliff, Wedgwood, Moorcroft, Majolica.THATCHER GOETZ  
Goetzville, MI  
American furniture & paintingsLINDA ELLEN KEELE  
Dells, WI  
Rare & collectible books.LARRY & DEBI SCHILDT ANTIQUES  
Mohnton, PA  
18th & 19th century furniture, clocks, pewter, glass & folk art.ED WEZOWICZ  
Grand Rapids, MI  
Vintage Sporting goods.BOULTINGHOUSE & HALL  
Midway, KY  
18th & 19th century furniture & accessoriesMAD ANTHONY BOOKS  
Ada, MI  
Over 5,000 titles, reference books on antiquesHAGOPIAN WORLD OF RUGS  
Ann Arbor, MI  
Featuring 19th century Provincial furniture and household items. Antique & semi-antique Oriental rugsCLOANNE SHYDER  
N. Manchester  
Americans, folk art, decorative art, Native American Indian.JOHN & ELLEN WILLIAMS  
Troy, OH  
Unusual AmericanaBRANCHWATER BOOKS & PRINTS  
Branch, MI  
Including antiquarian Michigan maps 1830-1920's (over 20), Santa's & holiday prints, calendar art works.LAURA MATHEWS  
Milan, IN  
Country furniture & accessories.HISTORIC INTERIORS  
Ann Arbor, MI  
Period furniture and accessories.STONE MERCHANT  
Sanatoga Springs, NY  
Collector and museum stoneware.LYNN & MICHAEL WORDEN  
Burr Oak, MI  
Furniture in paint, architectural & accessories.CANALE'S ANTIQUES  
Delaware, Ohio - Fine Americana AlwaysKATHY MONGENAS  
Loveland, Ohio  
18th & 19th century English furniture & accessories.WIL. SPENCER, THE RAGMAN  
Portland, MI  
Canes, photography & daguerotypes, medicalWOODY STRAUB  
Ponce de Leon, Fla  
Furniture & paintings focus Western & Native American.

Collection of 25 victorian children's sleds &amp; sleighs, 12 cylinder music boxes, collection of vintage posters

*This is the Last Show of the Season*

ALL DEALERS PICTURED  
WILL BE AT THE SHOW!

FOR FURTHER  
INFORMATION  
CALL 313-662-9453