

**COMMUNITY MESSENGER**

**Community Messenger** features spiritual announcements from Oakland County religious institutions. Ten days before the desired publication date, please write: *Community Messenger, c/o Beliefs & Values Editor, Observer & Eccentric Newspapers, 805 E. Maple, Birmingham, MI 48009. Our fax number is (810) 644-1314.*

**■ DIVORCE RECOVERY**  
 St. Anastasia Parish, 4571 John R. Road, Troy, is holding a winter divorce recovery workshop from 7 to 9:30 p.m. on six consecutive Fridays, from Feb. 20 through Mar. 27. Each weekly session includes a video presentation and a discussion led by a licensed therapist centering on the book, "Growing Through Divorce." The \$15 fee includes the book. For information, call Chris Loafman at (248) 689-8390, or leave your name and address at the parish office and a registration form will be mailed to you.

**■ SISTERHOOD SHABBAT**  
 Temple Beth El, 7400 Telegraph Road, Bloomfield Hills, is celebrating a Sisterhood Shabbat at 8 p.m. on Friday, Jan. 23, with the presentation of an original work, "Echad!" Composed by guest artist, Cantor Stephen Richards, the work is a service in music for cantor, choir and congregation, which joins all of its elements into a single unit, "Echad-Ono." Debuting that evening is a specially commissioned composition sung by Cantor Stephen Dubov with words by Rabbi Daniel Sydnor and music by Cantor Richards. The community is welcome to attend Sisterhood Shabbat and participate in the "Echad!" service. For information, contact Barbara Grant at (248) 951-1100.

**■ JEWISH JAZZ**  
 Temple Israel, 6725 Walnut Lake Road, West Bloomfield, presents "A Jewish Life in Jazz," a free, informal lecture and concert with acclaimed pianist and composer Ben Sidran, at 8:30 p.m. on Sunday, Jan. 25. Jazz clinics with Sidran begin at 1:30 p.m. on Monday, Jan. 26, at Music North, 6900 Second, on the campus of Wayne State University in Detroit. "The two-day event is being funded through the DeRoy Testamentary Foundation and sponsored by The Cohn-Haddow Center for Judaic Studies, the Department of Music at Wayne State University and Temple Israel. For information, call the Cohn-Haddow Center at (313) 577-2679 or Temple Israel at (248) 661-5700. Complimentary tickets may be obtained by calling the Temple.

**■ DIVORCE RECOVERY SEMINAR**  
 Troy Baptist Church, 3193 Rochester Road, just north of Big Beaver, in Troy, offers DivorceCare at 9 a.m. each Sunday beginning Jan. 25. Childcare is provided. The divorce recovery seminar and support group features nationally recognized experts on topics like facing your anger, facing your loneliness, depression, new relationships, kid care and forgiveness. For information, call Brad at (248) 740-0888 or (248) 689-2015.

**■ FUN AND FITNESS**  
 Faith Covenant Church, Drake and 14 Mile Road, Farmington Hills, offers a Fun and Fitness program with exercise, fellowship, crafts and speakers from 9:30 to 11:30 a.m. on Thursdays beginning Jan. 29. Upcoming topics include building your child's home library, picture framing, weight watching and information regarding bone marrow transplants. Babysitting is available for infants through age 5. For information, call (248) 661-9191.

**■ CABARET NIGHT**  
 Cong. Beth Shalom, 14601 W. Lincoln Road, Oak Park, is holding a cabaret night at 8 p.m. on Saturday Jan. 31. Presented by the synagogue's cultural commission, "A Journey Through Musical Gema" features soprano Valerie Yuva and lyric tenor David Truiano accompanied by pianist Jon Schneider.

Among the composers to be represented are Victor Herbert, Lerner and Loewe, George Gershwin, Rodgers and Hammerstein, George Bizet, Arnold Schoenberg and Andrew Lloyd Webber. Wine, pastries and snacks will be served. The community is invited. Admission is \$12 in advance and \$14 at the door. Tables of 10 may be reserved in advance with payment in full. For information, call the synagogue at (248) 547-7970 or Doris Schey at (248) 646-7112.

**■ JEWISH PRAYER**  
 Cong. B'nai Moshe, 6800 Drake Road, West Bloomfield, holds free studies on "Exploring Jewish Prayer" with Cantor Earl Berria at 9:30 a.m. each Sunday through February. The subject is the conceptual framework of Jewish prayer. The group meets in the synagogue's newly dedicated education wing (west entrance) immediately following Sunday minyan, which begins at 8:30 a.m. A complementary

light breakfast is offered at 9 a.m. For information, contact Cantor Earl Berria at (248) 789-0600 or e-mail cantorber@bnaimeshah.org.

**■ BIBLE CLASS**  
 Lutheran Church of the Redeemer, 1800 W. Maple Road, Birmingham, holds a non-denominational community Bible class with Margaret Hess from 9:30 to 11 a.m. Thursdays. Nursery is provided. Contact Maggie at (248) 352-4430.

**■ SCHOLARSHIPS AVAILABLE**  
 Applications are being taken for \$500 Oakland Century B'nai B'rith scholarships. To apply, submit a grade transcript (no certification necessary) together with a typewritten memorandum in letter form demonstrating details of compliance with each of the following requirements. The applicant must be a Jewish student from the Metropolitan Detroit area who is now attending a college or university with at

least one full year of credits toward a degree. The applicant should also have superior scholarship, demonstrate a need for financial assistance, show leadership qualities for the benefit of the Jewish community and have campus activity that shows established roots in Metropolitan Detroit. Applications are due April 20. Mail to: Harold J. Samuels, chairman scholarship committee, 26240 Inkster Road, Southfield, MI 48034.

# The Best Savings You Can Imagine.

**1998 MERCURY SABLE GS**

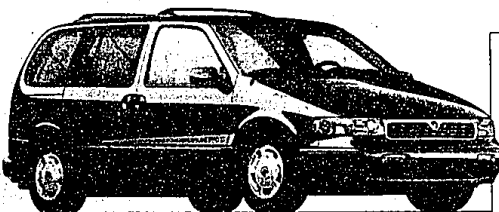
**\$269**

PER MONTH FOR 27 MONTHS\*

27-Month/27,000-Mile Red Carpet Lease  
 Capitalized Cost ..... \$18,669  
 Down Payment (Net of RCL Cash) ..... \$1,120  
 Refundable Security Deposit ..... \$275  
 First Month's Payment ..... \$269  
 Cash due at signing ..... \$2,094  
 \$1.50/mile over 27,000 miles



**Features Include:**  
 3.0-liter V6 engine • Second Generation dual air bags\* • Tilt steering column  
 Flip-fold center console • Power windows and door locks



**1998 MERCURY VILLAGER GS**

**\$309**

PER MONTH FOR 24 MONTHS\*

24-Month/24,000-Mile Red Carpet Lease  
 Capitalized Cost ..... \$22,031  
 Down Payment (Net of RCL Cash) ..... \$2,350  
 Refundable Security Deposit ..... \$325  
 First Month's Payment ..... \$309  
 Cash due at signing ..... \$2,984  
 \$1.50/mile over 24,000 miles

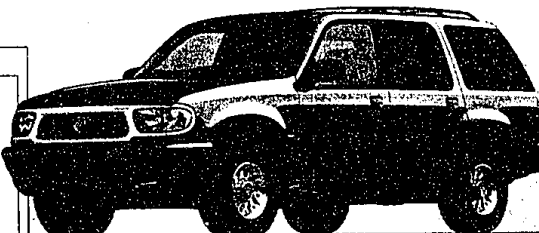
**Features Include:**  
 3.0-liter SOHC V6 engine • Flexible seating system • Second Generation dual air bags\* • Front-wheel drive • Power rack-and-pinion steering

**1998 MERCURY MOUNTAINEER**

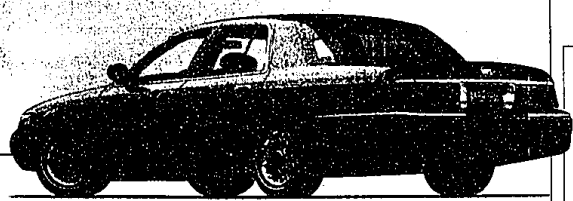
**\$369**

PER MONTH FOR 24 MONTHS\*

24-Month/24,000-Mile Red Carpet Lease  
 Capitalized Cost ..... \$28,394  
 Down Payment ..... \$1,990  
 Refundable Security Deposit ..... \$369  
 First Month's Payment ..... \$369  
 Cash due at signing ..... \$2,734  
 \$1.50/mile over 24,000 miles



**Features Include:**  
 5.0-liter OHV V8 engine • Power windows and door locks • Second Generation dual air bags\*  
 4-wheel disc anti-lock brakes • Fingertip speed control with tap-up/tap-down feature



**THE NEW 1998 MERCURY GRAND MARQUIS**

**\$500**

CASH BACK\*

—OR—

**Special Introductory Lease Rates**

**Features Include:**  
 4.6-liter SOHC V-8 engine • Second Generation dual air bags\* • 8-way power driver's seat • Power decklid release, locks and windows • Dual power fold-away mirrors  
 • Rear seat heat ducts • Fingertip speed control with tap up/tap down feature

**ARRIVING DAILY!**

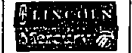
Imagine yourself in a Mercury

[www.lincolnm Mercury.com](http://www.lincolnm Mercury.com)

\*1998 Mercury Sable GS MSRP \$19,995 excluding title, tax, license fees. Lease payment based on average capitalized cost of \$3,367. MSRP for 27-month closed-end Ford Credit Red Carpet Lease purchased in the Detroit Region through 11/30/97. Lessee is responsible for excess wear/tear. For special lease terms and \$200 RCL cash take new retail delivery from dealer stock by 4/29/98. 1998 Mercury Villager GS with PEI-P92 MSRP \$24,110 excluding title, tax, license fees. Lease payment based on average capitalized cost of \$1,317. MSRP for 24-month closed-end Ford Credit Red Carpet Lease purchased in the Detroit Region through 11/30/97. Lessee is responsible for excess wear/tear. For special lease terms and \$2,000 RCL cash take new retail delivery from dealer stock by 4/29/98. 1998 Mercury Mountaineer with V8 engine, AWD and PEI-P55A MSRP \$31,145 excluding title, tax, license fees. Lease payment based on average capitalized cost of \$1,371. MSRP for 24-month closed-end Ford Credit Red Carpet Lease purchased in the Detroit Region through 11/30/97. Lessee is responsible for excess wear/tear. For special lease terms take new retail delivery from dealer stock by 4/29/98. For \$500 cash back on 1998 Mercury Grand Marquis, take new retail delivery from dealer stock by 4/29/98. \*Always wear your safety belt and secure children in the rear seat.



Visit Your Local Metro Detroit Mercury Dealer.



**ANN ARBOR Apollo**  
 2100 W. Stadium Blvd.  
 Ann Arbor, MI 48106  
 (313) 668-6100

**DEARBORN Krug**  
 2151 Michigan Ave.  
 Dearborn, MI 48124  
 (313) 274-8830

**DETROIT Bob Maxey**  
 16201 Mack Ave.  
 Detroit, MI 48227  
 (313) 883-4000

**DETROIT Park Motor**  
 1800 Woodward Ave.  
 Detroit, MI 48202  
 (313) 869-5000

**FARMINGTON Bob Dusseau**  
 3623 Grand River Ave.  
 Farmington Hills, MI 48334  
 (248) 474-3170

**GARDEN CITY Stu Evans**  
 3120 Ford Rd.  
 Garden City, MI 48135  
 (313) 423-4300

**NOVI Varsity**  
 49251 Grand River  
 Novi, MI 48240  
 (248) 350-NOVI (6620)

**PLYMOUTH Hines Park**  
 42601 Ann Arbor Rd.  
 Plymouth, MI 48178  
 (734) 550-MERC

**ROCHESTER HILLS Crissman**  
 1815 South Beaumont Rd.  
 Rochester Hills, MI 48315  
 (248) 652-4200

**ROSEVILLE Arnold**  
 24388 Gravel  
 Roseville, MI 48068  
 (810) 445-6500

**ROYAL OAK Diamond**  
 22100 South Main Street  
 Royal Oak, MI 48067  
 (248) 541-8800

**SOUTHFIELD Stein**  
 24150 West 12 Mile Rd.  
 Southfield, MI 48034  
 (248) 354-9400

**SOUTHGATE Stu Evans**  
 16830 Fort Street  
 Southgate, MI 48190  
 (313) 295-8800

**STERLING HEIGHTS Crest**  
 36200 Van Dyke  
 Sterling Heights, MI 48315  
 (810) 939-6500

**TROY Bob Borst**  
 1950 West Maple  
 Troy, MI 48068  
 (248) 643-6600

**WATERFORD Mel Farr**  
 4128 Highland Rd. 3rd Fl.  
 Waterford, MI 48326  
 (248) 683-9500

**WYSLANT Sesi**  
 950 East Michigan  
 Wyandotte, MI 48196  
 (313) 482-7133