

## POLICE AND FIRE CALLS

The following are police and fire incidents reported during the past week in Farmington and Farmington Hills.

### VANDALISM

**In Farmington Hills:**  
Vandals smashed a plate glass window with a rock at Enterprise Rent-a-Car on Grand River June 5, causing \$250 damage.

### CHECK MATE

**In Farmington Hills:**  
Police arrested a Detroit man, 32, after he tried to open an account with a bogus cashier's check for \$8,600 at Michigan National Bank on 14 Mile and Orchard Lake June 7. On June 6, the man told the clerk he'd return the next day to draw on the account. The clerk checked with the issuing bank, a Southfield-based credit union, and found the check was counterfeit. Bank staff phoned Hills police when the man

returned to withdraw \$8,400. The man is believed to have passed two counterfeit checks at a Standard Federal in Northville for a total of \$16,600. One bank estimates losing \$33,000 through his scheme.

### INDECENT EXPOSURE

**In Farmington Hills:**  
Police arrested a Walled Lake man, 25, after a woman saw him masturbating inside a 1989 Pontiac Sunbird parked at Rita Aid on 12 Mile around 5:25 p.m. June 8. Police questioned the man, who denied the incident and said he was scratching himself. He later admitted to the act, saying he thought no one could see him.

Police also confiscated six grams of marijuana and six roaches inside the car. Officers also found seven pornographic magazines. The man was also carrying \$1,664 in cash, which was

taken for possible drug forfeiture.

### BREAK INS

**In Farmington Hills:**  
Someone broke into a 1997 Jeep Wrangler parked at Gateway Apartments and stole a stereo, radar detector and two zip-up windows the night of June 7-8.

Thieves broke into three cars parked at Mr. Muffler on Northwestern Highway, stealing tires, car stereos and CDs. Cars attacked include: 1975 Pinto, 1991 Buick Regal and 1994 Toyota pickup.

### ATTEMPTED BURGLARY

**In Farmington Hills:**  
Suspected burglars smashed two plate glass windows in an attempt to break in to Jonna Wine Shop on Halsted the night of June 7-8, causing \$700 damage.

### DISRUPTING THE PEACE

**In Farmington Hills:**  
Police ticketed a Shawasssee Street man after complaints he was revving engines and using power tools at all hours June 9. Police warned the man three times before issuing the ticket.

### DRUNKEN DRIVING

**In Farmington Hills:**  
Police arrested a Farmington man, 72, for drunken driving after he hit a man on a bike outside of Bamboozles on Eight Mile around 5 p.m. June 9. The bicyclist, who was hit as the 1997 Buick was exiting the parking lot, received scratches on his knee. He refused to be taken to a hospital. The driver said he had three martinis. His blood alcohol level was 20 percent, which is twice the legal limit of .10 percent.

### ASSAULT

**In Farmington Hills:**  
A customer punched an 18-year-old

Livenia man in the head at Blockbuster Video on Middlebelt June 9. The customer, who was angry over a rental, fled in a white Mercedes Benz. The man's rental card lists a Southfield address.

### BREAK INS

**In Farmington Hills:**  
Someone broke into a 1993 Pontiac Bonneville parked on Northwestern Highway and stole a cellular phone, six CDs and 10 cassettes the night of June 7-8.

A 1992 Ford coach van was broken into in an attempt to steal an indash stereo the night of June 9-10.

Assorted power tools were stolen from a 1999 Ford van parked on Oxford Street June 10.

# Summer series begins with magic

Downtown Farmington's Summer Fun Series begins Wednesday, June 16 with a magic show by Doug Scheer and continues until early August.

The free events, all on Wednesdays except for Thursday, July 8, are at the Farmington Civic Theatre, Orchard Street Park or "Under the Tent" at the Downtown Farmington Center.

While kids enjoy the activities, parents can browse at various sidewalk sales.

For more information about the series, sponsored by the Farmington Downtown Development Authority, call (248) 473-7283.

Following is the series schedule:

ule:

■ 10:30 a.m. and noon,

Wednesday, June 16, "Under

the Tent," Doug Scheer's "The

Pollution Solution" fun and

magic show, presented by

Clothes Encounters.

■ 10:30 a.m. and noon,

Wednesday, June 23, "Under

the Tent," Deb's Country Collectibles

presents a "Jack & the

Beanstalk" puppet adventure.

■ 10:30 a.m. and noon,

Wednesday, June 30, at the

Civic Theatre, "Zemo the Yo-Yo

Man," presented by Dubin Opto-

metric.

■ 10 a.m. through 2 p.m.

Thursday, July 8, "Shop, Swap

and Sell," at Orchard Street

Park, dubbed as a garage sale

"for kids, by kids." Table space is

free. Pre-registration is required;

call (248) 473-7278.

■ 10:30 a.m. and noon,

Wednesday, July 14, "Under the

Tent," Dagwood's Doll presents

"The Amazing Clark," an action-

packed, fun-filled magic show

with audience participation.

■ 10:30 a.m. and noon,

Wednesday, July 21, at the Civic

Theatre, "The Variety Show,"

with talented ventriloquist

Richard Paul, who brings his

unique puppet characters to the

stage.

■ 10:30 a.m. and noon,

Wednesday, July 28, "Under the

Tent," it's "The Monster that Ate

Your Garden," presented by

Three Oaks Furniture and pre-

sented by the Mask Puppet The-

atre.

■ 10:30 a.m. through 2 p.m.

Wednesday, Aug. 4, "Under the

Tent" is a petting zoo, presented

by NBD Bank. Carousel Acres

will bring a variety of farm ani-

mals to view and pet.

The Civic Theatre is located on Grand River, just east of Farmington Road. Orchard Street Park is one-quarter mile south of Grand River, east of Farmington Road. The Downtown Farmington Center is located south of Grand River, about two blocks east of Farmington Road.

## POOL FACTORY CLOSEOUT

Limited offer! Below Mfg. cost!

MARINER O.D. 16'x31'  
SWIM AREA 15'x24'

ALL MARINER

POOLS INCLUDE:

• Filter & Pump

• Steel Bracing

• Huge Sundeck

• Pool Ladder

• Set-in Vinyl Liner

• Safety Fence & Stairs

• Vacuum Cleaner

• Blue Water

SUNSHINE POOLS

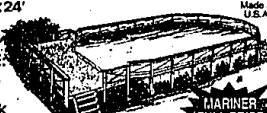
FULL FINANCING

ARRANGED

1-800-754-0050

24 HRS.

ECONOMICAL • SAFE • BEAUTIFUL



MARINER

OVAL

INSTALLATION & DELIVERY AVAILABLE!

FREE

SHOP-AT-HOME SERVICE

1-800-754-0050

24 HRS.

ECONOMICAL • SAFE • BEAUTIFUL

# School tax rate drops

BY JILL HOCKMAN  
STAFF WRITER  
jhockman@homecomm.net

Homeowners in the Walled Lake Consolidated School District will see a reduction in the local school portion of their tax bills next year.

The Walled Lake Board of Education on Thursday voted to reduce the school property tax rate to 7.862 for residential property. That's down from 8.1074 during the 1998-99 school year.

## WALLED LAKE

The Walled Lake district includes a northwest portion of Farmington Hills.

The move will save the owner of a \$150,000 home about \$20 a year, according to Sandra Motz, executive director of business services for the district.

"Basically I have no control over these millage rates... but it's nice to see that we can (reduce them), and I know the residents appreciate it," Motz said.

Proposal A, first in effect during the 1993-94 school year, changed the setup of school funding in Michigan. As the district's taxable value goes up, the property tax rate for homeowners goes down, Motz said.

Walled Lake Schools can collect \$437 per pupil. That's in addition to the 8 mills collected by the state and distributed back to school districts.

The district's taxable value increases as new property is built and existing homes are reassessed. For existing homes, the largest assessment increase occurs when a home is sold. Otherwise, home value increases are capped at the rate of inflation, which is currently 1.6 percent.

The district's taxable rate went up about 7 percent this year, Motz said. That includes property in Commerce, Novi, West Bloomfield, White Lake, Farmington Hills, Orchard Lake, Walled Lake and Wixom.

Under Proposal A, the rate for businesses remains constant at 18 mills.

The West Bloomfield Board of Education is expected to reduce that district's property tax rate when next school year's budget is presented June 21, according to Tom Goulding, director of business services for West Bloomfield Schools.

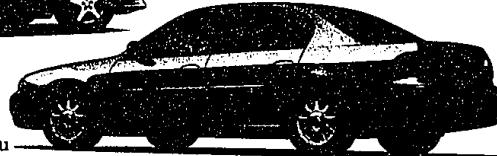
Goulding said he expects the rate to drop to 8.6486 mills. That's about a quarter mill less than last school year, he said.

# Just Announced!

## Great Cash Offers From Chevrolet.



Cavalier Coupe



Malibu

## Choose From These Chevrolet® Offers.

1999 Cavalier®

\$2,000 Cash Back\*

or

\$199 a month

36-Month Lease/35 Monthly Payments

\$0 Due at Lease Signing

No Security Deposit Required

(Tax, title, license and registration extra.)

GM EMPLOYEE

\$169 a month

36-Month Lease/35 Monthly Payments

\$0 Due at Lease Signing

No Security Deposit Required

(Tax, title, license and registration extra.)

1999 Malibu®

\$1500 Cash Back\*

or

\$209 a month

36-Month Lease

\$859 Due at Lease Signing

No Security Deposit Required

(Tax, title, license and registration extra.)

GM EMPLOYEE

\$179 a month

36-Month Lease

\$829 Due at Lease Signing

No Security Deposit Required

(Tax, title, license and registration extra.)

See Your Local Chevy™ Dealer Today.



For more details call 1-800-950-2438 or visit www.chevrolet.com.

\*Cash Back available only to residents of MI, MN, WI and select counties of IL, IN, IA, KY, MO, NE, ND, OH, PA and SD. Call 1-800-950-CHEV for residency requirements. You must take retail delivery from participating dealer stock by 9/30/99. Not available with special GMAC finance or lease offers.

†Cavalier payments based on 1999 Chevrolet Cavalier and MSRP of \$14,001; 35 monthly payments total \$6,965. Malibu payments based on 1999 Chevrolet Malibu and MSRP of \$17,273; 36 monthly payments total \$8,444. Option to purchase at lease end for an amount to be determined at lease signing. GMAC must approve lease. Available only to residents of MI, MN, WI and select counties of IL, IN, IA, KY, MO, NE, ND, OH, PA and SD. Call 1-800-950-CHEV for residency requirements. You must take retail delivery from participating dealer stock by 7/1/99 for Malibu and by 9/2/99 for Cavalier. Mileage charge of \$20 per mile over 36,000 miles. Lessee pays for maintenance, repair and excess wear. If lease terminates early, lessee is liable for all unpaid monthly payments. Payments may be higher in some states. Not available with customer cash offers.

‡For GM Employee offers, Cavalier payments based on 1999 Chevrolet Cavalier and MSRP of \$11,916; 35 monthly payments total \$5,915. Malibu payments based on 1999 Chevrolet Malibu and MSRP of \$17,273; 36 monthly payments total \$8,444. Option to purchase at lease end for an amount to be determined at lease signing. GMAC must approve lease. Available only to residents of MI, MN, WI and select counties of IL, IN, IA, KY, MO, NE, ND, OH, PA and SD. Call 1-800-950-CHEV for residency requirements. You must take retail delivery from participating dealer stock by 7/1/99 for Malibu and by 9/2/99 for Cavalier. Mileage charge of \$20 per mile over 36,000 miles. Lessee pays for maintenance, repair and excess wear. If lease terminates early, lessee is liable for all unpaid monthly payments. Payments may be higher in some states. Not available with customer cash offers. Available only to qualifying GM employees and eligible extended family members. All current GM-S program rules and restrictions apply.

©1999 GM Corp. Buckle up, America!