

How to make a garden in the lawn

Have you ever contemplated making a new garden, but the lawn was already established and it just looked like too much work? The Hill and Dale Garden Club of Farmington offers these tips for making a garden in the lawn.

After deciding where you want a new garden or extending the size of an existing garden, it is suggested that newspapers and mulch can be used instead of power tillers or lifting the sod. This way, by adding a bit of a garden bed at a time you can take a look at how you're doing and can change your design as needed. The newspapers and mulch prevents the lawn from getting sunlight and the grass will die and decompose in a few months. This method adds some nutrients to the soil when the newspapers and dead grass decompose.

This can also mean less weeding. By using the tilling method or digging up your lawn, you

would begin to notice a lot of weeds coming back up. By using the paper and mulch method, the weed seeds are smothered. After deciding where your new garden area is to be created, make a design plan on paper indicating the position of all new plants and the size when they are fully grown. The next step would be to place your plants in their planned positions on the grass.

Now fill your wheelbarrow with newspapers and mulch, such as compost and shredded leaves, or commercial mulch such as cocoa bean hulls or shredded bark. You can also spread a layer of compost under commercial mulch to provide additional nutrients. During dry spells, spray the mulch to keep it from blowing away. Hard rains can wash away even the best mulches, so keep some extra mulch to add to bare areas.

Do not use the glossy ad pages, as they are coated with chemi-

cals and don't break down fast.

It is necessary to create an edge around your new garden area to keep the grass from invading the bed and to prevent the mulch from washing away. Create a trough around the perimeter by removing a couple of rows of sod. If you are using edging, position it now. Next spread overlapping sections of newspapers (form layers thick) and fill the trough with mulch.

Once the edge is complete, set in each plant by cutting out a square area. To cut the grass roots, run the spade under the sod. Set in the plant so the crown is even with the top of the surrounding grass. Back fill the hold with soil. Now spread layers of newspaper around the plant, making sure to overlap the sections of newspaper to four inches. Some open soil should be left around the plant.

Now cover all the remaining grass with newspapers and add about 2 inches of mulch. Water

The Hill and Dale Garden Club meets tonight at 7 p.m. at the Village Green apartment clubhouse.

the new plants regularly at their base and also the mulch which keeps the papers soggy and helps keep the mulch from blowing around.

After about two months, the grass should be completely dead, and the roots of the plants can grow freely. This method of creating a garden in your lawn is a good way to try something new.

The Hill and Dale Garden Club meets tonight at 7 p.m. at the Village Green Apartments Clubhouse, not the Batsford Inn. It is located on the east side of Haggerty a block south of Fourteen Mile. Call 605-3051 for more information. All are welcome.



Accepting kudos: (Left) Michele Eleghart, Heather Marosz and Michelle Quicho of Bozell Worldwide Inc. receive recognition for the company's benevolent work for the St. Vincent and Sarah Fisher Center.

Ad company cited

Bozell Worldwide Inc., the third largest ad agency in Michigan, was presented with the "Volunteer Group of the Year" award by the Michigan Federation of Private Child and Family Agencies recently in Lansing.

Bozell was selected for contributions of time and expertise to support the St. Vincent and Sarah Fisher Center in Farmington Hills.

"We are very pleased that the efforts of Bozell Worldwide and their employees have been publicly recognized," said Jean Vickers, the executive director of the center.

"We nominated Bozell because of their incredible dedication to our program. Not only have they supported the center in their field of expertise, but they have served as mentors to our children and have inspired them to feel good about themselves."

Bozell has served as the agency of record for the center on a pro-bono basis since 1996. When the company was approached to help, 38 staff members came forward to volunteer their time and talents. Since that time, Bozell Inc. designed a new logo for the center, and new business materials.

Good neighbor garden contest looking for entries

The Good Neighbor Garden Contest sponsored by the Farmington Garden Club is now taking recommendations.

Entries must be postmarked no later than Wednesday, June 30.

You can enter your own garden or someone else's (with their permission). It may be any type of non-professional, residential garden located between Haggerty and Inkster, Eight Mile and 14 Mile in Farmington or Farm-

ington Hills. Awards include gift certificates from English Gardens and Semerest Collection. Judging will be from July 8-16. Gardeners will be contacted. Past winners have included

patio, herb, perennial, rock, water and flower gardens. Gift certificate winners from last year are ineligible for prizes this year.

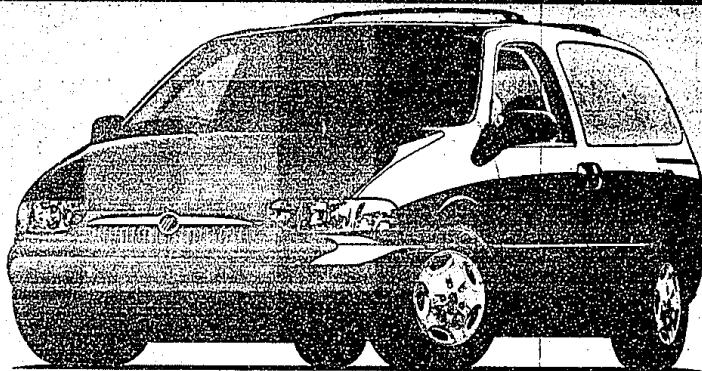
For more information, call 426-0817 or 615-3616.

Get the most...for the lease.

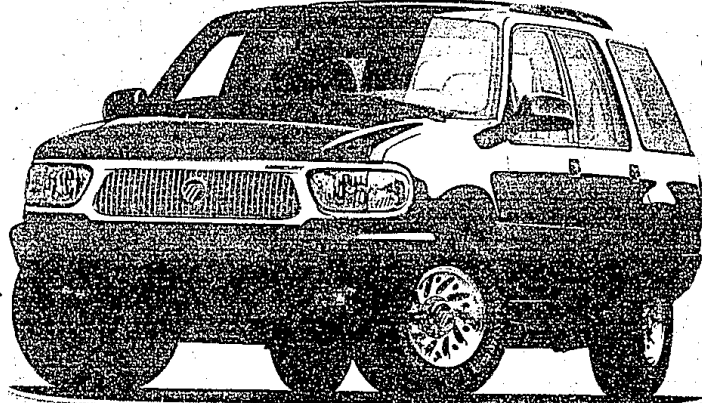
\$259*

PER MONTH FOR 36 MONTHS

36-Month/36,000-Mile Red Carpet Lease	
Capitalized Cost	\$21,785
Down Payment	\$2,050
Refundable Security Cash	\$275
First Month's Payment	\$259
Cash Due at Signing	\$2,584
\$15/mile over 36,000 miles	



1999 MERCURY VILLAGER
 FEATURES INCLUDE: 3.3L SOHC V-6 engine • Front-wheel drive • Second Generation dual air bags** • In-Track™ rear sliding seat system • AM/FM stereo/cassette • 100,000-mile scheduled tune-up intervals*** • Power front windows and door locks



1999 MERCURY MOUNTAINEER
 FEATURES INCLUDE: 5.0-liter OHV V-8 engine • Power windows and door locks • Second Generation dual air bags** • 4-wheel disc anti-lock brakes • Speed control with tap-up/tap-down feature

\$339*

PER MONTH FOR 24 MONTHS

24-Month/24,000-Mile Red Carpet Lease	
Capitalized Cost	\$26,874
Down Payment	\$2,600
Refundable Security Cash	\$350
First Month's Payment	\$339
Cash Due at Signing	\$3,289
\$15/mile over 24,000 miles	

Imagine yourself in a Mercury

www.lincolnm Mercury.com

LEASE PAYMENT SUBJECT TO DEALER PARTICIPATION. PAYMENT WILL VARY BASED ON ACTUAL DEALER CONTRIBUTION. *1999 Mercury Mountaineer AWD MSRP \$30,245 and 1999 Mercury Villager MSRP \$22,995, assumes \$1,000 dealer contribution on Mercury Mountaineer and \$1,000 RCL cash on Mercury Villager. Excluding tax, title and license fees. Lease payment based on average capitalized cost of 92.16% of MSRP on Mercury Mountaineer and 94.74% of MSRP on Mercury Villager for leases purchased in the Detroit Region through 2/28/99. Residency restrictions apply. Dealer participation may vary. For special lease offers and RCL cash, take new retail delivery from dealer stock by 7/5/99. See dealer for details. **Always wear your safety belt and secure children in the rear seat. ***Under normal driving conditions with routine filter/fluid changes.



Visit Your Metro Detroit Mercury Dealer.

- ANN ARBOR**
Apollo
 2100 W Stadium Blvd
 Farmington Hills, MI 48334
 (734) 668-6100
- DEARBORN**
Krug
 2151 Michigan Ave
 Dearborn, MI 48124
 (313) 274-8800
- DETROIT**
Bob Maxey
 7001 Mack Ave
 Detroit, MI 48202
 (313) 865-4555
- DETROIT**
Park Motor
 8100 Woodward Ave
 Detroit, MI 48202
 (313) 869-5200
- FARMINGTON**
Jack Demmer
 3623 Grand River Ave
 Farmington Hills, MI 48334
 (248) 474-3170
- GARDEN CITY**
Siti Evans
 2200 Ford Rd
 Garden City, MI 48135
 (734) 423-4300
- NOVI**
Varsity
 4925 Grand River
 Novi, MI 48240
 (248) 488-9275 (6666)
- PLYMOUTH**
Hines Park
 4001 Ann Arbor Rd
 Plymouth, MI 48178
 (734) 850-5500
- ROCHESTER HILLS**
Crisman
 1815 South Rochester Rd
 Rochester Hills, MI 48315
 (248) 652-4700
- ROSEVILLE**
Arnold
 2900 Grand
 Roseville, MI 48069
 (810) 445-6000
- ROYAL OAK**
Diamond
 221 North Main Street
 Royal Oak, MI 48067
 (248) 541-8830
- SOUTHFIELD**
Star
 24350 West 12 Mile Rd
 Southfield, MI 48034
 (248) 354-9900
- SCOTTIGATE**
Siti Evans
 16850 Ford Street
 Scottigetate, MI 48054
 (734) 283-8800
- STERLING HEIGHTS**
Crest
 36200 West 13 Mile Rd
 Sterling Heights, MI 48310
 (810) 939-6000
- TROY**
Bob Boest
 1925 West Maple
 Troy, MI 48068
 (313) 493-0600
- WATERFORD**
Mel Farr
 4178 Highland Rd. 04-59
 Waterford, MI 48326
 (248) 643-9500
- YPSILANTI**
Sesi
 950 East Michigan
 Ypsilanti, MI 48197
 (734) 482-7133

