

LAUREN RALPH LAUREN

THE HOLIDAYS ARE UPON US. A TIME TO CASUALLY

REVISIT FAMILY AND FRIENDS. WHEN THE TIME ARRIVES, YOU WANT A **FESTIVE**

LOOK THAT'S IN FASHION AS WELL AS IN THE **SPIRIT**. LAUREN BY RALPH LAUREN

CAPTURES THIS FEELING WITH A COLLECTION OF WARM WINTER APPAREL. SHOWN: MICROFIBER

JACKET WITH FAUX FUR COLLAR. IN ECRU, SIZES 4-16, 198.00. COTTON SNOWFLAKE

TURTLENECK SWEATER IN WINTER CREAM, SIZES S-M-L, 108.00. WOOL FLANNEL PANT IN

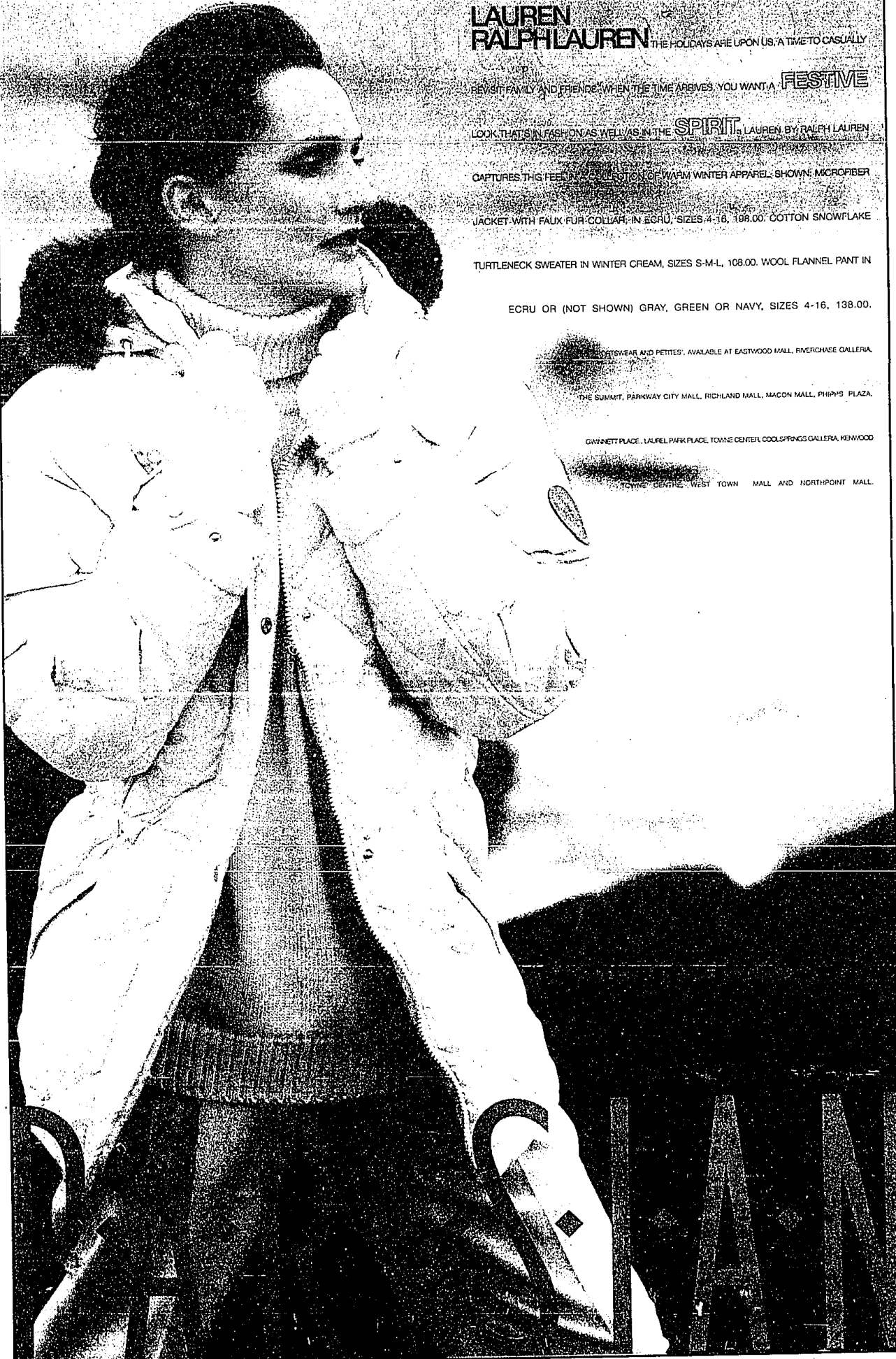
ECRU OR (NOT SHOWN) GRAY, GREEN OR NAVY, SIZES 4-16, 138.00.

...FITNESSWEAR AND PETITES. AVAILABLE AT EASTWOOD MALL, RIVERCHASE GALLERIA,

THE SUMMIT, PARKWAY CITY MALL, RICHLAND MALL, MACON MALL, PHIPPS PLAZA,

GWYNETH PLACE, LAUREL PARK PLACE, TOWNE CENTER, COOLSPRINGS GALLERIA, KENWOOD

TOWNE CENTER, WEST TOWN MALL AND NORTHPOINT MALL.



CALL 1-800-424-3185 TO ORDER ANYTIME. STORE HOURS: Laurel Park Place open Sun. 12-6, Mon.-Sat. 10-9.
FOR INFORMATION call 855-7500. CHARGE IT! Parisian Credit Card, MasterCard, Visa, the American Express® Card or Discover®.
LOCATED AT LAUREL PARK PLACE IN LIVONIA, CORNER OF NEWBURGH ROAD AND SIX MILE ROAD (TAKE THE SIX MILE ROAD EXIT OFF INTERSTATE 275).