

North Farmington's Percussion Ensemble to present concert with Steel Drum Band Jan. 23

The award-winning North Farmington High School Percussion Ensemble will present a concert at 7:30 p.m. Wednesday, Jan. 26 in the James P. Hunt Auditorium at North, joining the percussion ensemble will be the NFHS steel drum band, known for its performances at

prevent electric and gas utility shutoffs, and to buy perishable

food items. Donations of goods may be in the form of, non-per-

ishable food, paper goods (including disposable diapers), personal

care products (such as shampoo or soap), gently used children's

clothing, toys or household appliances.

COUNTY NEWS

numerous community events. Featured will be Pachelbel's "Canon in D" and "Tusk" (composed by David Jarvis), a contemporary piece using a broad range of percussive instrumentation to portray the story of an elephant hunt. Two seniors will make their conducting debuts at the concert: Percussion Overlord Rob Klegon with "Three Brothers," an intricate rhythmic piece, and Adam Casini with "Yoda's Theme" from "Star Wars."

One of the nation's premier high school percussion groups, the Percussion Ensemble has received top honors at national and international festivals, including last year's Heritage International Festival in Montreal, Canada.

Carl Gippert, director of instrumental music at North Farmington said, "The Farmington community is fortunate to have the unique opportunity to hear so many quality high school percussionists performing such a broad range of music. This will truly be a delightful concert, whether you are new to percussion ensemble music, or have been following it for a number of years."

Percussion ensemble music is both complex and varied, including a wide variety of drums and many other types of percussive instruments, from chimes to wood blocks.

Admission is by donation with all the proceeds after expenses going to the Farmington/Farmington Hills Neighborhood House. Started as the Farmington Emergency Fund by a group of public school employees, Neighborhood House now serves 100-plus needy families in the Farmington area.

Cash donations will be used to

OBITUARIES

DANIEL D. DAVID
Services for Daniel Donald David, 70, of Farmington, were held Jan. 14 at Heeneey-Sundquist Funeral Home in Farmington with the Rev. Edmund Ghizal officiating. Burial took place at Oakwood Cemetery in Farmington.

Mr. David was born Jan. 22, 1929, in Detroit and died Jan. 11 at Botsford General Hospital in Farmington Hills. He was the former owner of Mr. David's Menswear in Adrian.

He is survived by wife, Saidd; sons, Joseph (Sarah) and James; brothers, David and George; and sister, Julia David.

IDA M. ZURLA
Services for Ida Mary Zurla, 86, of Southfield, were held Jan. 14 at Flayer-Rock Funeral Home in Farmington with the Rev. Leonard Cornelius officiating. Burial took place at Holy Sepulchre Cemetery in Southfield.

Mrs. Zurla was born April 4, 1914, in Pennsylvania and died Jan. 10 in Southfield. She was a homemaker and a member of St. Michael Catholic Church in Southfield. She enjoyed cooking.

She is survived by son, Daniel; sister, Ethel Sella; four grandchildren; and one great-grandchild. She was preceded in death by her husband, Edward; son, Raymond; and daughter, Sylvia.

Memorial contributions can be made to the Michigan Diabetes Association.

MARIE H. SQUAIR
Services for Marie H. Squair, 85, formerly of Farmington Hills, were held Jan. 13 at Good Shepherd Primitive Baptist Church with the Rev. Kenneth Wilson and Rev. Otis Buell officiating. Burial took place at Holy Sepulchre Cemetery in Southfield.

Mrs. Squair was born Dec. 28, 1914, in Newport, Mich., and died Jan. 11 at Henry Ford Hospital. She was a homemaker and a member of Good Shepherd Primitive Baptist Church. She enjoyed gardening and reading.

She is survived by son, James; daughters, Diane Wilson, Kathleen Hickman and Jannette Zaffroff; Lila Trevarthen, Violet Koivunen and Elma Trevarthon; 13 grandchildren; and 10 great-grandchildren. She was preceded in death by her husband, Joseph.

Memorial contributions can be made to Good Shepherd Primitive Baptist Church.

\$30 CASH BACK *OR* \$100 CASH BACK

By mail with purchase and activation of any Sprint PCS phone

PLUS

500 Minutes

Including Free Long Distance for \$50 per Month

Access e-mail and Internet information anywhere you use your Sprint PCS wireless phone! Browse text versions of web sites such as Amazon.com, CNN Mobile™, Yahoo!®, and Bloomberg, to buy real stocks, access news, weather, and sports updates, and much more.

Free e-mail

Sprint. Sprint PCS®
The Clear Alternative to Cellular™

99.99
After Mail-In Rebate

129.99
30.00 Sprint PCS phone
99.99 After Mail-In Rebate

69.99
After Mail-In Rebate

99.99
30.00 Sprint PCS phone
69.99 After Mail-In Rebate

NOKIA
Communications

- Store up to 100 names and numbers
- Large backlit screen with numeric page
- One button "Hot" Key operation (\$170)

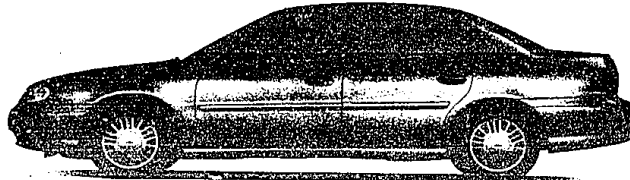
QUALCOMM

- Wireless Web™ ready
- Email ready
- Dual mode: works in PCS and analog areas
- Light weight and ultra-thin (10CF-1780)

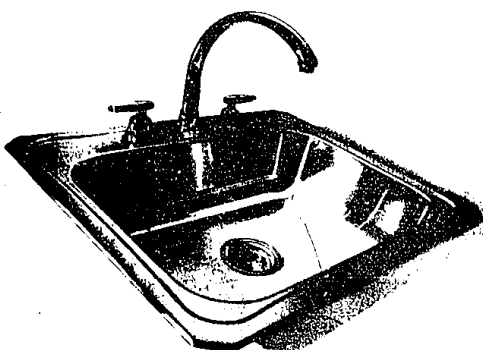
BEST BUY

Turn On the Fun™

*Example based on survey. Each dealer sets its own price. Your payments may vary. Malibu payments are for 2000 Malibu with MSRP of \$17,215; 36 monthly payments total \$7,524. Option to purchase at lease end for an amount to be determined at lease signing. GMAC must approve lease. Available only to residents of MI, MN, WI and select counties in IL, IN, IA, KY, MO, NE, NY, ND, OH, PA, SD and WV. You must take retail delivery from participating dealer stock by 4/3/00. Mileage charge of \$.20/mile over 36,000 miles. Lessee pays for maintenance, repair and excess wear. If lease terminates early, lessee is liable for all unpaid monthly payments. Payments may be higher in some states. Not available with customer cash offers.



Everything but.



As low as
209 a Month
36-Month Lease
*1,400 Down Payment
*209 1st Month Payment
*225 Security Deposit
*1,834 Due at Lease Signing
(Tax, title, license and registration are extra.)

GM® Employees
199 a Month
36-Month Lease
*725 Down Payment
*199 1st Month Payment
*225 Security Deposit
*1,149 Due at Lease Signing
(Tax, title, license and registration are extra.)

Chances are — if you want it, Malibu's got it. It's the lowest-priced car with standard V6, automatic, air conditioning and ABS.* Chevy Malibu. Standards you can depend on.



SEE YOUR CHEVROLET® DEALER.

*Example based on survey. Each dealer sets its own price. Your payments may vary. Malibu payments are for 2000 Malibu with MSRP of \$17,215; 36 monthly payments total \$7,524. Option to purchase at lease end for an amount to be determined at lease signing. GMAC must approve lease. Available only to residents of MI, MN, WI and select counties in IL, IN, IA, KY, MO, NE, NY, ND, OH, PA, SD and WV. You must take retail delivery from participating dealer stock by 4/3/00. Mileage charge of \$.20/mile over 36,000 miles. Lessee pays for maintenance, repair and excess wear. If lease terminates early, lessee is liable for all unpaid monthly payments. Payments may be higher in some states. Not available with customer cash offers.

†Available only to qualifying GM Employees and eligible family members who are residents of MI, MN, WI and select counties in IL, IN, IA, KY, MO, NE, NY, ND, OH, PA, SD and WV. Malibu payments are for 2000 Chevrolet Malibu with MSRP of \$17,215; 36 monthly payments total \$7,164. Option to purchase at lease end for an amount to be determined at lease signing. GMAC must approve lease. You must take retail delivery from participating dealer stock by 4/3/00. Mileage charge of \$.20/mile over 36,000 miles. Lessee pays for maintenance, repair and excess wear. If lease terminates early, lessee is liable for all unpaid monthly payments. Payments may be higher in some states. Not available with customer cash offers. All current GM-S program rules and restrictions apply.

**Based on MSRP comparisons. Level of equipment varies. Malibu is a registered trademark and Chevy is a trademark of the GM Corp. ©2000 GM Corp. Buckle up, America! 1-800-950-2438 or www.chevrolet.com/malibu