

# Here comes the bride

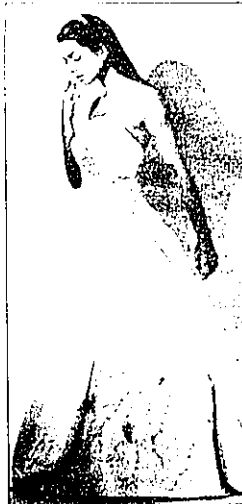


**Satin strapless:** (left) A stylish mix of classic and contemporary design, this ivory silk satin strapless bodice and attached narrow, silk satin skirt with an English net overlay, is finely embellished with hand-beaded alençon lace. Available at Elizabeth's Bridal Manor, Northville.



STAFF PHOTO BY JERRY ZOJANSKY

**Stately bride:** (right) Judd Waddell white strapless silk satin ballgown and headpiece from Alvin's Bride. White pearls, diamond and white pearl earrings and diamond ring from Tiffany & Co., Somerset Collection, Troy. Bouquet from Marley's Florist, Birmingham. Photographed at the Townsend Hotel in Birmingham.



**Backless beauty:** Wedding gowns by Yolanda Couture (left) and Lazaro (right) available at Elizabeth's Bridal Manor in Northville.



We invite you to come in and meet with our staff to discuss your specific needs. The Townsend Bakery can provide your party with memorable sweet tables and delicious desserts.

*The Townsend Hotel Bakery*



175 Merrill Street • Birmingham, MI  
248-644-6806 • Fax: 248-644-3637

Put a  
Ring on Her  
Finger...



Always in Fashion at...

**Fredrick Jewelers**

869 W. Long Lake Rd. • Bloomfield Hills • 248-646-0973  
Hours: Mon.-Wed. & Fri. 10-5:30, Th. 10-7, Sat. 10-4

Continued