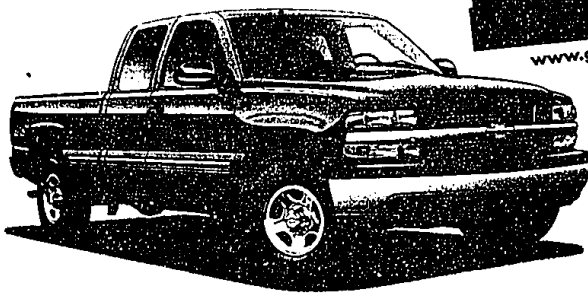


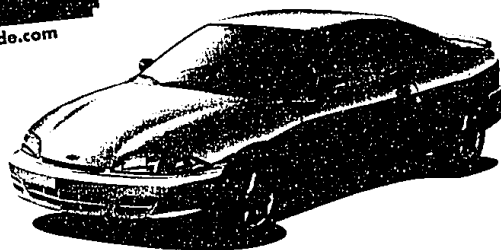
CHEVROLET HAS YOUR TICKET TO RIDE.



2000 CHEVY™ SILVERADO® 3-DOOR EXTENDED CAB

\$500 + \$1,000 = \$1,500 TOTAL CASH BACK¹

Available air conditioning, standard 4-wheel ABS, biggest half-ton Extended Cab²



2000 Chevy Cavalier®

\$1,500 + \$500 = \$2,000 TOTAL CASH BACK¹

Lowest priced car with standard 4-wheel ABS and air conditioning; EPA estimated MPG of 24 City, 34 Highway³



2000 Chevy Blazer® 4-Door

\$2,000 + \$500 = \$2,500 TOTAL CASH BACK¹

CURRENT BLAZER LESSEES ONLY⁴

LS 4-DOOR 4WD

AS LOW AS

\$284 A MONTH⁵

36-month lease

\$2,209 Due at lease signing

-\$500 Bonus Cash

\$1,709 Cash due at lease signing

AFTER LEASE LOYALTY OFFER.
INCLUDES SECURITY DEPOSIT.
(TAX, TITLE AND LICENSE ARE EXTRA)

CURRENT GM Employee and eligible family member Blazer lessees only⁴

LS 4-DOOR 4WD

AS LOW AS

\$249 A MONTH⁵

36-month lease

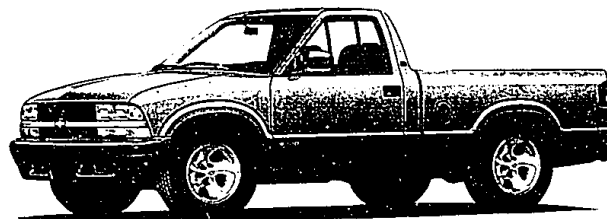
\$1,774 Due at lease signing

-\$500 Bonus Cash

\$1,274 Cash due at lease signing

AFTER LEASE LOYALTY OFFER.
INCLUDES SECURITY DEPOSIT.
(TAX, TITLE AND LICENSE ARE EXTRA)

Air conditioning, standard 4-wheel ABS, steel-ladder frame



2000 Chevy S-10®

\$1,500 CASH BACK + \$500 BONUS CASH = \$2,000 TOTAL CASH BACK¹

Current GM Employees and eligible family members can get an additional

\$750 EMPLOYEE CASH BACK⁶

OR

Current GM Employees and eligible family members

2WD Regular Cab

AS LOW AS

\$181 A MONTH⁵

36-month lease

\$406 Due at lease signing

INCLUDES SECURITY DEPOSIT

(TAX, TITLE AND LICENSE ARE EXTRA)

2WD Regular Cab

AS LOW AS

\$154 A MONTH⁵

36-month lease

\$904 Due at lease signing

-\$750 Employee Bonus Cash

\$154 Cash due at lease signing

NO SECURITY DEPOSIT REQUIRED

(TAX, TITLE AND LICENSE ARE EXTRA)

Available air conditioning and tinted windows, standard 4-wheel ABS, EPA Estimated MPG of 19 City, 26 Highway³

ATTENTION CURRENT SMARTLEASE LESSEES!

If your SmartLease terminates between August 1st and October 31st, 2000, you may qualify for a special early lease termination offer.

You must return leased vehicle and take retail delivery of a new GM vehicle from participating dealer stock by 7/31/00. Excludes Saab, Saturn, Hummer and electric vehicles. See dealer for details.

*Based on overall exterior cab dimensions. Excludes other GM vehicles. ¹Based on MSRP comparisons. ²Based on 2000 EPA estimates with a standard 2.2 Liter engine and standard 5-speed manual transmission. ³Based on 2000 EPA estimates with a standard 2.2 Liter engine and available 4-speed automatic transmission. ⁴Blazer cash back available only to residents of AL, MN, WI and select counties in IL, IN, IA, KY, MO, NE, NY, ND, OH, PA, SD, and WV. You must take delivery from participating dealer stock by 6/30/00 for Blazer and 7/4/00 for all other vehicles. Not available with special GMAC finance or lease offers. ⁵Available only to qualifying GM Employees and eligible family members who are residents of AL, MN, WI and select counties in IL, IN, IA, KY, MO, NE, NY, ND, OH, PA, SD, and WV. You must take delivery from participating dealer stock by 6/30/00 for Blazer and 7/4/00 for all other vehicles. Not available with special GMAC finance or lease offers. All current GM-S program rules and restrictions apply. ⁶Blazer Lease Loyalty Certificate or proof of qualifying Blazer lease contract required. Offer is nontransferable and not redeemable for cash. One loyalty offer per lease. Other limitations apply. See dealer for details. ⁷Example based on survey. Each dealer sets its own price. Your payments may vary. S-10 payments are for 2000 Chevy S-10 Regular Cab 2WD with MSRP of \$15,419. 36 monthly payments total \$8,516. Blazer payments are for 2000 Chevy Blazer 4-Door 4WD with MSRP of \$28,895. 36 monthly payments total \$10,224. Option to purchase at lease end for an amount to be determined at lease signing. GMAC must approve lease. Available only to residents of AL, MN, WI and select counties in IL, IN, IA, KY, MO, NE, NY, ND, OH, PA, SD, and WV. You must take retail delivery from participating dealer stock by 6/30/00 for Blazer and 7/18/00 for S-10. Mileage charge of \$.20 per mile over 36,000 miles. Lessee pays for maintenance, repair and excess wear. If lease terminates early, lessee is liable for all unpaid monthly payments. Payments may be higher in some states. Not available with customer cash offers. ⁸Available only to qualifying GM Employees and eligible family members who are residents of AL, MN, WI and select counties in IL, IN, IA, KY, MO, NE, NY, ND, OH, PA, SD, and WV. S-10 payments are for 2000 Chevy S-10 Regular Cab 2WD with MSRP of \$15,419. 36 monthly payments total \$8,544. Blazer payments are for 2000 Chevy Blazer 4-Door 4WD with MSRP of \$28,895. 36 monthly payments total \$10,224. Option to purchase at lease end for an amount to be determined at lease signing. GMAC must approve lease. You must take retail delivery from participating dealer stock by 6/30/00 for Blazer and 7/18/00 for S-10. Mileage charge of \$.20 per mile over 36,000 miles. Lessee pays for maintenance, repair and excess wear. If lease terminates early, lessee is liable for all unpaid monthly payments. Payments may be higher in some states. Not available with customer cash offers. All current GM-S program rules and restrictions apply. ⁹TICKET TO RIDE is a registered trademark of Chilton Companies LLC. Used with permission. ©2000 GM Corp. Buckle up, America! ® 1-800-950-2438 or chevrolet.com

CHEVROLET



See Your Local Chevrolet Dealer Today.