

Scouts dedicate new Kensington trail

On Saturday, Oct. 20, Boy Scout Troop 110 of Farmington hiked the new Orange Trail, the

most recent addition to the historic Chief Pontiac Trail system in Kensington Metropark.

The trail begins near the Kensington Farm Center at a trail marker showing a profile of

Chief Pontiac. Sixty-five scouts made the trek.

Troop Scoutmaster Brad Smith was instrumental in developing and executing the project. More than 580 man hours went into blazing this new trail which involves tagging trees, hacking through dense bushes, clearing underbrush, removing rocks and stumps and adding new trail markers. The troop from Our Lady of Sorrows took one year to complete the project and spawned one Eagle Scout project: an 85-foot boardwalk that spans a creek.

A ribbon cutting ceremony took place just before the maiden hike. Reports were given by Scouts describing the life of Chief Pontiac, a history of the trail and information about Kensington Metropark. There was also a trail blessing to officially dedicate the trail.

Fifteen guests attended including Dick Shaffer, Kensington Park superintendent and Dick Russell, chairman of the Chief Pontiac Trail committee.

"Troop 110 is very proud to have been part of this history making new trail that will benefit both Scouts and the community," said Susan Ehrlich, a spokeswoman for the Farmington troop.



Orange Trail: Dick Russell, chairman of the Chief Pontiac Trail committee; Collin Work, senior patrol leader; Dick Shaffer, Kensington Park superintendent; and Brad Smith, Scoutmaster.

Mercy High School celebrates French culture

Mercy High School is celebrating National French Week this week. On Tuesday, French students hosted a French cabaret, Le Club Paradis. Activities were planned by la Societe Honoraire.

THE QUILT FREE SHOPPING SPREE

Imagine buying what you want, Whenever you want, At a fraction of the price...

Visit a Salvation Army Store in your neighborhood.



8033 Highland Road
WHITE LAKE
Monday-Saturday 10-6

2133 Orchard Lake
SYLVAN LAKE
Monday-Saturday 10-6

823 E. Auburn Road
ROCHESTER HILLS
Monday-Saturday 9-9

605 S. Opyke
AUBURN HILLS
Monday-Saturday 9-9

20335 Greenfield
SOUTHFIELD
Monday-Saturday 9-9

We Accept Visa & Mastercard
Your Purchase Helps Us, Helps Others!



2002 Mercury Mountaineer

Visit Your Metro Detroit Mercury Dealer:

ANN ARBOR
Sesi
2100 W. Sibley Blvd.
Ann Arbor, MI 48106
(734) 668-6100
sesi.com

CLINTON TOWNSHIP
Stu Evans Lakeside
17500 Hall Rd.
Clinton Twp., MI 48035
(810) 840-2000
stuevanslakeside.com

DEARBORN
Jack Demmer
21531 Michigan Ave.
Dearborn, MI 48124
(313) 276-8800
demmer.com

DETROIT
Bob Maxey
10901 Mack Ave.
Detroit, MI 48217
(313) 885-4000
bobmaxey.com

DETROIT
Park Motor
18100 Woodward Ave.
Detroit, MI 48240
(313) 859-5000
parkmotor.com

GARDEN CITY
Stu Evans Garden City
32000 Ford Rd.
Garden City, MI 48135
(734) 425-4300
stuevansgarden.com

HONOLULU
Varsity
49231 Grand River
Honolulu, HI 96815
(808) 850-1600 (6084)
varsity.com

PLYMOUTH
Hines Park
40601 Ann Arbor Rd.
Plymouth, MI 48175
1-800-556-MERC
hinespark.com

ROCHESTER HILLS
Crissman
1185 South Rochester Rd.
Rochester Hills, MI 48065
(248) 652-4200
crissman.com

ROSELAND
Bob Maxey
29000 Crisfield
Rosedale, MI 48068
(810) 557-6000
bobmaxey.com

SOUTHFIELD
Star
24350 West 12 Mile Rd.
Southfield, MI 48034
(248) 314-4900
star.com

SOUTHGATE
Southgate
16800 Fort Street
Southgate, MI 48078
(734) 285-8800
southgate.com

STERLING HEIGHTS
Crest
36300 Van Dyke
Sterling Heights, MI 48309
(810) 939-6000
crest.com

TROY
Bob Borst
19510 West Maple
Troy, MI 48068
(248) 643-6600
borst.com

WATERBURY
Mel Fatt
4178 Highland Rd. (M-59)
Waterbury, MI 48329
(248) 683-9500
fatt.com

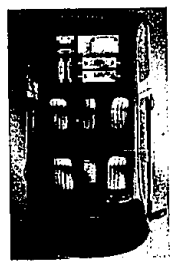
YPSILANTI
Seal
990 East Michigan
Ypsilanti, MI 48197
(734) 482-7133
seal.com

THE THIRD-ROW SEATING IS NOT AN OPTION. (IT'S STANDARD.)

INTRODUCING A LUXURY-LOADED OFFER ON A MERCURY MOUNTAINEER WITH CONVENIENCE GROUP.

\$399
per mo./24-month lease for returning lessees
\$2,999*
cash due at signing after \$1,000 cash back
Security deposit waived. Excludes tax, title and license fees

OR **0.0%** APR
limited-term financing** on every 2002 Mercury purchase.



DISAPPEARING THIRD-ROW SEAT STANDARD.

The Mountaineer's third-row seat folds down easily, virtually disappearing to create up to 81.3 cubic feet of cargo space.



For updated offers go to LMAplan.com

*Call 1-888-6-LEASE for details. For cash back, take new retail delivery from dealer stock by 1/24/2002.
**NOT ALL BUYERS WILL QUALIFY FOR THE LOWEST FORD CREDIT APR. SEE DEALER FOR QUALIFICATION DETAILS. Dealer participation may affect savings.
For APR, take new retail delivery from dealer stock by 11/20/2001.