

GMC tailors trucks to meet customer wants and needs

In its 100th year producing trucks and only trucks, GMC's professional grade lineup in 2002 features all-new Envoy five and seven-passenger XL models, and the truck industry's first all-wheel-steering system, introduced exclusively on the Sierra Denali.

Envoy

Available in spring 2002, the seven-passenger Envoy XL further supports the comfort of the Envoy by adding seven-passenger roominess to the performance features of the Envoy lineup.

Envoy and Envoy XL are larger, inside and out, than their predecessor and feature all-new, special exterior styling, an advanced, totally new 270-horsepower Vortec 4200 inline six-cylinder engine, and the smooth, comfortable ride of an all-new suspension system.

Along with a list of 40 key standard features, Envoy now offers an industry-first, optional factory-installed rear seat DVD entertainment system.

Sierra

In 2002, the Sierra brand introduces the Sierra Denali. Sierra Denali adopts Delphi Automotive Systems' QuadraSteer as standard equipment. This 4-Wheel Steering technology provides carlike low-speed maneuverability and high-speed stability, handling and control with or without a trailer. Sierra Denali has a 300-horsepower, 6.0-liter V8 engine and AWD.

At mid-year, light- and heavy-duty Sierra lineups also add new highly focused and purposeful Sierra Professional extended cab models. The interior is highlighted by a full-length, multi-functional, custom-designed center console, extending from the instrument panel to the back of the front seats, along with a special, rear under-seat storage system.

All models also feature equipment changes, which tailor the trucks more closely to customers' wants and needs. And the Sierra heavy-duty pickups and chassis provide

additional low vehicle emissions compliance, extending availability of the gasoline and diesel V8 engines, the Vortec 8100 and Duramax 6600, in California applications.

The 2002 Sierra will offer alternative fuel models that can be ordered either with bi-fuel capability or as a dedicated compressed natural gas vehicle.

Yukon/Yukon XL and Yukon Denali/ Yukon XL Denali Yukon and Yukon XL provide surprising agility in full-size SUVs.

The standard Vortec 6000 and optional Vortec 8100 V-8 engines of the Yukon XL 3/4-ton models now mate to more durable transmissions, including a new 4L85-E version of the 4L80-E electronic four-speed automatic, which also provides more torque capacity for off-line acceleration and pulling power.

Also new for 2002, models powered by the 285-horsepower 5.3-liter V8 engine are capable of running on any combination of conventional gasoline and ethanol (E85) as a standard feature. All four full-size flexible fuel SUVs are available as either two- or four-wheel-drive models.

All GMC full-size SUVs, including Yukon Denali and Yukon XL Denali, have the added safety of a new lower-anchor-and-top-tether attachments for rear child seats.

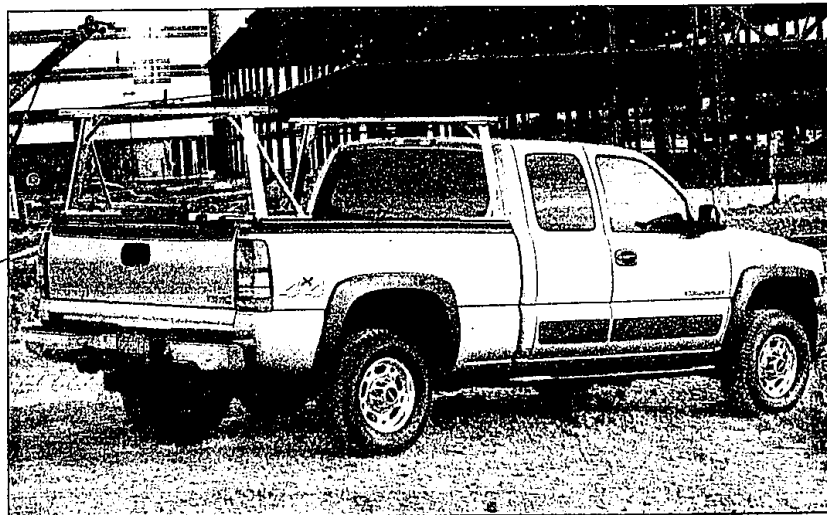
Savana

The 2002 Savana continues to provide incomparable people- and cargo-carrying capability, along with the segment's lowest step-in height, widest rear door openings and most powerful gasoline engine, the Vortec 8100 Big Block V8.

A new 1500 Series Savana SLT model, introduced in spring 2001, creates living room style comfort and luxury, with its first class Bose entertainment system, luxurious seating for seven and other amenities.

Safari

Longer lasting, smoother performance is provided by



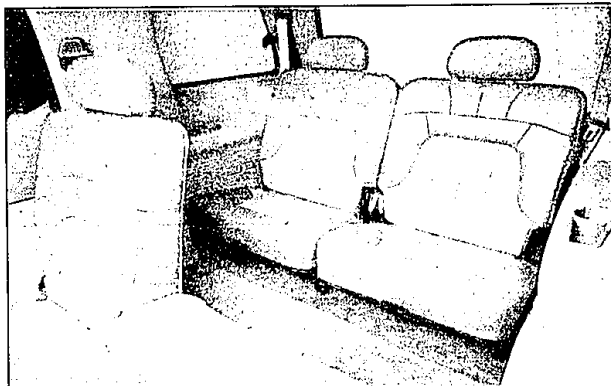
Professional: The Sierra Professional extended cab model joins GMC's light- and heavy-duty Sierra lineups.

upgrades to the 2002 Safari's standard powertrain, exhaust system and rear axle. Safari's 190-horsepower Vortec 4300 V6 is the largest displacement engine in its class. The 2002 Safari has eight-passenger roominess and true-truck capabilities.

Sonoma

A more focused lineup, simpler selection of trim levels and a higher level of standard equipment enhance the value and provide easier selectivity for the 2002 Sonoma compact pickup. Sonoma continues to be led by its spacious, comfortable five-passenger Crew Cab.

A third door is now standard on extended cab models, and air conditioning and a tachometer are standard on all (non-fleet) models, as part of the equipment upgrades. The 2WD regular cab long bed model is discontinued.



In the Envoy: GMC's Envoy is larger than its predecessor, inside and out, and features all-new, special exterior/interior styling.

Oldsmobile from page 4

wheels, a rear decklid spoiler, and a leather-wrapped steering wheel. The five-speed manual continues to be available with the GL2 Sport Model.

Aurora

Aurora, Oldsmobile's flagship model, has represented innovation and change for the division since it debuted in 1994. In 2001, the second-generation model arrived, and with it came a lighter, sleeker exterior shape; two lighter, more efficient engines; and OnStar, GM's mobile communications service, as standard equipment.

For 2002, the primary improvement is a new navigation radio option. Now there are three radio options: the standard premium radio, the Bose sound system, and the navigation radio.

Navigation radio is a supplement to OnStar that provides drivers with detailed routes from coast to coast. Drivers who choose navigation radio receive two CD-ROMs: one that includes maps of all the major highways and roads throughout the United States and one that is specific to their region. Buyers can purchase additional CDs that cover the other regions through their dealer.

All drivers need to do to calculate a route is insert the navigation CD and enter the address on the system's screen. Drivers view the CD maps on a display screen in the vehicle, and audio commands give drivers step-by-step instructions in English, French or Spanish. The verbal commands tell drivers when to turn, alert them if they stray from the calculated route, and the system automatically recalculates a new route from their current position if they make a wrong turn.

Additionally, drivers can instruct the navigation system to plan a route using the shortest path or one using major roads. When navigating, drivers can listen to the radio or music CDs played on the trunk-mounted 12-disc changer, which is specified on all navigation vehicles. When not navigating, drivers can play music CDs in the radio.

For 2002, chrome-exhaust tips replace black tips, and two new exterior colors, granite and marine blue, debut.

Aurora has two powerful engines: the 4.0L DOHC V8 and the award-winning 3.6L DOHC V6. In 2001, the 4.0 was completely redesigned for better fuel economy, better sound quality and lower emissions. It produces 260 horsepower at 6000 rpm and torque tops out at 260 lb.-ft. at 4,400 rpm, with 90 percent of peak torque on the ground between 2300 and 5600 rpm.

The 3.6L is based on the 4.0L. Its dual overhead cam, 24-valve design offers state-of-the-art efficiency and performance. It has a long stroke design and the latest combustion technology to deliver high-end output and exceptional low-end torque. Power is rated at 216 horsepower at 5,600 rpm, with peak torque of 234 lb.-ft. at 4,400 rpm.

LES STANFORD VAN CENTER

GM OVERDRIVE

5.9% & 2002 REBATE on all vehicles



2002 Full Size Express High Top Conversion

\$25,688

— rebate **\$2002**

Now \$23,686

GM Employees Save Even More!



2002 Express Cargo Van

\$19,664

— rebate **\$2002**

Now \$17,662

GM Employees Save Even More!

2002 Full Size Express Conversion

\$24,610

— rebate **\$2002**

Now \$22,608

GM Employees Save Even More!



4 Captains chairs, 4.3L engine, sofa bed, power windows & locks, cruise, tilt. Stock #2110

5.9% Financing

2002 Astro Cargo Van

\$20,201

— rebate **\$2002**

Now \$18,199

GM Employees Save Even More!



5600 GVW 4.3 engine, air conditioning, tilt, cruise, rear door glass. Stock #2127

5.9% Financing

LES STANFORD VAN CONVERSION CENTER 313-565-6000

21730 MICHIGAN AVENUE • DEARBORN, BETWEEN TELEGRAPH ROAD & SOUTHFIELD LANE, (1000.690.VETT) (TOLL FREE) MON. & THURS. 9:30-9; TUES., WED., THU. 9:30-6

