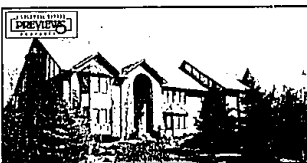


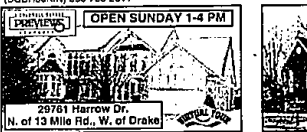
COLDWELL BANKER SCHWEITZER REAL ESTATE



BLOOMFIELD HILLS
Magnificent Bloomfield Hills Colonial 7,300 sq. ft. on 1.5 acre. Gourmet kitchen, granite & hardwood floors. Huge master suite, high ceilings, granite & marble w/whirlpool tub, master bedroom & spa in w/o dam. 6th schools BGWB-21 CHA 888-224-2447



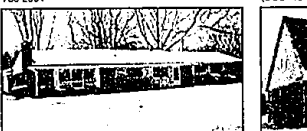
OAKLAND
Kings Pointe Perfection. Fabulous Mowbray-built colonial. Tastefully decorated, 5 bedrooms. Formal living room, dining room. Huge finished w/o basement w/whirlpool tub, kitchen, bath and 2 B.R.s. Pool. (BGBHSOKIN) 866-768-2011



FARMINGTON HILLS
Immaculate Custom Built Colonial, 4 BR 2.5 BA, 2 story marble foyer. State of the art kitchen, vaulted ceilings, w/o w/whirlpool tub, granite master suite, private bath w/jacuzzi. Florida rm & private backyard. BGWB-51HAR Dr. N. of 13 Mile Rd., W. of Drake 888-224-2447



BLOOMFIELD TOWNSHIP
Great Opportunity for the first upper. 1.38 acres in area of much more expensive homes. Near Oakdale park & 6th schools. Floor plan is terrific. Just bring your paint brush & garden tools. BGWB5MEA 866-768-2004



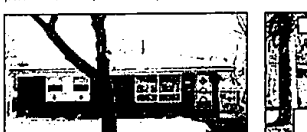
BLOOMFIELD
Renovated Ranch. Four bedrooms, two-and-a-half baths with new white kitchen, carpet, paint, and more. Two fireplaces, family room, two car garage, and large yard. (BGBHI2HAD) 866-768-2011



WEST BLOOMFIELD
Charming and Well Maintained. 4 BR colonial nestled on 1 acre. Kitchen redone with ceramic counters. All bedrooms with hardwood floors. Large family room with fireplace. BGWB-51GR 888-224-2447



WEST BLOOMFIELD
You Won't Be Disappointed! Meticulously maintained and updated upper ranch and unit. Soaring ceilings, recessed lights, and custom California walk-in closet - just to name a few. (BGBHI1BRV) 866-768-2011



ROYAL OAK
A Pleasure To See! Move right into this lovely brick ranch with newly finished bsmt, deck & 2.5 car garage. Updates include bath, carpet, windows, furnace, a/c, roof, kitchen & downspout! OAE12WIM 888-224-2329



WEST BLOOMFIELD
Spectacular Custom Contemporary on Pine Lake. Large foyer open to 2 story great room with windows overlooking tranquil lake. Extensive use of granite. Gourmet kitchen, luxurious master & more. (BGBHSINT) 866-768-2004



WEST BLOOMFIELD
160 feet of Cass Lake front. Permanent dock for 3 boats & 25-25' sundeck on the water. Marsh bank bay & wildlife preserve will never obstruct the westerly sunsets from your view. (BGB76LAR) 866-768-2004



COMMERCE TWP
Super sharp end unit condo. 2 bedrooms 2 baths. Top of the line appliances. Upgrades w/ washer & dryer in unit. Crown moldings, balcony & recessed lighting. Great location. Walk to over! (BGB44CHE) 866-768-2004



BIRMINGHAM
Super sharp end unit condo. 2 bedrooms 2 baths. Top of the line appliances. Upgrades w/ washer & dryer in unit. Crown moldings, balcony & recessed lighting. Great location. Walk to over! (BGB44CHE) 866-768-2004



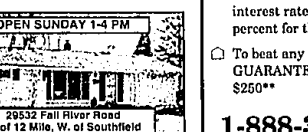
STERLING HEIGHTS
New Construction. Sharp split level includes all carpeting. 1st flr MSTR suite w/2 WIC's/Whirlpool tub & stall shower-Marble faced gas FP-Cathedral GR & 2 sty foyer-HWD foyer/kitchen. OAE48NIC 888-224-2329



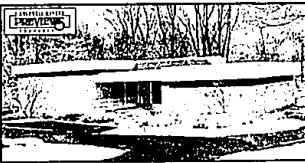
WHITE LAKE
Newer Home. Custom built home, wooded lot. 3.5 car garage, cathedral ceilings in foyer, great room, and dining room. Custom kitchen w/granite lighted nook. Full basement. Must see. (BGBHI1OXH) 866-768-2011



SOUTHFIELD
Better Than Now! Spacious ranch on nearly 1 acre lot is only 3 years old. Neutral decor w/o. Huge Drt rm w/walk in to private fenced yard. Appl day Mstr ste w/private Ba (BGWB-5VAN) 888-224-2447



SOUTHFIELD
Charming Three Bedroom. Ranch w/recessed lighting and hardwood floors. Now windows in 2002, freshly painted outside in 2001. Large finished basement w/bar great for entertaining. Large yard. (BGB32FA) 866-768-2011



BLOOMFIELD HILLS
One Of A Kind. Custom contemporary on 1.5 acres. 7,200 square feet of glass and soaring ceilings with incredible vistas. Indoor pool with spa. Nature and living at its best. (BGBHSWHY) 866-768-2011



WEST BLOOMFIELD
Most Fabulous Lot. In entire sub overlooking pond & nature preserve. 10' cast concrete, w/o lower mt, screened porch, cedar decking, super landscaping, paver patios, 4 bdrms & beautiful thru-out. (BGB46BRA) 866-768-2004



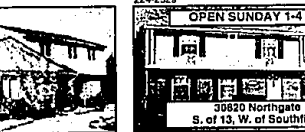
FARMINGTON HILLS
Back to Back. Gorgeous brick w/2 story foyer. Hardwired, gourmet kitchen w/corridor island & appliances. Family rm w/marble top & 2 story ceiling. Stupor mstr, 2 closets & jacuzzi tub BGWB-55HAM 888-224-2447



BLOOMFIELD
Brick Ranch on Near Acre Lot. Over \$60,000 in updates over past 10 years. Open plan, 11 wimany windows. Neutral & tasteful on .93 acre elevated lot. Great sub wlg lots & rolling terrain. Poss. 3rd gar. (BGB4XEL) 866-768-2004



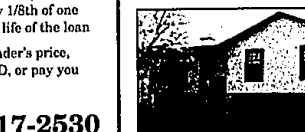
TROY
Wonderful Family Home. Light, bright & neutral. Hardwood on all carpeting. 2 story marble foyer. 4 BR, 2.5 baths. Bonus wet bar. Family rm w/FP. Lovely treed lot. Award winning schools. Must see. (BGB5AHE) 866-768-2004



WEST BLOOMFIELD
Very Private. Beautifully decorated w/updated kitchen, newer CIA, roof, finished bsmt, newer wall, resurfaced driveway, rebuilt FP, Berber carpet, tiled kitchen. The list goes on and on! OAE9HIL 888-224-2329



SOUTHFIELD
Looking for 4 BR Colonial. w/Birmingham Schools? Look no more. Ready for transferees. Easy move in includes appliances in semi-updated home. One year warranty. Must have pre-approval with offer. (BGB3ONOR) 866-768-2004



TROY
Exceptional Detached Condo. Lovely marble entry foyer, newer interior doors, updated kitchen w/Pergo flr & newer appliances. Updated baths. Inviting FR w/FP, 2 car garage. Home warranty. A beauty! OAE3OROU 888-224-2329



TROY
Exquisite Home w/Bloomfield schools. Newly built w/o detail left untouched. Cherry kb, gourmet kit overlooking paver patio. Fin. daylt LL w/kl, wet bar, BR, bit-in video area & more. BGB49VIN 866-768-2004



BIRMINGHAM
Quinton Lake Estates Colonial, with 3 bedrooms, 3.5 baths. Finished basement. 3 season porch leads to fire form pool & deep backyard. Walk to town, school & market. Great home for entertaining. (BGB87FA) 866-768-2004



BIRMINGHAM
Rare Opportunity! New construction w/outstanding quality. Cedar exterior, granite, hardwood, 2 way fireplace, drywalled basement, whirlpool, crown moldings. 2 car garage. Walk to shops. WOW! (BGB6HOL) 866-768-2004



TROY
Charming 4 Bedroom Ranch. Enhanced in '85 w/ great family room & master suite. Newer oak kitchen & most windows are thermal. New roof in 2001. Includes appliances & w/o. Berneham schools. (BGB35AYD) Dr. S. of W. of Adams 866-768-2004



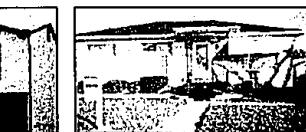
BIRMINGHAM
Perfectly Ready. Mint condition brick 3 bedroom, 2 bath home. Walking distance to downtown. Full part. Finished basement. 2 car garage. Wonderfully updated & super clean. PRICE REDUCED! (BGB7EBAT) 866-768-2004



BIRMINGHAM
Charming End Unit. Private entry condo. Exterior has been renovated. Two bedrooms, one bath, many windows, updates, bright and cheery. Walk to downtown Birmingham. (BGBHI1OLD) 866-768-2011



KEEGO HARBOR
All Sports Cass Lake Walk to beach & park! Built in '88. Open floor plan, oak kitchen cabinets, ceramic tile, berber carpet, West Bloomfield schools. 2 car garage. Deck! (BGB4OBRO) 866-768-2004



OAK PARK
Great Family Home. This sharp 3 BR ranch features include: new windows, ceiling, & light fixture in family room. Exterior doors, landscaping and much more. Won't last! BGWB-00SCO 888-224-2447

COLDWELL BANKER MORTGAGE

Phone In, Move In...

- ☐ A same-day mortgage decision or we'll pay you \$250*
- ☐ To meet your requested closing date or we'll reduce your interest rate by 1/8th of one percent for the life of the loan
- ☐ To beat any lender's price, GUARANTEED, or pay you \$250**

1-888-317-2530

Financing provided by Coldwell Banker Mortgage, 3000 Leanderhall Road, Mt. Laurel, NJ 08054. *Some restrictions apply. **Subject to verification of lender's price and other restrictions. Please contact us for details.

**Birmingham - 248-642-2400 • Bloomfield Hills - 248-646-1800
Farm. Hills/W. Blmfd - 248-737-9000 • Troy - 248-879-3400**

• Ann Arbor • Birmingham • Bloomfield Hills • Clarkston • Farm. Hills/W. Blmfd • Grosse Pointe Hill
• Grosse Pointe Woods • Lakes • Livonia • The Macomb Center • Northville • Plymouth • South Lyon • Troy

For more properties visit our website at:
www.cbschweitzer.com

