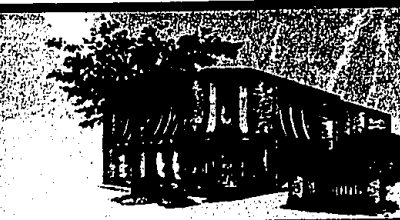


Hall & Hunter

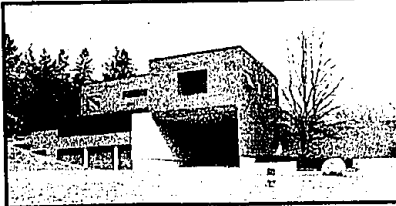
REALTORS

248-644-3500

1-800-390-7356

View all Properties at www.hallandhunter.com
BLOOMFIELD HILLS CONTEMPORARY | \$2,699,000

OPEN SUN 2-4, TUES 4:30-6:30
1750 Hillwood, S. of Long Lake, E. of Kensington
Absolutely stunning on 2 acres of prime wooded land w/streams. Featuring 2-story open great room w/fabulous fireplace, huge 1st floor master suite w/2 bedroom suites on the second level. Stainless steel & granite kitchen. Plus so much more! HIL21099782


DREAM HOME IN BLOOMFIELD HILLS | \$1,590,000

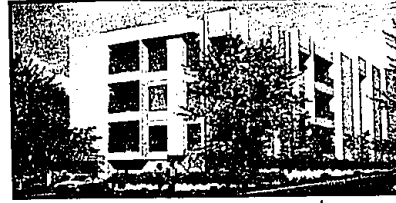
Enjoy your privacy from this wonderful home featuring 5 bedrooms, 5 baths, plus 1 lav. Each bedroom is a very private. Heated indoor pool and beautiful view from backyard patio. Possible apt for new home. BAR22020125


HISTORIC POPPLETON TUDOR | \$1,475,000

A true story book home with all the amenities of today, offering 6-BR's, 4.5 baths, 3 floors of living space plus finished bsmt w/fireplace. Many interesting details, front and back staircases and separate nanny quarters. Professionally landscaped. RIV22021853


RIVERSIDE SETTING IN BLOOMFIELD HILLS | \$949,000

Lovely view overlooking ravine from door walls in spacious kitchen, family room and luxurious 1st floor master suite. Beautifully finished walkout lower level, great for entertaining, 3 fireplaces, amenities galore! PVA22004154


B'HAM CONTEMPORARY CONDO | \$1,500,000

One of a kind designed by Tobocman. Only 9 units to be built in this fantastic location, featuring large open rooms, gas FP, underground parking and spacious terraces. The ultimate in elegance with extraordinary attention to detail. OWO22020524


ONE ACRE IN BLOOMFIELD | \$625,000

Private wooded setting offering 4 BR's, 3.5 baths, open floor plan, living room w/FP and vaulted ceiling. Private master suite w/WC and dressing area. Additional 1500 sq. ft. of living space in fn walk-out LL. Lake privileges to Island Lake. LON22023276


5-BR ON WOODED LOT IN BLOOMFIELD | \$575,000

Situated on a private wooded lot this 5 bedrooms, 3 bath home offers a great room w/vaulted ceiling, FP, and wet bar. Kitchen opens to sunny family room, master suite w/dressing area and WIC. Fin LL has hot tub and wet bar. GOL22023315


BEAUTIFUL GEORGIAN COLONIAL | \$969,000

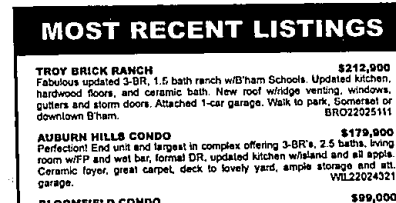
Located on one of B'ham's most desirable streets this home offers, formal living room, large family room w/built-in, hwd fls., & FPA. Cherry library & kitchen w/granite & premium appls. Luxury master suite, & finished rec room in bsmt. LYO22020048


LIKE NEW IN TROY | \$379,900

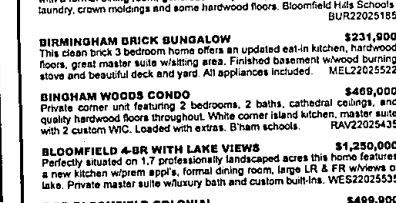
Lovely neutral decor with many updates. Designer kitchen with island and hardwood floor, includes all appliances. Master bedrooms with extra large bath and closet. Family room with fireplace + TV alcove. Extended garage, security system. IRY22007501


BLOOMFIELD HOLIDAY HILLS SUB | \$285,000

Well maintained home by original owner. Great floor plan w/1st floor laundry, 4 bedrooms, 2.5 baths. Kitchen w/breakfast room opens to family room, 1st floor den/library. Master suite with walk-in closet. Many hardwood floors. KOP22019248


3/4 ACRE DOUBLE LOT | \$379,000

Take an evening stroll to watch the sunset on Orchard Lake or enjoy boating and swimming on beautiful Pine Lake. Built in 1925 this charming cottage is waiting for a buyer with an eye for value and possibilities for renovation. ORC22002850


1.06 ACRES IN EXCLUSIVE DEVELOPMENT | \$284,900

Located on the end of a cul-de-sac and ready for a 4,000+ sq. ft. home. Ample room for a circular drive, pool or tennis courts. Come visit this private enclave in the Village of Franklin. Builder will build their plans or yours. STO22002952


ELEGANT ROCHESTER CONDO | \$329,900

Open and airy this neutral condo features 1st floor master suite w/extra large closet and bath with jetted tub. Kitchen w/island & large breakfast nook, great room w/fireplace, library w/frnch doors. 2-BR's + bonus room on 2nd level. COP22000995


WELL LOCATED IN COUNTRY CLUB MANOR | \$148,900

Situated in a private setting with a view of the pool this spacious 2 bedroom upper unit condo includes a slate porch, and hardwood floors under carpet. Assoc. fees includes heat, AC, water & ground maintenance. Bloomfield Hills Schools. MAP22005280

MOST RECENT LISTINGS

TROY BRICK RANCH | \$212,900
Fabulous updated 3-BR, 1.5 bath ranch w/Bham Schools. Updated kitchen, hardwood floors, and ceramic bath. New roof w/ridge venting, windows, gutters and storm doors. Attached 1-car garage. Walk to park, Bonnell or downtown B'ham. BRV22025111

AUBURN HILLS CONDO | \$179,900
Perfect! End unit and largest in complex offering 3-BR's, 2.5 baths, living room w/FP and wet bar, formal DR, updated kitchen w/island and all appls. Ceramic foyer, great carpet, deck to lovely yard, ample storage and w.c. garage. WIL22024321

BLOOMFIELD COMPO | \$99,000
Desirable first floor unit offering 2 bedrooms, 1 bath and priced to sell. Large private storage room and laundry facility in basement. Great Bloomfield location. BLO22024742

BLOOMFIELD COLONIAL | \$529,900
Well located and perfectly maintained this 4-BR home offers a great floor plan with a formal dining room, generous family room, kitchen w/whitezer, 1st floor laundry, crown moldings and some hardwood floors. Bloomfield Hills Schools. BUR22025185

BIRMINGHAM BRICK BUNGALOW | \$231,900
This clean brick 3 bedroom home offers an updated eat-in kitchen, hardwood floors, great master suite w/dressing area. Finished basement w/wood burning stove and beautiful deck and yard. All appliances included. MEL22025522

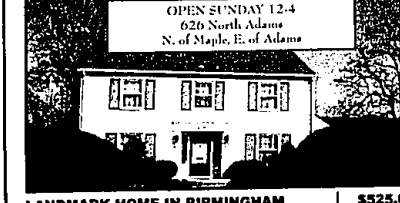
BINGHAM WOODS CONDO | \$469,000
Private corner unit featuring 2 bedrooms, 2 baths, cathedral ceilings, and quality hardwood floors throughout. White corner island kitchen, master suite with 2 custom WIC. Loaded with extras. B'ham schools. RAV22025435

BLOOMFIELD 4-BR WITH LAKE VIEWS | \$1,250,000
Perfectly situated on 1.7 professionally landscaped acres this home features a new kitchen w/granite appls, formal dining room, large LR & FR w/views of lake. Private master suite w/luxury bath and custom built-ins. WES22025535

5-BR BLOOMFIELD COLONIAL | \$469,900
Center entrance colonial with 2-story foyer features large bedrooms, LR w/fireplace and built-in bookcases, library w/gray ceiling, skylight, and built-in. Updated kitchen opens to FR w/2nd FP. Master suite w/dressing area. BRV22025635


BLOOMFIELD CUSTOM COLONIAL | \$474,900

This custom built 4 bedroom home offers generous room sizes, 2 full baths and 3 lavs. Large formal living and dining rooms, family room, kitchen and breakfast area. 1st floor laundry, fin bsmt and oversized garage. Beautiful lot. HIL22023852


LANDMARK HOME IN BIRMINGHAM | \$525,000

Part of the Adams Farm Estate, this charming colonial sits on 2 lot and offers 3-BR's, 2.5 baths, dining room, family room, and study. Beautifully landscaped yard includes in-ground pool w/changing rooms. Third lot is priced at \$300,000. ADA22022869


WELL LOCATED IN COUNTRY CLUB MANOR | \$148,900

Situated in a private setting with a view of the pool this spacious 2 bedroom upper unit condo includes a slate porch, and hardwood floors under carpet. Assoc. fees includes heat, AC, water & ground maintenance. Bloomfield Hills Schools. MAP22005280

442 south old woodward, birmingham, mi 48009

Competence, Integrity and
Personal Attention!

Exclusive
Affiliate of

CHRISTIE'S
GREAT ESTATES

Equal
Housing
Opportunity

Realty
Group

Who's Who In
Luxury Real Estate

RELO