



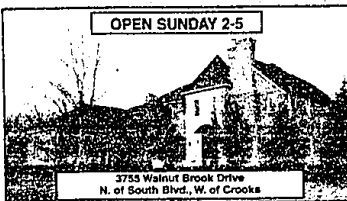
HANNETT·WILSON & WHITEHOUSE LLC REALTORS

880 S. Old Woodward Ave.
Birmingham, Michigan 48009
(248) 646-6200

www.hwwrealtors.com



SPECTACULAR LAKEFRONT
Designer's own home on prestigious Upper Long Lake. Wonderful home for entertaining and family activities both inside and outside. Approximately 6000 finished sq. ft. Magnificent swimming pool and gorgeous gardens. \$1,800,000 LON181



OPEN SUNDAY 2-5
3753 Walnut Brook Drive
N. of South Blvd., W. of Crooks
LAKE NEW!
Custom quality throughout this elegant family home in a customarily landscaped private setting located in prestigious Walnut Brook Estates! Library with fireplace, family room adjacent to large Downview kitchen. \$1,399,000 WAL375



BEAUTIFUL IN BLOOMFIELD
Magnificent ranch home features marble foyer, two-story living room with French doors to balcony. Solarium overlooks indoor exercise/pool/spa area, gourmet granite island kitchen, billiard/games room. \$3,300,000 PIN58



SYLVAN LAKE FRONTAGE
Newer construction with the ultimate in panoramic lake views! Great location adding convenience to the lake. Three boat launches with steel seawall. Extensive use of marble, granite, hardwoods. Custom quality throughout. \$1,399,000 ISL271



CITY OF BLOOMFIELD HILLS
Private wooded setting! Gardens, pond and river views! Large great room with vaulted ceiling, skylight and fireplace. Custom kitchen with octagon shaped breakfast room, large first floor master with fireplace and marble bath. \$1,069,000 VAL84



LAKE ANGELUS
Fabulous custom 1988 waterfront home with 130' frontage. Great room with cathedral ceilings, walls of windows and fireplace. First floor master suite with steam shower and whirlpool. Four fireplaces, island cherry kitchen. \$1,450,000 LAV248



QUARTON LAKE ESTATES
Beautifully decorated 4 bedroom 2 1/2 bath traditional colonial on a popular street in an area of fine homes! Hardwood floors, family room with fireplace. \$799,000 PL989



GENTLEMEN'S HORSE FARM
Perfect setting for having a horse or tennis or fishing in your own pond. Heated barn ideal for car buff, artist's studio or office. Subdivision living with country privacy. \$700,000 ASP688



LOTS OF SPACE
Quality throughout this spacious home. Custom master suite, chef's gourmet kitchen with granite, 4 fireplaces. Finished lower level with high ceilings and kitchen. \$819,900 LON257



SOPHISTICATED CONTEMPORARY
No expense spared on this totally renovated interior! Top-of-the-line! Gourmet kitchen which must be seen. Heated floors, media room. Very high level! \$700,000 AFD987



OPEN SUNDAY 1-4
2695 Bloomfield Crossing
S. of Square Lake, E. of Opdyke
BLOOMFIELD HILLS SCHOOLS
Great for entertaining. Large island kitchen opens to family room with cathedral ceiling and fireplace, second fireplace in living room, leaded glass, crown moldings. \$625,000 BLC269



OPEN SUNDAY 1-4
20070 Village Drive
S. of 14 Mile, W. of Evergreen
WONDERFUL SITE CONDO
First floor master suite with large library. Updated kitchen features granite cabinets and corian counters. Low association fee covers lawn and snow maintenance. \$719,000 VIL200



GREAT VALUE!
This 4500 sq. ft. property features the newly developed Shepherd's Cove. 5300 sq. ft. finished home with 4 bedrooms, 3 1/2 baths, 2 car garage. \$500,000 POC268



BLOOMFIELD VILLAGE
Lovely 4 bedroom, 2.5 bath colonial on an extra large lot. Completely updated with new hardwood floors. New hardwood floors, living room with fireplace. \$544,900 WIL120



BIRMINGHAM
Beautiful corner setting with private courtyard and perennial gardens. Many new features including air conditioning systems, cedar shake roof, heating system. \$625,000 WIL710



FRONT
This 4500 sq. ft. property features the newly developed Shepherd's Cove. 5300 sq. ft. finished home with 4 bedrooms, 3 1/2 baths, 2 car garage. \$500,000 POC268



GOLF COURSE SETTING
On the 9th fairway! Outstanding 3400 sq. ft. condo includes walk-out. Many custom features include French doors, 3 fireplaces, private driveway, corner unit. \$399,000 BRP544



WOODED RAVINE SETTING
Custom home on a beautifully landscaped private lot. Gourmet white island kitchen, two-story foyer and great room, paver patio off finished walk-out lower level. \$334,900 TYL610



OPEN SUNDAY 1-4
8100 Forest
S. of 14 Mile, E. of Pines



LAKE PRIVILEGES
This 4500 sq. ft. property features the newly developed Shepherd's Cove. 5300 sq. ft. finished home with 4 bedrooms, 3 1/2 baths, 2 car garage. \$500,000 POC268



BIRMINGHAM SCHOOLS
Updated home in a popular area! Many newer features include roof, baths, furnace/air, hot water heater. Dining room with fireplace. \$339,000 WAD105