

Arts & Entertainment

GALLERIES ■ THEATER ■ DANCE ■ DINING

Hot tickets

Odoba Mexican Grill
Celebrates the grand opening of its second Oakland County location, 795 E. Maple, next to Kroger's, in Birmingham with a charity fundraiser party 11 a.m. to 7 p.m. Monday, Feb. 24. For \$5 patrons can enjoy Odoba food and drinks. Proceeds benefit the American Cancer Society. The restaurant opens to the public Tuesday, Feb. 25. They'll be open 11 a.m. to 10 p.m. Monday-Thursday, until 11 p.m. Friday-Saturday and until 9 p.m. Sunday. Call (248) 593-3486. The second location is in Royal Oak, 301 S. Main, (248) 336-9660.

Autorama
Devout gearheads and end just plain folks will be gathering at Cobo Center in Detroit this weekend for Autorama. The show features more than 1000 exhibits of cool hot rods, custom cars, trucks, vans and motorcycles of the past and present. Celebrity appearances include wrestling superstar Stone Cold Steve Austin, noon to 2 p.m. Saturday; and NASCAR driver Brett Bodine, 7-9 p.m. Friday. Show hours are noon



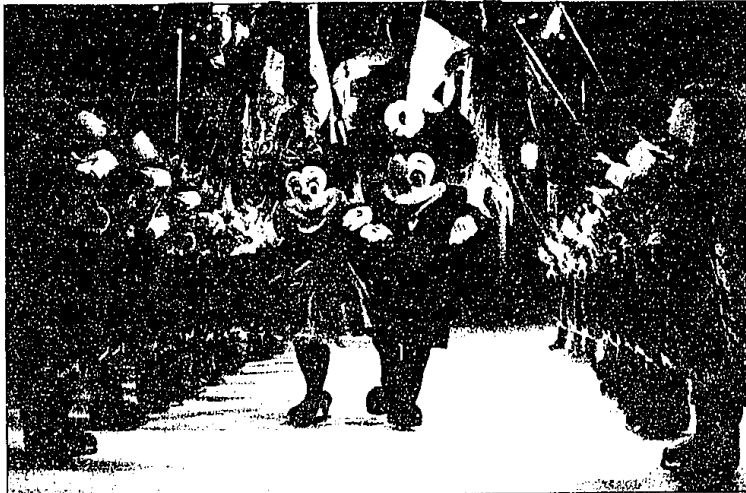
to 11 p.m. Friday, Feb. 21; 10 a.m. to 11 p.m. Saturday, Feb. 22; and 10 a.m. to 8 p.m. Sunday, Feb. 23. Admission \$15, children 6-12, \$5, no charge for children 5 and younger. Call (248) 293-7700.

Around the world
The Ann Arbor Symphony Orchestra takes audiences on an imaginary journey around the world 4 p.m. Sunday, Feb. 23, with some of the most famous dances of all times. The concert begins in the American West with Aaron Copland's *Hoe Down*, and concludes in an art gallery with Modest Mussorgsky's *Pictures at an Exhibition*. Tickets \$15 adults, \$5 children, call (313) 994-4801 or online at www.a2so.com.

Radio laughter
Radio hostesses and society doyennes Vesla Poltek and Dixie Mandrell bring you all the hilarious comings and goings of all the activities in



and around the Luna Del Mar Manufactured Home Oasis and Monkey Emporium in Radio TBS. By Mark Landon Smith, presented by SRD Productions, 8 p.m. Friday-Saturday, 2 p.m. Sunday, Feb. 21 to March 9. Tickets \$10 adults, \$8 children 12 and under and senior adults. Performances in the 1954 Church located at the Burch Historical Park, corner of Civic Center Drive and Berg Road, in Southfield. Tickets at the door or call (248) 827-0710.



Mickey and Minnie will make a grand entrance during *Princess Classics*.

Disney's princesses to reign at The Palace

BY LAHA MINI
STAFF WRITER

Anyone with a child knows lit the girls adore princesses. For the first time ever, Disney is bringing its leading ladies - Cinderella, Jasmine, Ariel, Sleeping Beauty, Belle, Mulan and Snow White - together in one show: *The Princess Classics*, opens Wednesday, Feb. 26 at The Palace of Auburn Hills. "The show features all Disney's princesses beginning with Snow White who came onto screen in 1937 all the way to Mulan from 1998," said Joanna Wilbee, regional director for Disney On Ice publicity. "The princesses span across multiple generations and the show's apex, of course, is Cinderella who everyone loves." *Princess Classics* is geared toward young girls, but boys admit to liking the *Wishes or The Beast from Beauty and the Beast*, Wilbee said. All the princesses have obstacles to overcome and battling bad guys brings action that boys adore. "Little girls come to the show wearing their princess dresses and tiaras. Princesses have become so popular that kids seem to be incorporating the



Fun-loving characters file the seven dwarfs will be on stage with Snow White during *Disney On Ice*.

fancy clothes into their everyday wardrobe," Wilbee said. "What makes the ice shows so magical to kids is that it's 3-D." Wilbee said. "When the characters move from cartoons to 'living' characters that you can touch it's even more exciting." Each *Disney On Ice* show spans at least five years worldwide. "We transport people to a place that is more magical than they could ever imagine," said show producer Kenneth Feld. *Princess Classics* marks

Disney's 23rd *Disney On Ice* production. One of the highlights is a freestanding, 33-foot-tall castle that weighs eight tons - larger than most Broadway sets. Throughout the show the castle will turn and rotate. One angle shows reflective stained glass for the *Beauty and the Beast* scenes. Exotic jewels and gold hues sparkle for *Aladdin*. And to further amaze the children, the castle will even magically appear to

PLEASE SEE DISNEY, B2

DISNEY ON ICE

What: Twenty professional skaters take stage at The Palace in Auburn Hills for the *Disney On Ice Princess Classics*

When: 7:30 p.m. Wednesday-Saturday, Feb. 26 to March 1, 11 a.m. Friday, Feb. 28, 11:30 a.m. and 3:30 p.m. Saturday, March 1; 1 p.m. and 5 p.m. Sunday, March 2.

Tickets: \$15, \$18.50 and \$25. Limited number of \$35 and \$45 VIP seats.

For more information: Visit www.disneyonice.com, www.ticketmaster.com or call (248) 645-6666.



Artistic Expressions
Linda Chomin

From Moldavia to the LSO to the Met, star opera singer shines

Irina Mishura doesn't think of herself as special. America is a land of refugees, and Mishura says she's just one of many who have struggled to build a better life. That's true, but do you know anyone who immigrated to the U.S., and within a decade, was performing at the Metropolitan Opera in New York and guesting with European opera companies? It hasn't been an easy road. Mishura, a mezzo soprano, and star of the Moldavian State Opera company for seven years, left in 1992 when the political situation became tense. She immigrated to Oak Park and spent hours learning English and practicing

PLEASE SEE MISHURA, B2



Mishura

IRINA MISHURA

What: The mezzo soprano sings favorite Russian songs and operatic arias in a recital concert presented by Pro Musica.

When: 8 p.m. Wednesday, Feb. 26

Where: Detroit Institute of Arts Auditorium, 5200 Woodward Ave.

Tickets: \$35, call (313) 833-4005

Arts council events bring back psychedelic prints, fringed vests

BY LINDA ANN CHOMIN
STAFF WRITER

The Plymouth Community Arts Council sure knows how to throw a party. Last year's Western theme dinner and auction drew hundreds of supporters dressed in denim and cowboy boots. This year's '70s bash is proving just as popular. There are only 20 tickets left to the Friday, March 14, event, but party lovers can still take part in the fun while supporting a good cause. Wear your psychedelic prints, fringed vest and Frye boots to the Friday, March 7, preview party. You can bid on more than 100 items, including a signed Sergei Federov jersey, digital piano, Art & Crafts-style bent leg rocking chair, a one-week stay at a condo in Puerto Vallarta, jewelry, painted furniture, spa packages, tickets to the Detroit Symphony Orchestra, Detroit Pistons and Detroit



These are some of the items on the auction block at the Plymouth Community Arts Council fund-raiser.

PLEASE SEE PCAC, B2

PASSIONS OF THE PAST: A '70S BASH

What: Plymouth Community Arts Council holds its annual dinner-dance and auction to raise funds for educational and community programs

When: 5:30 p.m. to midnight Friday, March 14
Where: St. John's Golf and Conference Center, 44045 Five Mile Road, Plymouth Township
Tickets: \$75. To purchase tickets, donate an auction item or help the planning committee, call (734) 416-4278

Auction preview: Auction items will be on display 6-9 p.m. Friday, March 7. No charge but donations welcomed

Ballet Shoes or Wing Tips?



Make no difference as long as you take time to put your feet up, get comfortable and spend some time with us.