

Fun, pancakes abound during Alameda reading month event

BY SUE BUCK
STAFF WRITER

About 300 students at Alameda Early Childhood Center had a whole lot of fun with their pancakes Wednesday. Teacher Terry Schneider organized the special event, which was based on the book, *If You Give A Pig A Pancake* by Laura Numeroff and illustrated by Felicia Bond. Staffers

'Children can gain a year of learning (when parents read to them).'

Jan Colliton
Farmington Schools superintendent

wore pajamas or nightgowns. Schneider's blue pajamas featured novelty walruses.

If You Give A Pig A Pancake is a "circle book," which means the ending takes the reader back to the beginning. The mischievous pig makes many requests that keep his child friend busy as she tries to accommodate them.

The pig starts out wanting to eat a pancake requiring syrup, which makes the pig sticky, which requires a bath, which requires some bubbles, which requires a toy and then a rub-



Taylor Spear enjoys another bite of pancake.

ber ducky and so forth.

The event was held in celebration of March is Reading Month and in sync with Gov. Jennifer Granholm's initiative that parents read to their young children 20 minutes a day.

Farmington Board of Education member Cathy Webb served as the school's guest reader in the morning, and Farmington Public Schools Assistant Superintendent Jan Colliton read in the afternoon.

"Children can gain a year of learning (when parents read to them)," Colliton said. "If children hear the sound of language on the ears, they can tell what comes next."

Sometimes parents from foreign countries are hesitant to read stories in their native language because they want their children to learn English. That's a mistake, Colliton said. "It doesn't matter what lan-



The crowd of youngsters belled up to the table for helpings of pancakes with maple syrup.

guage they are reading in," Schneider said the combination of text and pictures also helps kids learn language.

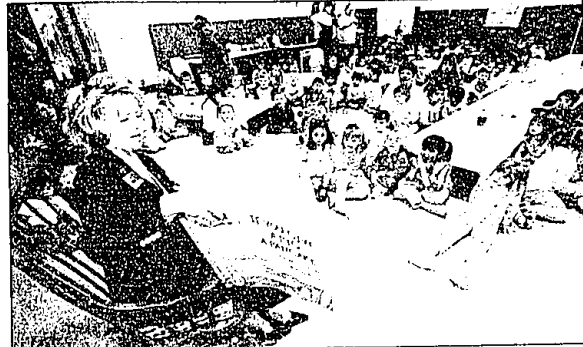
"The illustrations tell you what's going on by looking at it," he said. "It makes the connection for what they see and hear."

The pancake day tied in with the previous week's lessons. Students traveled to Kensington Park to learn how

maple syrup is made, said teacher Dawn Smith.

"First we had to find the maple trees," Smith said. Because the trees have no leaves, children learned how to distinguish maple trees by their "buddy branches."

Three farmers helped the students drain sap, she said.



School board member Cathy Webb reads 'If You Give a Pig a Pancake' to an appreciative crowd.

Benefit to aid CLC

Master chef Milos Cibielka's Celebrity Chef's Dinner to benefit Community Living Centers, Inc. will be 6:30 p.m. Friday, March 28 at the Detroit Athletic Club, 241 Madison Ave. in Detroit. Tickets are \$125, of which \$75 is a tax-deductible donation to Community Living Centers.

Featured chefs will include Kevin Brennan, Detroit Athletic Club; Brian Polcyn,

Five Lakes Grill; Takashi Yagihashi; Tribute; Charles Rachwitz; Rocky's Steve Allen, Steve & Rocky's; Marcu Haight, The Lark; Paul Grosz, Buisine; Jeff Hammer, Detroit Athletic Club (pastry chef) and Give Thanks Bakery and Cafe. Checks may be mailed to Community Living Centers Inc., 33235 Grand River, Farmington, MI, 48336. Call (248) 478-0870 for details.

Spring Egg Hunt planned

The Farmington Area Jaycees presents its 48th annual Farmington Spring Egg Hunt at Heritage Park from 10-11:30 a.m. Saturday, April 12.

The egg hunt starts at 10 a.m. with ages 1-3 hunting from 10:15-10:30; ages 4-6 hunting from 10:30-10:45 and 7 and up

from 10:45-11.

There will also be a drawing contest organized by age group. All activities are free of charge.

The rain day is scheduled for Saturday, April 19, same time and place. Heritage Park is located off Farmington Road, north of 10 Mile.

Express yourself.
Write a letter
to the editor.



Sugarloaf Art Fair



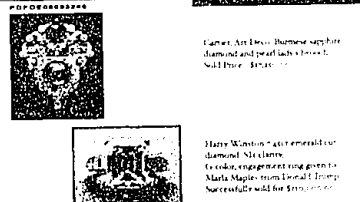
April 11, 12, 13, 2003
Novi Expo Center
Novi, MI

Daily Adult Admission \$6.00
Children under 12 & Parking FREE
Friday, Saturday & Sunday 10-6

All Industries • Entertainment
Gift Demonstrations • Specialty Foods
For Discount Admission Coupons
• Visit your local Farmer Jack
• Print them from www.SugarloafCrafts.com
• Call 800-210-9900

DIRECTIONS: Take I-96 to Exit 162. Turn south on Novi Road. Turn right onto Expo Center Drive. The Expo Center is located one block on the right.

BUY CRAFTS ONLINE AT
www.CraftsOnline.com



Your Fine & Estate Jewelry Is Valuable. But No More So Than at Auction.

An exclusive "Auction Consignment & Purchasing Event" will be held Wednesday, March 26, in the Plymouth/Northville/Novi area and Thursday, March 27, in the Birmingham/Bloomfield area. This is a rare opportunity to have your important pieces purchased or evaluated for sale at auction.

Specialists Joseph DuMouchelle and Melinda Adkins are fine jewelry experts, with 45 years combined experience; graduate Gemologists, trained to provide accurate & fair valuations; and the auctioneers people trust, including Maria Maples, the Nat King Cole family and the Detroit Institute of Arts. Call for your private appointment.

1 800 475 8698

Jewelers, executors, private bankers also welcome.



DuMouchelle
Grosse Pointe Farms, MI
More Knowledge. More Results.

Follow your favorite high school sports team each week in the Observer



ATTENTION LADIES!

Announcing The Opening of Another 30 Minute Circuit Training & Weight Loss Center



www.ladiesworkoutexpress.com

- Ladies Only - No Guys
- 24 Station Circuit Training
- Award Winning Weight Loss System
- Fast - Safe - Simple
- Quick Results



SOUTHFIELD
Southfield Plaza
29702 J South Road
On Southfield Road between 12 Mile & 13 Mile Roads
CALL (248)557-5600 NOW!

Ladies Workout Express is a subsidiary of Lady Of America, The World's Largest Chain of Women Only Fitness Centers.



THREE CAMPS AND FUN ALL IN ONE!



- Cool Kids Camp
- Awesome Adventurers Camp
- Energetic Explorer Camp

SESSIONS BEGIN
JUNE 16TH

(248) 661-3630

4150 Middlebelt Road, West Bloomfield 48323
(Between Lone Pine and Long Lake Roads)

