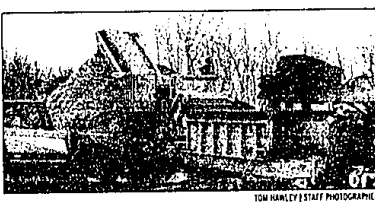


TREES
FROM PAGE A1

tree's trunk. However, he said, there is no guarantee the procedures will work.

Commercial insecticide sprays or injections by professional tree service companies are an option. An injection for a large tree could run about \$80, he said.

Removing infected trees is also expensive. A normal-sized tree could run \$750 for removal and another \$160 for stump removal, Roberts said. Nonetheless, property owners are encouraged to remove infected trees properly before



An Asplundh Tree Expert Co. chipper chops up large pieces of a diseased ash tree at the Westland Public Services department.

May as the adult beetles will begin to emerge around May 1 and then fly to infect other trees and multiply, Roberts said.

Four sites picked for ash tree chipper

BY KURT RUBAN
STAFF WRITER

State agricultural officials have set up four area sites where local communities, businesses and homeowners can drop off ash trees infested by the emerald ash borer.

The tiny exotic pest from Asia has devastated ash trees within a six-county area in Southeast Michigan. Many cities have been busy cutting down dead and dying trees. However, to effectively kill the larvae inside the tree, wood must be either burned or chipped.

Since most communities don't have access to chippers that can handle large logs, Michigan Department of Agriculture officials have been looking for potential drop-off sites where communities can take advantage of the state's equipment.

Last week, state officials announced they have set up initial sites in Pontiac, Macomb Township, Plymouth Township and Westland.

According to Kendra Anderson, the state's director of operations for the emerald ash borer project, the four sites will only accept ash timber. "We'll take chips, limbs, logs. Essentially any shape or size of ash tree. This isn't to get rid of the pallets grandpa has stored

away behind the barn," she said.

The state currently has one chipper moving around to the four sites. The four cities involved are donating space and labor.

Anderson said the state would ideally like to find a couple more cities to participate, although their is no monetary payment involved.

"The payment to host a yard is the opportunity to get rid of the dead trees, which is worth quite a bit of money. It will also save them the cost of transporting the trees. We're looking for a city with a lot of trees that will come down, so there is a real benefit for them," she said.

"The payment to host a yard is the opportunity to get rid of the dead trees, which is worth quite a bit of money. It will also save them the cost of transporting the trees. We're looking for a city with a lot of trees that will come down, so there is a real benefit for them," she said.

Bill Zikewich, Southfield's superintendent of parks, forestry, and environmental programs, had the remnants of about 200 trees cut down from a city golf course transported to the Plymouth drop-off site last week.

He hired a contractor to do the job at a cost of about \$1,800.

"You either have to haul them yourself, and tie-up your labor, or you contract it out to someone with a loader, so they can do the work for you. Right now, we have the money to do it. We'll have to wait and see what the picture looks like in the future," he said.

According to Zikewich, there are still about 2,000 ash trees

on city property, which will likely have to come down this summer or next year.

Anderson estimated up to 6 million ash trees will die this summer, and an equal amount will begin to show initial signs of infestation. So she expects the yards to be busy all summer.

She said once the trees are chipped, the chips will be sent to a Genesee County electricity plant, where they will be burned for fuel.

So at least a little good will come of the infestation.

"I guess you could say we're trying to make lemonade out of a lemon," Anderson said.

The addresses for the four drop-off sites are as follows:

- Pontiac, at the landfill, located at 575 Collier Road.
- Macomb Township, at the Mid-Michigan Recycling Company, located at 24535 21 Mile Road.
- Plymouth Township, at the Asplundh Tree Expert Company, located at 13101 Eckles Road.
- Westland, at the department of public works yard, located at 37137 Marquette Road.

For more information about the drop-off sites, or to host a site, contact the Michigan Department of Agriculture at (248) 356-1701.

Arthritis Today
JOSEPH J. WEISS, M.D. RHEUMATOLOGY
19829 Farmington Road
Livonia, Michigan 48152
Phone: (248) 378-7860

HEBERDON KNOES
Certainly, a reason for concern is a thickening and enlargement of the knuckles. The good news is that while these changes may initially cause soreness in your hands, that problem soon disappears. Furthermore, these changes in your hands do not limit the function of your fingers, you need not be concerned you will become crippled.

The bad news is that these changes are inherited, there is nothing you can do, or medicine you can take, to prevent these changes. In addition, enlargement of your knuckles occurs because of the laying down of calcium, that is, extra bone around the finger joint. That means that a hand surgeon cannot perform cosmetic surgery to restore your fingers to their former contours. These changes in your knuckles are called bonyhard nodules when they occur at the middle joints of your fingers, and are known as heberdon nodes when they happen in the distal joints of your hands.

In a minority of cases, the pain does not occur. If such occurs, you should see your doctor, as treatment is indicated. The first step is to make sure you do not have rheumatoid arthritis which can present in a similar manner. Physical examination of your hands, and noting the firmness of your hand joints usually suffices to establish you have heberdon or bonyhard nodules. Therapy with anti-inflammatory medication or joint injection will control the pain. In time, the inflammation resolves and you no longer need treatment.

www.drjwweiss.yourmd.com

SPOTLIGHT ON
Orthodontics
By Josephine Finazzo, D.M.D.
A BIT HARD TO SWALLOW

Many of the orthodontic patients who are treated for protrusion of the upper teeth are tongue thrusters. This abnormal habit involves placing the tongue between the teeth, which pushes the front teeth apart and out, both before and during the act of swallowing. During a normal swallow, the mid-tongue should be placed on the roof of the mouth, not between the teeth. Swallowing is normally painless. However, throughout the day at a rate of about 2,000 times daily. With each swallow, the tongue can exert momentary pressure of one to six pounds on the protruding structures of the mouth. It is not hard to see, then, how tongue thrusting can move teeth into abnormal positions requiring orthodontic correction.

What comes naturally for some might not be so natural for others. At THE ORTHODONTIC GROUP, located at 19850 Midfield, we would be happy to examine your teeth and talk about options for a better, healthier smile. We even have a computer imaging system that helps patients visualize what the end result of orthodontic treatment may look like. Call 422-8885 to make an appointment. Day and evening appointments are available, and no referral is necessary. Look for our next article in two weeks.

THE ORTHODONTIC GROUP
19850 Midfield • Livonia • (248) 422-8885

FARMINGTON Observer
It's all about you!

Susan Rosiek, Executive Editor (734) 953-2100 srosiek@oe.hometown.net	Hugh Gallagher, Managing Editor (734) 953-2149 hgallagher@oe.hometown.net
Joni Haberd, Community Editor (248) 477-5450 jhaberd@oe.hometown.net	Sue Beck, Reporter (248) 477-5450 sbeck@oe.hometown.net
Pavel Pace, Reporter (248) 477-5450 ppace@oe.hometown.net	Bill Bresler, Photographer (248) 477-5450 bbresler@oe.hometown.net
Don O'Meara, Sports Editor (734) 953-2141 domeara@oe.hometown.net	Frank Cior, Advertising Consultant (734) 953-2187 fcior@oe.hometown.net
Greg Phillips, Delivery Manager (734) 953-2214 gphillips@oe.hometown.net	Katie McManus, Receptionist (248) 477-5450 kmcmanus@oe.hometown.net

■ Circulation 734-591-0500
■ Classified Advertising 800-579-7355
■ Display Advertising 734-591-2300

■ Home Delivery 734-591-0500
■ Newsroom FAX 734-591-7219
■ Newsroom 734-593-2104

■ Photo Reports* 734-591-2234
■ Newsroom FAX 734-591-7219
■ Sports Nightline 734-593-2104

*Photo orders must be for pictures that have been taken by our staff photographers. Please provide publication date, page number and description of the picture, which must have been published within the past six months. Prints are \$20 for the first print, \$15 for each additional print. Payment is in advance (check or credit card). Visit us on the web at: www.observeandentertain.com

CIRCULATION BUSINESS HOURS/SUBSCRIPTION RATES
Monday - Tuesday - Wednesday - Friday 8:30 a.m. to 5:00 p.m.
Thursday - 8:30 a.m. to 6:00 p.m. Sunday - 8:00 a.m. to 12 noon
If you missed a delivery please call by 5:00 p.m. Thursday and 10:00 a.m. Sunday

CARRIER DELIVERY MAIL DELIVERY

One year...\$51.00	One year...\$72.95
One year (Senior) M-F...\$41.60	One year (out of state) \$108.95
	Newsstand...75¢ per copy

CPC HPA SNI
A HomeTown Communications Network* publication
2341 Grand River, Farmington MI 48325 (On the southwest corner of Grand River and Farmington Rd.)

MIDFIELD
BREWERY AND SPIRITS
SERVING LUNCH & DINNER
Full Menu with Everything from Ribs and Steaks, to Sandwiches and Salads

Hours: Mon.-Wed. 11 am-Midnight
Thurs. 11 am-2 am
Sat. 4 pm-2 am
Sun. 12 pm-Midnight

30555 Grand River Ave. Farmington Hills (248) 422.1000

FISH FRY Every Friday 5:00-8:00 pm. (All you can eat) \$6.99

• Happy Hour 4-7 PM
• 9 Big Screen TV's (24 TV's)
• March Madness/NHL Tickets
• Game Room Available for Private Parties

15% OFF Valid at Midfield Grill & Sideline. Complete Order Only (including tax or gratuity). (Not applicable to regular priced items and beverages)

THE Sideline
Sports, Food & Spirits
Serving Lunch & Dinner

Hours: Mon.-Thurs. 11 am-Midnight
Fri. 11 am-2 am
Sat. 4 pm-2 am

36000 Seven Mile Rd. Livonia At Fox Creek Golf Course (248) 478.4330

Easter Brunch
Serving Breakfast, Lunch and Dinner Entrees
10:30 am - 3:30 pm
\$14.95 Adults - \$7.95 Children
Call 248-478-4350 for more info/reservations available

TAX PROBLEMS?
Never Talk to The IRS!
Talk to Tax Resolution Specialists of Michigan.

• Offer in Compromise • Restore Lien/Levies
• Penalty Abatement • Audit Representation
• Efile Old Returns • Innocent Spouse Relief
• Installment Payments • Payroll/Sales Tax Relief

Call (248) 985-HELP (4357) for a FREE consultation
Tax Resolution Specialists of Michigan
Member of American Society of Tax Problem Solvers

Regent Street
of West Bloomfield
Assisted Living
from \$3,500 per month

Three Star Service Like No Other

Orchard Lake Rd. South of Lone Pine Rd. West Bloomfield, Michigan 248.683.1010

Unlimited Minutes! Free Long Distance and Roaming!

\$39.99 600 minutes

• 600 whenever minutes
• unlimited weekends
• free long distance nationwide
• free roaming nationwide

FUSION

35555 Grand River Ave., Farmington Hills 248-427-8476 (Corner of Oak and Grand River)
31502 Woodward Ave., Royal Oak 248-840-7700 (Between 12 and 14 Mile Rd.)

Service is available only in the U.S. Credit approval, activation fee and service agreement required with \$200 early termination fee per number. Taxes, assessments, late and roaming charges additional. Limited service. Service not available in all areas. A portion of a minute used is rounded up and billed at the full minute rate. Calls are measured from the time the network begins to process the call until the phone is hung up. Service is not available in all areas. Free domestic long distance but not for credit card or pay-by-phone calls. Free domestic long distance but not for credit card or pay-by-phone calls. Additional charges apply. Additional charges apply. See printed materials for details. Offer valid 3/24/03-4/30/03. Taxes and assessments additional. ©2002 T-Mobile. Service not available in all areas. A portion of a minute used is rounded up and billed at the full minute rate. Calls are measured from the time the network begins to process the call until the phone is hung up. Service is not available in all areas. Free domestic long distance but not for credit card or pay-by-phone calls. Free domestic long distance but not for credit card or pay-by-phone calls. Additional charges apply. Additional charges apply. See printed materials for details. Offer valid 3/24/03-4/30/03. Taxes and assessments additional. ©2002 T-Mobile. Service not available in all areas. A portion of a minute used is rounded up and billed at the full minute rate. Calls are measured from the time the network begins to process the call until the phone is hung up. Service is not available in all areas. Free domestic long distance but not for credit card or pay-by-phone calls. Free domestic long distance but not for credit card or pay-by-phone calls. Additional charges apply. Additional charges apply. See printed materials for details. Offer valid 3/24/03-4/30/03. Taxes and assessments additional. ©2002 T-Mobile.