

**RANCH**  
FROM PAGE C1

to your immediate left has been converted into an office. Beyond that room, in the southwest corner of the house, the old main bedroom is now a guest bedroom. The bathroom is now a master bedroom suite and a 300-square-foot addition is the new master bedroom.

remodeled into a family room. It is now heated more efficiently, thanks to a new furnace installed in the garage. Every window and light fixture, and nearly every door in the entire house, was replaced.

"We wanted to make something that was functional," Livingston Hardy said. "We entertain a lot, and most (baby) boomers entertain a lot. (Guests) might come over to watch football or we might just have people over."

"Anyone looking for this

kind of situation, this would be better than a condo or a big house."

Roland adds: "It was a lot of work to do. It needed a lot of TLC. It was in pretty bad shape."

The rec room had a drop ceiling and it was unheated. But the couple had the ceiling removed, new drywall installed in the new ceiling, and recessed lights put in. The room was insulated, and a second furnace installed (this one in the garage) to heat that new

family room and more uniformly heat the house.

Crown molding was added, walls were painted a soft gray. New furnishings included an armoire built by a carpenter friend and then distressed. The armoire was then painted white and gray, and the comfort level dramatically increased in the family room.

Move into the kitchen and drama is the key word. Livingston Hardy has created a baking center on one side, with some drawers containing whisks and measuring cups and others flour and sugar. The cabinets are a mix of vanilla glazed maple cabinets on the walls with cherry cabinets on the island.

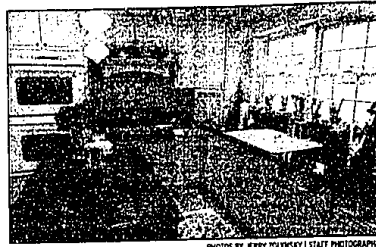
The dramatic look is added by the red maranachi granite from Brazil. "Every slab is different," Roland said.

The basement was once an open area, but with a few walls added. The walls helped create a workout room that houses a stationary bike and treadmill, a studio for Pamela and a craft room for Pamela.

In the master bathroom suite the couple removed the flooring and paneling, then insulated and drywalled. "We took it down to the studs and the extent for the ceiling," Livingston Hardy said.

They installed a soaker tub and spa shower with a bench. New light fixtures dress up the room and green mosaic tiles add beauty to it. "Bathrooms are like sanctuaries now," Livingston Hardy said.

In the hall, a closet's opening was moved from the main hallway to a location around the corner across from the master



The kitchen cabinets are a mix of vanilla-glazed maple cabinets along the walls while the island features cherry cabinets. The granite is a red maranachi from Brazil.

bathroom. A walk-in closet and a make-up area are adjacent to the bedroom and the new master bedroom.

The addition of the master bedroom adds 300 square feet to the home, and also completes a U-shape in the back yard, creating privacy for the back patio area. The bedroom is blue with a grayish tint (Pamela's blue, Roland calls it).

Pamela changed the traditional brass hinges with silver ones. The foyer area was painted red.

The couple started three weeks before moving in and only finished in December.

Roland completed the front porch and walk in a tumbled stone, along with landscape lights. Bradley pear trees were planted. "The trees are



The former rec room is now a comfortable and warm family room, all dressed up for relaxation.

columns that take away that horizontal look," Pamela said. "Ranches are just so elongated, that circle drives help to break that up."

Got a remodeling project of your home that has transformed it? We'd like to know about it and include it in our At Home section. Send a letter describing the project, including before and after photos. Contact At Home Editor Ken Abramczyk at the Eccentric Newspapers, 805 E. Maple, Birmingham, 48009 or e-mail kabramczyk@ecce.com.net.

**Pre-Season Special**

**50% OFF!**

**In-Stock Bryant Energy Star Rated Air Conditioners**

**Blue Dot**

A/C • Heating • Plumbing • and more

**BERGSTROM'S Cherry Hill MASS**

Call Today (800) BLUE-DOT (730) 522-1350

**10 Years Parts & Labor Protection Plan** (A \$700 Value)

**FREE! SERVICE CALL** With Repair (A \$59 Value)

**FREE! TUNE-UP SPECIAL** A/C FREON With Blue Dot Guardan A/C Tune-Up (A \$162 Value)

**KITCHEN REFACING FREE ESTIMATES**

New Available Affordably Granite Countertops

The Leader in Cabinet Refacing

Factory Direct

Wash less than replacing

Solid Oak, Maple, Cherry

Refinishing in your neighborhood

**cabinet clinic**

(734) 421-8151 (810) 751-1848

**fusion interior design services**

**FREE** initial design consultation

call 248 543 3400

or email: kenny.fusion@hotmail.com

**Jimnies**

**SPRING PATIO SALE!**

There's simply no better place for patio furniture than Jimnies. And there's no better time to buy than now! We've stocked up on all the outdoor essentials, and put them all on sale!

All In-Stock Merchandise **20%-50% OFF**

Every patio set, chaise lounge, grill, all outdoor wicker & teak, umbrellas, garden benches, hammocks and much more!

**PLUS: NO PAYMENT OR INTEREST FOR A FULL SIX MONTHS!**

**FREE UMBRELLA** Receive a FREE high quality, market-style umbrella with any patio set. **\$179 Value!**

Limited time offer. Must present coupon for this offer. Actual umbrella may not match photo. Some restrictions apply. See store for details.

**Spring Sale**

**Granite Countertops Lowest Advertised Price in the Tri-County Area**

**BUY WITH CONFIDENCE!** 1958 87 YEARS 2003 Serving Metro Detroit for 47 Years!

**Granite 3cm thick!**

\$38.95	S/F	Amrelo S. Fransico Real
\$38.95	S/F	Verde Tunas
\$38.95	S/F	Juparana Topazio
\$38.95	S/F	Rosa Beta
\$38.95	S/F	Luna Pearl
\$42.95	S/F	Galio Florito
\$45.95	S/F	Verde Butterfly
\$45.95	S/F	St. Cecilia
\$45.95	S/F	Tan Brown
\$45.95	S/F	Brown Sierra Fe
\$49.95	S/F	Impala Black

All prices include installation & measurement, full bullnose or straight polished edge 20 sf minimum

**JUST ARRIVED... Large inventory on marble slabs. Quick turnaround on installation!**

**In Stock**

STONE LOOK FLOORS 13X13 -1.49 S/F

**Silkstone! \$29.95 S/F Installed!** Includes installation, measurements, straight polished edge, 20 sf minimum.

**Huge Savings!! Granite Marble Remnants \$12.95 S/F**

SOUTHFIELD LOCATION ONLY

We stock over fifteen hundred slabs of Marble, Granite and Silstone in over eighty unique colors. We stock the largest selection of imported ceramic tile in Michigan. **Check our prices first!**

Since 1945

**Jimnies** **RUSTICS AT HOME**

<b>LIVONIA CLEARANCE CENTER</b> 734-522-9200 29500 W. 6 MILE RD.	<b>BIRMINGHAM</b> 734-644-1919 690 OLD S.WOODWARD	<b>SHELBY TOWNSHIP</b> 585-566-1819 14215 HALL ROAD
	<b>NOV/WIXOM</b> 734-348-0090 48700 GRAND RIVER	<b>TOLL FREE</b> 1-888-560-JIMS

www.jimmiesathome.com

ENTERTAIN RELAX ENJOY

**Ceramic Tile Sales Inc. Marble & Granite Shop**

<b>Southfield</b> 23455 Telegraph Rd. 248-356-6430	<b>Farmington Hills</b> 24301 Indoplex Circle (248) 428-0093	<b>Rochester</b> 1972 Star Belt Dr. 248-853-4954 Monday Closed - 10, 11, 12, 13, 14, 15, 16, 17, 18, 19, 20, 21, 22, 23, 24, 25, 26, 27, 28, 29, 30, 31
--	--	--

Visit one of our Showrooms!

Installation includes Hibernia, Galtanz, and Macoro Counters. Other at additional cost. Offer valid with any other discount. All previous orders excluded. Subject to stock on hand.

Southfield/Farmington Hills Hours: M-T-Th 8:30-5:00; W-F 8:30-5:00; Sat 8:30-4:00

**SHOP HERE LAST. WE WILL BE YOUR BEST DEAL!**