

WHERE CAN I FIND?

Through reader feedback, this interactive column is dedicated to helping readers locate retail merchandise that's difficult to find. If you know where a product is sold or service is available, call (248) 201-2555 and leave a message with your name and phone number. Please be patient about your requests and feedback; we receive an overwhelming number of phone calls. Also, please spell any uncommon items. If you don't see information about your request, we couldn't find it. Requests are published twice.

WHAT WE FOUND

Women's leather driving gloves can be purchased at Hands on Leather in Plymouth (734) 459-6560.

The You Are Special red plate can be found in the Chinaberry catalog (800) 776-2242 located in Spring Valley, CA.

The You Are Special plate can be purchased at the Bon Ton shop on Farmington Road in Farmington (248) 474-0420 or at Six Mile Road and Newburgh in Livonia, (734) 464-6890.

Color forms for children can be purchased at area Target stores or teacher stores in your area.

Roman cleanser bleach is sold at Holiday Market on Cherry Hill and Lilly roads or at Hiller's or Mike's Markets.

FIND AND SEARCH

A reader has a Hammond electric home organ to donate

By Sandi Jarackas

to charity in good condition.

A reader has men and women's bowling trophies to donate to a charitable organization.

WHAT WE'RE LOOKING FOR

Looking for someone to do an alteration in their home reasonable Livonia area for Shirley.

A store that sells Maybelline limited instant summer self-tan for West of Westland (formerly sold at Kmart.)

A store that sells Pancez (formerly sold at Kitchen Glamour) for Fyffills.

A store that sells fresh phyllo pastry for Janice.

Someone to repair costume jewelry for Eleanor.

A store that sells Fluoride for Nails for Sue.

A store that sells canvas material to make awnings for John of Troy.

A store that sells china place cards for Kelli of Clawson.

A store that sells Harlick's matted for Linda of Rochester.

A store that sells a cordless iron for Kim.

A store that sells a putting green for the backyard.

A store that sells Norma Virgin lipstick in Clearly Cherry for Anita.

An instruction book for a Montgomery Ward sewing machine for Laura.

Adolph's no sodium unsalted tenderizer in a jar for Mrs. E.

Southeastern Washington is photogenic

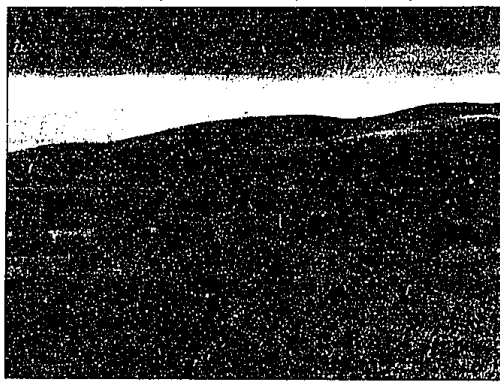
Looking for an unusual place to photograph right here in the United States that's very scenic, very photogenic and many people are not aware of? It's called the Palouse district and is located in the very southeast corner of Washington state spilling over a bit into Idaho.



Focus on Photography

Monte Nagler

This is fertile farmland that produces wheat, lentils, peas and other numerous crops. What makes the Palouse so unique is the topography of the land. Never have I seen such rolling, hilly farmland with checkerboard patterns resembling a favorite quilt. The towns are small, yet charming and the locals very friendly and helpful in finding picturesque spots. Early morning and late afternoon light are best because of the dramatic shadows produced. Lenses required: a wide angle to strong telephoto, even reaching out to 300mm. The wide angle gives the overall "feeling" of the Palouse while the telephoto enables you to isolate a particular landscape feature that often will become an abstract image. A tripod is a must in order to get everything sharp and in focus especially with the telephoto lens. I suggest getting a car and wander. This



While exploring the old dirt roads of the Palouse, I chanced upon this road, which resulted in the photograph shown here.

is how I found most of my pictures there. Get off the highway and explore along the old dirt country roads. You'll be pleasantly surprised at what you'll find.

Monte Nagler is a fine art photographer based in Farmington Hills. You can leave a message for him at (734) 953-4207.

GARDEN WALKS AND TOURS

Franklin Garden and plant lovers can enjoy the 2003 Franklin Garden Walk 10 a.m. to 4 p.m. and 6-9 p.m. Wednesday, June 18. Organizers have scheduled some of the area's finest gardens as this year marks the club's 50th anniversary. Three estate gardens, each over 5 acres, will be included in the walk this year. Tickets are \$8 presale and \$10 the day of the walk. Tickets can be bought at the Apple Tree Room Boutique in Franklin, or ordered by mail by sending a check, payable to W.H.F. & G.A. Franklin, Branch, P.O. Box 250194, Franklin, MI 48025-0194. The club also will host a buffet salad lunch at the Franklin Community Church at two sessions, 12:30 a.m. and 12:30 p.m. Lunch tickets are \$8; limited seating of 200. If ordering by mail, please specify lunch seating. On the day of the walk, tickets will be sold at the Franklin Village Gazebo on the west side of Franklin Road between 13 and 14 miles (next to the Franklin Community Church). There will be a Gazebo Boutique featuring baked goods, decorative garden items and art of various great vendors.

For information, call the Garden Walk hotline at (248) 651-2668.

Rochester Hills The Rochester Hills Museum at Van Hoesen Farm and the Women's National Farm and Garden Association will host a Garden Walk 10 a.m. to 4 p.m. Thursday, June 19. Tickets are \$10 in advance, \$12 the day of the event. For an additional \$15, lunch will be available at the Paint Creek Cider Mill in Goodison 11 a.m. to 2 p.m. Tickets are now on sale at the museum, on Van Hoesen Road off Tenken, 1 mile east of Rochester Road. They also may be bought by telephone with a credit card, or by check made payable to the City of Rochester Hills and mailed to 1005 Van Hoesen Road, Rochester Hills 48306. The featured gardens were chosen to inspire and delight visitors with what grows in the back yards of residential areas. For more information, contact the museum by calling (248) 656-4663 or e-mail, rmuseum@rochesterhills.org, or visit its Web site at www.rochesterhills.org/museum.htm.

Lathrup Village The Lathrup Village Home & Garden Tour will take place 10 a.m. to 4 p.m.

Saturday, June 21. Tickets are \$12 in advance, \$15 the day of the tour. Seniors are offered a discounted entry price of \$8. Ticket vouchers are available at the Lathrup Village City Offices, 27400 Southfield Road, three blocks north of I-96, between 11 and 12 mile. This year's tour is the eighth event co-sponsored by the Lathrup Village Historical Society and the Village Gardeners. It is an opportunity to view the interiors of five of Lathrup's most interesting homes and visit four beautiful private gardens on a self-guided tour. The newly expanded Children's Garden and Historic Community Congregational Church will also be part of the tour. Proceeds support beautification projects throughout Lathrup Village. A Garden Boutique will offer plants, garden statuary, unusual garden accessories and original art from local artists. It will be at the gazebo in the park adjacent to the Municipal Building on Southfield Road. The Young Astronauts will operate a Garden Cafe, selling refreshments as a fund-raiser.

Southeastern Oakland County Resource Recovery Authority volunteers will staff display tables during the day with information on tree and flower selection, composting, garden maintenance and lawn care. Master gardeners volunteers will be in each of the gardens and in the boutique to answer questions and assist guests. Call Pat Gore at (248) 559-0488 or Richard Reeves at (248) 569-5610 for tickets or tour information.

Canton The Canton Garden Club presents its fifth annual garden walk, "Petals and Paths." Tour six lovely gardens 10 a.m.-4:00 p.m., rain or shine, Saturday, June 28, 2003. Tickets are \$6 pre-sale and \$7 on the day of tour. Tickets may be purchased from Keller and Stein, 4258 Michigan, (734) 397-0800; Grayes Greenhouse, 8820 Lilley, (734) 453-1220; Mary's Farm Market, 47453 Ford Road, (734) 981-2546; and Backyard Birds, 627 S. Main (734) 416-0600. No strollers please. For information, contact Judy Bloomquist at (734) 455-8283.

Does Great Furniture and Artwork as well!

NOW! Is a great time to BUY or SELL!

See our ever changing selection of Furniture, Art & Accessories

Peter Mat Serigraphs Hendren Neoclassique

COME ON BY, CALL US, OR CHECK OUT OUR WEBSITE

(248) 681-6120

Waterford Place Plaza 3671 Highland Rd. Waterford, MI 48329

American Blinds, Wallpaper & More FACTORY OUTLET

AMERICA'S #1 CHOICE FOR BLINDS & WALLPAPER

Save 25% to 85% Off most retail store prices!

Plus! SAVE UP TO \$100.00

FREE MEASURING & INSTALLATION*

We guarantee a perfect fit when you have one of our professionally trained installers measure and install your blinds.

\$2.99 buy one, get one **FREE**

Get up to 12 MONTHS same as CASH!

1-800-701-0455

www.decoratoday.com

Always wanted Granite but thought you couldn't afford it? Don't Replace It...Reface It.

The Countertop That Fits on Top

- Save money and add value to your home.
- No demolition necessary.
- Rocksolid Granite™ fits over existing surfaces.
- Diamond polished Rocksolid™ slab.
- Heat, Scratch & Stain Resistant.

GRANITE REFORMATION

248-427-0200

30640 W. Eight Mile Rd. Farmington Hills, MI 48336

www.granitereformations.com

HOME CALENDAR

Bonsai sale Learn about growing your own bonsai and the ancient art of miniature Japanese trees at the Four Seasons Bonsai Show and Sale 10 a.m.-9 p.m. Saturday, June 14 and 10 a.m.-5 p.m. Sunday, June 15 at the Washington Square Building at Washington and

Fourth in Royal Oak. Two-hour demonstrations on growing bonsai are noon, 3 p.m. and 6 p.m. Saturday and 1 and 3 p.m. Sunday. Bonsai, pots, tools and accessories for sale. Admission is \$3. Children under 12 free. The event is held in conjunction with the Royal Oak Clay & Glass Show. For more information on the bonsai show, visit the Four Seasons website at: www.gocities.com/fbscm/ or contact Todd Renshaw, (248) 585-9916.

Beautiful boxes See how easy it is to turn a plain box into a beautiful work of art in Fabric-covered Boxes, a hands-on workshop taking place Thursday, June 19, at Haberman Fabrics, 955 S. Main in

Royal Oak. Fee is \$20. Use your finished box to wrap a gift, or let it be a gift. Registration and payment are required in advance. Space is limited. For information, call (248) 541-0000 or visit www.habermanfabrics.com.

School of Gardening Learn how to add drama, evening appeal and security to a garden in Lighting the Garden, a class offered by the Michigan School of Gardening. The two-session class begins Tuesday, June 17, at Goldner Walsh Nursery, 559 Orchard Lake Road in Pontiac, south of Square Lake Road and east of Telegraph. It will feature an overview of the various night lighting systems that are available, and recommendations regarding fixtures, placement and maintenance. Fee is \$69. Register early. Seating is limited. For more information, call (248) 4-GARDEN or visit www.michigangardening.com. The School of Gardening also offers specialty classes and classes for the certificate of landscape and garden design at The Community House, 380 S. Bates in Birmingham, west of Woodward and south of Maple. For information or to register, call The Community House at (248) 644-5832. This schedule includes Reserving Your Garden Fresh, Wednesday, June 18. Fee is \$20.

If you have an item for the calendar, please submit it at least two weeks in advance of the date it should be published. Send to Ken Abramczyk, At Home editor, Eccentric Newspapers, 805 E. Maple, Birmingham, MI 48009 or e-mail kabramczyk@e-home.com.net.

Blue-Dot

ALL MAJOR BRANDS

FREE 24 HOUR 1-800-243-2434

A/C • Heating • Plumbing • and more

FREE Furnace Filter Shipping! **CALL TODAY! (800) BLUE-DOT**

CLEAN AIR SAVINGS \$75 OFF

WHOLE HOUSE DUCT CLEANING

with FREE Duct Vent Cleaning (a \$225 Value)

TRADE-IN REWARD \$600 OFF

TRADE IN YOUR OLD EQUIPMENT FOR CASH OFF A NEW SYSTEM

\$300 OFF A/C or Heat Pump Trade-In \$300 OFF Furnace Trade-In

SERVICE SAVINGS FREE

A/C, HEATING, OR PLUMBING SERVICE CALL

With Repairs (a \$50 Value)

Blue-Dot

248-427-0200

30640 W. Eight Mile Rd. Farmington Hills, MI 48336

www.granitereformations.com

KITCHEN REACING

FREE ESTIMATE

- New Available Materials
- Granite Countertops
- The Leader in Cabinet Refacing
- Painting Cabinets
- Shook from Water Damage
- Build Out, Upgrade, Replace
- Reduction in your neighborhood

cabinet clinic