

## WEST FARMINGTON

Mrs. Irvin Knapp  
PHONE 4094

Ivan Graham, who has been very sick, is slowly improving. Mr. and Mrs. George Heliker attended a surprise dinner party Sunday at the home of Mr. and

Mrs. Charles Graham of Keego Harbor, in which quite a number of relatives joined.

Quite a number from here went to hear "The Shields Trio" at Walled Lake on February 7. This was the third number of the Lyceum course sponsored by the Walled Lake P. Y. A.

Frank Walters is with the mechanics crew going to Bay City for the State endurance flight. The Parent-Teacher Association of Walled Lake Consolidated School will hold a party, with cards and dancing at Hickory Hill Clubhouse, Friday, February 15th.

William Kurz, Harvey Robison, John Tamm and sons attended the Father and Son banquet held at the Evangelical Church, Farmington, Tuesday night.

The Extension group held their meeting at Mrs. Hill's February 7 with fourteen present. The lesson on meal-planning and calories proved to be of much interest. The group will hold a meeting at Mrs. Charles Halsted's February 27. A well-balanced meal will be served, Mrs. Clara Green acting as host and Mrs. Emma Marsh as hostess.

Leona Tamm spent Tuesday with her grandparents, Mr. and Mrs. John Tamm.

Mrs. Irvin Knapp, who is in Harper Hospital, is rapidly recovering.

## SIXTEEN FACTORIES AT WORK ON CHEVROLETS

With the demand for its cars at the highest level in the history of the company, the Chevrolet Motor Company is preparing for the greatest year in its history with its sixteen giant factories now busy on a 1,250,000 car production program for 1929.

This statement was issued here this week by R. El Beckley and R. J. Nicholson, local Chevrolet dealers, who recently attended at Detroit the tenth of a series of 40 nationwide sales meetings that are being sponsored by the company this winter and spring. The day's program which embraced a graphic sales presentation in the Orlo Theatre in the afternoon and a banquet in the Statler Hotel in the evening, was one of the most elaborate ever attempted by an automobile manufacturer.

Talks were illustrated in the form of playlets, depicting the proper procedure to be followed in the successful operation of a retail automobile business. More than a carload of scenery, drops and special fixtures were used to stage the afternoon meeting.

## NEW OAKLAND MODEL

A new model supplementing the other seven passenger types in the latest line of Oakland All-American Sixes is announced today by the Oakland Motor Car Co. Known as the Special Four-Door Sedan, the new car is built to take the place of the Landau Sedan in the previous All-American series.

While following in exterior design the regular 4-door sedan, the new model carries luxurious interior equipment and refinements as well as striking new exterior Duro combinations.

Send in your news items.

## How the Useful Plants Came to Mankind

By T. E. STEWARD  
WNU Service

## Hemp

HERODOTUS, who was born in 484 B. C., wrote that the Scythians, a wild people living north of the Black sea, used hemp, but in his time the Greeks were already acquainted with it. Early kings of Syracuse and other maritime ports of Greece recorded that they purchased hemp for their vessel cordage, showing that they did not raise it. Herodotus makes no mention of hemp and it was not used in the fabrics which covered the mummies of ancient Egypt. Even at the end of the Eighteenth century it was raised in Egypt only for the sake of an intoxicating liquid extracted from the plant. The Toland, a compilation of Roman documents, speaks of the textile properties of hemp as if they were little known.

Probably the Scythians brought this plant into eastern Europe from Central Asia when they migrated westward about 1500 B. C. a little before the time of the great Trojan war. It may also have been introduced by the earlier incursions of the Aryans into Thrace and western Europe, though it would seem that it should have been known in Italy long before the time of the great Trojan war. It may also have been introduced by the earlier incursions of the Aryans into Thrace and western Europe, though it would seem that it should have been known in Italy long before the time of the great Trojan war.

Modern botanical observations of wild hemp verify the deductions from history and literature. It has been found wild, beyond a doubt, south of the Caspian sea, in Siberia, beyond Lake Balkal and elsewhere in Central Asia. In many populous regions of southern Russia it is called wild hemp, and as these districts are populous, and hemp has been grown in them for many centuries, it is difficult to say whether it is actually wild or has escaped from civilization.

Jute, which has the same uses as hemp, is widely dispersed in Africa, the warm regions of Asia, and Central and South America. Thus the origin of the several species of this genus are difficult to trace. It may be native to each of them. The likelihood is, however, that it is an Asiatic plant that has been introduced into Africa and America. It is common in Ceylon in a wild state and has been found growing wild in Java.

Until the growth of the tremendous Western cord and bag industries jute manufacture was carried on chiefly in southern Asia, particularly in Bengal.

(© 1928, Western Newspaper Union.)

## Oakland THEATRE PONTIAC

STARTING SATURDAY, FEBRUARY 16

The Screen Sensation of All Time  
The World's Greatest War Drama of the Air

## "WINGS"

with

## Clara Bow

Charlie (Buddy) Rogers, Gary Cooper and Richard Arlen

See the men who fought for freedom in the skies. The women who loved them

NEVER BEFORE SUCH A SPECTACLE

Make your date now for—"WINGS"

## Order Now!

## Vegetable Plants

CABBAGE  
CAULIFLOWER  
CELERY  
EGG PLANTS  
ONIONS  
PEPPERS  
TOMATOES

## Bedding Plants

ASTERS  
AGERATUM  
CALEBULUS  
CALENDULAS  
CENTAUREA  
LOBELIA  
MARGOLDS  
PETUNIAS  
PANSIES  
SNAPDRAGONS  
SALVIA  
SCABIOSA  
VERBENA  
ZINNIA

"Say It with Flowers"

## Sutherland Greenhouses Inc.

Phone 524-W

Member F. T. D.

We Deliver

Ann Arbor Road., Plymouth, Mich.

2-14

## LIGHT

## Do You Get All You Pay For?

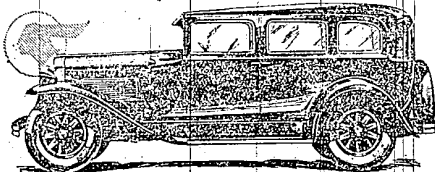
The useful life of an incandescent lamp is approximately 1000 hours of illumination. Further use results in diminishing efficiency. Lamps giving less than their normal candle power are frequently found in use.

Accumulation of dust on shades and reflectors may waste from 30 to 40 per cent of the light. Regular inspection (and cleaning) will eliminate this loss. Walls and ceilings, when dark and sooty, may absorb from 50 to 75 per cent of the light falling on them. Paint and water corrects this defect.

A telephone call will bring one of our illuminating engineers for an inspection of your lighting. This is part of our service.

THE  
DETROIT EDISON  
COMPANY

## Big in every way except in price



The 4-Door Sedan, 1929, Body by Fisher

A GREAT FURORE is being created in the automotive world these days. People are all agog about a new low-priced six that offers every desirable big car quality. It is the New Pontiac Big Six.

Since the Pontiac Big Six went on display, men and women of every type have been

coming to see and drive it. But most of the buyers belong to one particular group. They have taste. They love fine things.

They want to step up the quality of their automobiles—and the New Pontiac appeals to them—for it's big in every way except in price!

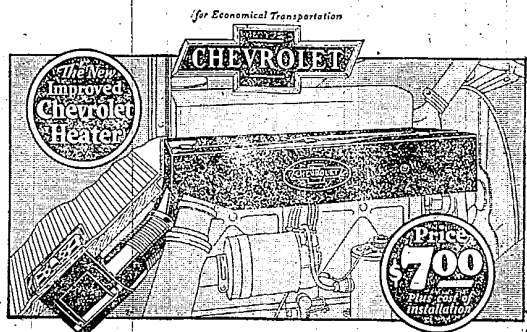
Prices \$145 and up, f.o.b. factory, plus delivery charges. Bumpers and rear fender guards regular equipment at slight extra cost. Check Oakland-Pontiac delivered price—they include lowest handling charges. General Motors Time Payment Plan available at minimum rate.

## Oakland-Pontiac Sales

Phone 337

Farmington

THE NEW  
PONTIAC  
BIG SIX  
at \$745

PRODUCT OF  
GENERAL MOTORS

## Chevrolet Owners—Here is Winter Comfort at Bargain Prices!

## SPECIAL 15-POINT WINTER TUNE UP

1. Install New Improved Chevrolet Heater
2. Clean all spark plugs and set gap for proper clearance for winter driving.
3. Tight up all adjustment breaker points to proper clearance for winter driving.
4. Check and adjust ignition timing.
5. Adjust valves.
6. Drain carburetor.
7. Clean carburetor screen.
8. Adjust carburetor for winter driving.
9. Tighten linkage manifold bolts.
10. Check and tighten water hose connections.
11. Adjust fan belt to proper tension.
12. Grease water pump.
13. Clean generator commutator.
14. Adjust generator belt for proper driving.
15. Road test car.

all for

including all material and labor.

A car that is snugly warm when the snow flies... that starts with ease and certainty on the coldest mornings... that runs smoothly and efficiently when the thermometer is at zero—that means winter motoring comfort... and the only way to enjoy it is to make sure that your car is ready for winter!

Our special 15-point service combination covers the routine service you need to prepare your car for winter—at a big saving to you. It includes a complete winter tune-up, special cold weather adjustments, and the installation of a Chevrolet heater.

The New Improved Chevrolet heater included in this combination was designed by Chevrolet engineers especially for the Chevrolet car. It supplies enough heated air every two minutes to fill the average Chevrolet body (at 30 miles per hour)—and it is easily adjustable while you drive. Bring your car in today—before the winter rush is on!

## Farmington Motor Sales

Phone 303

Grand River Ave., Farmington

QUALITY AT LOW COST