

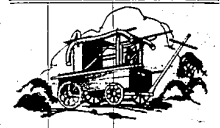
SPECTATORS GET WET AS A DIVING TOWER FALLS

Between thirty and forty people received a closer view of contestants in a swimming race, and a ducking along with it when the diving tower at the Finnish-American Camp on Sun Lake toppled in the water. The weight on the tower was too great, causing the fall. The depth of water in front of the tower, about 25 feet, saved possible serious injury. Only one man was injured, being cut slightly about the face.

KEEP YOUR BEAUTY

Wrinkles appear all too quickly—little tell-tale marks of age arrive. Let our expert beauty culture keep your complexion fresh, youthful and beautiful.

ELSIE YOUNG BEAUTY SHOP 236 Grand River—Phone 371



Oldest Fire Engine in America

Built in London in 1858 and brought to Bellefonte, Pa., in 1763... what experience it could relate today!

Edgar S. Pierce "Everything in Insurance" Phone 9 Farmington

CHURCHES

Baptist Church Rev. E. W. Palmer, Pastor 10:30—Morning worship. Sermon theme, "Service Rewarded."

St. Paul's Evangelical Lutheran Church, Clarenceville (at Seltzer Road) Rev. Paul Graupner, Pastor 9:30—Sunday School. 10:30—English service. Parochial Day School every school day from 9 to 3:30.

Evangelical Church Rev. A. A. Schoen, Pastor Fifteenth Sunday after Trinity. Sunday School hour, 10 to 11 a.m.

Our Lady of Sorrows Church Rev. James A. Callahan, Pastor Sunday masses at 7 a. m., 8:30 a. m., and 11 a. m. (Summer schedule). Daily mass at 8:00.

Clarenceville M. E. Church Rev. Robert Richards, Pastor 10:30—Morning worship. 11:30—Sunday School. 7:30—Evening service.

Methodist Church Dr. H. Addis Leeson, Pastor The Quarterly Communion service will be observed on Sunday morning. It will be conducted by Dr. Leeson the pastor and the choir will offer special musical numbers.

by" evening—this famous hymn writer, who was totally blind all her life, contributed more than 5,000 hymns to the church. Many of them are the most popular and frequently sung of any of any of the church hymns.

MORE THAN SIX BILLION WASHERS NOW IN USE

Extreme shortage of domestic servants has sent the American housewife into the market for every kind of labor-saving household device. In 1928 she invested \$108,000,000 in electrical washing machines and \$18,000,000 for gasoline engine-operated machines. The number of electrical machines bought last year was 809,884 and about \$60,000 more will be in stalled this year, bringing the national total up to more than 6,000,000.

By early in 1930 a total of a billion dollars will have been appropriated from the family exchequer for the cause of immaculate, fresh, sweet-smelling garments, cleaned and returned in the home.

"The American home is growing smaller in size, and each year it is being more intelligently arranged and equipped," says Silas H. Altorfer, heading the company that makes ABC washers, sold in this territory by Farmington Hardware Co.

"Newspaper advertising has gone far in educating the housewife in the art of expert buying. At the end of 1928 there were 17,700,000 electric irons in use in American homes. Vacuum cleaners numbered 7,700,000, electric toasters 5,325,000, electric refrigerators, 1,223,000. Electricity is being turned to use faster in the American home than anywhere else in the world. More than 1,000,000 new residential users were added in 1928. In 70 per cent of the newly wired homes, the electrical washer is the first important appliance adopted to cut labor and confusion.

"Washing can now be washed clean, quickly and effortlessly in a smooth porcelain tub. The modern principle of spinning clothes dry in a centrifugal water extractor is finding great favor. New methods of washing make it possible to hang the clothes on the line in the sunlight and fresh air much earlier than old methods permitted. Satisfaction of home laundering with its guarantee of weather conditions is one reason why one wired home of every three in the United States has an electrical washing machine."

Lines in the Enterprise bring quick results.

COMMISSIONERS' PROCEEDINGS

Regular meeting of the Commissioners of the City of Farmington, held September 4, 1929.

Called to order by Mayor Lamb at 7:50 p. m. Commissioners present, Stanton, Hogle, Gildemeister, Otis and Hatton.

Minutes of the meeting of August 19 read and approved.

The following bills were read and approved by the Auditing Committee:

Table listing bills and amounts: American LaFrance and Pompile Co. \$16.50, Bell Telephone Co. 4.65, Hunter Machinery Co. 21.90, Clyde H. Adams 4.25, Charles O. Lueke, gravel for cemetery 128.00, Park Garage 14.25, Standard Oil Co. 5.16, Sinclair Refining Co. 2.08, Olin Russell 10.00, Lee Hardware Co. 33.36, Good's Service Station 2.70, Earl's Electric Shop 5.00, Auto Shop 3.13, Earl G. Vivier 13.54, American Legion, band Labor Day 112.20, Farmington Lumber & Coal Co. 203.50, Farmington Enterprise 18.15, Amos Otis, signs 20.65, Amos Otis, labor at cemetery and use of cement mixer 156.69, Farmington Hardware 43.21, Novi Supply Co. cement for cemetery 130.00, Detroit Edison Co. 694.14. Moved by Hatton, seconded by Otis, that bills be paid as read. Carried. After a brief discussion of the various departments of City affairs the Commission adjourned. N. H. POWER, City Clerk.

CLOSED TO DEER-HUNTING

Antrim County was closed to deer hunting for a period of two years from November 15, 1929, by the recent action of the Conservation Commission at its August meeting.

This order was prompted by the action of the County Board of Supervisors of Antrim County in requesting conservation authorities to provide a two-year period for protection to the white-tailed deer in that territory.

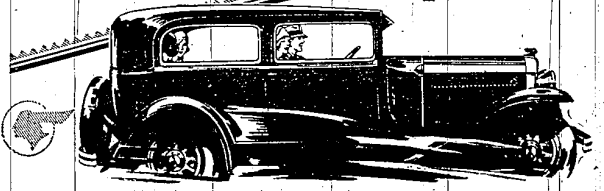
The Oakland Motor Car Company maintains special training schools with model service shops where Oakland-Pontiac mechanics are given free instruction.

Lines in the Enterprise bring quick results. A small investment gets big returns. Send in your news items early.

We Repair Any Kind of Shoes! Whether it be soles and heels for heavy, solidly-built work shoes for use on the farm or in many kinds of labor, or just straightening dainty heels on "Mildy's slippers"—we can do the job and do it right. Expert workmanship marks every bit of repair work done here. Boston Shoe Repair Shop THOMAS JAMES, Prop. E. C. Grace Store—Farmington

Who's Who and Where Do They Insure? We might show in this advertisement a list of prominent business and industrial concerns known throughout Michigan—may of them all over the United States—BUT the list would be too long! It looks like a "who's who" of Michigan business—and every one are insured with Michigan Mutual automobile fleets and personal cars. These concerns buy insurance by closest comparison. They chose "Michigan Mutual" against the field—and so will you when you know the facts about insurance values. Lawrence R. Taylor Phone 144 Representing MICHIGAN MUTUAL LIABILITY CO.

For Speed, Power and Pickup—a Six without a rival at its price



PONTIAC BIG SIX at \$745

Without a single exception, the Pontiac Big Six is the fastest, most powerful six of its price available today. Its sturdy, 200 cubic inch, L-head engine develops 60 horsepower at moderate engine speed. Its speed and acceleration are the fastest to be found in any low-priced six, according to the "fifth wheel"—the most accurate speed measuring device known to automotive engineers. Unquestionably, today's Pontiac Big Six is the performance leader of its price field—and the style and value leader as well.

Consider the delivered price as well as the list (f. o. b.) price when comparing automobile values. Oakland-Pontiac delivered prices include only authorized charges for freight and delivery, and the cost for any additional accessories or financing desired.

Oakland-Pontiac Sales FARMINGTON, MICH. PHONE 337



Facts that prove the Value of The New CHEVROLET SIX

The new Chevrolet Six is shattering every previous record of Chevrolet success—not only because it provides the greatest value in Chevrolet history, but because it gives you more for the dollar than any other car in the world at or near its price! Facts tell the story! Modern features afford the proof! Read the adjoining column and you will know why over a MILLION careful buyers have chosen the Chevrolet Six in less than eight months. Then come in and get a ride in this sensational six-cylinder automobile—which actually sells in the price range of the four!

Table showing prices for Chevrolet Six models: The \$595 COACH, The Roadster \$525, The Sedan \$695, The Phaeton \$525, The Light Six \$400, The Coupe \$595, The Sport \$645, The Sedan \$675, The Imperial Sedan \$695, The Sedan Delivery \$595, The Light Six Delivery \$400, The Six Ton Chassis \$545, The Six Ton Chassis \$650.

All prices f. o. b. factory, Flint, Michigan

Farmington Motor Sales Phone 303 Grand River Ave., Farmington

Remarkable Six-Cylinder Engine Chevrolet's remarkable six-cylinder engine impresses you most vividly by its exceptionally smooth performance. At every speed you enjoy that silent, velvet-like flow of power which is characteristic of the truly fine automobile. Beautiful Fisher Bodies With their low, graceful, sweeping lines and smart silhouette, their ample room for passengers and their sparkling color combinations and rich upholstery—the new Fisher bodies on the Chevrolet Six represent one of Fisher's greatest achievements. Outstanding Economy The new Chevrolet Six is an unusually economical car to operate. Not only does it deliver better than twenty miles to the gallon of gasoline, but its oil economy is equal to, if not actually greater than, that of the famous four-cylinder predecessor. Remarkable Dependability In order to appreciate what outstanding value the Chevrolet Six represents, it is necessary to remember that it is built to the world's highest standards. Its design, its materials and in workmanship—it is every inch a quality car! Amazing Low Prices An achievement no less remarkable than the design and quality of the Chevrolet Six is the fact that it is sold at prices so amazingly low! Furthermore, Chevrolet delivered prices include the lowest financing and handling charges available.

A SIX IN THE PRICE RANGE OF THE FOUR