

# Driver's Test At Auto Show

An audience participation game which tests the driver's knowledge of Michigan's traffic laws will be the centerpiece of the Chrysler-Plymouth exhibit at the Detroit Auto Show November 20-28 at Cobo Hall.

The exhibit will also feature a Plymouth Duster which has been cut in half longitudinally to show its safety features and rugged construction, an engine display which demonstrates progress in reducing engine emissions, and a "police car of tomorrow," a specially-equipped Plymouth Fury.

The "know your traffic laws" test is a mechanized, multiple-choice examination in which participants exercise the various options presented by a variety of traffic situations. Each person taking the test will receive a free key chain inscribed with the slogan, "Traffic Laws Protect You. Obey Them."

Show goes visiting the exhibit will get tips on everything from tuning a car to competitive driving from the famed drag race team of Ronnie Sox and Buddy Martin.

who will be on hand to greet the public, display their race car, a Plymouth Road Runner, and answer questions during the full run of the show.

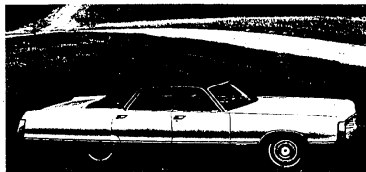
Last September, the Sox and Martin team won the Pro Stock Eliminator title at the National Hot Rod Association national drag meet at Indianapolis. In August they won the Super Stock Eliminator championship at the International Hot Rod Association Summernationals at Bristol, Virginia. The team also won Pro Stock

Eliminator at the NHRA Grand National at Montreal in August. They were also winners at the NHRA Springnationals at Dallas last June.

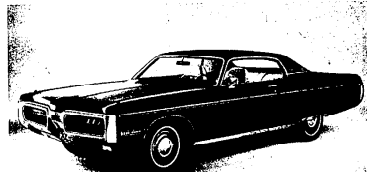
Sox and Martin have dominated the major drag race events in recent years. In 1969 they became the first team to win the super stock eliminator title in the NHRA's three major meets of the year.

Chrysler-Plymouth will display 31 1972 cars on the floor and four on turntables. The turntable cars will be the Plymouth Cricket, Plymouth Fury, Chrysler New Yorker, and Chrysler Imperial. On the floor will be two Plymouth Dusters, one Plymouth Valiant, one Plymouth Scamp, two Plymouth Barracudas, six Plymouth Satellites, eight Plymouth Frys, eight Chryslers, and three Imperials.

On hand to describe the cars, discuss the special exhibits, and conduct the "know your traffic laws" test will be 24 pretty young girl models and two men.



**LUXURY LEADER** -- The New Yorker Brougham is a new luxury leader for Chrysler in 1972. New Yorker and Brougham in 4-door sedan, and 2 and 4-door hardtops. Standard on Brougham: 50-50 split bench seat, power windows. On both: power steering, power front disc brakes and automatic transmission.



**FRESH LOOK** -- The 1972 Plymouth Fury Gran Coupe two-door hardtop is one of 16 models offering luxury looks and comfort with an economy price tag. Wheelbase: 120 inches; overall length: 217.2 inches. Standard engine: 318 V-8.



**LONG, LOW and LUXURIOUS** -- The Chrysler Imperial LeBaron enters 1972 as an all-new luxury car with simplified but elegant lines. In two and four-door hardtops. Wheelbase: 127 inches. The standard engine is a 440-cubic-inch V-8.



**MORE "CHIRP"** -- Plymouth's subcompact Cricket has increased H.P. (Horsepower) for 1972 with an optional twin carburetor system for its 4-cylinder, 91.4 cubic-inch (1500 cc) engine. New, also, are: an automatic choke for the standard engine, vinyl roof, and a list of bright colors. Arrived in two-door sedan.

**1971 FURY III's**  
2-door & 4-door Hardtops, 8 Automatic, Factory Air, Tuned Shocks, Vinyl Roof, Body Side Moulding, White Walls, Power Steering, Power Disc Brakes.  
**\$3,095**

**1971 SATELLITE STEERING**  
**\$2,895**

**1971 IMPERIAL LeBaron**  
**\$12,895**

**OUR SALESMEN ARE SHARPENING their PENCILS**  
for the BEST DEALS EVER on  
**DEMOS**  
and  
**FACTORY OFFICIALS CARS**  
All with Radios

**"LIVONIA'S TRANSPORTATION CENTER"**  
DIVISION OF THE  
LIVONIA TRADING COMPANY