

THERE'S MORE TO CHRISTMAS AT CROWLEY'S



THE PANT COAT IN

LEATHER is the smart look of town 'n country. Belted, 5-buttoned, with 4 patch pockets, strapped sleeve and contrast stitching. Black, pecan, or brown for sizes 8 to 16. **\$85**

SHEVELVA®: LONG ON

SOFTNESS in Dacron® polyester fleece with the velvet touch. Concealed zipper under contrast banding, hidden seam pockets. Indiglow, wineberry, kumquat. Sizes 8 to 18. **\$25**

AN OLD-FASHIONED GIRL,

BIG OR LITTLE will spend a wonderful holiday in our dainty polyester/cotton flocked voile with fitted bodice, long, full, ruffle-trimmed skirt. Pink for:

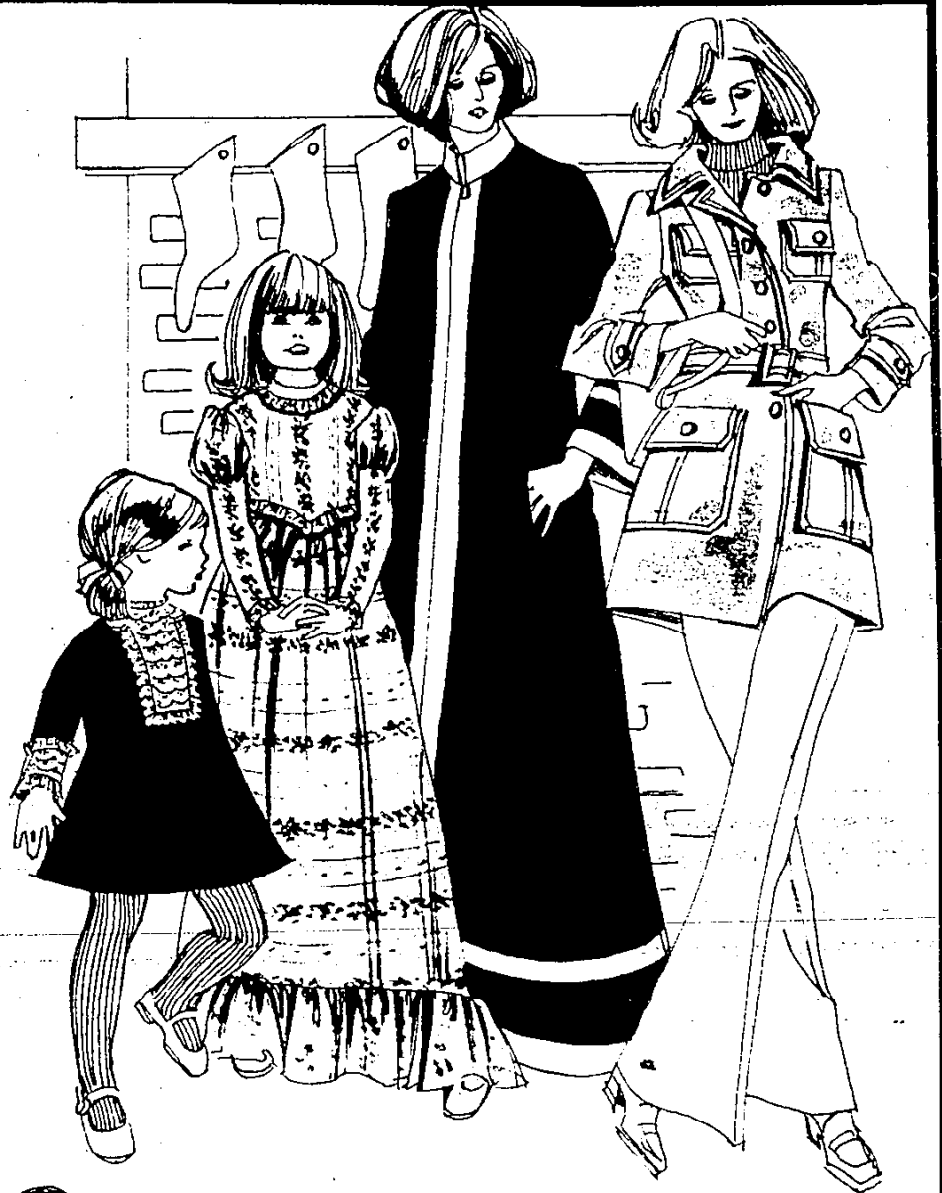
Size 3 to 6X, **\$13**; 7 to 12, **\$15**

HOLIDAY-BOUND DRESSES

FOR GIRLS are done in bonded Orlon® acrylic with party-looking lace bib insert and wide lace cuff on purple, red or navy. Machine washable, too, for:

4 to 6X, **\$9**; 7 to 14, **\$10**

Coats (# 36); Loungewear (# 66); Children's and Girls' Wear (#56, #58): Street Level.



JACKETS GO

SKIING in weightless warmth. Polyester-filled nylon lined nylon is Wear-Dated®, too. Navy, powder of mauve for small, medium or large. **\$28**



SWEATERS FOR

WOMEN were full fashioned just for Crowley's, in washable Acrylic. Choose powder, navy, bone or white; sizes 38-40-42.

\$13



Better Sportswear (#42).
Street Level.

