

CHURCHES

Our Lady of Sorrows Church
Rev. John J. Larkin, Pastor
Sunday masses at 7:00 a. m., 8:30 a. m., 10:30 a. m. and 12:00 noon.
Benediction after 10:30 mass.
Daily masses at 7:30 a. m. and 8:00 a. m.

Salem Evangelical Church
Rev. W. Bretschach, Minister

Sunday, Sept. 9, 15th after Trinity. Services at 10:30 A. M. The pulpit will be filled by Mr. A. G. Leonard. His subject will be "The Church and Civic Duties." The public at large is heartily invited to hear Mr. Leonard at this occasion.

Earl L. Phillips



Republican Candidate
For
**CIRCUIT COURT
COMMISSIONER**
Oakland County

Practicing Attorney in Oakland County for past 15 years.

- He has—
1. A good record.
 2. Sound judgment.
 3. Broad experience

Sunday School 11:30. Wm. Maa, Superintendent.

Methodist Church
Rev. F. A. Lendrum, D. D., Minister

Worship at 10:30 a. m. "Gearing In" will be the sermon theme. The morning anthem by the choir and an offertory solo "I Shall Not Forgetten Be" by Miss Gertrude Richardson.

Church school 12 noon—class for every need. The men's organization will get under way. The Epworth League will meet in the dining room at 6 o'clock for a "supper meeting." Luke 15 will be studied, and Miss Olive Grimwade will lead.

If you have no regular church home you are invited to worship with us.
Tuesday, September 11, the Garden Club will meet in the Church House, and the Ladies' Aid Society will serve a supper, beginning at 5 p. m. The public is most cordially invited.

Church of God

Services held in the Little White Church on Warner Avenue just north of Grand River.
Sunday School at 10 a. m.
Church at 11 a. m.
Prayer meeting on Thursdays at 7 p. m.
Bible study at 7:30 p. m.
Church service at 8:00 p. m.

"And the times of this ignorance God winked at; but now commandeth all men everywhere to repent."
"Repent and be baptized—and ye shall receive the gift of the holy ghost."

Clarenceville Methodist Church
Rev. Leon, Minister

The Fall Services will be resumed next Sunday at the Clarenceville Community Church, preaching services at 10:30 and the Sunday School will convene at 11:30. The Rev. O. J. Lyon will speak on the subject "The Challenge of the Church."

The annual election of officers in the Sunday School will occur on Monday night, September 10th at eight o'clock in the church.

GENERAL PRIMARY ELECTION

Notice is hereby given that a General Primary Election will be held in the Township of Farmington, County of Oakland, State of

Michigan, at the Town Hall, on 10th Street, between Grand and 10th Streets, No. 2, 28734 Grand River Road, within said Township, on TUESDAY, SEPT. 11th, 1934.

For the purpose of placing in nomination by all political parties participating therein, candidates for the following offices, viz:
STATE—One candidate for Governor; one candidate for Lieutenant Governor.

CONGRESSIONAL—One candidate for Representative in Congress for the Congressional district of which said Township forms a part.

LEGISLATIVE—One candidate for Senator Legislature for the Senatorial District of which said Township forms a part. One candidate for the Legislative district of which said Township forms a part.

COUNTY—Also candidates for the following county offices, viz: Judge of Probate, Prosecuting Attorney, Sheriff, County Clerk, County Treasurer, Register of Deeds, Circuit Court Commissioners, Drain Commissioners, Coroners, Surveyor.

DELEGATES TO COUNTY CONVENTIONS

There shall also be elected as many DELEGATES to the County Convention of the several political parties as said ward, precinct, or district is entitled to under the call of the county committees of said political parties, which number will be indicated by the number of blank lines printed on the official primary ballots used at said election, under the heading "Delegates to County Conventions."

The Board of Primary Election Inspectors shall certify to the County Clerk the names of the electors so elected as delegates, naming the political party upon whose ballots such electors were elected. The County Clerk shall notify by mail each person elected as such delegate.

The names of the candidate for delegate to the county convention shall not be printed upon the official primary election ballot,

but one or more such names may be placed on such ballot by printed or written slips pasted thereon by the voter, or the names may be written in by the voter.

Suggestions Relative To Voting
SEPARATE BALLOTS for each political party will be provided. The elector must name the political party of his choice when asking for a ballot and in marking his ballot, must make a cross in the square to the left of the name of each candidate for whom he desires to vote, and can vote for only one candidate except where two or more candidates are to be nominated in which case he should vote for two of the number to be nominated.

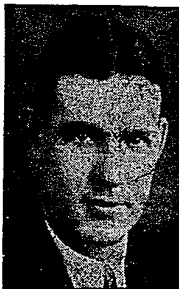
Relative to Opening and Closing of the Polls

Election Revisions of 1931—No. 410 Chapter VIII.

Section 1. On the day of any election the polls shall be opened at seven o'clock in the forenoon, and shall be continued open until six o'clock in the afternoon and no longer; PROVIDED, That in townships the board of inspectors of election may, in its discretion, adjourn the polls at two o'clock noon, for one hour, and that the township board in townships and the legislative body in cities and villages may, by resolution, provide that the polls shall be opened at six o'clock in the forenoon and may also provide that the polls shall be kept open not later than eight o'clock in the evening of the same day. Every qualified elector present and in line at the polls at the hour prescribed for the closing thereof shall be allowed to vote.

THE POLLS of said election will be open at 7 o'clock a. m. and will remain open until 8 o'clock p. m., Eastern Standard Time, of said day of election, unless the Board of Election Inspectors shall, in their discretion, adjourn the Polls at 12 o'clock noon, for one hour.
Dated Sept. 1, 1934.

WILLIARD CAMPBELL,
Clerk of Said Township.



LYNN D. ALLEN

Republican Candidate for
County Clerk
Oakland County

Pledged to Continued
Efficiency, Economy,
and Impartiality.

World War Veteran HIS RECORD AS COUNTY CLERK SHOWS:

1. That he voluntarily reduced his own salary.
2. Voluntarily consented to turn back to the County approximately \$4800.00 in fees which were formerly kept by the County Clerk, and in addition,
3. Has effected a saving to taxpayers of more than 18 per cent in the operation of the Clerk's office during his first 18 months in office, despite the passage of some 48 laws affecting and increasing the duties of his office.

Other Facts About Lynn D. Allen:

4. Operates one of the most efficient and courteous County Clerk's offices in the State of Michigan.
 5. Put a stop to the loss and misplacement of valuable County Records.
 6. Personally assisted 88 candidates for citizenship during the past 18 months.
 7. Born in Birmingham, Michigan, Bloomfield Township in 1898. Educated in Old Hill School, Detroit Central High and U. of Detroit.
 8. Well known as a clean sportsman, having been an All-State half in high school and candidate for All-American football honors in college in 1917.
 9. Enlisted in the U. S. Navy in 1918 while a student in college; served in the U. S. Submarine Destroyer fleet; honorably discharged 1919.
 10. Married; father of two children; taxpayer.
 11. Is a man of unquestioned integrity and ability, free from entangling alliances and political domination by any group or clique.
 12. Member of the Masonic, Elks, Eagles Lodges, American Legion and 40's.
- Upon the basis of Lynn D. Allen's splendid record as a sailor, athlete and County Clerk, he deserves and will be grateful for your vote at the Primaries, Tuesday, September 11, 1934.
(Written and paid for by friends and admirers of Lynn D. Allen and the things for which he stands).

REYNOLDS for SHERIFF



Roy N. Reynolds, who is completing his first term as Sheriff of Oakland County, is seeking his second term. Sheriff Reynolds, who established himself as the respectable and efficient head of this important department, seeks reelection on the Republican ticket in the primaries next Tuesday, September 11th. No time could be more appropriate than the present to review his work and record since he became Sheriff of this County January 1, 1933. Two things stand out above all others. First, he has stamped out organized gambling in Oakland County.

The guns of the racketeers are leveled at him because of his determined and persistent drive against slot machines and other forms of gambling and outlawry. Evidence of why they are waging a bitter and venomous fight against him is the stack of slot machines, gambling tables and other equipment of illicit "business" piled high behind the bars at the county jail.

He wrecked their illegal operations from the day he took the oath of office. While some of our neighboring counties continue to be "alive" with slot machines and gambling dives, this county is clean. Such a record on the part of any Sheriff is a noteworthy accomplishment.

The second outstanding fact is that the sheriff's department has been operated in this efficient manner at a saving of nearly \$50,000.00 per year under the cost of the department in the immediately preceding years. Here are the official figures:

1929	\$169,350.88
1930	186,868.78
1931	156,339.45
1932	134,489.50
1933	85,611.46
1934 (six months)	45,083.83

These figures are from the records in the Oakland County Board of Auditors offices. The net operating cost for 1933, the first year of Sheriff Reynolds' term, after subtracting the off-setting income, was \$40,518.50, or \$781.20 less than the drastically reduced budget fixed by the Board of Supervisors for the Sheriff's Department.

Let's Start Him Off

With

1,000 VOTES

LEAD
FROM

Farmington

TOWNSHIP AND CITY

Archie G.

LEONARD

OUR OWN CANDIDATE

FOR

the State Legislature--First District

OAKLAND COUNTY

BE SURE to VOTE on Primary Day--Tuesday, Sept. 11

Let's all give "Archie" a big send-off of Farmington votes

NOTE: To Vote for "Archie" Leonard's nomination for the Legislature, it will be necessary to ask for a Republican ballot, as he is a candidate on the Republican ticket. Both Republicans and Democrats of this area are enthusiastically supporting "Archie." Don't neglect to vote and give him your support.

Farmington Leonard-for-Legislature

COMMITTEE

Harry N. McCracken, Chairman

Mrs. Martha Warner, Secretary

