

JOB HUNTING? — Check Today's CLASSIFIED SECTION

True Value
BARGAIN OF THE MONTH

10-22 Cup Party Perk

Only **699**
Regular 12.88

"In-between" party serves 8-12 guests — or the family! Brews coffee, keeps it hot automatically. Color finished aluminum, stay-cool legs. Cord detaches.

MAKE A PLAIN DOORWAY INTO A COLORFUL ENTRANCE AT LOW COST

TOP QUALITY ALUMINUM COMBINATION DOORS PRE-HUNG

| | | |
|---------------------------|-------|------------|
| #500 MILL | 2"x6" | \$21.88 |
| | 2"x6" | |
| | 3"x6" | |
| #225 WHITE | 2"x6" | \$29.77 |
| | 2"x6" | |
| | 3"x6" | |
| Colonial Crossbreck WHITE | 2"x6" | Reg. 39.88 |
| | 3"x6" | \$34.88 |

LIMITED QUANTITY AVAILABLE

WOOD DECK KITS by ERECTO-PAT

Fast, Simple and Strong

Build any size up to 20x20 with one of these standard kits, or use a combination of two or more kits to complete your own design.

Each kit contains metal erecto-pat components, plans and instructions, lumber list, finishing ideas and staining information, and fasteners.

All components and brackets have a baked enamel finish.

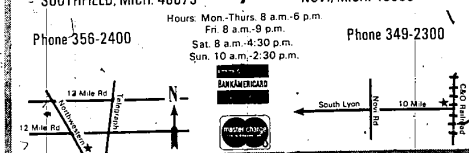
STARTING AT ONLY \$23.05

KEEP YOUR LAWN FRESH WITH THIS MID-SUMMER SPECIAL

| | | | | | |
|-------------------------------------|-----------------------------|--|-----------------------------|---------------------------------------|-----------------------------|
| SERVESS LAWN FOOD 20-10-5 | \$1.99 20 lb. Bag | Tru-Test WEED & FEED 10-6-4 Fertilizer | \$2.49 25 lb. Bag | Tru-Test Fertilizer 20-10-5 | \$2.79 22 lb. Bag |
|-------------------------------------|-----------------------------|--|-----------------------------|---------------------------------------|-----------------------------|

NOW at 2 LOCATIONS — for our CUSTOMERS' CONVENIENCE

| | |
|---|---|
| NORTHWEST LUMBER CO. 28720 NORTHWESTERN HWY. SOUTHFIELD, MICH. 48075 Hours: Mon-Thurs. 8 a.m.-6 p.m. Fri. 8 a.m.-5 p.m. Sat. 8 a.m.-4:30 p.m. Sun. 10 a.m.-2:30 p.m. Phone 356-2400 | TIMBERLANE LUMBER CO. 42780 W. 10 MILE RD. NOVI, MICH. 48050 Phone 349-2300 |
|---|---|



2 Locations to Serve You!

HAGGERTY LUMBER

AND SUPPLY COMPANY

HOWELL
227 N. BARNARD
546-9320

WALLED LAKE
2055 HAGGERTY RD.
624-4551

BASKETWEAVE REDWOOD PRIVACY

PRE-STAINED • ASSEMBLED

| | |
|-------|---------|
| 4'x8' | \$12.95 |
| 5'x8' | \$14.49 |
| 6'x8' | \$15.29 |

GROOVED 4"x4" POSTS ADDITIONAL — CASH AND CARRY —

REDWOOD FOR LANDSCAPING

LONG LASTING FULLY SAWN BOARDS

| | |
|---------------|---------------|
| 1"x6".....15¢ | 2"x4".....18¢ |
| 2"x6".....29¢ | 2"x8".....32¢ |
| 4"x4".....45¢ | |

DURABLE ROUGH SAWN TIMBERS

| | |
|---------------------|---------------|
| 4"x6".....49¢ | 4"x4".....35¢ |
| 1/2"x6".....13 1/2¢ | |

PER LINEAL FOOT — CASH AND CARRY —

PIER KIT

9 FT. LONG DOCK SECTION

WEATHER TREATED LUMBER
TOP DECK 1 1/2" x 4" x 3" WIDE
STRONG 2" x 6" x 8" STAINLESS
STEEL ADJUSTABLE SUPPORTS

\$29.50
BUILT-UP \$35.75
— CASH AND CARRY —

2"x4"x8' STUDS

59¢ EA.

BRIGHT NEW UTILITY GRADE — CASH AND CARRY —

EXTERIOR PLYWOOD
3/8" THICK

| | |
|-------------------|--------|
| 22 1/4" x 83 1/4" | \$1.59 |
| 22 1/4" x 94 1/4" | \$1.99 |

"MANY USES AROUND HOME INSIDE OR OUTSIDE"

HAGGERTY LUMBER & SUPPLY COMPANY

Open 8 to 6 Sat. 8 to 5

WALLED LAKE OPEN 'TIL 9 FRIDAY NITE • SUNDAY 10:00 to 3:00

Pickers Prune A Limb

FARMINGTON

Gary Lichtman can be replaced on the Farmington Board of Education but his successor will never be able to offer the same combination of abilities that Gary has given the community.

His real value is probably best understood by the six trustees who must choose a seventh member to fill the chair left empty by Lichtman's resignation.

FOR THE past couple years, the board has functioned led by the core of Richard Peters, Aldo Vagnozzi, Lichtman and John Washburn III, now retired from the board.

The recent departure leaves Peters and Vagnozzi as senior members to mesh with the underclassmen, Ken Perrin, Mrs. Kay Stirling, Ron Emmitt, Mrs. Betty Brennan and the seventh yet to be named.

Daniels Den

By EMORY DANIELS

The contributions Lichtman has made is best seen through the accomplishments in the area of curriculum during his chairmanship of the board's standing curriculum committee.

Major curriculum changes guided through his committee include the Family Life Education (FLE) programs of minority, understanding, substance abuse and human sexuality training. In addition, two entire series of texts were reviewed and

adopted to replace outmoded books.

Lichtman became a target of the radical right because he would speak out at public meetings to combat with logic and reason the emotional broadsides thrown at the board.

Lichtman couldn't remain silent and allow the district to take a step back wards or be manhandled by a politically-oriented group wanting to seize control of the school board.

The vocal opposition to this attempted seizure has come mainly from Lichtman and Vagnozzi who are concerned about the John Birch Society and the intruders it has made in Farmington.

LIChTMAN RESIGNED because the fearless five chose to fight against him instead of with him. Faced with the choice of uniting the board against the Birch onslaught, the fearless five elected themselves to offices on the board.

The fearless five not only grabbed all the plums but, in the process, pruned a very important limb from the tree. The plums pickers, responsible for the pruning, can now feed their barren tree and wait for the next harvest to see what falls into their baskets.

Election of this year's board officers was as cold and ruthless as last year's organization meeting. The caucus-power politics prevailed because the same kingmaker, Dick Peters, called the shots both times.

THE FEARLESS five who because majority rules but right makes might, not numbers.

Last year's facade could have been excused as a reaction to a backlash election but the repetition this year is indicative that the school board has become a political machine and will operate that way.

The board is a political machine because it is not fueled with the tolerance which allows for a compatibility with members of a more liberal persuasion. It has become a machine because board officers are now prizes to be given those the kingmaker deserves worthy of reward and withheld as punishment.

When secret caucuses are held to divide up offices, then patronage is used to lineup votes and trustees are given

Farmington Calendar

News items for the Farmington Community Calendar should be typewritten, double-spaced and contain the type of event, date time and place. Mail at least a week in advance of the event to the Farmington Community Calendar, 36251 Schoolcraft, Livonia 48150.

COUNTY LIBRARY HEARING

Thursday, July 8, at 7:30 p.m. there will be a public hearing in the Oakland County Board of Commissioners auditorium at 1200 N. Telegraph in Pontiac on the desirability of establishing an Oakland County Library Board, an action said necessary because of the adoption of House Bill 4920 dealing with regionalization of libraries.

WORLD WAR I VETERANS

Thursday, July 8, at 1 p.m. the Farmington Barracks of World War I Veterans will meet in the American Legion Hall at Grand River and Lakeway. Coffee will be served followed by a business meeting at 2 p.m. All WWI veterans are welcome to join the fellowship. Regular meetings are held the second Thursday of each month.

SENIOR CITIZENS SOCIAL CLUB

Friday, July 9, at noon the Senior Citizens Social Club of Farmington will meet in the First United Methodist Church of Farmington social room at Warner and Grand River. Bring a sandwich. A social afternoon with cards will follow.

JOB'S DAUGHTERS CAR WASH

Saturday, July 10, from 9 a.m. to 1 p.m. the Farmington Belnet No. 56 International Order of Job's Daughters will hold a car wash at the Farmington Masonic Temple, Grand River and Farmington Rds. Cost will be \$1.25 per car.

BLUE STAR MOTHERS

Thursday, July 15, at 1 p.m. Farmington Chapter 49 of the Blue Star Mothers of America, Inc. will hold its July business meeting in the home of Mrs. Margaret Weeks at 31675 Hull, Farmington.

OPTIMISTS ORGANIZE

Thursday, July 15, at 7:30 p.m. in the Botsford Inn the Farmington Optimists will hold an organizational meeting and invite all Farmington men interested in youth to attend. Breakfast is Dutch treat. The group plans on meeting each Thursday for a breakfast session.

Daniels Den

By EMORY DANIELS

LIChTMAN RESIGNED because the fearless five chose to fight against him instead of with him. Faced with the choice of uniting the board against the Birch onslaught, the fearless five elected themselves to offices on the board.

The fearless five not only grabbed all the plums but, in the process, pruned a very important limb from the tree. The plums pickers, responsible for the pruning, can now feed their barren tree and wait for the next harvest to see what falls into their baskets.

Election of this year's board officers was as cold and ruthless as last year's organization meeting. The caucus-power politics prevailed because the same kingmaker, Dick Peters, called the shots both times.

THE FEARLESS five who because majority rules but right makes might, not numbers.

Last year's facade could have been excused as a reaction to a backlash election but the repetition this year is indicative that the school board has become a political machine and will operate that way.

The board is a political machine because it is not fueled with the tolerance which allows for a compatibility with members of a more liberal persuasion. It has become a machine because board officers are now prizes to be given those the kingmaker deserves worthy of reward and withheld as punishment.

When secret caucuses are held to divide up offices, then patronage is used to lineup votes and trustees are given

adopted to replace outmoded books.

Lichtman became a target of the radical right because he would speak out at public meetings to combat with logic and reason the emotional broadsides thrown at the board.

Lichtman couldn't remain silent and allow the district to take a step back wards or be manhandled by a politically-oriented group wanting to seize control of the school board.

The vocal opposition to this attempted seizure has come mainly from Lichtman and Vagnozzi who are concerned about the John Birch Society and the intruders it has made in Farmington.

LIChTMAN RESIGNED because the fearless five chose to fight against him instead of with him. Faced with the choice of uniting the board against the Birch onslaught, the fearless five elected themselves to offices on the board.

The fearless five not only grabbed all the plums but, in the process, pruned a very important limb from the tree. The plums pickers, responsible for the pruning, can now feed their barren tree and wait for the next harvest to see what falls into their baskets.

Election of this year's board officers was as cold and ruthless as last year's organization meeting. The caucus-power politics prevailed because the same kingmaker, Dick Peters, called the shots both times.

THE FEARLESS five who because majority rules but right makes might, not numbers.

Last year's facade could have been excused as a reaction to a backlash election but the repetition this year is indicative that the school board has become a political machine and will operate that way.

The board is a political machine because it is not fueled with the tolerance which allows for a compatibility with members of a more liberal persuasion. It has become a machine because board officers are now prizes to be given those the kingmaker deserves worthy of reward and withheld as punishment.

When secret caucuses are held to divide up offices, then patronage is used to lineup votes and trustees are given

HAVE YOU HEARD?

There's a New
RECORD & TAPE SHOP
IN FARMINGTON
SIGHT AND SOUND MUSIC SHOP

LOCATED IN THE OLD
ELKS LODGE BLDG.
33312 GRAND RIVER
477-3610

SPECIAL 1 WEEK
EMERSON, LAKE
and PALMER

REG. \$4.99 SALE \$2.72

TARKUS
REG. \$5.99 SALE \$3.45

Loeffler
STONE CENTER

32720 NORTHWESTERN HWY.
E. of Orchard Lake Road
626-4048

CRUSHED STONE FOR DRIVEWAYS
SHRUBBERY BEDS

BUILDING & LANDSCAPE STONE
CALIFORNIA DRIFT STONE PATIO BUILDERS
NATURAL FIREPLACES

Heeney - Sundquist

A Funeral Home For Over 75 Years
23720 FARMINGTON ROAD
PLENTY OF PARKING IN OUR NEW LOT

echo park day camp

Swim Instruction • Sailing • Canoes • Archery
Fishing • Arts/Crafts • Games • Nature Trails

Boys-Girls Ages 3 1/2 - 14
2nd CAMP SESSION
BEGINS JULY 19
ENROLL NOW

NEAR LONG LAKE AND TELEGRAPH RDS. • BLOOMFIELD HILLS • 646-5590

FREE ELECTRIC EYE

SOLID BRASS ACCESSORY GROUP

NO DENTING NO BREAKAGE
NO MARRING
ALMOST INDESTRUCTIBLE
MADE WITH EVER-DURABLE
HIGH DENSITY POLYETHYLENE
THEY LOOK LIKE THE MOST
EXPENSIVE COPPER AND
PLATE GLASS LANTERNS
BUT COST FAR LESS!

COMPLETE INCLUDES: POST, LANTERN & ELECTRIC EYE

BETTER IN EVERY WAY
NEVER NEEDS PAINTING
SOLID COLOR, HIGH DENSITY,
RIGID, BUT FLEXIBLE POLYETHYLENE
NO SOLDERED JOINTS
TO OPEN AND BREAK
EASILY REMOVED HOOD,
WELL-VENTILATED.
NO RUST
NO CORROSION
NO FADING
WEATHER TESTED

SALE LANTERNS! YOUR CHOICE \$29.95

— 112 WHITE
— 114 BLACK
SIZE 18 x 12 x 12
UL APPROVED

— 112 BLACK
— 114 WHITE
SIZE 18 x 12 x 12
UL APPROVED

BUILT-IN ELECTRIC EYE INCLUDED, FREE (ON POST)

OVER 1,000 PATENTS ON DISPLAY

Progress Electric Co.
18255 SCHAFER
Cov. LODGE
DI 1-3880