

EXIDE BATTERIES

To Fit All Cars
Dunlop & Goodyear Tires
In All Grades

Burnett Bros.
SINCLAIR PRODUCTS

LOW ROUND TRIP FARES

ALL PAVED ROUTES

BUSES TO DETROIT
Daily
9:10, 11:10 a.m., 1:10, 3:10, 5:10, 7:10, 9:10, 11:10 p.m.
Connections for Bay City, Flint, Port Huron, Battle Creek

BUSES TO LANSING
Daily
9:05, 11:05 a.m., 1:05, 3:05, 5:05, 7:05, 9:05, 11:25 p.m.
Connections for Jackson

BUSES TO GRAND RAPIDS
Daily
9:05, 11:05 a.m., 1:05, 3:05, 5:05, 7:05 p.m.
Connections for Kalamazoo

Oak Pharmacy Phone 9384

THE FINEST TRANSPORTATION
BLUE GOOSE LINES
OVER MICHIGAN'S SCENIC HIGHWAYS

"The most CLOSELY read Advertising Medium in America"

The NON-METROPOLITAN NEWSPAPER

Says HENRY EWALD
Exec. Campbell Ewald Advertising Agency

Be sure that your advertising "GOES TO TOWN"

Thrifty Readers!

HERE'S REAL SAVINGS ON THIS NEWSPAPER & YOUR FAVORITE MAGAZINES

The thrifty way to subscribe for your ALL FOUR ONLY newspapers and America's *Grass* farm and fiction publications. New orders or renewals accepted.

THIS NEWSPAPER, 1 YEAR AND THREE BIG MAGAZINES \$2.20

GROUP A—SELECT 1 MAGAZINE

- American Boy 8 Mos.
- American Girl 8 Mos.
- McCall's Magazine 1 Yr.
- Christian Herald 6 Mos.
- Parents Magazine 6 Mos.
- Field & Stream (Weekly) 1 Yr.
- Pictorial Review 1 Yr.
- Romantic Story 1 Yr.
- Screen Book 1 Yr.
- True Confessions 1 Yr.
- Open Road (Nov.) 1 Yr.
- Woman's World 2 Yrs.
- Better Homes & Gardens 1 Yr.
- Home Arts Needlecraft 2 Yrs.
- Motion Picture 1 Yr.

GROUP B—SELECT 2 MAGAZINES

- American Fruit Grower 1 Yr.
- American Poultry Journal 1 Yr.
- American Gazette 1 Yr.
- Cleveland American Review 1 Yr.
- Country Home 1 Yr.
- Farm Journal 1 Yr.
- Home Arts Needlecraft 1 Yr.
- Home Friend 1 Yr.
- Leghorn World 1 Yr.
- Mother's Home Life 1 Yr.
- Pastime (Weekly) 26 Issues
- Plymouth Rock Monthly 1 Yr.
- Successful Farming 1 Yr.
- Poultry Tribune 1 Yr.
- Woman's World 1 Yr.
- National Live Stock Reporter 1 Yr.
- Household Magazine 1 Yr.

FILL OUT COUPON—MAIL TODAY
City list of magazines after checking out desired and enclose with coupon.

Check one: I enclose \$2.20 which includes a year's subscription to your paper and the magazine checked.
Name _____
Street _____
City, State, P. O. _____
Send Office _____

Employers Should Tell Employees of Benefits

Employers can help their workers and the Social Security Board by informing employees the latter may be entitled to money payments under the old-age insurance plan upon reaching age 65.

This statement was made today by Walter P. Redman, manager of the Social Security Board field office in Pontiac.

"We ask employers to notify their workers that the latter may receive money payments upon reaching age 65 if the work done has been in employment covered by the Social Security Act," Mr. Redman said.

"Such workers are entitled to a single cash payment, amounting to 30 percent of the covered wages they have earned between January 1, 1937, and the date upon which the necessary work is reached age 65. It is not necessary for a worker to retire from work to receive this money. Our office provides all necessary service in filing these claims.

"If employers will inform us that certain workers are eligible for these benefits we will mail all necessary slips to see that the claims are paid," Mr. Redman added.

Great Lakes College Offers Gardening

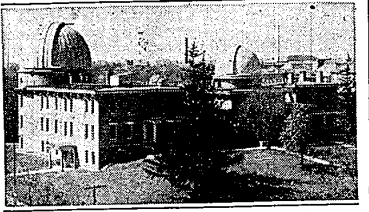
With the coming of Spring, residents of this vicinity and elsewhere are taking a renewed interest in their gardens. The garden-club individuals may be interested in a course offered in Department of Gardening at Great Lakes College.

This course covers the general principles of soil fertility, plant feeding, and the new field, tank or chemical plant culture.

Persons who are interested in advancement in their profession are offered a course in Survey of Principles and Practices in American Secondary Education. Other courses given in the evening division are Social Psychology, Eugenics and Genetics, Argumentation and Debate, Vocational Education and Guidance, American History, Biology, Shortland, Accounting, Economics, and English. The college gives special consideration to the varied preparation of interests of individual students.

Evening classes are scheduled to begin in March. All requests for information concerning the courses mentioned, or others not here included, should be addressed to the Registrar, Great Lakes College, Ferndale, Michigan.

Your University
PERSONS, PLACES AND ACTIVITIES YOU HAVE HEARD OF
READY ABOUT AT THE UNIVERSITY OF MICHIGAN



OBSERVATORIES

Michigan has been among the leading institutions in America in the field of astronomy since the middle of the last century. The above picture shows the original University of Michigan Observatory, constructed in 1855.

It is expected that this building will be replaced at some future date by a more modern observatory which will house the University's new 66-inch reflecting telescope, which will be one of the three largest in the world. In addition to its Ann Arbor Observatory, the United States has one near Pontiac and one in South Africa. The Pontiac institution, which was the gift of Messrs. Robert R. McMath, Henry S. Hulbert and Francis C. McMath, is pioneering in the study of prominences of the sun by means of motion pictures.

In the above picture, the smaller dome to the right houses the University's first telescope, a 12-inch refractor, the first telescope to be built entirely in the United States. It was put in operation in 1852. The larger dome to the left contains a 37 1/2-inch reflecting telescope, which at the time it was built in 1911 was one of the largest telescopes of the country.

NOBLE RED MAN MUST OBEY HUNTING LAWS

States and against all other white persons who intrude upon the same.

That protection, the court ruled, ended with the termination of occupancy.

M.S.C. "INVENTS" SQUAB CHICKEN FOR EATING

Inventors of members of the poultry and experiment station staff of Michigan State College is credited with the "invention" of a new Michigan food product—squab chickens.

Prime purpose in developing such an edible is to aid the poultry industry in the State.

The youngster bird, poultrymen have known for years, the more efficient is its food utilization. So the college staff reasoned that if these birds could be sold early in life, food cost would be low. The ones they have in mind are those desirous sooner or later to be sold for eating rather than for use in flocks for egg production or breeding purposes.

After the first squab-sized birds were dressed, two women in home economics service of the experiment station conducted cooking tests. Proof of the eating is to be expanded. Diners attending the World's Poultry Congress in Cleveland, July 28 to August 7, are to have a chance to consume some of these small chickens.

Squab chickens are sold in a prepared simply. First the one prepared dressed bird goes into a pressure steamer for a half hour. Then it is stuffed and crumbed. If skinned it is given a coating of flour, egg and crumbs. Oven baking for 15 minutes at 450 degrees Fahrenheit completes the preparation.

Hatcherymen are said to welcome the new idea. If the popularity of the idea grows their business should increase, for it would take two to three times as many baby chicks to produce the market weight now supplied by birds in the heavier market classes.

Yes, music is the Prophet's art. Among the gifts that God hath sent, none is so magnificent! —Longfellow.

Sap of Sapodilla Tree

Chewing Gum Ingredient

If a blight should destroy the sapodilla tree millions of Americans would mourn—for it is the sap of the sapodilla tree that supplies chicle. And chicle is the basic ingredient of chewing gum, relates a writer in the Philadelphia Record.

The chicle is drained from the trees in Central America jungles in the rainy season by machete-bearing natives, called chicleeros. They climb the trees, cover them with cross-hatchings of cuts, connect these with central canals that drain the sap into canvas bags.

The liquid is then boiled, poured into molds, hardened into bricks, and thus shipped. On arrival in factories in the United States, the bricks are dried out for 30 hours, then melted, filtered, poured into mixers, stirred with pulverized sugar, corn syrup and flavoring, then cooled and rolled.

The rolled gum is fed into "breaking" machines which cut 22 sticks of gum with one click of the punch press, turning out 3,300 sticks a minute. The larger dome to the left contains 120 finished packs of five sticks each, per minute.

Belize, in British Honduras, is the headquarters of the chicle contractors, who hire native crews to extract the sap.

Campfire Tree an Evergreen

The campfire tree, an evergreen, like the birch has a smooth, greenish bark, with white flowers and red berries. The chief obstacle to its cultivation is its slow growth, a still. The campfire comes off as a vapor, and is condensed. As campfire fumes oversaturate the leaf glands, the workers in the refineries weep, and weep, and weep. The Venetians were the first people in Europe to refine campfire. They probably learned the trick from the Chinese. Then the Dutch got a monopoly on refining, and it is only in recent times that the process has become generally known.

EVERYDAY LOW PRICES

Our Own TEA lb pkg 37c
ASK ABOUT THE CONTEST

8 o'clock COFFEE lb 15c
Bokar, lb 21c

Iona BEETS No. 2 CAN 4 cans 27c
No. 2 1/2 CAN 8 for 25c

- A & P BEETS, whole No. 2 can, 2 for 23c
- Butterfield POTATOES, 2 1/4 oz can, 3 for 25c
- IONA SPINACH, No. 2 can 8c
- MIXED VEGETABLES, Larsons No. 2 can 10c
- Heinz TOMATO SAUCE BEANS, 18 oz, 2 for 23c
- GRAPEFRUIT, No. 2 can 10c
- BRILLO, Regular or Soap Pads, 3 for 25c
- A & P PRUNES, lb 8c, 2 lbs 14c

- Palmolive SOAP** 3 bars 17c
CRYSTAL WHITE SOAP 6 for 23c
- Wisconsin DAISY CHEESE** lb 17c
- SALMON Medium Red** 1-lb can 2 for 37c
- Colman's Mustard, First Aid for Colds**, 4 oz can 27c
- CLAPP'S BABY FOOD**, 3 cans 25c
- JELLY EGGS**, 1 lb bag 10c
- SUPER SUDS**, red, lg, 17c, concept, lg, 2 for 37c
- WHITEHOUSE MILK**, tall can 6c
- PEANUT BUTTER**, Sultana, 2 lb jar 23c
- SCOT TISSUE**, 4 rolls 29c
- SNOWDRIFT**, lb can 19c, 3 lb can 49c

- Laying Mash** 100 lb bag \$1.80
- Dairy Feed** 16%, 100lbs \$1.20
- Wheaties** 2 pkgs 21c
- Korn Kix** 2 pkgs 23c
- Ann Page SALAD DRESSING** Qt jar 31c

WE REDEM WELFARE ORDERS

A&P FOOD STORES

Grow

Advertising is usually a sign of a growing business. And people, as a rule, like to shop at a growing store.....

CHURCHES

All notices for this column must be in the Enterprise office not later than Tuesday at noon.

Salem Evangelical Church
Rev. Carl H. Schultz, Pastor
Worship Service—10:00 A. M.
Sunday School—11:00 A. M.
Morning Worship at 9:30
Methodist Episcopal Church
Rev. Delmore Stubbs, Pastor
Morning Worship at 9:30
Church School at 11:45
Men's Forum at 12 noon
Wednesday, 7:30 p. m. Teacher Training Class
Thursday, 7:30 p. m. Adult Choir rehearsal.

CLARENCEVILLE M. E. CHURCH
Rev. W. J. Prisk, Pastor
Church Service, 10 a. m.
Sunday School, 11 a. m.
Epworth League, 6:30 p. m.
Evening Service, 7:30 p. m.
Thursday Evening, 7:30 p. m.

Our Lady of Sorrows Church
Rev. John J. Larkin, Pastor
Sunday masses at 7:30 a. m., 9:00 a. m., 10:30 a. m., and 12:00 p. m.
Benediction after 10:30 mass.
Daily masses at 7:30 a. m., and 8:00 a. m.

First Baptist Church
Gilbert A. Miles, Pastor
Morning prayer meeting 10:15.
Morning worship 10:30.
Bible school 11:45.
B. Y. P. U. 6:30 p. m., for Juniors and Seniors.
Evening Evangelistic Service at 7:30.
The mid-week Fellowship meetings are held Wednesday evenings at 7:30.

Reformed Gospel Tabernacle
1800 Lasher Road
Sunday School, 10:00 a. m.
Pentecostal prayer and praise service, 11:00 a. m.
Evangelistic service, 7:45 p. m.
All are welcome regardless of circumstances.
100% Pentecost.

Community Church
West Point, Pa.
Rev. O. J. Lyon, Pastor
10:00 Sunday School.
11:00 Preaching Service.

Eighth Church of Christ, Scientist
Grand River Ave. at Evergreen Rd
Detroit, Michigan

"Substance" will be the subject of the Lesson-Sermon in all Christian Science Churches throughout the world on Sunday, March 12. The Golden Text (Proverbs 3: 9) is: "Honour the Lord with thy substance, and with the first fruits of all thine increase." The Bible citations in this passage (Deuteronomy 23: 27): "The eternal God is thy refuge, and underneath are the everlasting arms." Correlative passages to be read from the Christian Science textbook, "Science and Health," with Key to the Scriptures, by Mary Baker Eddy, include the following (p. 275): "All substance, intelligence, and order belong to God. These are His attributes, the eternal manifestations of the infinite divine Principle, Love."

There is nothing so bitter, that a patient mind can not find some solace for it.

After Dark! ... by Rice

DID YOU KNOW THAT THE LIGHT YOU SEE BY IS REDUCED FROM 10,000 FOOT-CANDLES OF LIGHT WHEN THE SUN IS SHINING TO A FRACTION OF FOOT-CANDLE AFTER THE SUN HAS SET?

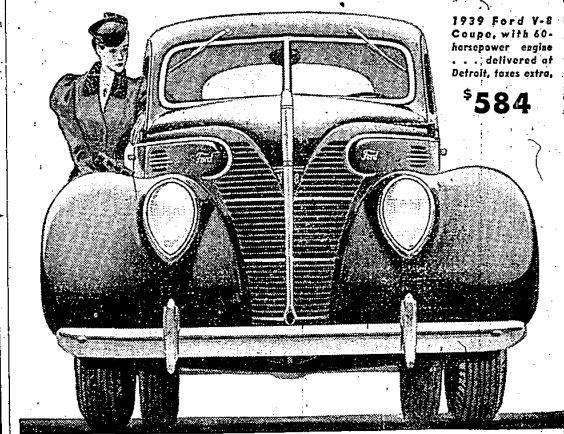
WHEN YOU DRIVE A CAR AT NIGHT RE MEMBER!

THAT MANY HEADLIGHTS PROVIDE LIGHT FOR BARELY 200 FT. — OR EVEN LESS IN BAD WEATHER.

THAT AT 50 MILES PER HOUR 200 FEET IS COVERED IN ABOUT 2 1/2 SECONDS.

THAT AFTER DARK...

A BIG CAR AT A SMALL PRICE



1939 Ford V-8 Coupe, with 60-horsepower engine... delivered at Detroit, taxes extra, \$584

There are good reasons why so many folks are talking about the 1939 Ford V-8!

One obvious reason is the fact that it provides so much car for so little money. Actually, it costs less than a Ford car of the same size and power sold for last year! And its low price includes many items of desirable equipment.

The Ford V-8 has all the room and all the basic features of the De Luxe Ford. Some of them are listed at the left!

But riding is better than reading. Out on the road, you'll soon understand America's enthusiasm for the car that is big in everything but price!

- V-8 ENGINE**—Year choice, 60 hp. for extra charge, 66 hp. for extra economy.
- HYDRAULIC BRAKES**—Special feature—built to strict Ford standards of safety.
- TRIPLE-CUSHIONED COMFORT**—Softer seats, flexible springs, four big hydraulic shock absorbers.
- SCIENTIFIC SOUNDPROOFING**—Insulated, vibration reduced by careful research.

FORD V-8 FOR 1939