

## LAKE CADILLAC SKIDDING TESTS COMPLETED

Skidding tests on the frozen surface of Lake Cadillac, launched February 12 by the National Safety Council, were concluded this week.

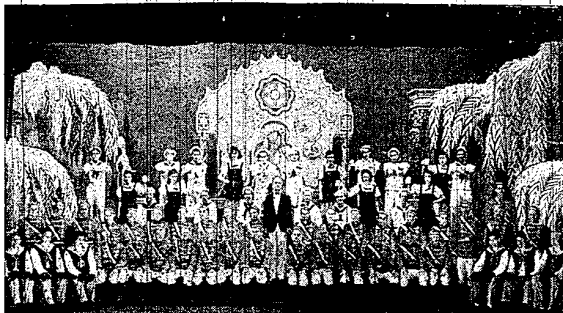
For three weeks, test drivers and engineers put a fleet of cars through a series of maneuvers to scientifically determine the hazards of winter driving on ice and ways in which the hazards could be combated. Nearly 1,000 tests were run. Data was taken under a variety of ice conditions. Cars were driven with and without chains, with tires partly in-

lated and with tires fully inflated, with new tires and with old tires. Comparative tests were also made with cars fully loaded and with only the driver.

The tests were conducted in cooperation with the state highway department. Officials of the National Safety Conference said that final results and conclusions would not be available until the data had been thoroughly analyzed. The information will be published in connection with fall meetings of the Winter Driving Hazards Committee of the National Safety Council.

For thou art my hope, O Lord God: thou art my trust from my youth.—Psalm 71:5.

## Scene in "Anchors Aweigh"



A scene similar to the one pictured above will greet the audience when the Farmington Kiwanis club presents its minstrel show "Anchors Aweigh." Rehearsals for the show are now in progress and the cast, which will include many prominent Farmington men, will do their stuff Tuesday evening, March 26, at the new high school auditorium.

### STAMP EXHIBIT TO BE HELD IN BIRMINGHAM

The third annual exhibition and bourse of the Oakland County Philatelic Association will be held at the Birmingham Community House in Birmingham on Sunday, April 7. This event is sponsored by the four stamp clubs in the county, namely, The Birmingham, Ferndale, Pontiac and Royal Oak stamp clubs. This organization was formed in 1938 and is directed by Dr. J. H. Howell of Birmingham, president.

There will be a fine exhibit of approximately one hundred forms of postage stamps from many countries. Members will be competing for the Cole Trophy, donated by Maurice P. Cole of the Ferndale Stamp Club, and The Howell Plaque, donated by Dr. J. H. Howell.

A banquet will be held in the Birmingham Community house dining room at six o'clock. Tickets may be secured from any member of the four stamp clubs. Anyone interested in postage stamps as a hobby is cordially invited to attend. Anyone who wishes to exhibit stamps may secure further details from Mr. Walter Culbourn, 2500 Boks Bldg., Detroit. There will be no charge for admission.

Send in your news items

### EARLY SEEDING NEEDED FOR SWEET PEAS

Homemakers in Michigan as in any other state smile when they are successful in getting a colorful crop of sweet peas to flower somewhere around the home.

Difficulties usually all involve the nature of the plant. Sweet peas, says C. E. Wildon, horticulturist at Michigan State College, need to be seeded early with special planting care.

First step is to spade up a deep trench seven to ten feet in depth if drainage is good. Into the bottom goes some well rotted manure and ground bone. When planting time comes the trench is nearly

filled with soil and seed placed three to four inches deep, half an inch apart.

Cover at first with about two inches of soil, advises Wildon, and when the peas are up, more soil can level up the trench. The plants will need support, such as brush or netted chicken wire.

As the season advances, the sweet peas can be made to grow longer and more luxuriantly if the plants are mulched with two to four inches of strawy manure.

Even more modern to lengthen out the sweet pea season is to give partial shade during hot summer days. A strip of aster cloth supported over the tops of the plants will help produce a longer and more colorful bloom. Still another pointer is to keep the crop picked off to prevent the plants from going to seed.

Send in news items EARLY

Patronize Our Advertisers!

### B. E. Tedds

PAINTER and DECORATOR

Painting, Paperhanging, Glazing  
2022 Austin Drive  
Walled Lake  
ESTIMATES FREE

### SOLVE YOUR GIFT PROBLEMS with

## Samsonite Luggage

Famous Samson Luggage of Samsonite, the uncanny covering that's practically scuffproof. Sturdy enough to stand abuse of auto travel.

Men's Overnight Case . . . . . \$ 6.00

Women's Hanger Case . . . . . \$10.00

Men's 2-suit Overnight Case . . . . . \$10.00

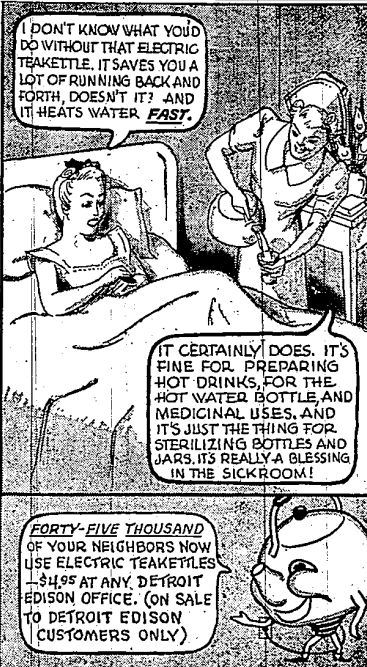
Women's Overnight Case . . . . . \$ 6.00

All Purpose Family Wardrobe, \$15.00

## Dickerson Hardware

Phone 4

33405 Grand River



## SPECIAL!

Rugs — 9x12  
Cleaned Only

\$339

Sizing . . . . . \$1.00

## Grimes Cleaners

Redford Six Six Six Six

### DON'T MISS THESE

## Easter Shoe Values

Shoes in all styles and sizes for the entire family

Black — Dark Brown — Tan and White

For Men . . . . . from \$2.25 to \$6.50

For Women . . . . . from \$2.00 to \$4.50

For Children . . . . . from \$1.75 to \$3.00

We also have overshoes, galoshes, boots, slippers and rubbers

Fred L.

**Cook & Co.**

Phone 10  
Farmington

Fred L. Cook

Adolph Nacker

### FOR SALE!

Four tires and tubes,

5.25x18. Practically

new. Call Enterprise

office.

### AUCTION!

Having leased my farm, I will sell at public auction on the farm known as the Godlip Schmidt farm located 1/2 mile east of Catholic church, U. S. 23, 5 miles north of Ann Arbor on Church Road, the following described property, on

Tuesday, March 19

at 12 noon sharp

32 HEAD OF CATTLE  
13 milk cows, 1 bull, 7 heifers, 1 and 2 year old, 18 now milking, balance to freshen in 60 days.

### HOGS

15 shoats, wgt. 175 lbs, 1 stock hog, 2 shoats, 60 lbs. each, 1 brood sow, 7 pigs.

### POULTRY

150 laying Plymouth Rocks, 3 large geese, 2 ganders, white leghorns, 3 chicken crates.

### SIX HORSES

— team matched chestnuts, 6 and 8 yrs. old, wt. 3000, mare colt, 4 yrs. old, gelding, 3 yrs. old, 2 mare colts, 1 yr. old.

### GRAIN

Quantity of sweet corn seed, 8 bu. June clover, 100 bu. oats, barley, 200 bu. oats, 200 bu. ear corn.

### TOOLS

Side rake, Keystone; 2 rubber tire wagons and hay rack; land roller; 1 section spring-tooth; drag; set of bob sleighs; 1 log stone boat; 1 set tackle block; milk cooler; 1 DeLaval milkster; 2 units; 2 manure spreaders; McCormick Deering; 2 sets double harness; 1 hammer mill, complete; 2 laundry stoves; 1 silage truck; Other items too numerous to mention.

Terms of sale CASH

GROVER PLACE

Proprietor

O. A. Steffe, Auctioneer

Ed. Welch, Clerk

## LET IT RAIN!



Bad weather imposes no hardship on the housewife who has a telephone. She can order her supplies without leaving the house, can accomplish things in a few minutes by telephone that otherwise would keep her out in drenching rain or on icy pavements half the day. Useful always, priceless in emergencies, the telephone serves you promptly and dependably at reasonable cost.

MICHIGAN BELL TELEPHONE COMPANY