

Civil Air Patrol Organizes Here

FARMINGTON The Farmington Squadron of the Civil Air Patrol (CAP) held an open house in Farmington High School Sept. 29. Feature event of the evening was presentation of the Squadron charter by Col. Charles W. Klann, commander of the Michigan Wing Civil Air Patrol.

Other highlights included appointment of Stephen Combe as cadet commander and Mark Bradley and John Truitt as flight leaders.

Wilbur Brotherton, mayor of the City of Farmington, and Earl Teeples, supervisor of Farmington Township, proclaimed this week as Civil Air Patrol Week.

Captain William Mendoza, Farmington Squadron commander, presented them with honorary memberships in the Civil Air Patrol.

Other honored guests were: Lt. Col. Eugene Kempf, Wing executive officer and Maj. Walt Issitt, commander of the Royal Oak group. Also enjoying the evening were parents of the Farmington Squadron cadets.

The Farmington Squadron is the newest member of the Royal Oak group which includes Accretion Senior Squadron, Birmingham Squadron, Royal Oak Squadron and Southfield Squadron.

The Farmington Squadron was formed in June and has five senior members: Capt. Mendoza, and Sharon Mendoza of Farmington; and Paul

Lockey, Ken Tranchida and Sue Hills of Southfield.

Twenty-one cadets have joined since June: Craig Bevan, Duane Cowger, Douglas Holbrook, John Kish, Michael Meyer, Ford Price, Crystal Brackens, Stephen Combs, Francis Grainer, Eric Johnston, Michael Patton, William Rogers, John Truitt, Laura and Richard Van Dresser, William Toth, Richard Twigg, and Fred Van Wicklin of Farmington.

Also: Mark Bradley of Birmingham; Douglas MacDonald and Brian Stratton of Northville. Chaplain for the squadron is Father Rokusek of Our Lady of Sorrows Catholic Church at Farmington.

Farmington Squadron meets each Wednesday at 7 p.m. in the Farmington High School, 22000 Shawassee. The cadet program is open to boys and girls between 13-17 years of age and the senior program is open to all interested adults.

2 Teaching At Oakland

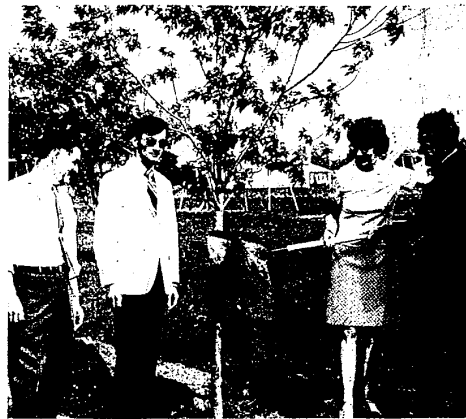
FARMINGTON Two Farmington residents are members of Oakland University's continuing education faculty, instructing evening non-credit courses during the fall term which began this week.

William O. Bliss, 22725 Orchard Lake, and owner of an appraisal company, instructs Real Estate Appraisal I on Mondays. The course

deals with the fundamentals of appraisal of land and improved properties and various techniques used in appraisal. Fausto Ricci, 32396 W. 12 Mile, conducts "Art-A-Pleasure and an Investment." Thursdays, for those who desire to combine the pleasure of ownership with reasonably sound investment. Ricci is director of C. B. Charles Galleries.



CHAPTER FORMS — A chapter of the Civil Air Patrol (CAP) has been formed in Farmington. Participating in the presentation of the charter during ceremonies on Sept. 29 were (from left) Capt. William Mendoza of the CAP, Farmington Township Supervisor Earl Teeples and Farmington City Mayor Wilbur Brotherton. (Evert photo)



TREE PLANTING — The Soroptimist Club of Farmington, in celebration of the 50th anniversary of the Soroptimist Federation, has donated a silver maple tree for the Drake Road Park in the City of Farmington. At the Oct. 3 planting are (from left) David L. Jones, city department of public services director; Walter Jablonski, principal of Longacre School which borders Drake Park; Shirley Hatfield, Soroptimist president; and Wilbur Brotherton, City of Farmington mayor. (Evert photo)



EXCHANGE LEADERS — The Exchange Club of Farmington has installed officers for the 1971-72 club year. From left: Ed Baldwin, first vice-president; Jim Kusza, second vice-presi-

dent; Richard Tupper, president; and Art Lamb, treasurer. Officers not shown are John Courville, third vice-president, and Fred Menke, secretary. (Evert photo)

WELCOME WAGON

THE WORLD IS AT YOUR FINGERTIPS WHEN YOU'RE IN LOVE...

When that special time comes and he finally pops the question... be sure to call:

Welcome Wagon

LIVONIA 425-8244
FARMINGTON 425-4528
PLYMOUTH and 265-5241
NORTHVILLE 425-5399
SOUTHFIELD 425-4559
FARMINGTON 821-8761

FIREPLACE RECESSED SCREENS

Up to 50" for Colors

21⁹⁵ \$3.00 Extra

• SATIN BLACK with Draw Pull
• Bring in your measurements

SAVE 1/2!

DO IT YOURSELF!

YEAR END SALE

SALE STARTS OCT. 7th

25% Off

Scotts lawn products

Use now — or next spring. Scotts money back satisfaction guarantee applicable either time

	WAS	NOW	SAVE
Turf Builder			
5,000 sq ft bag (20 lbs)	5.45	4.09	1.36
10,000 sq ft bag (40 lbs)	9.95	7.46	2.49
15,000 sq ft bag (60 lbs)	13.95	10.46	3.49
Super Turf Builder			
5,000 sq ft bag (20 lbs)	7.95	5.96	1.99
10,000 sq ft bag (40 lbs)	14.95	11.21	3.74
15,000 sq ft bag (60 lbs)	19.95	14.96	4.99

25 FT. TROUBLE LIGHT

only **\$1.99**

3 for 77c

GUTTER SCREEN 25 FT. **2 FOR \$4.99**

White Caulking Compound

GARDEN MASTER Spring Braced LAWN RAKE

flex action combs heavy litter, won't damage grass roots

tempered heavy-duty steel teeth

\$2.88

LUCITE Wall Paint

Water Clean-Up
Dries in 1/2 hour

\$5.39 GAL.

White or Ceiling White

ICE SKATES Professionally Hollow Ground

75c

ODDS & ENDS PAINT

\$1.00 Gallon

Heavy Duty TRASH CAN LINERS 30x37

\$4.99 100 ct.

COUPON WINDOW SHADES Cut to Order

10% OFF With Coupon Only

COUPON GLASSFIRE & Custom Recessed FIREPLACE SCREENS

10% OFF With Coupon (Doesn't apply to spec. screens above)

COUPON ALUMINUM SCREEN & STORM WINDOW REPAIR SERVICE

10% OFF With Coupon (Storm & Screen All Made to Order Door Wide • Insurance Work)

LAWN MOWER SERVICE AUTHORIZED Factory Toro Service

NOW! IS THE TIME TO TUNE-UP YOUR SNO THROWER

• TUNE-UPS • SHARPENING • All Makes and Models

Free Pick-up and Delivery

STAR HARDWARE, INC.

17162 FARMINGTON ROAD • BURTON HOLLOW CENTER AT 1 MILE ROAD

PHONE **261-9920**

• BANKAMERICARD • MASTER CHARGE • AMERICAN EXPRESS • DINERS CLUB

OPEN SUNDAY 10 A.M. - 5 P.M.
Daily Hours 9:30 a.m. - 7 p.m.
Saturday 9:30 a.m. - 9 p.m.

Warning Given On Rubbish

The City of Farmington cautions residents to be more careful about when they place and receive trash cans for pickup.

Rubbish is not to be placed out on the curbs prior to noon on the day preceding scheduled pickups.

Residents whose rubbish is picked up on Mondays must not place trash cans on the curb before noon Sunday.

Trash cans are to be removed by noon the day following pickup.

ROOF LEAK?

WE CARRY A COMPLETE LINE OF ROOFING NEEDS

• SHINGLES • ROLLS • MASTICS

CLEARANCE PREFINISHED PANELING OVER 1000 PCS. AT REDUCED PRICES! ALL PANELS BY WELWOOD

STOP — SHOP — SAVE

CLOSE OUT ASBESTOS SIDING SHINGLES (Discontinued Colors - No White)

\$5.00 c.s.c. Bds.

WHITE CROSS-BUCK COMBINATION DOORS 32" & 36" WIDTHS

39⁹⁵

CASH & CARRY *INCLUDES ALL HARDWARE

OUR 25th YEAR

H.A. SMITH Lumber

28575 GRAND RIVER near Middlebelt

GR 4-8610 • KE 5-8440

Making Life Better

"Service" is part of my name



Ronald E. Sehee
Westland

... my job is to keep customers happy. I'm the Serviceman who answers your call when you have an appliance problem. If any appliance you purchase from us ever gives you trouble, I'm trained to fix it. Because Consumers Power values its customers, my crew is always on call. We know you expect top efficiency from our appliances, and we try to keep things that way. Service is why we're here.

When you need service, call us:



Consumers Power

11801 Farmington Rd.
Livonia, Michigan
427-5100

Consumers Power Company
Division: Residential Service
At 208-75-42