

## CRANBERRIES AND PORK CHOPS MAKE IDEAL MEAL

November is the month of cranberries, and they can be used in many different ways, not just as an accompaniment to roast turkey. These cranberry pork chops are an ideal dinner dish.

### Cranberry Pork Chops.

(serves four)

Trim a little of the fat off four pork chops. Season both sides with salt and pepper, dredge lightly in flour. Melt pork fat in frying pan, and brown chops in it. Arrange chops in casserole. Mix 2 cups washed raw cranberries with 1 cup sugar and 1/4 cup water. Cover chops with cranberry mixture. Cover casserole, bake in moderate oven (350 degrees) forty five minutes to one hour, or until tender.

## We Make it a Point

To serve the finest in dinners at the lowest possible cost.

Come in Today

Farmington's Newest Business Establishment

## Cata's Buffet

## Hunter's Specials!

Soo Line of  
HUNTING COATS  
WOOL SHIRTS  
WARM WOOL SOCKS  
BREECHES  
HUNTING CAPS

## From Cook's



Food J. Cook & Co. Fred L. Cook  
P. O. 19 Adolph Nacker  
Farmington

## Items of Interest to WOMEN

### BAPTIST CHURCH PROGRAM DEPICTS SOCIETY'S WORK

On Sunday night, November the ninth, a program describing the work of the American Bible Society will be presented at the Baptist Church, starting at 7:30. Colored slides will be shown, and explained by the recorded voice of Dr. Francis Stiffler, well-known secretary of the society.

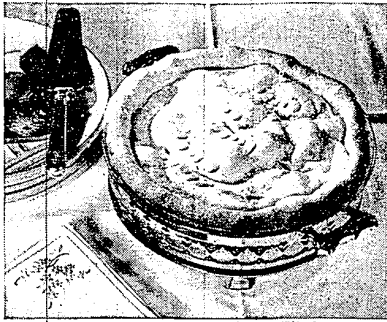
The responsibility of the American Bible Society has increased greatly during the war, since Nazi occupation of Holland has halted the work of the Netherlands Bible Society. As Sunday evening's program will illustrate, the society sends Bibles in a thousand languages all over the world.

The entertainment will also include special music by the Baptist junior choir. Everyone is welcome.

### Minnie Wilbur Guild Met Monday Evening

Members of the Minnie Wilbur Worldwide Guild of the Baptist Church met on Monday evening at the home of Joyce and June Haber-mehl.

### AS AMERICAN AS APPLE PIE



Willard Davis Apple Commission

### Calendar of Events

**FRIDAY, NOVEMBER 7**  
Red Cross Sewing Unit opens at 1:30 p. m. in High School cafeteria.  
**MONDAY, NOVEMBER 10**  
Legion Auxiliary, at 8:00 p. m. in Legion home.  
Daughters of Isabella Circle No. 617, at Pierson P.T.A. Hall (Seven Mile Road and Grand River).

**TUESDAY, NOVEMBER 11**  
Order of Eastern Star, at 8:00 p. m. in Masonic hall. Annual meeting and election of officers.

**WEDNESDAY, NOVEMBER 12**  
Women's Club, at 2:00 p. m. in Baptist Church Hall. Guest Day. Guest speaker, Dr. Marie Rasey.  
**THURSDAY, NOVEMBER 13**  
Red Cross Sewing Unit opens at 1:30 p. m. in High School cafeteria. Golden Rule Circle of Methodist Church, at home of Mrs. Manley Newman. Luncheon at 1:00 p. m.

**FRIDAY, NOVEMBER 14**  
Red Cross Sewing Unit opens at 1:30 p. m. in High School cafeteria.

### Potato Plays Great Role And Is Not All Starch

Potatoes have long been an American institution. They may be served in such a variety of ways that we include them in our menus more often than any other vegetable. Contrary to popular belief, potatoes are not all starch. They are a well-rounded food containing highly available iron, phosphorus, magnesium, copper and protein. As to vitamins, by eating two average servings a day (about three-quarters of a cup equals an average serving) you are getting a fifth your daily requirement of Vitamin B-1, a third the requirement of Vitamin B-2, and two-thirds the requirement of Vitamin C.

You've undoubtedly heard that french fried foods are indigestible and are to be avoided. That rumor was started in "the good old days" when french frying meant heating the fat until it smoked then dumping in the food and frying to the proper degree of doneness. It's no wonder that stomach-aches resulted, because when fat is heated to the smoking point it begins to deteriorate and becomes extremely indigestible. It also becomes rancid very quickly after it has been heated to that temperature.

If you follow this rule you'll be safer. Never let the fat smoke; never let the fat temperature exceed 400 degrees.

### SPECIAL

**Cotton Frocks \$1.09**

Skirts \$2.00 and up  
Hats \$1.25 and up

**IRENE'S Apparel Shoppe**

(NEXT TO POST OFFICE)

### RED CROSS DRIVE IS MEETING WITH GOOD RESPONSE

The response to the Red Cross drive for membership in Farmington has so far been excellent. The drive will continue by house to house canvass until November the twelfth.

With the money raised in this way, from all over the United States, the American Red Cross is able to carry on its work of helping the unfortunate, and assisting at times of national disaster, such as flood and fire, with food, medical supplies, and hospital care.

To mention only one of the society's many projects paid for by the annual Roll Call, all materials used at the Farmington sewing unit are provided by the Red Cross, as they are in thousands of communities throughout the country. Farmington should not fail to give generously to such a cause.

remarkable book, "Now It Can Be Told," he graphically described his experiences at the Front.

He visited the United States on two lecture tours after the war, packing balls in the major cities. After this he went to Russia, Germany and Austria where he saw the horrors caused by the collapse of credit. He wrote the best-seller, "The Middle of the Road." In his writings, as early as 1919, and again in 1933 he prophesied the second World War.

Sir Philip has published two books recently; last Spring, "Sons of the Other," a story about the Dunkirk evacuation, and in September, "The Amazing Summer," an account of the months during which the R.A.F. repulsed wave after wave of Goering's bombers. Tickets at \$1.65 and \$1.10 are available at Grinnell's Box Office, R.A. 1124.

## Cookery QUERY CORNER

### HOW IS A LEG OF LAMB PLACED IN THE PAN FOR ROASTING?

A leg of lamb is placed on a rack for roasting with the skin side down because the fat deposit is on the inside surface of a leg of lamb.

### SHOULD LINK SAUSAGE BE PRICKED WHILE COOKING?

No. Link sausage which is properly cooked does not need to be pricked to prevent splitting. Add a couple of tablespoons of water to the sausage in the frying-pan, cover, and cook slowly until the water evaporates. Brown and the sausage will hold its shape.

### • DECORATE WITH Light



### GOOD LIGHTING

Lighting is one of the most important elements in decorating a home. It enhances the beauty of draperies, rugs, pictures and furniture. It makes every room more cheerful. Two rules for good lighting—(1) Use the right size bulbs in your lamps and fixtures (2) Shade all bare lamp bulbs. The Detroit Edison Company.

## PUT THE GARDEN TO BED FOR COLD WINTER MONTHS

In November the garden should be put to bed for the winter. Pull up all annuals, and cut tops off perennials. Where annuals have been, spade the soil, turning the topsoil under, in preparation for next year's planting.

If you are planning to put in rose or lilac bushes next spring, the ground should be prepared now. (The best soil for roses is a deep and rich clay loam.) Dig the soil about two spades deep, and mix well with manure. For roses especially the fertilizer and soil should be well blended.

It is also a good plan to fertilize the lawn now, and thus assure thick grass for next year.

## Quilt Tops Donated For Evangelical Bazaar

Two quilt tops were donated for the Evangelical Church bazaar, one by Mrs. Phoebe Ross, the other by Mrs. John Dowell.

John Clark of Detroit, a former Farmington resident, entertained a party of twenty-seven at the Evangelical bazaar.

### LOCALS

Mrs. Jennie Murphy of Bad Axe is spending this week with her daughter, Mrs. Edward Alexander and family.

Mr. and Mrs. Homer Eisenlord and Mr. and Mrs. Irwin Pietenberg spent Tuesday in Battle Creek.

## How Low is a Low Price for GLASSES?

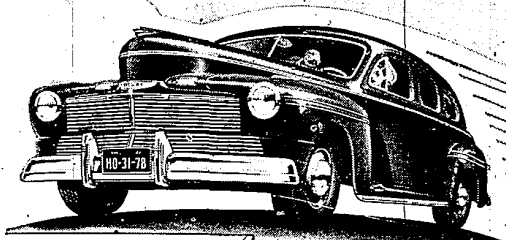


*Fashion Styled*  
**Quality GLASSES**  
ARE PRICED WITH THE LOWEST

America's Smart glasses can be yours at America's lowest possible prices. If you need glasses, get them at once. Our quality styled glasses are fitted to your features... no more ugly glasses... See us today.

Never an Interest or Carrying Charge  
DR. HENRY H. DE ROY, D. O.  
OPTOMETRIST IN CHARGE  
**DE ROY**  
JEWELERS - OPTICIANS  
2144 GRAND AVENUE, FARMINGTON, MICH.

## It doesn't fly... BUT



In More Power per Pound  
In Streamline Styling  
In Airplane Ride...

## MERCURY'S THE CAR OF AVIATION IDEAS!

IT DOESN'T FLY... *not quite!* But its smooth, nimble, thrifty 8-cylinder engine now turns up more power per pound than ever before. Mercury is faster at the light. Mercury is a miser for economy!

Its famous gliding airplane ride is now still softer, smoother, steadier—on longer, softer springs, and lower, wider chassis. The car of its massive sweep of modern line stems from aviation ideas of what streamline styling should be. Underneath Mercury's glamour and "go" is a car that's sound to the last bolt and nut—a staunch and well-built car to give you service you can count on through the years ahead.

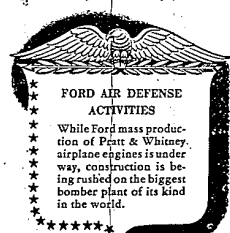
Before you put your money into any car this year—see for yourself what Mercury has done to put aviation ideas to work on the road.

MERCURY 8 with  
**BRILLIANT NEW LIQUAMATIC DRIVE\***  
(\*Optional at extra cost)

Now... Liquamatic Drive brings almost effortless driving ease to the new Mercury. You drive all day without shifting gears, even

on hills. You get smoother getaway. Surer traction on icy roads. Try this new kind of driving today—and Liquamatic Drive is what you'll want from now on!

Buy now on convenient payment plans. 1/3 down and 18 months to pay the balance. No cash required if your present car equals the down payment.



### FORD AIR DEFENSE ACTIVITIES

While Ford mass production of Peet & Whitey airplane engines is under way, construction is being rushed on the biggest bomber plant of its kind in the world.

## CURT HALL

Farmington

Mich.

## REDFORD THEATRE

Gd. River & Lahser  
FRI, SAT, SUN, MON.



—Also—



Take advantage of the Redford Theatre-Eastern Michigan Motorbus combination tickets. Combined Theater and round trip bus tickets. Adults 40 cents, children 20 cents. Buses leave Farmington every hour. Shows start at 7 p. m. throughout the week. On Saturdays, Sundays, holidays, continuous shows start at 1:30 p. m.