

RADIO SPEAKERS TO CONDUCT BAPTIST MEETS

A series of special services will be held at the Farmington Baptist Church from Monday, November 24 through Friday, November 28 with guest speakers occupying the pulpit, the Rev. Gilbert Miles has announced.

On Monday and Friday evenings the Rev. Thomas Malone of Pontiac, a radio preacher, will speak. On Tuesday, Wednesday and Thursday the address will be given by Dr. M. R. DeHaan, well known as the conductor of the Detroit Bible Class over the air each Sunday morning.

Buy Farmington Products



THANKSGIVING

The one day when all the family should gather to enjoy a day of feasting. Bring them to Tater's.

Cata's Buffet

CANVASS BEGUN BY EVANGELICAL CHURCH TEAMS

Canvassing for the Kingdom Roll Call of the Evangelical Church was begun this week. Five teams will call upon members of the congregation to collect money for the Synod, mission, and general fund of the church.

Serving as volunteer canvassers are Mrs. F. Lenz and Mrs. Louise Monzell, L. G. Fendt and L. F. Gildemeister, E. Wade and H. Esch, A. E. Nacker and C. U. Applegate, W. J. Maas and G. Nacker.

Baptist Young People To Take in Convention

Several from here will attend the Michigan Baptist Young People's Convention at the Sorbonne Avenue Baptist Church in Grand Rapids from November 21 to 23. The theme of the convention will be "Adventure with Christ."

Those who plan to go are Vernon and Jim Carvey, Paul Miller, Betty Jean Moore, June Humphrey, and Margaret Miles.

Buy in Farmington !!

Items of Interest to WOMEN

Calendar of Events

FRIDAY, NOVEMBER 21
Red Cross Sewing Unit opens at 1:30 p.m. in High School cafeteria. Women's Society of Christian Service of Methodist Church, at 2:00 p.m. in church hall. Election of officers.

MONDAY, NOVEMBER 24
Legion Auxiliary, at 8:00 p.m. in Legion Home.

TUESDAY, NOVEMBER 25
W.C.T.U., at 2:00 p.m. at home of Mrs. Gilbert Miles.

WEDNESDAY, NOVEMBER 26
Woman's Club, in Evangelical Church. Business meeting at 2:00 p.m., "Hour of Music" at 2:30.

THURSDAY, NOVEMBER 27
Red Cross Sewing Unit, opens at 1:30 p.m. in High School cafeteria. Baptist Women's Union, at 11:00 a.m. in church hall.

FRIDAY, NOVEMBER 28
Red Cross Sewing Unit, opens at 1:30 p.m. in High School cafeteria.

EXTENSION GROUP NOW MAKING CHAMOIS GLOVES

The Farmington Home Furnishings Group held a meeting Friday, November 14, at the home of Mrs. Arthur Lamb of Farmington. Twelve members and one visitor were present to make chamois skin gloves for personal use, as well as for Christmas gifts. Another meeting is to be held Friday, November 21, at the home of Mrs. Howard B. Middlewood, to enable those women who have not finished a pair of gloves to do so under the supervision of the project leaders, Mrs. Clarence Eigney and Mrs. Roderick Mahoney.

This group is one of many that is sponsored by the Michigan State College and extension work program, and is under the direct supervision of Miss Emma Dubord, Wayne County Home Demonstration agent.

HOBBIES TALK HEARD AT COUNTY P.T.A. MEETING

Mrs. A. T. Beale, Mrs. H. A. McIntyre, and Mrs. Richard Erickson represented the Farmington Parent-Teacher Association at the annual meeting of the Oakland County Council of Parent-Teacher Associations held Friday at Auburn Heights.

The delegations were welcomed by Clifford Smart, M.A., William Olson and Mrs. Glenn Cramer gave reports on the Michigan Education Association meeting. E. J. Lederle, Oakland County School Commissioner, spoke on educational problems. The guest speaker was Mrs. Rex Baker, who discussed "Keeping the Whole Family Happy with Hobbies."

A cooperative luncheon was served at noon.

War is Bay, Even In Buying a Coat

A woman who buys a new coat this year gets a reminder of acute national and international situations even when she starts "Just looking."

Wool prices are on the rise. Silk used for linings is a problem. Fur is on the taxable luxury list even when used for coat trim. Most coats consequently reflect simplicity in style and material, competent members of the home economics extension staff at Michigan State College.

This year's coat, too, may have to last a little longer than usual. So it pays to check every detail of coat quality before a purchase to make sure the best material is in the best made coat the buyer can afford.

Fiber content is important. This year the new Wool Products Labeling Act helps. Every coat, with more than 5 per cent wool, must be honestly labeled as to its set wool content and the kind of wool in the coat. A coat labeled "all wool" or "all virgin wool" will actually be 100 per cent wool.

The lining, with the ban on raw silk imports, will doubtless be of rayon. For most coats, good quality rayon is highly satisfactory. But make sure the seams are generous and well-stitched. Otherwise they may fray badly. Interlining material should be warm enough for frigid days. If the interlining and lining are seamed separately the coat will look better and fit better.

WOMAN'S CLUB TO HEAR RECITAL BY DON MILLER

Last Wednesday afternoon the Woman's Club of Farmington entertained the Northville Woman's Club, the Redford Woman's Club, the Redford Child Study Club, and the Farmington Garden Club at the Baptist Church hall. The speaker for the afternoon was Dr. Marie Rasey, associate professor of psychology at Wayne University.

Mrs. Roy Brown headed the refreshment committee, and tea was poured by Mrs. F. L. Cook and Mrs. T. H. McGee.

On November the twenty-sixth, members of the Woman's Club will entertain their friends with an afternoon of music by Don Miller, well known Detroit organist, at the Evangelical Church. The business meeting of the club will begin at 2:00, and the organ program at 2:30.

Bridge Expert to Speak On Town Hall Series

Elbi Culbertson, bridge expert, philosopher, author of "The Strange Lives of One Man," will speak to the Detroit Town Hall audience in the Fisher Theatre, Wednesday, Nov. 19, at 11 a.m. His subject will be "The Mysteries of the Mass Mind."

Had he never evolved the Culbertson system nor written a nationally syndicated column, Culbertson would still emerge as one of the intriguing figures of our time. Half-Russian, the son of an American mining engineer who married the daughter of a Cossack General, he was brought up a half wild "Americancenter" in the Caucasus where his father was making a fortune out of oil.

In his autobiography which Burton Rascoe hailed as "The most astoundingly frank and honest confession ever published, with the exception of Boswell's 'Journal,'" Culbertson revealed a life more surprising than any of the fantastic rumors that have attended him—a life lived to the full on two continents, as student, gambler, revolutionist, super-sophisticate, idealist, master of languages, cynic, God-seeker and Don Juan.

In his talk, the man who pyramided a stack of cards into a fortune will explore the psychology of the crowd, and will show how he became "Pastorboard Emperor" through a scientific study of the mass mind.

Single admissions, \$1.65 and \$1.10 including tax are available at Grinnell's, R.A. 1124.

Sally Nelson Heads Young People's League

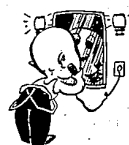
Sally Nelson will serve as president of the Young People's League of the Methodist Church for the coming year following her election to that office Sunday evening.

Secretary-Treasurer will be Myron Coon and Bob Hinger is the new program chairman.

The League will meet next Sunday at 7:30 p.m. at the Methodist parsonage. Bob Hinger will speak and lead a discussion on the subject of "Capital Punishment."

Buy Farmington Products

• Never miss a whisker!



USE A 60-WATT BULB on each side of the mirror

Don't let poor lighting ruin your complexion in the morning. Shave in comfort with a 60-watt lamp (shaded) on each side of the bathroom mirror. You'll be surprised at the difference it makes. The Detroit Edison Company.

Rev. Busching to Attend Nashville Conference

The Rev. Howard C. Busching of the Farmington Methodist Church expects to leave Sunday afternoon for Nashville, Tennessee where he will attend the National Conference of Christian Education being held there November 25 to 28.

Accompanying him will be the Rev. Luther Butt of the Monroe Methodist Church and the Rev. E. E. Niemang of the Wayne Methodist Church. Bruce Busching, son of Rev. and Mrs. Busching, will go with them as far as Versailles, Indiana where he will visit his grandparents. Mr. and Mrs. Otto C. Busching until his father's return.

METHODIST WOMEN TO ORGANIZE NOVEMBER 21

Constitution and by-laws of the Farmington organization of the Woman's Society of Christian Service will be adopted when all women of the Methodist Church are invited to a meeting of the organization on Friday, November 21, at 2 p.m. at the church.

The Woman's Society of Christian Service is a new society being organized in all Methodist churches. It will be explained by the Rev. and Mrs. Howard Busching. The committee on organization and nomination will bring in reports.

Officers for the ensuing year also will be elected at that time. Mrs. Eleanor Talbot will preside. A tea will follow the business session.

READ THE WANT ADS

Michigan Farmers Urged To Use Own Timber

Lumber prices are encouraging Michigan farmers to sell timber from their woodlands. Before selling, farmers ought to consider the needs for lumber on their own farms, advises Roy E. Skog, assistant extension forester at Michigan State College.

One warning he issues guards against clear-cutting or selling of the cream of the tree crop, as this leaves no future harvest for cash, firewood or for lumber for construction or repair of buildings.

"It's a serious mistake to cut sound, straight trees as they reach a diameter of 10 or 12 inches. Hardwoods such as oak, ash, maple, elm and beech grow fastest until around 20 to 24 inches in diameter. Trees over that diameter slow down in growth and the sound wood may even decrease in volume as a result of rapid decay."

Firewood preparation is a good winter job. The wood splits better when frozen, gets a full summer for air drying. Skog reports air dried hardwood is approximately twice the heat value as green hardwood.

If the timber isn't needed on the home farm for the housing of poultry or livestock, then there are certain precautions to take in selling to log buyers. Beech and elm have lower value, but Skog warns that if the maple, oak, ash, hickory or basswood is cut out a good hardwood stand may lapse into a less valuable woodland.

An adequate log rule should be used, according to another of Skog's bits of advice. The International rule is suggested, over the more prevalent Doyle or Scribner rules, to give a farmer a more accurate return for timbers. Sawmill addresses or information on timber estimating and log scaling can be obtained from the Forestry Department, Michigan State College, East Lansing.

IT PAYS 5 WAYS To Get Your GLASSES

1. Prices That Invite Comparison.
2. America's Finest Optical Products.
3. Completely Modern Scientific Laboratory.
4. Registered Optometrist Always in Attendance.
5. Addresses or Information on Convenient Terms For You.

Constant improvement of equipment and constant improvement of our easy payment plan have made us your leading optometrist. For a correct eye-test see us today.

BUY ON EASY TERMS!

at

Never an Interest or Carrying Charge

HONEYWAY, O. D. OPTOMETRIST IN CHARGE

DE ROY

JEWELLERS - OPTICIANS

2144 GRAND AVENUE, DETROIT

Do You Know?

HOW BIG AMERICA'S BIGGEST INDUSTRIAL BOMBER PLANT WILL BE?

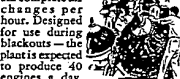
On 975 acres at Willow Run, construction on the Ford Bomber Plant has been progressing at a breath-taking pace since March of this year. Total floor area, including hangars, is to be 3,700,000 sq. ft. The plant will be 1,280 feet wide—3,200 feet long—requiring 25,000 tons of structural steel in building framework. End to end, the runways would make a roadway 44 miles long. A giant plant to build a giant plane.

HOW MANY BIG TANKS WILL FORD BUILD EACH MONTH?

Present plans call for a monthly output almost double that of America's entire tank production last year. \$39,000,000 in added plant facilities would be required to handle this next big defense assignment given the Ford Motor Company. Already at its own expense, Ford has undertaken the enlargement of its steel-casting facilities in order to make more quickly the tremendous demands of such production.

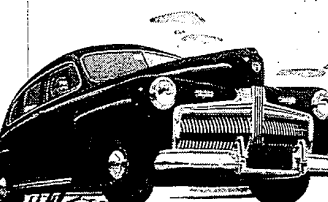
HOW BIG IS THE WORLD'S LARGEST PLANT FOR THE EXCLUSIVE PRODUCTION OF PLANE ENGINES?

Built in record time to meet America's urgent need for big Pratt & Whitney engines... the Ford Airplane Engine Plant has a total floor area of 31.3 acres. To support it, 65 miles of steel foundation steel four feet thick. Inside, 6,000 tons of refrigerating equipment draws 2,800,000 cubic feet of air a minute into the building to give six complete air changes per hour. Designed for use during blackouts, the plant is expected to produce 40 engines a day.



WHAT LEADING LOW PRICE CAR HAS THE BIG IMPROVEMENTS FOR '42?

IN A YEAR when relatively few real improvements have been made in general... take a good look at all that Ford has done. For a car that's really new... choose Ford for '42!



New Front End Design—wide, massive, setting a new modern note in big car styling.

New Doors that flare out to conceal running boards!

New Instrument Panel in colorful plastic.

New Two-Tone Interiors with rich upholstery used in contrast to genuine and art leathers.

New Longer, Softer Springs for an even smoother, finer ride.

New Dual Stabilizers—one to help prevent sideways, the other to improve steering.

New Lower, Wider Chassis—car hugs road as never before.

New Engine Choice—America's most modern 6- or 8-cylinder V-8. Both with improved acceleration!

Power with Economy 6 or 8 Cylinders

Buy now on convenient payment plan: \$4 down and 18 monthly payments of \$10. No cash required. Your present car equals the down payment.

CURT HALL

Farmington

Mich.

REDFORD THEATRE

FRI, SAT, SUN, MON.

SHE'S PAINTING THE TOWN RED WITH LIPSTICK!

Paymout presents

DOE AMECHE - MARTIN

in **KISS THE BOYS GOODBYE**

(but they always come back for more)

with OSCAR LEVANT, CONNIE BOWELL, RAYMOND WALKER, VIRGINIA DALE, BARBARA ALLEN, ELIZABETH PATTERSON, JEROME COWAN and ROCHESTER

Directed by VICTOR SCHODENBAUM

—Also—

SHE'S BETTER THAN EVER in her first picture Since winning the Academy Award

GINGER ROGERS

TOM, DICK and HARRY

with GEORGE MURPHY • ALAN MARSHAL • BURGESS MEREDITH

Directed by BARBARAN KAHN

Story and Screen Play by Paul Verrier

Take advantage of the Redford Theatre-Eastern Michigan Motorbus combination tickets. Combined Theater and round trip bus tickets. Adults 40 cents, children 20 cents. Buses leave Farmington every hour. Shows start at 7 p.m. throughout the week. On Saturdays, Sundays, holidays, continuous shows start at 1:30 p.m.