

Oyster Farming
Oyster farming, highly developed in many states, provides about 50 per cent of the total United States annual yield.

Ice Landings
No airplane, not even the lightest, should attempt to land on less than six inches of ice, even if it is old lake ice, the strongest kind of all.

Mobilgas
Mobileoil — Mobilgas
ROAD MASTER GARAGE
Complete Auto Repair
Complete Lubrication Service
Complete Line of Batteries
CY'S and MARTY'S
South Farmington & Grand River Cut-Off Phone Farm. 1980

Michigan Mirror

(Continued from Page Two)
of its real wealth. When our real wealth is gone — these natural resources which we have expended so recklessly — we shall become a third or fourth rate nation, with no means of making money.

We have buried at Fort Knox or how many bales of currency are turned out by the government printing presses. We shall be through, and the mass of our people will be living at the level of the Chinese.

"That is why the statement of Bernard Baruch, made recently when he said we had 'best make an inventory of what real wealth remained before we continued distributing it wholesale around the world, because the most important statement made by an American in our time."

"We have been destroying our real wealth as rapidly as possible — processing and shipping out of the country our reserve of oil, of timber, of minerals and many of these are exhausted or on the rapid way to exhaustion."

"We have destroyed most rapidly of all our two most important sources of our real wealth. These are our forests and our agricultural land. These are the most important because they are restorable or eternally renewable. When one of these are gone they are gone."

"We have already utterly destroyed beyond reclamation, save by possibly reforestation, one fourth of our agricultural land, and most of the rest is on the way out through erosion or the soil depletion which accompanies a poor agriculture."

"We have less than a sixth of our forests left, and much of this is in government parks and reserves. During the war, we cut down our forests five times as rapidly as we are replacing them."

"As our minerals, oils and other natural resources become exhausted we are forced to look more and more to agricultural land and forests for the substitutes to replace them."

"The claim by the British who came here to negotiate a loan that England deserved help because the loss of the per capita was greater in that country than in the United States is simply not true. The British paid only in money which, in one way or another is renewable, under a bank processing economy."

"We paid for the war in the very life blood of our economy, in oil, in minerals, and other metals, in forests and worn-out agricultural land, in the real wealth which is the foundation of our economy and our past and future economy."

"It is the sense of the drain upon the real wealth of the nation — Lend-Lease was the biggest, most generous and disastrous contribution ever made by any nation to war in the history of the world. We shall be paying for it generations hence. Debts of money can be paid off, easily enough under inflation, but nothing can restore to this nation the real wealth which gives value to that money — the ore dug out of our mines, the oil from our diminishing reserves, the forests, the labor of the men who processed it all. All of this was distributed lavishly over the world."

"American agriculture is sick and the sickness pervades the whole of our economy. Its condition is growing worse, not better. It is an agriculture of declining production per acre and increasing production costs per acre. Our record production during the war years was the most expensive production of food and farm commodities in the history of the world, because most of it was squeezed from already worn-out or non-agricultural land at low production per acre. Even at high prices the production of many commodities had to be subsidized by taxpayers money — a form of

economic deceit and self-deception. When the line of diminishing production per acre crosses that of increasing production costs we shall have a 'keep' agriculture with subsidies plus high prices plus shortages which in the end can only arrive at the living standards and diets of the Chinese."

Bromfield's solution is simple. Instead of subsidizing inefficient farming, he would increase production per acre by preserving what good agricultural land remains and by restoring the fertility of worn-out and second-rate agricultural land.

"A man who raises 160 bushels of corn on one acre is five times as well off as the man who raises 100 bushels of corn on five acres," he said. "This is true especially in terms of labor, seed, fertilizer, taxes and interest."

"Thus the problem of agriculture becomes the problem of all American economy. By renewing the wealth of our forests and our land, we can maintain a sound basis for industrial prosperity. Otherwise, we face inevitably a day of reckoning, just as that in Britain, when a nation bankrupt of natural resources must turn to state socialism and other isms as a palliative for its ills."

M.S.C. Alumni Awards District Chairman Named

Michigan State College alumni are again offering 64 \$135 scholarships — a minimum of one award to each senatorial district in the state — to graduates of accredited high schools, according to Glen O. Stewart, director of alumni relations.

The stipend represents a waiver of tuition by the college, and candidates must have been in the upper one-third of their high school class. Only entering freshmen will be considered, and the scholarships are not available to students who have taken college or university work. All applications must be filed with the district chairman not later than April 15.

A maximum of six candidates may be chosen by each senatorial district committee, and the candidates will take a comprehensive examination in May. Final awards will be granted by the M.S.C. committee of scholarships. A scholarship may be renewed for the full period of undergraduate training at the college provided the recipient maintains a high scholastic standing.

Mr. Stewart announced that the chairman on alumni undergraduate scholarships for this district is Martin F. Rummel, 152 Illinois Ave., Pontiac, Mich.

Bang's Disease!
Bang's disease infection in pastures may not survive direct sunshine, but in dark, poorly ventilated and unclean stables it may live for months.

Measles

By Courtesy Of
SMITH-BRADLEY DRUG CO.

Not necessarily serious in itself, measles is dangerous because of the complications it may bring.

Treatment today is much more scientific and comfortable than formerly. Now it is better understood how to lessen the danger to eyes, ears and lungs that measles often bring.

Measles is a contagious malady, and common consideration for others calls for supervision of the patient by a physician and strict observance of quarantine rules.

Of great importance in treatment is the quality of medication and disinfectants used in the sickroom. Take all prescriptions to a reliable drug-gist.

This is the Forty-First of a series of editorial advertisements appearing in this paper each week.

Copyright

FARMINGTON AGENT:

Irene's Apparel Shoppe
PHONE 0313

FOR
FREE PICK-UP AND DELIVERY

Special Equipment For ...

HAT BLOCKING MOTHPROOFING
GLOVE STITCHING RE-WEAVING
KNITWEAR LEATHER FINISHING
RUGS FUR CLEANING

Greene's Cleaners
— Michigan's Leading Drycleaners —

New Reenlistment Plan Announced Here

The local Recruiting Officer, Col. Royal L. McCornick, has stated that a new War Department directive has been released whereby men recently discharged from the Army can reenlist under the following provisions:

1. In grade, within ninety (90) days from date of discharge.
2. Reenlistment allowance "within ninety (90) days from date of discharge," of fifty (\$50.00) for each year of service from, if any, last payment of reenlistment allowance.

3. Furlough, within twenty (20) days from date of discharge under the following provisions:
Length of continuous active enlisted service, 6 months; under 18 months. Period of reenlistment furlough 30 days.

Length of continuous active enlisted service 18 months; under 10 months. Period of reenlistment furlough 60 days.
Length of continuous active en-

listed service 30 months and over. Period of reenlistment furlough 90 days.

Any man in the ERC out of service more than ninety (90) days at the time of enlistment is not entitled to the enlistment bonus, or the enlistment furlough. Any enlisted man in the ERC enlisted in the U.S. Army within twenty (20) days interim between date of discharge and enlistment in the Regular Army is entitled to the furlough and enlistment hour. For information see your local recruiting officer, Municipal Building, Farmington.

Shrimps Popular in U. S.
Shrimps are the most popular crustacean in the United States, it is reported. Americans eat 10 times as much shrimp as lobster and half again as much as they do crab.

Worn Machine Parts Remade
Worn machine parts, such as shafts, bearings, hinge pins and pistons, can be built up to their original dimensions at one-third to one-half the cost of new parts, and in some cases with wearing qualities superior to the original. Hard metals are sprayed on the units.

AUTO REPAIR
and
ROAD SERVICE
TIRE RECAPPING
OIL - GAS - LUBRICATION
EARL MURRILL
Hi-Speed Service
3128 Grand River
Phone Farm. 0638

Try Our Daily Specials

A WIDE VARIETY TO CHOOSE FROM

Full Course Dinners or Short Orders

The Buffet Chop House

23621 Farmington Road

HEARING DEMONSTRATION

FREE—NO OBLIGATION

NEW **TENTH** RADIONIC HEARING AID

\$40 COMPLETE
Model A-3-A
With Negrol-Color Earphone and Cord

DR. M. M. HONEYMAN

OPTOMETRIST

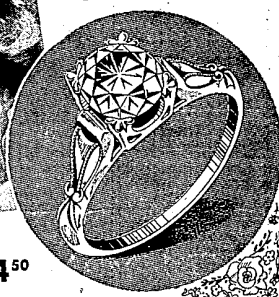
22003 Grand River, Upstairs
Corner of Lahser

PHONE REDFORD 5090

Hard to Resist EASY TO BUY! Diamonds



Dazzling brilliance, breath-taking beauty and smart styling make our diamond rings utterly irresistible ... yet so reasonably priced are they, that you can buy them without the slightest strain on your budget.



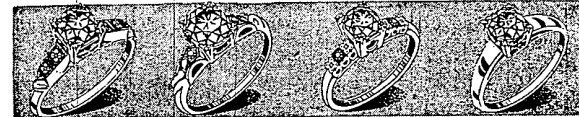
Beautifully sculptured diamond solitaire Engagement Ring. **\$44.50**



6-diamond Bridal Duo in elaborately carved mountings. Both ... **\$99.50**

Stunning diamond solitaire with perfectly matched wedding band. **\$79.50**

4-diamond Bridal Ensemble. A gorgeous creation. Both ... **\$67.50**



Diamond solitaire in beautifully engraved mounting. **\$57.50**

Modern motif in a 3-diamond Engagement Ring. **\$87.50**

Stunning 3-diamond Engagement Ring; smartly styled. **\$72.50**

Diamond solitaire Engagement Ring of classic simplicity. **\$37.50**

"The Store That Confidence Built"

Established Since 1924

PADOVER
Credit JEWELERS OPTICIANS

15334 GRAND RIVER at GREENFIELD

FREE PARKING AT REAR

OPEN 'TIL 9:00 P.M. THURS. - FRI. - SAT. EVENINGS

DIX RADIO SERVICE

23629 FARMINGTON ROAD
Across From Farmington State Bank

REPAIRS FOR RADIOS, TYPEWRITERS, CAMERAS,
PROJECTORS, WASHING MACHINES AND
OTHER APPLIANCES

Pick Up and Delivery
Proprietors

DICK SILLS and JACK HALLAMAN

Telephone Farmington 1764

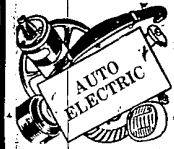
Just Arrived!

ALUMINUM
Pots and Pans
ELECTRIC and HAND
Juicers

A Real Kitchen Aid

Jahn's LIVONIA HARDWARE
and LUMBER COMPANY

5 Mile and Farmington Roads
Livonia 3140



Repair Service

Keep your car rolling along in good condition by keeping your electrical ignition system in top shape. Let us check your car today!

CARBURETOR - BATTERY
SPEEDOMETER SERVICE

We Repair ...

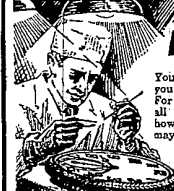
South Wind GAS HEATERS

MEMBERS
UNITED MOTORS SERVICE
DEALERS

Fairley Auto Electric

Farmington Phone 2349
GRAND RIVER Near MIDDLEBELT

Guaranteed WATCH REPAIRING



PROMPT SERVICE

You're sure of complete satisfaction when you have your watch repaired at De Roy's. For our watch doctors are specialists on all makes or models. So regardless of how big or small your watch repair job may be, you can be certain that when it's repaired at De Roy's, it will run right!

De Roy
Jewelry Company
21648 GRAND RIVER AVE., REDFORD
22805 Michigan
In W. Dearborn

Open Thursday
Friday and
Saturday
11:30 - 5:30
15441 E. Warren
Corner of Audubon